



## Stone Energy Corporation

Mary Prospect  
Erlewine Pad  
Erlewine 10H - Slot 10H

OH

Design: 10H As Drilled

## Standard Survey Report

26 February, 2015



[www.scientificdrilling.com](http://www.scientificdrilling.com)

06/02/2017



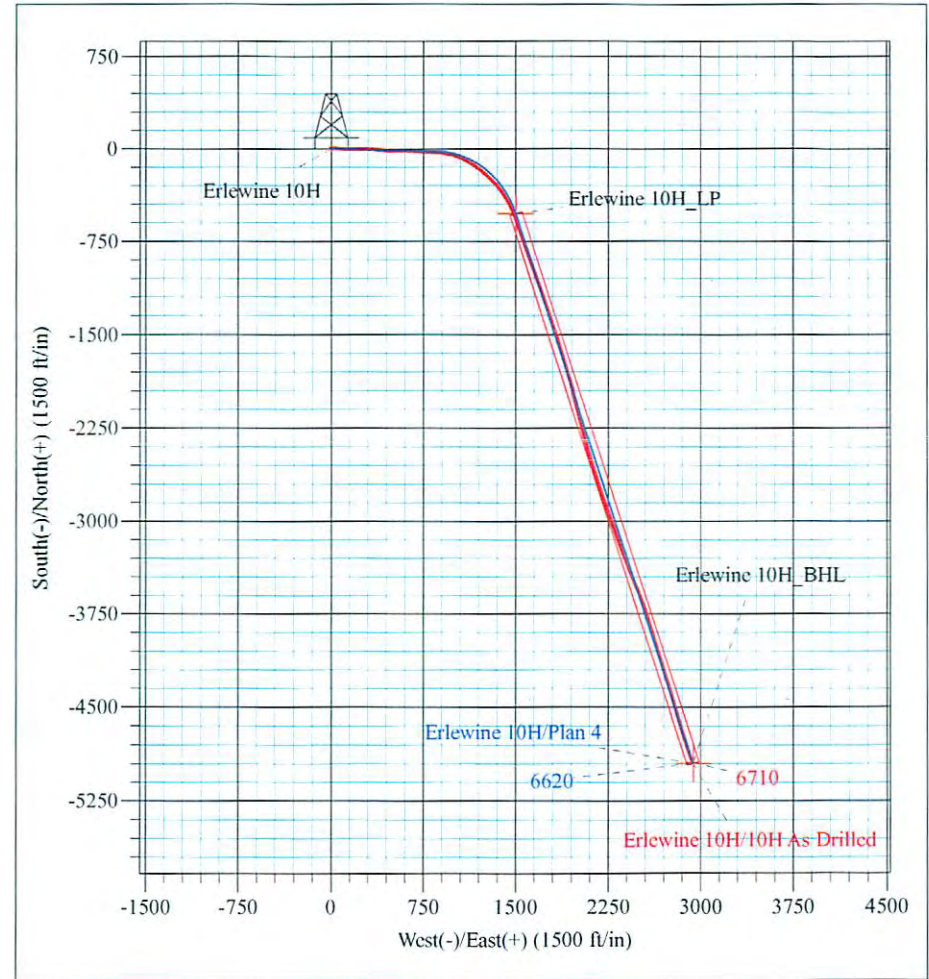
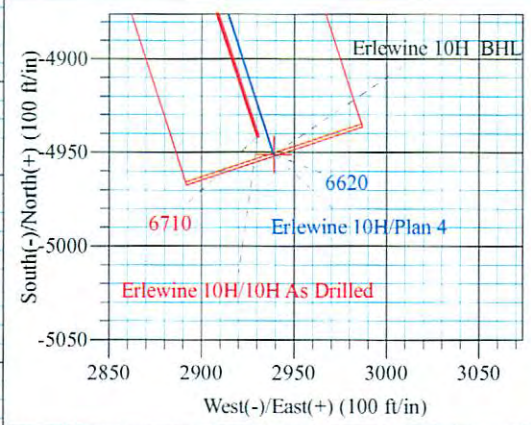
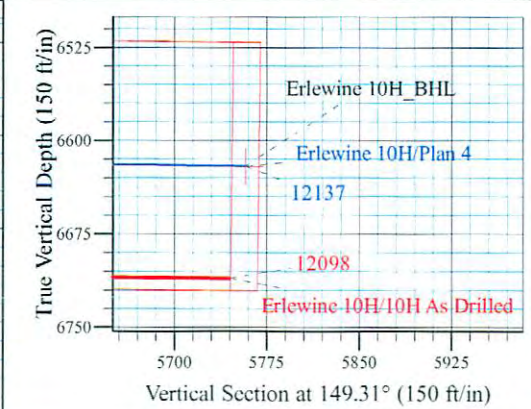
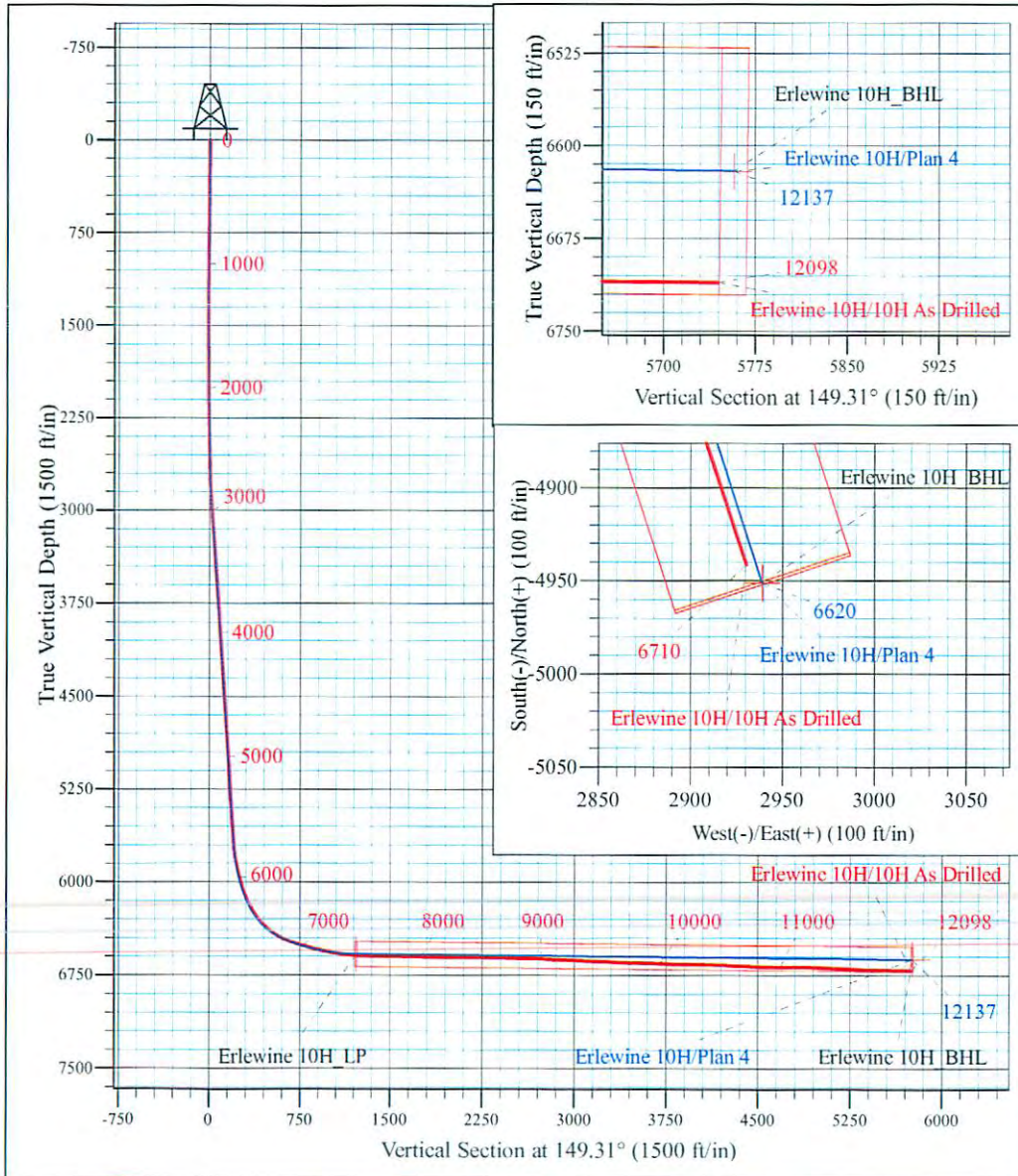
Erlewine Pad  
 Erlewine 10H  
 Plan 4  
 GL 1212' & KB 18' @ 1230.00ft (Saxon 141)  
 Mary Prospect

PROJECT DETAILS:  
 Geodetic System: US State Plane 1927 (Exact solution)  
 Datum: NAD 1927 (NADCON CONUS)  
 Ellipsoid: Clarke 1866  
 Zone: West Virginia North 4701  
 System Datum: Mean Sea Level



WELL DETAILS: Erlewine 10H

+N/-S	+E/-W	Northing	Easting	Latitude	Longitude
0.00	0.00	433666.00	1634896.00	39° 41' 0.328 N	80° 47' 50.284 W



Azimuths to Grid North  
 True North: 0.83°  
 Magnetic North: -6.80°  
 Magnetic Field  
 Strength: 52523.0snT  
 Dip Angle: 67.14°  
 Date: 11/17/2014  
 Model: USER DEFINED

Shane Rhodes  
 10:11, February 26 2015  
 Scientific Drilling International  
 124 Vista Drive  
 Charleroi, PA 15022



<b>Company:</b>	Stone Energy Corporation	<b>Local Co-ordinate Reference:</b>	Well Erlewine 10H - Slot 10H
<b>Project:</b>	Mary Prospect	<b>TVD Reference:</b>	GL 1212' & KB 18' @ 1230.00ft (Saxon 141)
<b>Site:</b>	Erlewine Pad	<b>MD Reference:</b>	GL 1212' & KB 18' @ 1230.00ft (Saxon 141)
<b>Well:</b>	Erlewine 10H	<b>North Reference:</b>	Grid
<b>Wellbore:</b>	OH	<b>Survey Calculation Method:</b>	Minimum Curvature
<b>Design:</b>	10H As Drilled	<b>Database:</b>	Northeast District

<b>Project</b>	Mary Prospect, Wetzel County, West Virginia		
<b>Map System:</b>	US State Plane 1927 (Exact solution)	<b>System Datum:</b>	Mean Sea Level
<b>Geo Datum:</b>	NAD 1927 (NADCON CONUS)		
<b>Map Zone:</b>	West Virginia North 4701		

<b>Site</b>	Erlewine Pad				
<b>Site Position:</b>		<b>Northing:</b>	433,674.00 usft	<b>Latitude:</b>	39° 41' 0.404 N
<b>From:</b>	Map	<b>Easting:</b>	1,634,878.00 usft	<b>Longitude:</b>	80° 47' 50.515 W
<b>Position Uncertainty:</b>	0.00 ft	<b>Slot Radius:</b>	13-3/16 "	<b>Grid Convergence:</b>	-0.83 °

<b>Well</b>	Erlewine 10H - Slot 10H					
<b>Well Position</b>	<b>+N/-S</b>	0.00 ft	<b>Northing:</b>	433,666.00 usft	<b>Latitude:</b>	39° 41' 0.328 N
	<b>+E/-W</b>	0.00 ft	<b>Easting:</b>	1,634,896.00 usft	<b>Longitude:</b>	80° 47' 50.284 W
<b>Position Uncertainty</b>		0.00 ft	<b>Wellhead Elevation:</b>	0.00 ft	<b>Ground Level:</b>	1,212.00 ft

<b>Wellbore</b>	OH				
<b>Magnetics</b>	<b>Model Name</b>	<b>Sample Date</b>	<b>Declination (°)</b>	<b>Dip Angle (°)</b>	<b>Field Strength (nT)</b>
	HDGM	6/17/2014	-7.62	67.17	52,581
	User Defined	7/28/2014	-7.61	67.16	52,565
	User Defined	11/17/2014	-7.63	67.14	52,523

<b>Design</b>	10H As Drilled				
<b>Audit Notes:</b>					
<b>Version:</b>	1.0	<b>Phase:</b>	ACTUAL	<b>Tie On Depth:</b>	0.00
<b>Vertical Section:</b>	<b>Depth From (TVD) (ft)</b>	<b>+N/-S (ft)</b>	<b>+E/-W (ft)</b>	<b>Direction (°)</b>	
	0.00	0.00	0.00		149.31

<b>Survey Program</b>	<b>Date</b>	2/26/2015			
<b>From (ft)</b>	<b>To (ft)</b>	<b>Survey (Wellbore)</b>	<b>Tool Name</b>	<b>Description</b>	
18.00	2,385.00	Survey #1 - SDI Gyro (OH)	SDI Standard Keeper 103	SDI Standard Wireline Keeper ver 1.0.3	
2,496.00	12,098.00	Survey #2 - SDI MWD (OH)	SDI MWD	SDI MWD - Standard ver 1.0.1	

<b>Survey</b>										
<b>Measured Depth (ft)</b>	<b>Inclination (°)</b>	<b>Azimuth (°)</b>	<b>Vertical Depth (ft)</b>	<b>+N/-S (ft)</b>	<b>+E/-W (ft)</b>	<b>Vertical Section (ft)</b>	<b>Dogleg Rate (°/100usft)</b>	<b>Build Rate (°/100usft)</b>	<b>Turn Rate (°/100usft)</b>	
0.00	0.00	0.00	0.00	0.00	0.00	0.00	0.00	0.00	0.00	
18.00	0.00	360.00	18.00	0.00	0.00	0.00	0.00	0.00	0.00	
108.00	0.54	338.30	108.00	0.39	-0.16	-0.42	0.60	0.60	0.00	
<b>First SDI Gyro Survey @ MD 108</b>										
208.00	0.46	332.46	207.99	1.19	-0.52	-1.29	0.09	-0.08	-5.84	
308.00	0.45	324.51	307.99	1.86	-0.93	-2.08	0.06	-0.01	-7.95	
408.00	0.52	308.24	407.99	2.46	-1.51	-2.89	0.15	0.07	-16.27	



Scientific Drilling International  
Survey Report



<b>Company:</b>	Stone Energy Corporation	<b>Local Co-ordinate Reference:</b>	Well Erlewine 10H - Slot 10H
<b>Project:</b>	Mary Prospect	<b>TVD Reference:</b>	GL 1212' & KB 18' @ 1230.00ft (Saxon 141)
<b>Site:</b>	Erlewine Pad	<b>MD Reference:</b>	GL 1212' & KB 18' @ 1230.00ft (Saxon 141)
<b>Well:</b>	Erlewine 10H	<b>North Reference:</b>	Grid
<b>Wellbore:</b>	OH	<b>Survey Calculation Method:</b>	Minimum Curvature
<b>Design:</b>	10H As Drilled	<b>Database:</b>	Northeast District

Measured Depth (ft)	Inclination (°)	Azimuth (°)	Vertical Depth (ft)	+N/-S (ft)	+E/-W (ft)	Vertical Section (ft)	Dogleg Rate (°/100usft)	Build Rate (°/100usft)	Turn Rate (°/100usft)
508.00	0.67	296.61	507.98	3.01	-2.39	-3.81	0.19	0.15	-11.63
608.00	0.70	292.56	607.98	3.50	-3.48	-4.79	0.06	0.03	-4.05
708.00	0.68	291.26	707.97	3.95	-4.60	-5.75	0.03	-0.02	-1.30
808.00	0.49	278.26	807.96	4.23	-5.57	-6.48	0.23	-0.19	-13.00
908.00	0.40	282.92	907.96	4.37	-6.34	-6.99	0.10	-0.09	4.66
1,008.00	0.39	293.66	1,007.96	4.58	-6.99	-7.51	0.07	-0.01	10.74
1,108.00	0.21	283.75	1,107.96	4.76	-7.48	-7.91	0.19	-0.18	-9.91
1,193.00	0.48	275.82	1,192.95	4.84	-7.98	-8.23	0.32	0.32	-9.33
1,208.00	0.25	295.79	1,207.95	4.86	-8.08	-8.30	1.73	-1.53	133.13
1,287.00	0.95	12.89	1,286.95	5.57	-8.09	-8.92	1.17	0.89	97.60
1,308.00	1.17	25.42	1,307.95	5.93	-7.95	-9.16	1.52	1.05	59.67
1,318.00	1.23	25.39	1,317.94	6.12	-7.86	-9.28	0.60	0.60	-0.30
1,381.00	1.46	52.93	1,380.93	7.22	-6.93	-9.75	1.08	0.37	43.71
1,408.00	1.52	57.29	1,407.92	7.62	-6.36	-9.80	0.47	0.22	16.15
1,475.00	1.70	84.56	1,474.89	8.19	-4.62	-9.40	1.16	0.27	40.70
1,508.00	1.53	91.23	1,507.88	8.23	-3.69	-8.96	0.77	-0.52	20.21
1,570.00	1.08	72.96	1,569.86	8.38	-2.31	-8.39	0.98	-0.73	-29.47
1,664.00	0.40	82.09	1,663.86	8.69	-1.14	-8.05	0.73	-0.72	9.71
1,758.00	0.44	68.18	1,757.85	8.87	-0.48	-7.87	0.12	0.04	-14.80
1,808.00	0.31	146.29	1,807.85	8.83	-0.22	-7.70	0.97	-0.26	156.22
1,852.00	0.56	166.94	1,851.85	8.52	-0.11	-7.38	0.66	0.57	46.93
1,908.00	0.44	171.50	1,907.85	8.04	-0.01	-6.92	0.23	-0.21	8.14
2,008.00	0.53	172.00	2,007.85	7.20	0.11	-6.14	0.09	0.09	0.50
2,108.00	0.52	168.32	2,107.84	6.30	0.26	-5.28	0.04	-0.01	-3.68
2,208.00	0.60	174.96	2,207.84	5.33	0.40	-4.38	0.10	0.08	6.64
2,308.00	0.61	157.62	2,307.83	4.32	0.65	-3.38	0.18	0.01	-17.34
2,385.00	0.86	158.65	2,384.82	3.40	1.02	-2.41	0.33	0.32	1.34
<b>Last SDI Gyro Survey @ MD 2385</b>									
2,496.00	0.63	128.31	2,495.82	2.25	1.80	-1.01	0.40	-0.21	-27.33
<b>First SDI MWD Survey @ MD 2488.00</b>									
2,590.00	3.54	80.16	2,589.75	2.42	5.06	0.50	3.36	3.10	-51.22
2,684.00	4.67	77.24	2,683.50	3.76	11.66	2.71	1.22	1.20	-3.11
2,778.00	5.70	83.06	2,777.12	5.17	20.02	5.77	1.23	1.10	6.19
2,872.00	6.45	91.18	2,870.59	5.63	29.93	10.44	1.21	0.80	8.64
2,966.00	7.51	100.13	2,963.90	4.44	41.26	17.24	1.61	1.13	9.52
3,060.00	7.55	98.63	3,057.09	2.43	53.41	25.17	0.21	0.04	-1.60
3,154.00	7.30	92.67	3,150.30	1.23	65.48	32.37	0.86	-0.27	-6.34
3,248.00	6.66	90.68	3,243.60	0.88	76.90	38.49	0.73	-0.68	-2.12
3,342.00	6.84	92.70	3,336.95	0.56	87.94	44.41	0.32	0.19	2.15
3,436.00	7.65	96.90	3,430.20	-0.46	99.75	51.31	1.03	0.86	4.47
3,531.00	7.53	92.21	3,524.37	-1.46	112.24	58.55	0.66	-0.13	-4.94
3,626.00	6.99	90.09	3,618.61	-1.71	124.24	64.89	0.63	-0.57	-2.23
3,720.00	6.61	86.95	3,711.95	-1.43	135.37	70.33	0.57	-0.40	-3.34
3,814.00	7.19	90.58	3,805.27	-1.20	146.65	75.89	0.77	0.62	3.86



Scientific Drilling International  
Survey Report



<b>Company:</b>	Stone Energy Corporation	<b>Local Co-ordinate Reference:</b>	Well Erlewine 10H - Slot 10H
<b>Project:</b>	Mary Prospect	<b>TVD Reference:</b>	GL 1212' & KB 18' @ 1230.00ft (Saxon 141)
<b>Site:</b>	Erlewine Pad	<b>MD Reference:</b>	GL 1212' & KB 18' @ 1230.00ft (Saxon 141)
<b>Well:</b>	Erlewine 10H	<b>North Reference:</b>	Grid
<b>Wellbore:</b>	OH	<b>Survey Calculation Method:</b>	Minimum Curvature
<b>Design:</b>	10H As Drilled	<b>Database:</b>	Northeast District

Survey										
Measured Depth (ft)	Inclination (°)	Azimuth (°)	Vertical Depth (ft)	+N/-S (ft)	+E/-W (ft)	Vertical Section (ft)	Dogleg Rate (°/100usft)	Build Rate (°/100usft)	Turn Rate (°/100usft)	
3,909.00	7.14	88.37	3,899.52	-1.09	158.50	81.85	0.29	-0.05	-2.33	
4,003.00	7.73	89.94	3,992.73	-0.92	170.66	87.90	0.66	0.63	1.67	
4,097.00	7.78	88.11	4,085.87	-0.70	183.34	94.19	0.27	0.05	-1.95	
4,191.00	7.67	92.51	4,179.02	-0.77	195.97	100.69	0.64	-0.12	4.68	
4,285.00	7.25	91.96	4,272.23	-1.25	208.16	107.33	0.45	-0.45	-0.59	
4,379.00	6.60	87.89	4,365.54	-1.25	219.49	113.11	0.87	-0.69	-4.33	
4,473.00	7.21	93.57	4,458.86	-1.42	230.77	119.02	0.97	0.65	6.04	
4,567.00	6.95	91.95	4,552.14	-1.98	242.34	125.41	0.35	-0.28	-1.72	
4,663.00	6.61	85.06	4,647.47	-1.70	253.65	130.94	0.92	-0.35	-7.18	
4,757.00	6.49	92.70	4,740.86	-1.49	264.35	136.22	0.94	-0.13	8.13	
4,851.00	7.18	96.98	4,834.19	-2.45	275.49	142.73	0.91	0.73	4.55	
4,945.00	6.86	98.00	4,927.49	-3.94	286.88	149.83	0.37	-0.34	1.09	
5,039.00	6.07	96.55	5,020.89	-5.29	297.38	156.35	0.86	-0.84	-1.54	
5,133.00	7.15	89.31	5,114.26	-5.79	308.16	162.28	1.45	1.15	-7.70	
5,227.00	6.83	85.19	5,207.57	-5.25	319.58	167.65	0.63	-0.34	-4.38	
5,322.00	6.82	90.48	5,301.89	-4.82	330.85	173.03	0.66	-0.01	5.57	
5,416.00	7.27	96.46	5,395.19	-5.54	342.34	179.51	0.91	0.48	6.36	
5,510.00	7.33	93.49	5,488.42	-6.57	354.24	186.48	0.41	0.06	-3.16	
5,604.00	6.79	93.24	5,581.71	-7.25	365.77	192.95	0.58	-0.57	-0.27	
5,667.00	6.84	91.19	5,644.27	-7.54	373.24	197.01	0.39	0.08	-3.25	
5,698.00	7.14	92.18	5,675.04	-7.65	377.01	199.03	1.04	0.97	3.19	
5,730.00	9.16	91.42	5,706.71	-7.79	381.55	201.46	6.32	6.31	-2.38	
5,762.00	11.28	92.54	5,738.20	-7.99	387.22	204.53	6.65	6.63	3.50	
5,794.00	13.62	92.67	5,769.45	-8.31	394.11	208.32	7.31	7.31	0.41	
5,826.00	15.98	93.25	5,800.36	-8.73	402.27	212.85	7.39	7.38	1.81	
5,858.00	18.13	94.26	5,830.97	-9.35	411.64	218.16	6.78	6.72	3.16	
5,890.00	19.63	95.45	5,861.25	-10.23	421.95	224.19	4.84	4.69	3.72	
5,922.00	21.24	94.72	5,891.24	-11.22	433.08	230.72	5.09	5.03	-2.28	
5,953.00	22.65	94.66	5,919.99	-12.17	444.63	237.43	4.55	4.55	-0.19	
5,985.00	24.66	93.25	5,949.30	-13.05	457.44	244.72	6.52	6.28	-4.41	
6,017.00	26.69	91.54	5,978.14	-13.62	471.29	252.28	6.75	6.34	-5.34	
6,049.00	28.69	91.25	6,006.47	-13.98	486.15	260.18	6.26	6.25	-0.91	
6,081.00	30.66	91.03	6,034.27	-14.29	501.99	268.53	6.17	6.16	-0.69	
6,113.00	32.26	91.31	6,061.57	-14.64	518.69	277.35	5.02	5.00	0.88	
6,143.00	34.82	92.13	6,086.57	-15.14	535.25	286.24	8.67	8.53	2.73	
6,173.00	36.98	93.09	6,110.87	-15.94	552.82	295.90	7.44	7.20	3.20	
6,204.00	39.49	93.23	6,135.22	-17.00	571.98	306.59	8.10	8.10	0.45	
6,234.00	41.76	93.67	6,157.99	-18.18	591.47	317.55	7.63	7.57	1.47	
6,264.00	44.64	93.46	6,179.86	-19.45	611.97	329.11	9.61	9.60	-0.70	
6,295.00	46.88	92.92	6,201.48	-20.69	634.14	341.49	7.33	7.23	-1.74	
6,325.00	48.32	92.25	6,221.71	-21.68	656.27	353.64	5.08	4.80	-2.23	
6,355.00	50.07	91.59	6,241.31	-22.44	678.97	365.88	6.07	5.83	-2.20	
6,386.00	52.66	90.63	6,260.67	-22.91	703.18	378.64	8.70	8.35	-3.10	

<b>Company:</b>	Stone Energy Corporation	<b>Local Co-ordinate Reference:</b>	Well Erlewine 10H - Slot 10H
<b>Project:</b>	Mary Prospect	<b>TVD Reference:</b>	GL 1212' & KB 18' @ 1230.00ft (Saxon 141)
<b>Site:</b>	Erlewine Pad	<b>MD Reference:</b>	GL 1212' & KB 18' @ 1230.00ft (Saxon 141)
<b>Well:</b>	Erlewine 10H	<b>North Reference:</b>	Grid
<b>Wellbore:</b>	OH	<b>Survey Calculation Method:</b>	Minimum Curvature
<b>Design:</b>	10H As Drilled	<b>Database:</b>	Northeast District

Measured Depth (ft)	Inclination (°)	Azimuth (°)	Vertical Depth (ft)	+N/-S (ft)	+E/-W (ft)	Vertical Section (ft)	Dogleg Rate (°/100usft)	Build Rate (°/100usft)	Turn Rate (°/100usft)
6,416.00	55.02	90.55	6,278.37	-23.16	727.39	391.22	7.87	7.87	-0.27
6,446.00	57.56	91.01	6,295.02	-23.50	752.35	404.25	8.56	8.47	1.53
6,476.00	58.58	92.03	6,310.88	-24.18	777.80	417.82	4.46	3.40	3.40
6,507.00	59.68	92.33	6,326.79	-25.19	804.38	432.26	3.64	3.55	0.97
6,537.00	61.29	92.81	6,341.57	-26.36	830.46	446.58	5.54	5.37	1.60
6,567.00	62.86	93.80	6,355.62	-27.89	856.93	461.40	5.99	5.23	3.30
6,597.00	62.89	95.83	6,369.30	-30.13	883.53	476.91	6.02	0.10	6.77
6,627.00	62.87	98.22	6,382.97	-33.40	910.03	493.25	7.09	-0.07	7.97
6,657.00	63.37	101.18	6,396.54	-37.91	936.40	510.58	8.96	1.67	9.87
6,688.00	63.90	104.21	6,410.31	-44.01	963.49	529.66	8.92	1.71	9.77
6,718.00	65.13	107.55	6,423.22	-51.42	989.53	549.33	10.85	4.10	11.13
6,748.00	66.53	110.21	6,435.50	-60.28	1,015.42	570.16	9.34	4.67	8.87
6,777.00	68.30	112.66	6,446.64	-70.07	1,040.34	591.30	9.90	6.10	8.45
6,808.00	68.73	115.70	6,458.00	-81.88	1,066.65	614.89	9.23	1.39	9.81
6,838.00	70.56	117.47	6,468.44	-94.47	1,091.80	638.55	8.23	6.10	5.90
6,868.00	72.21	119.92	6,478.01	-108.12	1,116.74	663.02	9.49	5.50	8.17
6,898.00	74.11	121.62	6,486.70	-122.81	1,141.41	688.24	8.34	6.33	5.67
6,929.00	74.57	124.47	6,495.07	-139.09	1,166.42	715.01	8.98	1.48	9.19
6,959.00	74.58	126.29	6,503.05	-155.83	1,190.00	741.44	5.85	0.03	6.07
6,989.00	75.17	127.93	6,510.88	-173.31	1,213.10	768.26	5.63	1.97	5.47
7,019.00	75.38	129.88	6,518.51	-191.53	1,235.67	795.45	6.33	0.70	6.50
7,050.00	75.49	131.61	6,526.30	-211.11	1,258.40	823.89	5.41	0.35	5.58
7,081.00	76.03	133.88	6,533.93	-231.50	1,280.47	852.69	7.31	1.74	7.32
7,111.00	76.44	134.42	6,541.07	-251.80	1,301.38	880.82	2.22	1.37	1.80
7,141.00	77.93	136.91	6,547.72	-272.72	1,321.82	909.24	9.50	4.97	8.30
7,173.00	78.90	138.48	6,554.15	-295.90	1,342.91	939.95	5.68	3.03	4.91
7,205.00	79.84	141.15	6,560.05	-319.93	1,363.20	970.96	8.71	2.94	8.34
7,237.00	79.87	143.93	6,565.69	-344.93	1,382.36	1,002.24	8.55	0.09	8.69
7,269.00	80.22	145.92	6,571.22	-370.72	1,400.47	1,033.66	6.22	1.09	6.22
7,301.00	81.04	148.47	6,576.43	-397.26	1,417.57	1,065.21	8.27	2.56	7.97
7,333.00	82.82	150.45	6,580.93	-424.55	1,433.67	1,096.89	8.27	5.56	6.19
7,364.00	84.02	153.31	6,584.48	-451.70	1,448.18	1,127.65	9.95	3.87	9.23
7,396.00	84.45	155.17	6,587.69	-480.38	1,462.02	1,159.37	5.94	1.34	5.81
7,427.00	85.93	156.85	6,590.29	-508.60	1,474.58	1,190.05	7.21	4.77	5.42
7,459.00	86.98	157.79	6,592.27	-538.07	1,486.89	1,221.68	4.40	3.28	2.94
7,490.00	87.48	158.53	6,593.77	-566.81	1,498.41	1,252.27	2.88	1.61	2.39
7,522.00	88.89	159.10	6,594.78	-596.63	1,509.97	1,283.81	4.75	4.41	1.78
7,585.00	89.33	159.98	6,595.76	-655.65	1,531.99	1,345.80	1.56	0.70	1.40
7,649.00	89.19	160.66	6,596.59	-715.90	1,553.54	1,408.62	1.08	-0.22	1.06
7,713.00	88.35	160.79	6,597.96	-776.30	1,574.66	1,471.34	1.33	-1.31	0.20
7,776.00	88.92	161.01	6,599.46	-835.82	1,595.27	1,533.03	0.97	0.90	0.35
7,840.00	89.66	160.93	6,600.26	-896.31	1,616.14	1,595.71	1.16	1.16	-0.13
7,903.00	89.43	160.23	6,600.76	-955.73	1,637.08	1,657.49	1.17	-0.37	-1.11
7,967.00	88.05	160.03	6,602.16	-1,015.90	1,658.83	1,720.33	2.18	-2.16	-0.31



**Scientific Drilling International**  
Survey Report



<b>Company:</b>	Stone Energy Corporation	<b>Local Co-ordinate Reference:</b>	Well Erlewine 10H - Slot 10H
<b>Project:</b>	Mary Prospect	<b>TVD Reference:</b>	GL 1212' & KB 18' @ 1230.00ft (Saxon 141)
<b>Site:</b>	Erlewine Pad	<b>MD Reference:</b>	GL 1212' & KB 18' @ 1230.00ft (Saxon 141)
<b>Well:</b>	Erlewine 10H	<b>North Reference:</b>	Grid
<b>Wellbore:</b>	OH	<b>Survey Calculation Method:</b>	Minimum Curvature
<b>Design:</b>	10H As Drilled	<b>Database:</b>	Northeast District

Survey									
Measured Depth (ft)	Inclination (°)	Azimuth (°)	Vertical Depth (ft)	+N/-S (ft)	+E/-W (ft)	Vertical Section (ft)	Dogleg Rate (°/100usft)	Build Rate (°/100usft)	Turn Rate (°/100usft)
8,031.00	88.49	159.89	6,604.10	-1,076.00	1,680.75	1,783.20	0.72	0.69	-0.22
8,094.00	88.62	160.73	6,605.69	-1,135.29	1,701.97	1,845.02	1.35	0.21	1.33
8,158.00	88.83	159.91	6,607.11	-1,195.54	1,723.52	1,907.83	1.32	0.33	-1.28
8,221.00	88.83	159.55	6,608.40	-1,254.63	1,745.34	1,969.78	0.57	0.00	-0.57
8,284.00	89.36	160.73	6,609.39	-1,313.87	1,766.74	2,031.64	2.05	0.64	1.87
8,348.00	89.43	161.46	6,610.07	-1,374.41	1,787.47	2,094.29	1.15	0.11	1.14
8,412.00	89.90	161.33	6,610.44	-1,435.07	1,807.89	2,156.87	0.76	0.73	-0.20
8,475.00	90.81	161.76	6,610.05	-1,494.83	1,827.83	2,218.43	1.60	1.44	0.68
8,539.00	90.90	161.70	6,609.10	-1,555.59	1,847.90	2,280.93	0.17	0.14	-0.09
8,602.00	89.63	164.34	6,608.80	-1,615.84	1,866.29	2,342.13	4.65	-2.02	4.19
8,666.00	88.69	164.20	6,609.74	-1,677.44	1,883.64	2,403.95	1.48	-1.47	-0.22
8,727.00	88.19	162.89	6,611.40	-1,735.91	1,900.91	2,463.05	2.30	-0.82	-2.15
8,791.00	87.85	161.95	6,613.61	-1,796.89	1,920.23	2,525.34	1.56	-0.53	-1.47
8,855.00	88.36	163.24	6,615.73	-1,857.92	1,939.36	2,587.59	2.17	0.80	2.02
8,919.00	89.19	165.61	6,617.10	-1,919.55	1,956.54	2,649.36	3.92	1.30	3.70
8,982.00	88.25	165.70	6,618.51	-1,980.57	1,972.15	2,709.80	1.50	-1.49	0.14
9,046.00	86.94	166.25	6,621.19	-2,042.61	1,987.64	2,771.05	2.22	-2.05	0.86
9,110.00	87.38	165.88	6,624.36	-2,104.65	2,003.04	2,832.26	0.90	0.69	-0.58
9,171.00	87.38	165.58	6,627.15	-2,163.71	2,018.06	2,890.71	0.49	0.00	-0.49
9,235.00	88.59	165.51	6,629.40	-2,225.64	2,034.02	2,952.11	1.89	1.89	-0.11
9,297.00	88.96	165.28	6,630.73	-2,285.62	2,049.65	3,011.67	0.70	0.60	-0.37
9,361.00	88.06	165.14	6,632.39	-2,347.48	2,065.98	3,073.20	1.42	-1.41	-0.22
9,424.00	87.78	165.63	6,634.68	-2,408.40	2,081.87	3,133.70	0.90	-0.44	0.78
9,488.00	87.22	163.79	6,637.47	-2,470.08	2,098.73	3,195.34	3.00	-0.88	-2.88
9,552.00	86.92	162.24	6,640.74	-2,531.20	2,117.40	3,257.43	2.46	-0.47	-2.42
9,616.00	86.84	162.42	6,644.22	-2,592.09	2,136.80	3,319.69	0.31	-0.13	0.28
9,679.00	88.09	161.92	6,647.01	-2,652.01	2,156.07	3,381.05	2.14	1.98	-0.79
9,742.00	89.09	162.12	6,648.56	-2,711.91	2,175.51	3,442.48	1.62	1.59	0.32
9,806.00	89.73	161.32	6,649.22	-2,772.68	2,195.58	3,504.98	1.60	1.00	-1.25
9,870.00	88.39	160.44	6,650.27	-2,833.14	2,216.54	3,567.67	2.50	-2.09	-1.38
9,933.00	87.38	159.85	6,652.60	-2,892.35	2,237.92	3,629.50	1.86	-1.60	-0.94
9,996.00	87.78	160.09	6,655.26	-2,951.49	2,259.48	3,691.36	0.74	0.63	0.38
10,060.00	88.32	160.22	6,657.43	-3,011.65	2,281.20	3,754.18	0.87	0.84	0.20
10,123.00	88.76	159.69	6,659.04	-3,070.81	2,302.78	3,816.07	1.09	0.70	-0.84
10,186.00	88.82	160.14	6,660.37	-3,129.97	2,324.41	3,877.98	0.72	0.10	0.71
10,249.00	89.36	160.87	6,661.37	-3,189.35	2,345.44	3,939.78	1.44	0.86	1.16
10,313.00	89.46	160.26	6,662.03	-3,249.70	2,366.73	4,002.54	0.97	0.16	-0.95
10,377.00	88.66	159.70	6,663.08	-3,309.82	2,388.64	4,065.42	1.53	-1.25	-0.88
10,440.00	88.59	158.24	6,664.59	-3,368.61	2,411.24	4,127.51	2.32	-0.11	-2.32
10,504.00	88.35	157.48	6,666.30	-3,427.87	2,435.35	4,190.77	1.24	-0.38	-1.19
10,567.00	87.85	156.95	6,668.39	-3,485.92	2,459.73	4,253.14	1.16	-0.79	-0.84
10,630.00	86.78	157.68	6,671.34	-3,543.98	2,484.00	4,315.46	2.06	-1.70	1.16
10,694.00	86.47	159.33	6,675.11	-3,603.42	2,507.41	4,378.52	2.62	-0.48	2.58



**Scientific Drilling International**  
Survey Report



<b>Company:</b>	Stone Energy Corporation	<b>Local Co-ordinate Reference:</b>	Well Erlewine 10H - Slot 10H
<b>Project:</b>	Mary Prospect	<b>TVD Reference:</b>	GL 1212' & KB 18' @ 1230.00ft (Saxon 141)
<b>Site:</b>	Erlewine Pad	<b>MD Reference:</b>	GL 1212' & KB 18' @ 1230.00ft (Saxon 141)
<b>Well:</b>	Erlewine 10H	<b>North Reference:</b>	Grid
<b>Wellbore:</b>	OH	<b>Survey Calculation Method:</b>	Minimum Curvature
<b>Design:</b>	10H As Drilled	<b>Database:</b>	Northeast District

Measured Depth (ft)	Inclination (°)	Azimuth (°)	Vertical Depth (ft)	+N/-S (ft)	+E/-W (ft)	Vertical Section (ft)	Dogleg Rate (°/100usft)	Build Rate (°/100usft)	Turn Rate (°/100usft)
10,758.00	86.81	159.09	6,678.86	-3,663.15	2,530.09	4,441.46	0.65	0.53	-0.38
10,822.00	88.29	161.96	6,681.59	-3,723.43	2,551.40	4,504.17	5.04	2.31	4.48
10,885.00	89.73	163.15	6,682.68	-3,783.52	2,570.29	4,565.48	2.96	2.29	1.89
10,949.00	89.77	163.57	6,682.96	-3,844.84	2,588.61	4,627.56	0.66	0.06	0.66
11,013.00	89.43	163.12	6,683.41	-3,906.15	2,606.96	4,689.65	0.88	-0.53	-0.70
11,077.00	89.87	162.97	6,683.80	-3,967.37	2,625.62	4,751.82	0.73	0.69	-0.23
11,140.00	90.64	161.94	6,683.52	-4,027.44	2,644.61	4,813.17	2.04	1.22	-1.63
11,204.00	88.93	160.83	6,683.76	-4,088.08	2,665.04	4,875.74	3.19	-2.67	-1.73
11,268.00	87.88	161.36	6,685.54	-4,148.61	2,685.77	4,938.37	1.84	-1.64	0.83
11,331.00	88.35	162.94	6,687.61	-4,208.54	2,705.07	4,999.76	2.62	0.75	2.51
11,395.00	88.29	163.80	6,689.49	-4,269.84	2,723.37	5,061.81	1.35	-0.09	1.34
11,459.00	87.72	163.80	6,691.72	-4,331.26	2,741.22	5,123.74	0.89	-0.89	0.00
11,523.00	87.52	162.73	6,694.38	-4,392.49	2,759.63	5,185.79	1.70	-0.31	-1.67
11,586.00	87.69	163.05	6,697.01	-4,452.65	2,778.15	5,246.98	0.57	0.27	0.51
11,649.00	87.65	163.78	6,699.57	-4,512.98	2,796.12	5,308.03	1.16	-0.06	1.16
11,713.00	87.55	163.15	6,702.25	-4,574.28	2,814.32	5,370.03	1.00	-0.16	-0.98
11,777.00	87.92	163.17	6,704.78	-4,635.49	2,832.84	5,432.12	0.58	0.58	0.03
11,840.00	88.96	162.83	6,706.49	-4,695.71	2,851.25	5,493.30	1.74	1.65	-0.54
11,904.00	88.86	162.54	6,707.71	-4,756.80	2,870.30	5,555.55	0.48	-0.16	-0.45
11,967.00	88.82	162.06	6,708.99	-4,816.81	2,889.45	5,616.93	0.76	-0.06	-0.76
12,031.00	89.60	161.73	6,709.87	-4,877.63	2,909.34	5,679.38	1.32	1.22	-0.52
<b>Last SDI MWD Survey @ MD 12031</b>									
12,098.00	89.60	161.73	6,710.34	-4,941.25	2,930.34	5,744.81	0.00	0.00	0.00
<b>Projection to Bit @ 12098 MD</b>									

Measured Depth (ft)	Vertical Depth (ft)	Local Coordinates		Comment
		+N/-S (ft)	+E/-W (ft)	
108.00	108.00	0.39	-0.16	First SDI Gyro Survey @ MD 108
2,385.00	2,384.82	3.40	1.02	Last SDI Gyro Survey @ MD 2385
2,496.00	2,495.82	2.25	1.80	First SDI MWD Survey @ MD 2488.00
12,031.00	6,709.87	-4,877.63	2,909.34	Last SDI MWD Survey @ MD 12031
12,098.00	6,710.34	-4,941.25	2,930.34	Projection to Bit @ 12098 MD

Checked By: \_\_\_\_\_ Approved By: \_\_\_\_\_ Date: \_\_\_\_\_