



Stone Energy Corporation

Mary Prospect
Erlewine Pad
Erlewine 3H - Slot 3H

ST01

Design: 3H ST01 As Drilled

Standard Survey Report

28 January, 2015



www.scientificdrilling.com

RECEIVED
Office of Oil and Gas

MAR 13 2015

WV Department of
Environmental Protection

06/02/2017



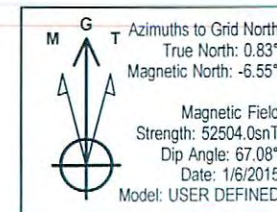
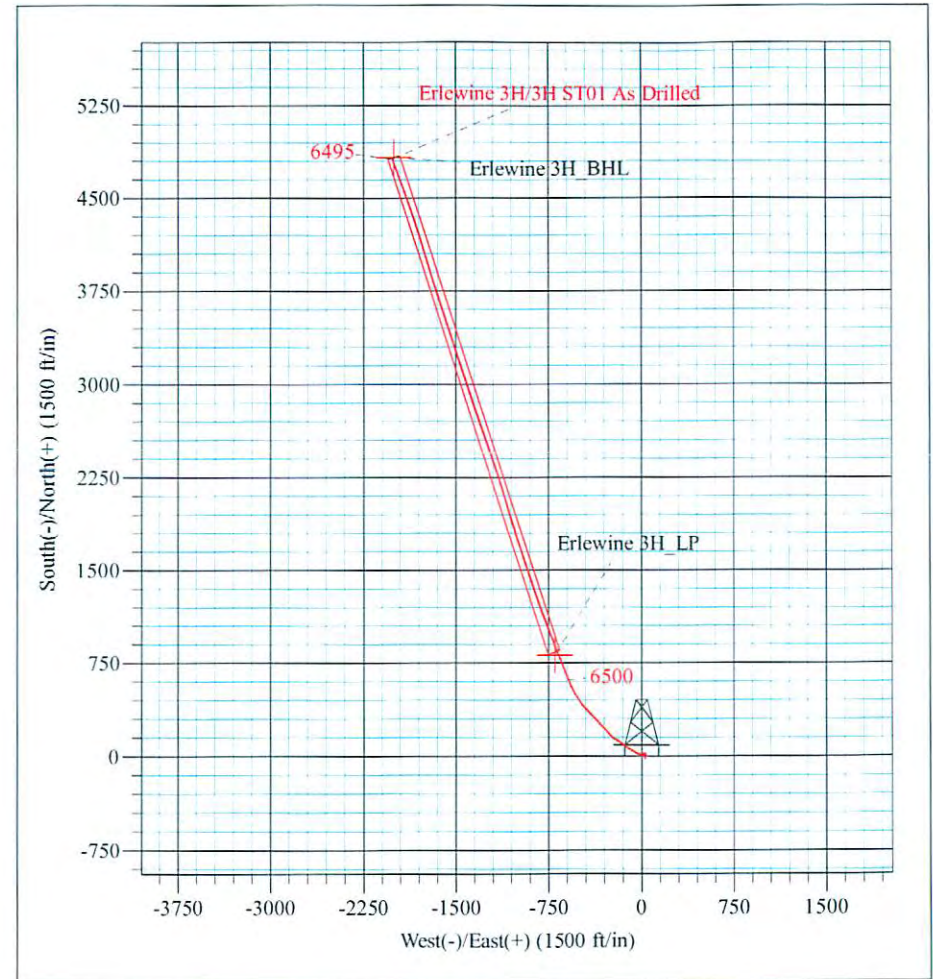
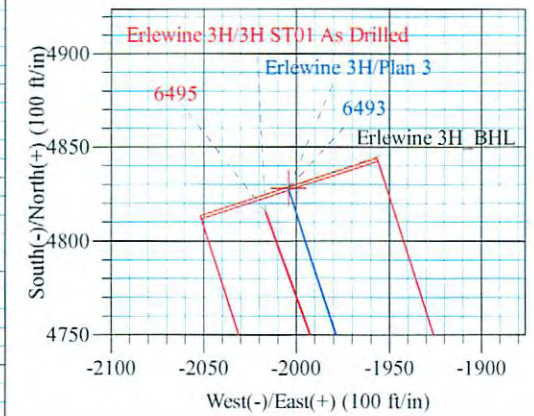
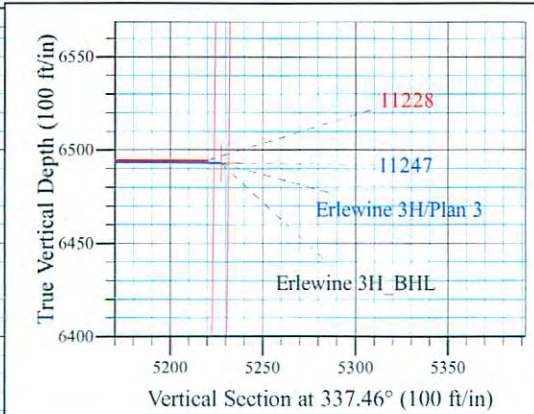
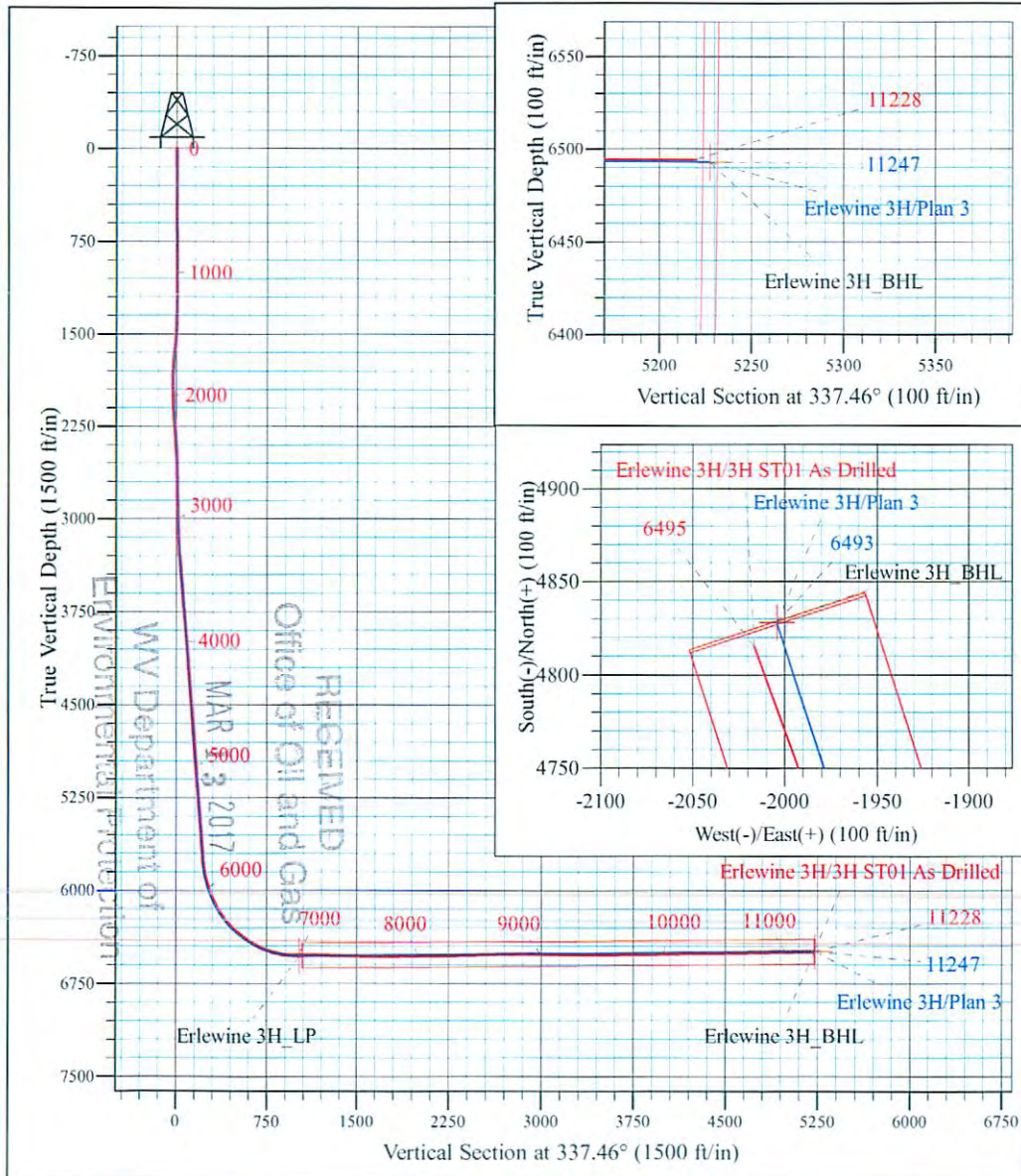
Erlewine Pad
 Erlewine 3H
 Plan 3
 GL 1212' & KB 18' @ 1230.00ft (Saxon 141)
 Mary Prospect

PROJECT DETAILS:
 Geodetic System: US State Plane 1927 (Exact solution)
 Datum: NAD 1927 (NADCON CONUS)
 Ellipsoid: Clarke 1866
 Zone: West Virginia North 4701
 System Datum: Mean Sea Level



WELL DETAILS: Erlewine 3H

+N/-S	+E/-W	Northing	Easting	Latitude	Longitude
0.00	0.00	433692.00	1634887.00	39° 41' 0.583 N	80° 47' 50.404 W



Shane Rhodes
 9:11, January 28 2015
 Scientific Drilling International
 124 Vista Drive
 Charleroi, PA 15022



Company:	Stone Energy Corporation	Local Co-ordinate Reference:	Well Erlewine 3H - Slot 3H
Project:	Mary Prospect	TVD Reference:	GL 1212' & KB 18' @ 1230.00ft (Saxon 141)
Site:	Erlewine Pad	MD Reference:	GL 1212' & KB 18' @ 1230.00ft (Saxon 141)
Well:	Erlewine 3H	North Reference:	Grid
Wellbore:	ST01	Survey Calculation Method:	Minimum Curvature
Design:	3H ST01 As Drilled	Database:	Northeast District

Project	Mary Prospect, Wetzel County, West Virginia		
Map System:	US State Plane 1927 (Exact solution)	System Datum:	Mean Sea Level
Geo Datum:	NAD 1927 (NADCON CONUS)		
Map Zone:	West Virginia North 4701		

Site	Erlewine Pad				
Site Position:		Northing:	433,674.00 usft	Latitude:	39° 41' 0.404 N
From:	Map	Easting:	1,634,878.00 usft	Longitude:	80° 47' 50.515 W
Position Uncertainty:	0.00 ft	Slot Radius:	13-3/16 "	Grid Convergence:	-0.83 °

Well	Erlewine 3H - Slot 3H					
Well Position	+N/-S	0.00 ft	Northing:	433,692.00 usft	Latitude:	39° 41' 0.583 N
	+E/-W	0.00 ft	Easting:	1,634,887.00 usft	Longitude:	80° 47' 50.404 W
Position Uncertainty		0.00 ft	Wellhead Elevation:	0.00 ft	Ground Level:	1,212.00 ft

Wellbore	ST01				
Magnetics	Model Name	Sample Date	Declination (°)	Dip Angle (°)	Field Strength (nT)
	HDGM	7/3/2014	-7.62	67.17	52,575
	User Defined	1/6/2015	-7.38	67.08	52,504

Design	3H ST01 As Drilled				
Audit Notes:					
Version:	1.0	Phase:	ACTUAL	Tie On Depth:	1,200.00
Vertical Section:	Depth From (TVD) (ft)	+N/-S (ft)	+E/-W (ft)	Direction (°)	
	0.00	0.00	0.00	337.45	

Survey Program	Date	1/28/2015			
From (ft)	To (ft)	Survey (Wellbore)	Tool Name	Description	
108.00	1,200.00	Survey 1 - SDI Gyro (OH)	SDI Standard Keeper 103	SDI Standard Wireline Keeper ver 1.0.3	
1,308.00	2,347.00	Survey 2 - SDI Gyro (ST01)	SDI Standard Keeper 103	SDI Standard Wireline Keeper ver 1.0.3	
2,347.00	11,228.00	Survey 3 - SDI MWD (ST01)	MWD SDI	MWD - Standard ver 1.0.1	

Survey										
Measured Depth (ft)	Inclination (°)	Azimuth (°)	Vertical Depth (ft)	+N/-S (ft)	+E/-W (ft)	Vertical Section (ft)	Dogleg Rate (°/100usft)	Build Rate (°/100usft)	Turn Rate (°/100usft)	
0.00	0.00	0.00	0.00	0.00	0.00	0.00	0.00	0.00	0.00	0.00
108.00	0.45	327.25	108.00	0.36	-0.23	0.42	0.42	0.42	0.00	0.00
208.00	0.45	323.67	208.00	1.00	-0.67	1.19	0.03	0.00	-3.58	
308.00	0.45	333.42	307.99	1.67	-1.08	1.96	0.08	0.00	9.75	
408.00	0.38	341.79	407.99	2.34	-1.36	2.68	0.09	-0.07	8.37	
508.00	0.45	5.70	507.99	3.04	-1.43	3.36	0.19	0.07	23.91	
608.00	0.40	12.33	607.98	3.77	-1.31	3.99	0.07	-0.05	6.63	
708.00	0.41	37.28	707.98	4.40	-1.02	4.46	0.18	0.01	24.95	

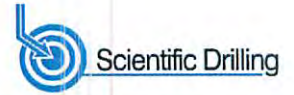


Company:	Stone Energy Corporation	Local Co-ordinate Reference:	Well Erlewine 3H - Slot 3H
Project:	Mary Prospect	TVD Reference:	GL 1212' & KB 18' @ 1230.00ft (Saxon 141)
Site:	Erlewine Pad	MD Reference:	GL 1212' & KB 18' @ 1230.00ft (Saxon 141)
Well:	Erlewine 3H	North Reference:	Grid
Wellbore:	ST01	Survey Calculation Method:	Minimum Curvature
Design:	3H ST01 As Drilled	Database:	Northeast District

Survey										
Measured Depth (ft)	Inclination (°)	Azimuth (°)	Vertical Depth (ft)	+N/-S (ft)	+E/-W (ft)	Vertical Section (ft)	Dogleg Rate (°/100usft)	Build Rate (°/100usft)	Turn Rate (°/100usft)	
808.00	0.41	33.57	807.98	4.98	-0.61	4.84	0.03	0.00	-3.71	
908.00	0.33	53.66	907.98	5.45	-0.18	5.10	0.15	-0.08	20.09	
1,008.00	0.29	51.16	1,007.98	5.78	0.25	5.24	0.04	-0.04	-2.50	
1,108.00	0.32	71.76	1,107.97	6.03	0.71	5.29	0.11	0.03	20.60	
1,200.00	0.28	48.36	1,199.97	6.26	1.13	5.35	0.14	-0.04	-25.43	
1,308.00	0.82	136.34	1,307.97	5.87	1.86	4.71	0.79	0.50	81.46	
1,375.00	3.06	97.21	1,374.93	5.30	3.96	3.38	3.70	3.34	-58.40	
1,408.00	4.20	88.61	1,407.86	5.22	6.05	2.50	3.82	3.45	-26.06	
1,508.00	5.07	101.64	1,507.54	4.42	14.03	-1.30	1.36	0.87	13.03	
1,608.00	6.08	142.44	1,607.10	-0.67	21.59	-8.90	4.00	1.01	40.80	
1,708.00	5.81	181.98	1,706.60	-9.93	24.65	-18.63	4.02	-0.27	39.54	
1,808.00	2.42	180.17	1,806.33	-17.10	24.47	-25.18	3.39	-3.39	-1.81	
1,908.00	0.91	316.87	1,906.31	-18.64	23.92	-26.38	3.14	-1.51	136.70	
2,008.00	1.95	357.73	2,006.27	-16.36	23.31	-24.04	1.40	1.04	40.86	
2,108.00	3.03	2.08	2,106.18	-12.02	23.34	-20.05	1.10	1.08	4.35	
2,191.00	4.48	5.00	2,189.00	-6.59	23.70	-15.18	1.76	1.75	3.52	
2,208.00	4.50	2.14	2,205.95	-5.27	23.78	-13.98	1.32	0.12	-16.82	
2,308.00	5.00	4.36	2,305.60	3.00	24.26	-6.53	0.53	0.50	2.22	
2,347.00	4.50	12.84	2,344.47	6.19	24.73	-3.77	2.21	-1.28	21.74	
Last SDI Gyro @ 2347 MD										
2,432.00	4.59	20.92	2,429.20	12.61	26.68	1.42	0.76	0.11	9.51	
First SDI MWD @ 2432 MD										
2,526.00	2.78	29.43	2,523.01	18.11	29.15	5.55	2.01	-1.93	9.05	
2,620.00	0.76	16.97	2,616.96	20.69	30.45	7.44	2.17	-2.15	-13.26	
2,715.00	2.28	285.01	2,711.93	21.79	28.81	9.07	2.56	1.60	-96.80	
2,809.00	4.45	268.55	2,805.76	22.18	23.35	11.53	2.50	2.31	-17.51	
2,903.00	6.38	264.49	2,899.34	21.59	14.51	14.37	2.09	2.05	-4.32	
2,997.00	6.36	259.16	2,992.76	20.10	4.20	16.96	0.63	-0.02	-5.67	
3,091.00	5.89	259.98	3,086.22	18.29	-5.67	19.06	0.51	-0.50	0.87	
3,185.00	6.11	269.37	3,179.71	17.39	-15.42	21.97	1.07	0.23	9.99	
3,279.00	6.52	284.19	3,273.15	18.65	-25.59	27.04	1.78	0.44	15.77	
3,373.00	6.97	291.02	3,366.50	22.00	-36.09	34.16	0.98	0.48	7.27	
3,467.00	6.64	299.26	3,459.84	26.70	-46.16	42.36	1.10	-0.35	8.77	
3,561.00	6.55	308.61	3,553.22	32.70	-55.09	51.33	1.15	-0.10	9.95	
3,655.00	6.27	305.87	3,646.63	39.06	-63.44	60.40	0.44	-0.30	-2.91	
3,750.00	5.82	305.82	3,741.10	44.92	-71.55	68.92	0.47	-0.47	-0.05	
3,844.00	4.88	303.30	3,834.69	49.90	-78.75	76.29	1.03	-1.00	-2.68	
3,938.00	5.75	299.63	3,928.29	54.42	-86.19	83.32	0.99	0.93	-3.90	
4,033.00	5.72	295.38	4,022.81	58.81	-94.60	90.59	0.45	-0.03	-4.47	
4,127.00	5.30	292.49	4,116.38	62.47	-102.85	97.14	0.54	-0.45	-3.07	
4,221.00	4.81	290.70	4,210.01	65.53	-110.54	102.91	0.55	-0.52	-1.90	
4,315.00	5.33	298.52	4,303.64	69.01	-118.07	109.01	0.92	0.55	8.32	
4,409.00	5.88	309.37	4,397.20	74.14	-125.63	116.65	1.27	0.59	11.54	
4,503.00	5.52	309.93	4,490.73	80.10	-132.82	124.91	0.39	-0.38	0.60	



Scientific Drilling International
Survey Report



Company:	Stone Energy Corporation	Local Co-ordinate Reference:	Well Erlewine 3H - Slot 3H
Project:	Mary Prospect	TVD Reference:	GL 1212' & KB 18' @ 1230.00ft (Saxon 141)
Site:	Erlewine Pad	MD Reference:	GL 1212' & KB 18' @ 1230.00ft (Saxon 141)
Well:	Erlewine 3H	North Reference:	Grid
Wellbore:	ST01	Survey Calculation Method:	Minimum Curvature
Design:	3H ST01 As Drilled	Database:	Northeast District

Survey										
Measured Depth (ft)	Inclination (°)	Azimuth (°)	Vertical Depth (ft)	+N/-S (ft)	+E/-W (ft)	Vertical Section (ft)	Dogleg Rate (°/100usft)	Build Rate (°/100usft)	Turn Rate (°/100usft)	
4,597.00	5.28	312.70	4,584.31	85.94	-139.46	132.85	0.38	-0.26	2.95	
4,692.00	4.90	308.64	4,678.94	91.43	-145.84	140.37	0.55	-0.40	-4.27	
4,786.00	4.94	306.54	4,772.59	96.35	-152.23	147.36	0.20	0.04	-2.23	
4,880.00	4.65	303.60	4,866.26	100.87	-158.66	154.00	0.40	-0.31	-3.13	
4,974.00	4.28	307.30	4,959.98	105.10	-164.62	160.20	0.50	-0.39	3.94	
5,068.00	5.08	306.85	5,053.67	109.72	-170.74	166.81	0.85	0.85	-0.48	
5,162.00	6.18	306.19	5,147.21	115.21	-178.15	174.72	1.17	1.17	-0.70	
5,256.00	5.92	305.63	5,240.69	121.02	-186.18	183.16	0.28	-0.28	-0.60	
5,350.00	5.61	302.11	5,334.21	126.28	-194.01	191.03	0.50	-0.33	-3.74	
5,444.00	5.12	298.57	5,427.80	130.73	-201.58	198.04	0.63	-0.52	-3.77	
5,538.00	4.97	302.43	5,521.44	134.92	-208.70	204.64	0.39	-0.16	4.11	
5,633.00	4.61	296.81	5,616.10	138.85	-215.59	210.91	0.62	-0.38	-5.92	
5,727.00	5.54	296.15	5,709.73	142.55	-223.03	217.19	0.99	0.99	-0.70	
5,749.00	5.83	297.77	5,731.63	143.54	-224.97	218.84	1.51	1.32	7.36	
5,780.00	5.79	297.12	5,762.47	144.99	-227.76	221.25	0.25	-0.13	-2.10	
5,811.00	7.42	306.35	5,793.26	146.89	-230.76	224.15	6.26	5.26	29.77	
5,841.00	9.65	312.46	5,822.93	149.74	-234.18	228.09	8.01	7.43	20.37	
5,871.00	11.58	315.89	5,852.41	153.60	-238.13	233.17	6.77	6.43	11.43	
5,901.00	13.43	318.36	5,881.70	158.36	-242.54	239.26	6.42	6.17	8.23	
5,931.00	15.27	319.10	5,910.76	163.95	-247.44	246.31	6.16	6.13	2.47	
5,962.00	17.35	320.12	5,940.51	170.58	-253.08	254.60	6.77	6.71	3.29	
5,992.00	19.05	320.53	5,969.01	177.80	-259.06	263.55	5.68	5.67	1.37	
6,024.00	21.03	319.75	5,999.07	186.21	-266.09	274.02	6.24	6.19	-2.44	
6,055.00	23.26	318.02	6,027.79	195.01	-273.78	285.09	7.49	7.19	-5.58	
6,087.00	24.65	317.89	6,057.03	204.66	-282.48	297.34	4.35	4.34	-0.41	
6,119.00	27.25	317.09	6,085.80	214.97	-291.94	310.50	8.20	8.13	-2.50	
6,151.00	29.68	317.77	6,113.93	226.21	-302.26	324.83	7.66	7.59	2.13	
6,183.00	32.15	317.11	6,141.38	238.31	-313.38	340.27	7.79	7.72	-2.06	
6,215.00	34.21	316.99	6,168.16	251.13	-325.31	356.69	6.44	6.44	-0.38	
6,246.00	36.34	316.62	6,193.47	264.18	-337.57	373.44	6.91	6.87	-1.19	
6,278.00	38.91	316.29	6,218.81	278.34	-351.02	391.67	8.06	8.03	-1.03	
6,310.00	41.40	315.77	6,243.27	293.19	-365.35	410.88	7.85	7.78	-1.63	
6,342.00	43.98	315.52	6,266.79	308.70	-380.52	431.02	8.08	8.06	-0.78	
6,374.00	46.08	315.14	6,289.40	324.80	-396.44	451.99	6.62	6.56	-1.19	
6,406.00	48.83	315.51	6,311.04	341.56	-413.01	473.83	8.64	8.59	1.16	
6,437.00	51.18	316.59	6,330.96	358.66	-429.49	495.94	8.04	7.58	3.48	
6,469.00	52.51	318.01	6,350.73	377.15	-446.55	519.57	5.43	4.16	4.44	
6,501.00	54.11	319.75	6,369.85	396.49	-463.42	543.89	6.63	5.00	5.44	
6,533.00	55.44	322.28	6,388.31	416.81	-479.86	568.96	7.68	4.16	7.91	
6,564.00	56.69	324.50	6,405.61	437.45	-495.19	593.91	7.18	4.03	7.16	
6,596.00	58.97	327.09	6,422.65	459.85	-510.41	620.43	9.88	7.13	8.09	
6,628.00	60.82	329.23	6,438.70	483.37	-525.01	647.75	8.18	5.78	6.69	
6,660.00	63.26	331.62	6,453.71	507.95	-538.95	675.80	10.08	7.63	7.47	



Scientific Drilling International
Survey Report



Company:	Stone Energy Corporation	Local Co-ordinate Reference:	Well Erlewine 3H - Slot 3H
Project:	Mary Prospect	TVD Reference:	GL 1212' & KB 18' @ 1230.00ft (Saxon 141)
Site:	Erlewine Pad	MD Reference:	GL 1212' & KB 18' @ 1230.00ft (Saxon 141)
Well:	Erlewine 3H	North Reference:	Grid
Wellbore:	ST01	Survey Calculation Method:	Minimum Curvature
Design:	3H ST01 As Drilled	Database:	Northeast District

Survey									
Measured Depth (ft)	Inclination (°)	Azimuth (°)	Vertical Depth (ft)	+N/-S (ft)	+E/-W (ft)	Vertical Section (ft)	Dogleg Rate (°/100usft)	Build Rate (°/100usft)	Turn Rate (°/100usft)
6,692.00	65.32	333.38	6,467.59	533.52	-552.26	704.52	8.12	6.44	5.50
6,724.00	68.61	335.31	6,480.11	560.07	-565.00	733.92	11.68	10.28	6.03
6,755.00	71.39	336.34	6,490.71	586.64	-576.93	763.03	9.50	8.97	3.32
6,787.00	74.30	337.52	6,500.15	614.77	-588.90	793.60	9.75	9.09	3.69
6,819.00	76.06	338.53	6,508.34	643.46	-600.48	824.54	6.29	5.50	3.16
6,850.00	78.29	338.80	6,515.22	671.61	-611.47	854.76	7.24	7.19	0.87
6,882.00	80.23	338.66	6,521.18	700.91	-622.88	886.19	6.08	6.06	-0.44
6,913.00	84.05	338.58	6,525.42	729.50	-634.07	916.88	12.33	12.32	-0.26
6,945.00	87.85	338.40	6,527.68	759.19	-645.77	948.79	11.89	11.88	-0.56
7,009.00	89.87	337.51	6,528.95	818.49	-669.79	1,012.77	3.45	3.16	-1.39
7,072.00	89.90	337.99	6,529.08	876.80	-693.64	1,075.77	0.76	0.05	0.76
7,136.00	90.27	338.29	6,528.98	936.20	-717.47	1,139.77	0.74	0.58	0.47
7,199.00	89.90	338.87	6,528.89	994.85	-740.48	1,202.75	1.09	-0.59	0.92
7,263.00	90.23	338.89	6,528.82	1,054.55	-763.54	1,266.73	0.52	0.52	0.03
7,326.00	89.56	339.50	6,528.93	1,113.44	-785.92	1,329.70	1.44	-1.06	0.97
7,389.00	89.06	340.45	6,529.69	1,172.63	-807.49	1,392.64	1.70	-0.79	1.51
7,450.00	89.43	341.13	6,530.49	1,230.22	-827.56	1,453.53	1.27	0.61	1.11
7,515.00	90.00	341.58	6,530.82	1,291.81	-848.34	1,518.37	1.12	0.88	0.69
7,578.00	89.53	341.23	6,531.08	1,351.52	-868.43	1,581.22	0.93	-0.75	-0.56
7,641.00	89.63	340.95	6,531.54	1,411.12	-888.84	1,644.10	0.47	0.16	-0.44
7,705.00	90.17	341.68	6,531.65	1,471.75	-909.35	1,707.95	1.42	0.84	1.14
7,769.00	90.57	341.95	6,531.24	1,532.55	-929.32	1,771.76	0.75	0.63	0.42
7,833.00	91.28	341.76	6,530.20	1,593.36	-949.25	1,835.56	1.15	1.11	-0.30
7,897.00	90.80	342.19	6,529.04	1,654.21	-969.05	1,899.35	1.01	-0.75	0.67
7,960.00	90.97	342.08	6,528.07	1,714.16	-988.37	1,962.14	0.32	0.27	-0.17
8,024.00	90.50	342.39	6,527.25	1,775.10	-1,007.90	2,025.91	0.88	-0.73	0.48
8,088.00	90.37	342.62	6,526.76	1,836.14	-1,027.14	2,089.66	0.41	-0.20	0.36
8,150.00	91.07	343.26	6,525.98	1,895.41	-1,045.33	2,151.37	1.53	1.13	1.03
8,213.00	90.67	343.11	6,525.03	1,955.71	-1,063.55	2,214.04	0.68	-0.63	-0.24
8,277.00	90.60	343.20	6,524.32	2,016.96	-1,082.09	2,277.72	0.18	-0.11	0.14
8,341.00	91.47	343.85	6,523.16	2,078.32	-1,100.24	2,341.35	1.70	1.36	1.02
8,404.00	92.25	343.89	6,521.12	2,138.81	-1,117.73	2,403.92	1.24	1.24	0.06
8,466.00	92.08	343.08	6,518.77	2,198.21	-1,135.35	2,465.54	1.33	-0.27	-1.31
8,530.00	90.80	340.80	6,517.17	2,259.03	-1,155.18	2,529.31	4.08	-2.00	-3.56
8,593.00	91.01	340.31	6,516.17	2,318.43	-1,176.15	2,592.21	0.85	0.33	-0.78
8,657.00	90.20	340.25	6,515.49	2,378.67	-1,197.74	2,656.13	1.27	-1.27	-0.09
8,720.00	89.56	340.90	6,515.63	2,438.08	-1,218.69	2,719.04	1.45	-1.02	1.03
8,783.00	90.40	340.98	6,515.65	2,497.63	-1,239.27	2,781.92	1.34	1.33	0.13
8,847.00	90.57	340.96	6,515.11	2,558.13	-1,260.13	2,845.80	0.27	0.27	-0.03
8,910.00	89.30	340.89	6,515.18	2,617.67	-1,280.72	2,908.68	2.02	-2.02	-0.11
8,974.00	89.16	341.23	6,516.04	2,678.20	-1,301.49	2,972.55	0.57	-0.22	0.53
9,038.00	89.83	340.83	6,516.60	2,738.72	-1,322.30	3,036.42	1.22	1.05	-0.63
9,101.00	89.43	340.83	6,517.01	2,798.22	-1,342.98	3,099.31	0.63	-0.63	0.00



Scientific Drilling International
Survey Report



Company:	Stone Energy Corporation	Local Co-ordinate Reference:	Well Erlewine 3H - Slot 3H
Project:	Mary Prospect	TVD Reference:	GL 1212' & KB 18' @ 1230.00ft (Saxon 141)
Site:	Erlewine Pad	MD Reference:	GL 1212' & KB 18' @ 1230.00ft (Saxon 141)
Well:	Erlewine 3H	North Reference:	Grid
Wellbore:	ST01	Survey Calculation Method:	Minimum Curvature
Design:	3H ST01 As Drilled	Database:	Northeast District

Survey										
Measured Depth (ft)	Inclination (°)	Azimuth (°)	Vertical Depth (ft)	+N/-S (ft)	+E/-W (ft)	Vertical Section (ft)	Dogleg Rate (°/100usft)	Build Rate (°/100usft)	Turn Rate (°/100usft)	
9,165.00	89.80	340.93	6,517.44	2,858.69	-1,363.95	3,163.19	0.60	0.58	0.16	
9,228.00	89.70	341.85	6,517.71	2,918.40	-1,384.05	3,226.04	1.47	-0.16	1.46	
9,292.00	89.73	341.96	6,518.03	2,979.23	-1,403.93	3,289.85	0.18	0.05	0.17	
9,356.00	90.13	341.84	6,518.11	3,040.06	-1,423.81	3,353.65	0.65	0.63	-0.19	
9,419.00	89.53	341.22	6,518.30	3,099.82	-1,443.77	3,416.49	1.37	-0.95	-0.98	
9,482.00	90.10	341.98	6,518.50	3,159.59	-1,463.66	3,479.33	1.51	0.90	1.21	
9,546.00	91.51	341.26	6,517.60	3,220.32	-1,483.83	3,543.15	2.47	2.20	-1.13	
9,610.00	92.15	341.89	6,515.56	3,281.01	-1,504.05	3,606.95	1.40	1.00	0.98	
9,674.00	90.80	341.80	6,513.91	3,341.80	-1,523.99	3,670.74	2.11	-2.11	-0.14	
9,737.00	90.03	341.60	6,513.45	3,401.61	-1,543.77	3,733.56	1.26	-1.22	-0.32	
9,801.00	90.33	341.23	6,513.25	3,462.28	-1,564.16	3,797.41	0.74	0.47	-0.58	
9,865.00	90.17	341.64	6,512.97	3,522.94	-1,584.54	3,861.25	0.69	-0.25	0.64	
9,929.00	90.23	341.45	6,512.75	3,583.65	-1,604.80	3,925.09	0.31	0.09	-0.30	
9,993.00	91.54	341.62	6,511.76	3,644.35	-1,625.07	3,988.92	2.06	2.05	0.27	
10,056.00	91.24	341.77	6,510.23	3,704.14	-1,644.85	4,051.73	0.53	-0.48	0.24	
10,120.00	91.24	342.25	6,508.85	3,765.00	-1,664.61	4,115.51	0.75	0.00	0.75	
10,184.00	90.44	341.83	6,507.91	3,825.87	-1,684.34	4,179.30	1.41	-1.25	-0.66	
10,248.00	90.23	342.25	6,507.54	3,886.76	-1,704.08	4,243.09	0.73	-0.33	0.66	
10,312.00	91.31	343.60	6,506.68	3,947.93	-1,722.87	4,306.79	2.70	1.69	2.11	
10,375.00	90.91	343.37	6,505.46	4,008.32	-1,740.77	4,369.43	0.73	-0.63	-0.37	
10,439.00	90.77	343.31	6,504.52	4,069.62	-1,759.12	4,433.08	0.24	-0.22	-0.09	
10,503.00	90.97	342.67	6,503.55	4,130.82	-1,777.84	4,496.78	1.05	0.31	-1.00	
10,566.00	91.88	342.54	6,501.98	4,190.91	-1,796.67	4,559.50	1.46	1.44	-0.21	
10,630.00	91.34	342.08	6,500.18	4,251.86	-1,816.11	4,623.25	1.11	-0.84	-0.72	
10,693.00	90.40	341.60	6,499.22	4,311.72	-1,835.74	4,686.05	1.68	-1.49	-0.76	
10,757.00	91.24	341.62	6,498.31	4,372.44	-1,855.93	4,749.88	1.31	1.31	0.03	
10,820.00	91.21	340.85	6,496.96	4,432.08	-1,876.19	4,812.73	1.22	-0.05	-1.22	
10,884.00	90.23	339.97	6,496.16	4,492.37	-1,897.65	4,876.63	2.06	-1.53	-1.38	
10,948.00	90.10	339.39	6,495.97	4,552.39	-1,919.87	4,940.58	0.93	-0.20	-0.91	
11,011.00	90.74	339.70	6,495.51	4,611.41	-1,941.89	5,003.54	1.13	1.02	0.49	
11,074.00	90.70	339.82	6,494.72	4,670.52	-1,963.68	5,066.48	0.20	-0.06	0.19	
11,138.00	89.53	340.31	6,494.59	4,730.68	-1,985.50	5,130.42	1.98	-1.83	0.77	
11,170.00	90.13	339.76	6,494.69	4,760.76	-1,996.43	5,162.38	2.54	1.88	-1.72	
Last SDI MWD @ 11170 MD										
11,228.00	90.13	339.76	6,494.55	4,815.18	-2,016.49	5,220.34	0.00	0.00	0.00	
Projection to Bit @ 11228 MD										