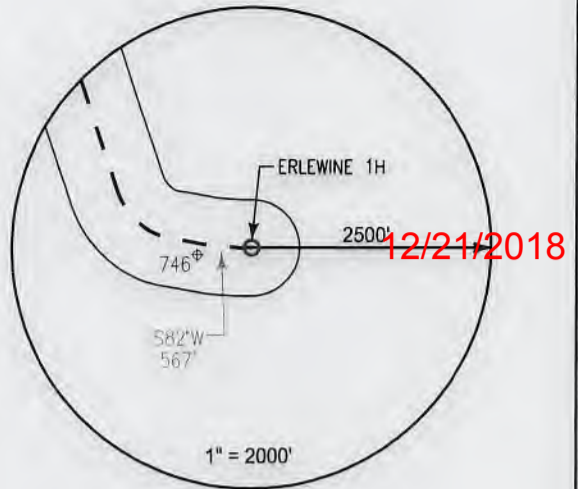






**Erlewine 1H**  
**Erlewine**  
**EQT Production Company**

Tract ID	Tax Map No.	Parcel No.	County	District	Surface Tract Owner	Acres
1	6	46	Wetzel	Proctor	Richard L. Erlewine	136.18
2	6	36	Wetzel	Proctor	Richard L. Erlewine	127.14
3	6	24	Wetzel	Proctor	George R. Baxter	83.92
4	6	24.1	Wetzel	Proctor	Robert Lee Sandridge	0.66
5	6	25	Wetzel	Proctor	Williams Ohio Valley	0.32
6	6	6	Wetzel	Proctor	Baxter Farm LLC	88.5
7	1	32	Wetzel	Proctor	Baxter Farm LLC	76.67
8	1	33	Wetzel	Proctor	William & Christina Wilkinson	0.99
9	1	29	Wetzel	Proctor	Baxter Farm LLC	2.11
10	1	N/A	Wetzel	Proctor	N/A	1.45
11	1	30	Wetzel	Proctor	Proctor Creek School	0.66
12	1	31	Wetzel	Proctor	Steven Jack & Susan Hafer	19.08
13	1	20	Wetzel	Proctor	Charles E. Frohnappel	124.67
14	1	34.1	Wetzel	Proctor	Herbert & Virginia Parsons	2.42
15	1	34	Wetzel	Proctor	Ronald J. & Linda Petrecca	29.06
16	6	52	Wetzel	Proctor	Ronald J. & Linda Petrecca	11.23
17	5	7.3	Wetzel	Proctor	Austin & Marlene Postlethwait	54.57
18	6	26.3	Wetzel	Proctor	Michael G. & Kathleen F. Baxter	18.7
19	6	26	Wetzel	Proctor	Larry K. Keene	6.26
20	6	26.4	Wetzel	Proctor	Larry K. Keene	0.44
21	6	38	Wetzel	Proctor	Ethel Anderson EST	12.56
22	6	30	Wetzel	Proctor	Albert Ray Anderson	102.63
23	6	40	Wetzel	Proctor	Kevin S. Goff	19.13
24	6	47	Wetzel	Proctor	Victor Richard Reed ET AL	5.55
25	7	34	Wetzel	Proctor	Kevin Goff	23.31
26	7	37	Wetzel	Proctor	Rost Energy Company	64.56
27	12	1	Wetzel	Proctor	Kevin Goff	28.69
28	11	5	Wetzel	Proctor	Emma L. & John J. Moore	30.34
29	11	3	Wetzel	Proctor	Christy Leek & Mary Wilson EST	52.33
30	6	45	Wetzel	Proctor	Christy Leek	29.51
31	6	45.1	Wetzel	Proctor	Donald F. & Martha J. Arrick	53.9
32	6	35	Wetzel	Proctor	Donald F. & Martha J. Arrick	58.96
33	6	23	Wetzel	Proctor	George Lemoine Horner & Joseph Lemoine Horner	156.55
34	6A	11	Wetzel	Proctor	Robert L. & Mary E. Stillwagoner	2.38
35	6	18	Wetzel	Proctor	Douglas Farrow	0.16
36	6A	11.2	Wetzel	Proctor	Robert L. & Mary Ellen Stillwagoner	0.32
37	6A	10	Wetzel	Proctor	Jay Edward & Kathleen S. Smith	3.33
38	6A	9	Wetzel	Proctor	Joyce Kay Morris	3.47
39	6A	8	Wetzel	Proctor	Candis Darlene Clark	3.67
40	6A	7	Wetzel	Proctor	Janice Capobianco	8.42
41	6	5	Wetzel	Proctor	Steven & Susan Louise Hafer	8.68
42	6	4	Wetzel	Proctor	Steven J. Hafer	6.91
43	1	27	Wetzel	Proctor	Steven J. Hafer	79.29
44	1	28	Wetzel	Proctor	Floyd R. & Mitzie Lou Cecil	87.73



**Notes:**  
**ERLEWINE 1H As-Built coordinates are**  
 NAD 27 N: 433,674.003 E: 1,634,878.000  
 NAD 27 Lat: 39.683446 Long: -80.797365  
 NAD 83 UTM N: 4,392,652.021 E: 517,392.092

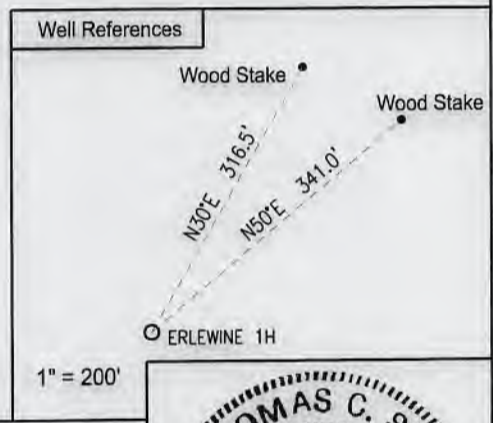
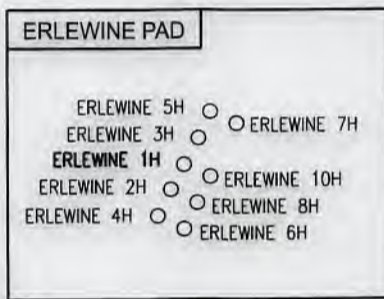
**ERLEWINE 1H As-Built Landing Point coordinates are**  
 NAD 27 N: 434,224.703 E: 1,633,492.930  
 NAD 27 Lat: 39.684902 Long: -80.802315  
 NAD 83 UTM N: 4,392,812.738 E: 516,967.321

**ERLEWINE 1H As-Built Bottom Hole coordinates are**  
 NAD 27 N: 438,308.783 E: 1,632,156.070  
 NAD 27 Lat: 39.696081 Long: -80.807275  
 NAD 83 UTM N: 4,394,050.172 E: 516,539.299

West Virginia Coordinates system of 1927 (North Zone)  
 based upon Differential GPS Measurements  
 Plat orientation, Corner and well ties are based upon  
 the grid north meridian  
 Well location references are based upon the grid north  
 meridian.  
 UTM coordinates are NAD83, Zone 17, Meters.

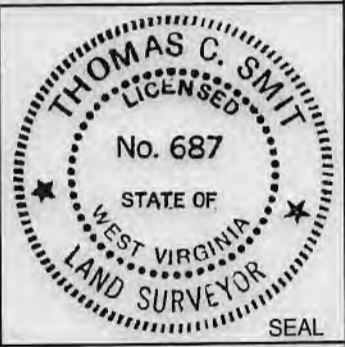
**LEGEND**

- ⊕ Active Well Location
- Proposed Gas Well
- Located Corner, as noted
- Surface Tract Lines
- - - - - Reference Line
- Lease Boundary
- Creek or Drain
- ⊙ WV County Route
- ⊠ WV State Route



I, the undersigned, hereby certify that this plat is correct to the best of my knowledge and belief and shows all the information required by law and the regulations issued and prescribed by the Department of Environmental Protection.

*L. L. S.*  
 L. L. S. 687



FILE NO: W2192 (BK 65-61)  
 DRAWING NO: \_\_\_\_\_  
 SCALE: 1" = 1000'  
 MINIMUM DEGREE OF ACCURACY:  
1:2500  
 PROVEN SOURCE OF ELEVATION:  
NGS CORS Station

**STATE OF WEST VIRGINIA**  
 DEPARTMENT OF ENVIRONMENTAL PROTECTION  
**OIL AND GAS DIVISION**

DATE: DECEMBER 11 20 18  
 OPERATORS WELL NO: ERLEWINE 1H  
 API WELL NO  
47 - 103 - 02950  
 STATE COUNTY PERMIT

WELL TYPE:  OIL  GAS  LIQUID INJECTION  WASTE DISPOSAL  
 (IF GAS) PRODUCTION:  STORAGE  DEEP  SHALLOW

LOCATION ELEVATION: 1,220' WATERSHED: TRIBUTARY OF PROCTOR CREEK QUADRANGLE: NEW MARTINSVILLE 7.5'  
 DISTRICT: Proctor COUNTY: Wetzel

SURFACE OWNER: Richard Erlewine ACREAGE: 135 ±  
 ROYALTY OWNER: Ronald Carney, et ux LEASE NO: 873753 ACREAGE: 130.20 ±

PROPOSED WORK:  DRILL  CONVERT  DRILL DEEPER  FRACTURE OR STIMULATE  PLUG OFF OLD FORMATION  
 PERFORATE NEW FORMATION  OTHER PHYSICAL CHANGE IN WELL (SPECIFY) \_\_\_\_\_  
 PLUG AND ABANDON  CLEAN OUT AND REPLUG TARGET FORMATION: Marcellus ESTIMATED DEPTH: 6,750'

WELL OPERATOR: EQT Production Company DESIGNATED AGENT: Jason Ranson  
 ADDRESS: 115 Professional Place PO Box 280 ADDRESS: 115 Professional Place PO Box 280  
Bridgeport, WV 26330 Bridgeport, WV 26330

AS-BUILT