



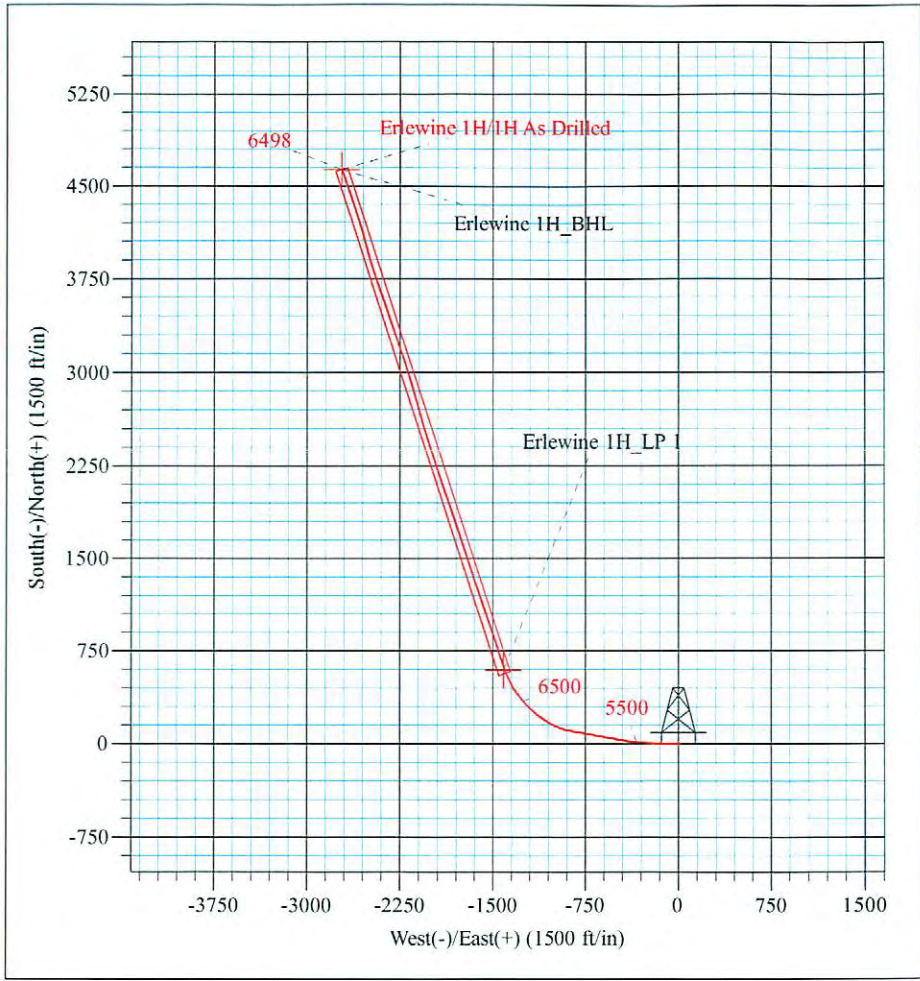
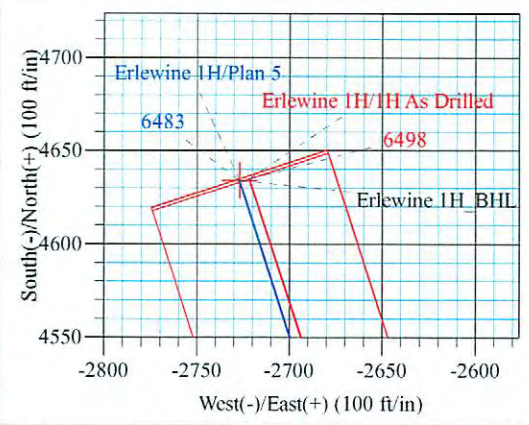
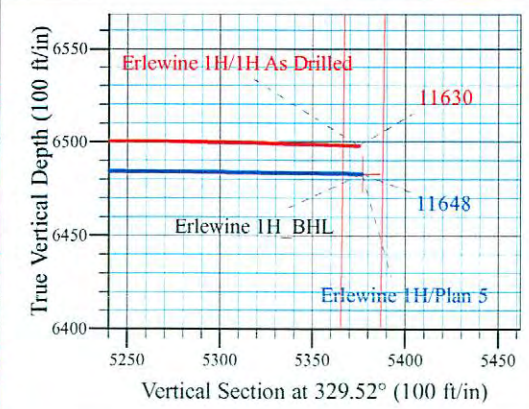
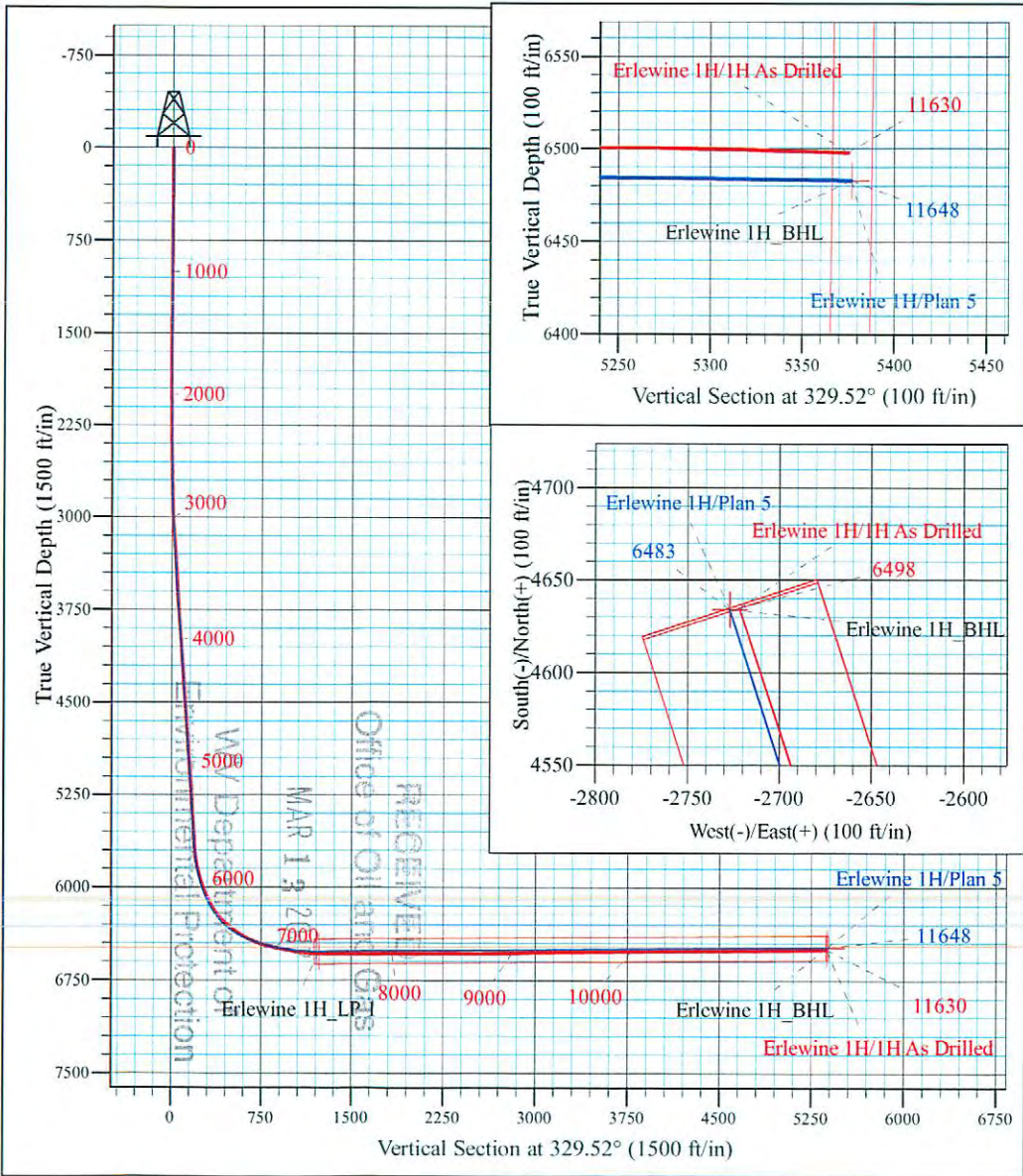
Erlewine Pad
 Erlewine 1H
 Plan 5
 GL 1212' & KB 18' @ 1230.00ft (Saxon 141)
 Mary Prospect

PROJECT DETAILS:
 Geodetic System: US State Plane 1927 (Exact solution)
 Datum: NAD 1927 (NADCON CONUS)
 Ellipsoid: Clarke 1866
 Zone: West Virginia North 4701
 System Datum: Mean Sea Level



WELL DETAILS: Erlewine 1H

+N/-S	+E/-W	Northing	Easting	Latitude	Longitude
0.00	0.00	433674.00	1634878.00	39° 41' 0.404 N	80° 47' 50.515 W



Azimuths to Grid North
 True North: 0.83°
 Magnetic North: -6.81°
 Magnetic Field
 Strength: 52499.0snT
 Dip Angle: 67.13°
 Date: 1/13/2015
 Model: USER DEFINED

Shane Rhodes
 8:35, January 28 2015
 Scientific Drilling International
 124 Vista Drive
 Charleroi, PA 15022



Stone Energy Corporation

Mary Prospect
Erlewine Pad
Erlewine 1H - Slot 1H

OH

Design: 1H As Drilled

Standard Survey Report

28 January, 2015



RECEIVED
Office of Oil and Gas

MAR 1 2017

www.scientificdrilling.com

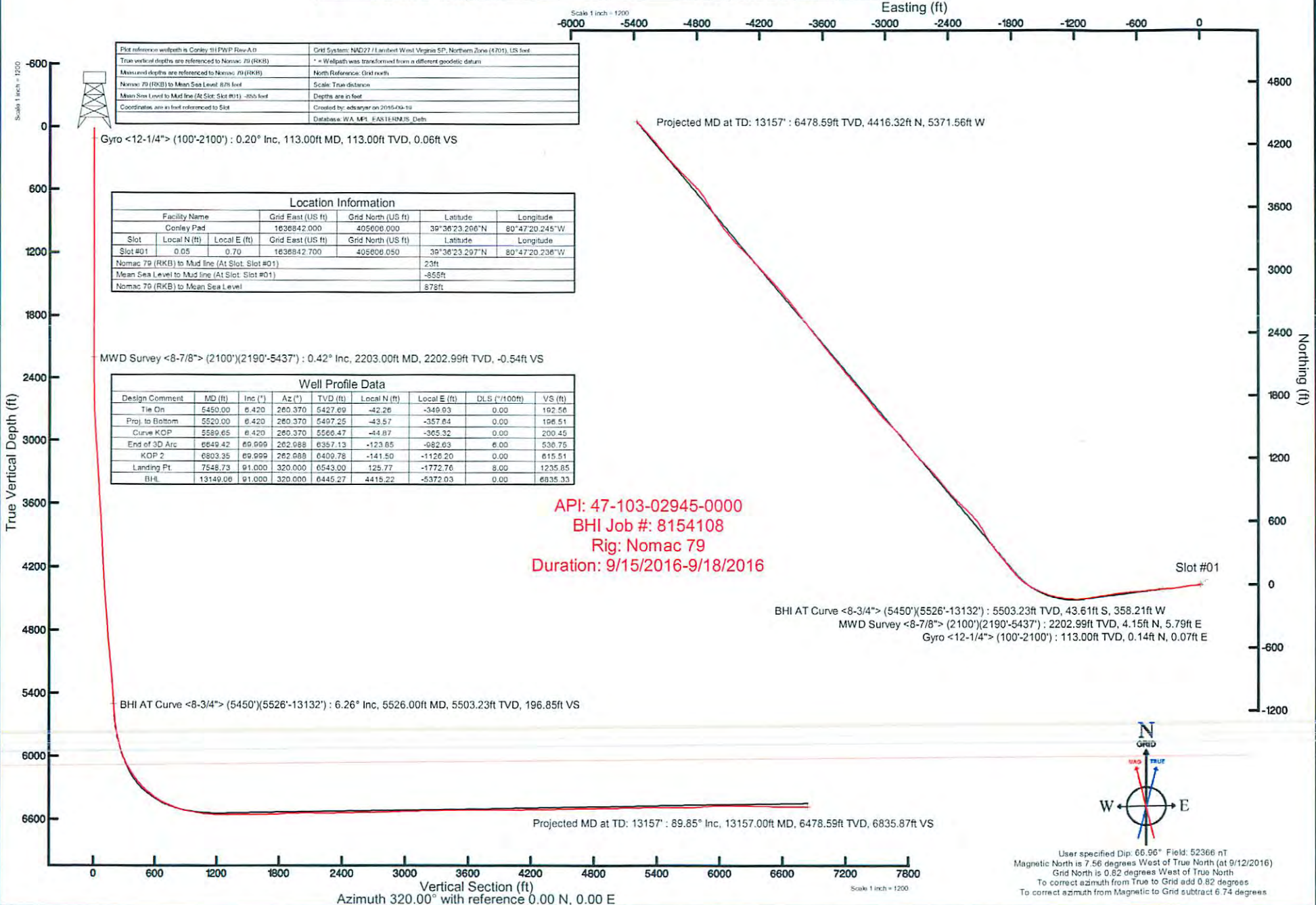
06/02/2017



STONE ENERGY CORPORATION

Location: Wetzel County, WV
Field: Wetzel
Facility: Conley Pad

Slot: Slot #01
Well: Conley 1H
Wellbore: Conley 1H PWB

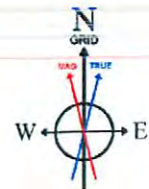


Plot reference wellbore is Conley 1H PWB Row A-0		Grid System: NAD27 / Lambert West Virginia SP, Northern Zone (4701), US feet	
True vertical depths are referenced to Normac 79 (RKB)		* = Wellpath was transformed from a different geoidic datum	
Measured depths are referenced to Normac 79 (RKB)		North Reference: Grid north	
Normac 79 (RKB) to Mean Sea Level: 876 feet		Scale: True distance	
Mean Sea Level to Mud line (At Slot: Slot #01) = -855 feet		Depths are in feet	
Coordinates are in feet referenced to Slot		Created by: edsanyer on 2016/09/19	
		Database: WA_MPL_EAST_HMPLS_Data	

Location Information						
Facility Name		Grid East (US ft)	Grid North (US ft)	Latitude	Longitude	
Conley Pad		1636842.000	405606.000	39°36'23.206"N	80°47'20.245"W	
Slot	Local N (ft)	Local E (ft)	Grid East (US ft)	Grid North (US ft)	Latitude	Longitude
Slot #01	0.05	0.70	1636842.700	405606.050	39°36'23.297"N	80°47'20.236"W
Normac 79 (RKB) to Mud line (At Slot: Slot #01)				23ft		
Mean Sea Level to Mud line (At Slot: Slot #01)				-855ft		
Normac 79 (RKB) to Mean Sea Level				876ft		

Well Profile Data								
Design Comment	MD (ft)	Inc (°)	Az (°)	TVD (ft)	Local N (ft)	Local E (ft)	DLS (°/100ft)	VS (ft)
Tie On	5450.00	6.420	260.370	5427.69	-42.26	-349.03	0.00	192.56
Proj. to Bottom	5520.00	6.420	260.370	5497.25	-43.57	-357.64	0.00	196.51
Curve KOP	5589.65	6.420	260.370	5566.47	-44.87	-365.32	0.00	200.45
End of 3D Arc	6649.42	69.999	262.988	6357.13	-123.65	-982.03	6.00	530.75
KOP 2	6803.35	69.999	262.988	6409.78	-141.50	-1126.20	0.00	615.51
Landing Pt.	7548.73	91.000	320.000	6543.00	125.77	-1772.76	8.00	1235.85
BHL	13149.06	91.000	320.000	6445.27	4415.22	-5372.03	0.00	6835.33

API: 47-103-02945-0000
BHI Job #: 8154108
Rig: Nomac 79
Duration: 9/15/2016-9/18/2016



User specified Dip: 66.96° Field: 52366 nT
Magnetic North is 7.56 degrees West of True North (at 9/12/2016)
Grid North is 0.82 degrees West of True North
To correct azimuth from True to Grid add 0.82 degrees
To correct azimuth from Magnetic to Grid subtract 6.74 degrees



Actual Wellpath Report

Conley 1H AWP Proj: 13157'

Page 1 of 8



REFERENCE WELLPATH IDENTIFICATION

Operator	STONE ENERGY CORPORATION	Slot	Slot #01
Area	Wetzel County, WV	Well	Conley 1H
Field	Wetzel	Wellbore	Conley 1H AWB
Facility	Conley Pad		

REPORT SETUP INFORMATION

Projection System	NAD27 / Lambert West Virginia SP, Northern Zone (4701), US feet	Software System	WellArchitect@ 5.0
North Reference	Grid	User	Edsaryar
Scale	0.999941	Report Generated	9/19/2016 at 10:57:24 AM
Convergence at slot	0.83° West	Database/Source file	WA_MPL_EASTERNUS_Defn/Conley_1H_AWP_Proj_13157_.xml

WELLPATH LOCATION

	Local coordinates		Grid coordinates		Geographic coordinates	
	North[ft]	East[ft]	Easting[US ft]	Northing[US ft]	Latitude	Longitude
Slot Location	0.05	0.70	1636842.70	405606.05	39°36'23.297"N	80°47'20.236"W
Facility Reference Pt			1636842.00	405606.00	39°36'23.296"N	80°47'20.245"W
Field Reference Pt			1579779.94	549851.05	40°00'00.000"N	81°00'00.000"W

WELLPATH DATUM

Calculation method	Minimum curvature	Nomac 79 (RKB) to Facility Vertical Datum	23.00ft
Horizontal Reference Pt	Slot	Nomac 79 (RKB) to Mean Sea Level	878.00ft
Vertical Reference Pt	Nomac 79 (RKB)	Nomac 79 (RKB) to Mud Line at Slot (Slot #01)	23.00ft
MD Reference Pt	Nomac 79 (RKB)	Section Origin	N 0.00, E 0.00 ft
Field Vertical Reference	Mean Sea Level	Section Azimuth	320.00°



Actual Wellpath Report

Conley 1H AWP Proj: 13157'

Page 2 of 8



REFERENCE WELLPATH IDENTIFICATION			
Operator	STONE ENERGY CORPORATION	Slot	Slot #01
Area	Wetzel County, WV	Well	Conley 1H
Field	Wetzel	Wellbore	Conley 1H AWB
Facility	Conley Pad		

WELLPATH DATA (141 stations) † = interpolated/extrapolated station																
MD [ft]	Inclination [°]	Azimuth [°]	TVD [ft]	Vert Sect [ft]	North [ft]	East [ft]	Grid East [US ft]	Grid North [US ft]	Latitude	Longitude	Closure Dist [ft]	Closure Dir [°]	DLS [°/100ft]	Build Rate [°/100ft]	Turn Rate [°/100ft]	
0.00†	0.000	26.740	0.00	0.00	0.00	0.00	1636842.70	405606.05	39°36'23.297"N	80°47'20.236"W	0.00	0.000	0.00	0.00	0.00	
23.00	0.000	26.740	23.00	0.00	0.00	0.00	1636842.70	405606.05	39°36'23.297"N	80°47'20.236"W	0.00	0.000	0.00	0.00	0.00	
113.00	0.200	26.740	113.00	0.06	0.14	0.07	1636842.77	405606.19	39°36'23.298"N	80°47'20.235"W	0.16	26.740	0.22	0.22	29.71	
213.00	0.240	39.200	213.00	0.17	0.46	0.28	1636842.98	405606.51	39°36'23.301"N	80°47'20.233"W	0.54	31.558	0.06	0.04	12.46	
313.00	0.100	52.000	313.00	0.21	0.67	0.48	1636843.18	405606.72	39°36'23.304"N	80°47'20.230"W	0.83	35.591	0.14	-0.14	12.80	
413.00	0.250	53.590	413.00	0.19	0.86	0.73	1636843.43	405606.91	39°36'23.305"N	80°47'20.227"W	1.12	40.287	0.15	0.15	1.59	
513.00	0.100	48.900	513.00	0.18	1.04	0.97	1636843.67	405607.09	39°36'23.307"N	80°47'20.224"W	1.42	42.833	0.15	-0.15	-4.69	
613.00	0.130	52.880	613.00	0.17	1.17	1.12	1636843.82	405607.22	39°36'23.309"N	80°47'20.222"W	1.62	43.857	0.03	0.03	3.98	
713.00	0.150	51.280	713.00	0.17	1.32	1.32	1636844.02	405607.37	39°36'23.310"N	80°47'20.220"W	1.87	44.923	0.02	0.02	-1.60	
813.00	0.160	54.500	813.00	0.15	1.48	1.53	1636844.23	405607.53	39°36'23.312"N	80°47'20.217"W	2.13	45.936	0.01	0.01	3.22	
913.00	0.200	52.140	913.00	0.13	1.67	1.78	1636844.48	405607.72	39°36'23.314"N	80°47'20.214"W	2.45	46.866	0.04	0.04	-2.36	
1013.00	0.150	55.240	1013.00	0.12	1.85	2.03	1636844.73	405607.90	39°36'23.316"N	80°47'20.211"W	2.75	47.597	0.05	-0.05	3.10	
1113.00	0.100	63.600	1113.00	0.08	1.97	2.22	1636844.92	405608.02	39°36'23.317"N	80°47'20.208"W	2.96	48.399	0.05	-0.05	8.36	
1213.00	0.210	42.260	1213.00	0.09	2.14	2.42	1636845.12	405608.19	39°36'23.318"N	80°47'20.206"W	3.23	48.458	0.12	0.11	-21.34	
1313.00	0.270	55.310	1312.99	0.09	2.41	2.73	1636845.43	405608.46	39°36'23.321"N	80°47'20.202"W	3.65	48.588	0.08	0.06	13.05	
1413.00	0.140	49.470	1412.99	0.07	2.62	3.02	1636845.72	405608.67	39°36'23.323"N	80°47'20.198"W	4.00	49.010	0.13	-0.13	-5.84	
1513.00	0.150	46.540	1512.99	0.08	2.79	3.21	1636845.91	405608.84	39°36'23.325"N	80°47'20.196"W	4.25	48.947	0.01	0.01	-2.93	
1613.00	0.130	36.370	1612.99	0.11	2.98	3.37	1636846.07	405609.03	39°36'23.327"N	80°47'20.194"W	4.50	48.563	0.03	-0.02	-10.17	
1713.00	0.180	49.750	1712.99	0.14	3.17	3.56	1636846.26	405609.22	39°36'23.329"N	80°47'20.191"W	4.76	48.314	0.06	0.05	13.38	
1813.00	0.450	51.800	1812.99	0.13	3.51	3.99	1636846.69	405609.56	39°36'23.332"N	80°47'20.186"W	5.31	48.614	0.27	0.27	2.05	
1913.00	0.100	61.890	1912.99	0.10	3.80	4.37	1636847.07	405609.85	39°36'23.335"N	80°47'20.181"W	5.79	49.028	0.35	-0.35	10.09	
2013.00	0.310	70.980	2012.99	-0.02	3.93	4.70	1636847.40	405609.98	39°36'23.336"N	80°47'20.177"W	6.13	50.155	0.21	0.21	9.09	
2113.00	0.310	75.240	2112.99	-0.23	4.08	5.22	1636847.92	405610.13	39°36'23.338"N	80°47'20.170"W	6.63	51.978	0.02	0.00	4.26	
2203.00	0.420	89.150	2202.99	-0.54	4.15	5.79	1636848.49	405610.20	39°36'23.339"N	80°47'20.163"W	7.12	54.356	0.16	0.12	15.46	
2309.00	0.910	28.740	2308.98	-0.48	4.89	6.58	1636849.28	405610.94	39°36'23.346"N	80°47'20.153"W	8.20	53.362	0.75	0.46	-56.99	
2403.00	1.630	262.660	2402.97	0.51	5.38	5.61	1636848.31	405611.43	39°36'23.351"N	80°47'20.165"W	7.77	46.229	2.43	0.77	-134.13	
2497.00	3.080	253.520	2496.89	2.24	4.49	1.87	1636844.57	405610.54	39°36'23.342"N	80°47'20.213"W	4.86	22.561	1.59	1.54	-9.72	
2591.00	3.910	248.610	2590.71	4.27	2.61	-3.54	1636839.16	405608.65	39°36'23.322"N	80°47'20.282"W	4.40	306.346	0.94	0.88	-5.22	
2685.00	4.660	261.640	2684.45	7.30	0.88	-10.30	1636832.40	405606.93	39°36'23.304"N	80°47'20.368"W	10.34	274.887	1.30	0.80	13.86	
2779.00	5.890	263.280	2778.05	11.95	-0.24	-18.87	1636823.83	405605.81	39°36'23.292"N	80°47'20.477"W	18.87	269.275	1.32	1.31	1.74	



Actual Wellpath Report

Conley 1H AWP Proj: 13157'

Page 3 of 8



REFERENCE WELLPATH IDENTIFICATION			
Operator	STONE ENERGY CORPORATION	Slot	Slot #01
Area	Wetzel County, WV	Well	Conley 1H
Field	Wetzel	Wellbore	Conley 1H AWB
Facility	Conley Pad		

WELLPATH DATA (141 stations)																
MD [ft]	Inclination [°]	Azimuth [°]	TVD [ft]	Vert Sect [ft]	North [ft]	East [ft]	Grid East [US ft]	Grid North [US ft]	Latitude	Longitude	Closure Dist [ft]	Closure Dir [°]	DLS [°/100ft]	Build Rate [°/100ft]	Turn Rate [°/100ft]	
2874.00	6.930	257.320	2872.45	17.25	-2.07	-29.30	1636813.40	405603.98	39°36'23.272"N	80°47'20.610"W	29.38	265.965	1.30	1.09	-6.27	
2968.00	7.200	258.920	2965.74	22.70	-4.44	-40.62	1636802.09	405601.61	39°36'23.247"N	80°47'20.754"W	40.86	263.756	0.36	0.29	1.70	
3062.00	7.710	266.420	3058.95	29.30	-5.97	-52.69	1636790.01	405600.08	39°36'23.230"N	80°47'20.908"W	53.03	263.536	1.17	0.54	7.98	
3156.00	6.590	264.060	3152.22	36.06	-6.92	-64.35	1636778.35	405599.13	39°36'23.219"N	80°47'21.057"W	64.72	263.861	1.23	-1.19	-2.51	
3251.00	7.020	259.810	3246.55	42.00	-8.51	-75.49	1636767.22	405597.54	39°36'23.202"N	80°47'21.199"W	75.96	263.566	0.70	0.45	-4.47	
3346.00	7.490	262.970	3340.79	48.26	-10.30	-87.34	1636755.36	405595.75	39°36'23.183"N	80°47'21.350"W	87.95	263.276	0.65	0.49	3.33	
3441.00	6.990	258.970	3435.03	54.42	-12.16	-99.16	1636743.54	405593.89	39°36'23.163"N	80°47'21.501"W	99.91	263.008	0.75	-0.53	-4.21	
3535.00	7.540	265.290	3528.28	60.76	-13.76	-110.92	1636731.78	405592.29	39°36'23.145"N	80°47'21.651"W	111.78	262.927	1.03	0.59	6.72	
3629.00	6.770	265.110	3621.54	67.51	-14.74	-122.59	1636720.12	405591.31	39°36'23.134"N	80°47'21.800"W	123.47	263.143	0.82	-0.82	-0.19	
3723.00	5.700	262.240	3714.99	73.19	-15.84	-132.74	1636709.97	405590.21	39°36'23.122"N	80°47'21.929"W	133.68	263.193	1.19	-1.14	-3.05	
3817.00	5.900	261.660	3808.51	78.21	-17.17	-142.14	1636700.57	405588.88	39°36'23.107"N	80°47'22.049"W	143.18	263.110	0.22	0.21	-0.62	
3911.00	6.870	259.200	3901.92	83.49	-18.93	-152.45	1636690.26	405587.12	39°36'23.088"N	80°47'22.180"W	153.62	262.922	1.07	1.03	-2.62	
4005.00	6.110	253.530	3995.32	88.23	-21.40	-162.77	1636679.94	405584.65	39°36'23.062"N	80°47'22.312"W	164.17	262.510	1.06	-0.81	-6.03	
4099.00	6.190	257.030	4088.78	92.53	-23.96	-172.50	1636670.21	405582.09	39°36'23.036"N	80°47'22.435"W	174.16	262.093	0.41	0.09	3.72	
4193.00	6.210	263.290	4182.23	97.62	-25.69	-182.49	1636660.22	405580.36	39°36'23.017"N	80°47'22.563"W	184.29	261.987	0.72	0.02	6.66	
4287.00	5.830	260.820	4275.71	102.86	-27.04	-192.25	1636650.46	405579.01	39°36'23.002"N	80°47'22.687"W	194.14	261.993	0.49	-0.40	-2.63	
4381.00	6.530	267.300	4369.17	108.55	-28.06	-202.30	1636640.41	405577.99	39°36'22.991"N	80°47'22.815"W	204.24	262.104	1.05	0.74	6.89	
4475.00	7.950	265.640	4462.41	115.57	-28.80	-214.13	1636628.59	405577.25	39°36'22.982"N	80°47'22.966"W	216.05	262.339	1.53	1.51	-1.77	
4569.00	7.980	259.200	4555.51	122.54	-30.52	-227.02	1636615.70	405575.53	39°36'22.963"N	80°47'23.131"W	229.06	262.343	0.95	0.03	-6.85	
4663.00	8.640	261.950	4648.52	129.46	-32.73	-240.42	1636602.30	405573.32	39°36'22.939"N	80°47'23.301"W	242.64	262.247	0.82	0.70	2.93	
4760.00	7.260	260.290	4744.59	136.41	-34.79	-253.67	1636589.04	405571.27	39°36'22.917"N	80°47'23.470"W	256.05	262.192	1.44	-1.42	-1.71	
4854.00	6.980	266.140	4837.86	142.78	-36.17	-265.23	1636577.49	405569.88	39°36'22.902"N	80°47'23.618"W	267.68	262.234	0.83	-0.30	6.22	
4948.00	8.700	268.730	4930.98	150.59	-36.71	-278.03	1636564.68	405569.34	39°36'22.895"N	80°47'23.781"W	280.45	262.478	1.87	1.83	2.76	
5042.00	9.790	268.860	5023.76	160.05	-37.03	-293.13	1636549.59	405569.02	39°36'22.889"N	80°47'23.974"W	295.46	262.800	1.16	1.16	0.14	
5136.00	8.990	265.820	5116.50	169.37	-37.72	-308.45	1636534.27	405568.33	39°36'22.880"N	80°47'24.170"W	310.75	263.027	1.00	-0.85	-3.23	
5230.00	7.900	263.930	5209.48	177.27	-38.94	-322.20	1636520.52	405567.11	39°36'22.866"N	80°47'24.345"W	324.54	263.108	1.20	-1.16	-2.01	
5324.00	7.540	264.220	5302.63	184.35	-40.25	-334.76	1636507.96	405565.80	39°36'22.852"N	80°47'24.505"W	337.17	263.144	0.39	-0.36	0.31	
5450.00	6.420	260.370	5427.69	192.56	-42.26	-349.93	1636492.80	405563.79	39°36'22.830"N	80°47'24.699"W	352.47	263.114	0.96	-0.89	-3.06	
5526.00	6.260	261.130	5503.23	196.85	-43.61	-358.21	1636484.51	405562.44	39°36'22.815"N	80°47'24.804"W	360.85	263.059	0.24	-0.21	1.00	
5590.00	7.250	262.800	5566.78	200.84	-44.65	-365.66	1636477.06	405561.40	39°36'22.804"N	80°47'24.899"W	368.38	263.038	1.58	1.55	2.61	



Actual Wellpath Report

Conley 1H AWP Proj: 13157'

Page 4 of 8



REFERENCE WELLPATH IDENTIFICATION

Operator	STONE ENERGY CORPORATION	Slot	Slot #01
Area	Wetzel County, WV	Well	Conley 1H
Field	Wetzel	Wellbore	Conley 1H AWB
Facility	Conley Pad		

WELLPATH DATA (141 stations)

MD [ft]	Inclination [°]	Azimuth [°]	TVD [ft]	Vert Sect [ft]	North [ft]	East [ft]	Grid East [US ft]	Grid North [US ft]	Latitude	Longitude	Closure Dist [ft]	Closure Dir [°]	DLS [°/100ft]	Build Rate [°/100ft]	Turn Rate [°/100ft]
5685.00	12.300	266.140	5660.37	210.06	-46.09	-381.72	1636461.01	405559.97	39°36'22.787"N	80°47'25.104"W	384.49	263.116	5.35	5.32	3.52
5780.00	17.140	263.850	5752.23	223.83	-48.27	-405.75	1636436.98	405557.78	39°36'22.762"N	80°47'25.411"W	408.61	263.216	5.13	5.09	-2.41
5875.00	22.540	261.050	5841.56	241.03	-52.60	-437.67	1636405.05	405553.45	39°36'22.715"N	80°47'25.818"W	440.82	263.147	5.77	5.68	-2.95
5970.00	28.790	262.150	5927.14	262.62	-58.57	-478.36	1636364.37	405547.49	39°36'22.650"N	80°47'26.336"W	481.94	263.020	6.60	6.58	1.16
6065.00	35.300	264.720	6007.63	290.46	-64.22	-528.41	1636314.32	405541.83	39°36'22.587"N	80°47'26.975"W	532.30	263.070	7.00	6.85	2.71
6159.00	41.720	265.860	6081.15	324.29	-68.99	-586.72	1636256.02	405537.07	39°36'22.532"N	80°47'27.719"W	590.76	263.294	6.87	6.83	1.21
6254.00	49.150	266.290	6147.76	364.13	-73.60	-654.19	1636188.55	405532.46	39°36'22.477"N	80°47'28.580"W	658.32	263.581	7.83	7.82	0.45
6350.00	53.410	263.940	6207.80	407.16	-80.02	-728.79	1636113.95	405526.03	39°36'22.403"N	80°47'29.532"W	733.17	263.734	4.83	4.44	-2.45
6445.00	59.440	260.740	6260.33	449.41	-90.64	-807.17	1636035.58	405515.41	39°36'22.287"N	80°47'30.531"W	812.25	263.593	6.94	6.35	-3.37
6540.00	65.030	260.340	6304.57	492.10	-104.46	-890.06	1635952.70	405501.60	39°36'22.138"N	80°47'31.587"W	896.17	263.306	5.90	5.88	-0.42
6635.00	67.980	261.750	6342.44	537.03	-118.01	-976.11	1635866.65	405488.05	39°36'21.992"N	80°47'32.684"W	983.22	263.107	3.39	3.11	1.48
6730.00	67.880	261.110	6378.13	582.94	-131.13	-1063.16	1635779.60	405474.93	39°36'21.850"N	80°47'33.794"W	1071.22	262.969	0.63	-0.11	-0.67
6825.00	69.040	268.550	6413.05	633.38	-139.06	-1151.09	1635691.68	405467.00	39°36'21.759"N	80°47'34.916"W	1159.46	263.112	7.39	1.22	7.83
6921.00	70.910	275.520	6445.96	693.75	-135.83	-1241.16	1635601.62	405470.23	39°36'21.778"N	80°47'36.067"W	1248.57	263.755	7.09	1.95	7.26
7016.00	73.040	279.710	6475.37	760.47	-123.84	-1330.67	1635512.11	405482.22	39°36'21.884"N	80°47'37.213"W	1336.42	264.683	4.76	2.24	4.41
7111.00	76.300	286.770	6500.51	833.83	-102.83	-1419.76	1635423.02	405503.23	39°36'22.079"N	80°47'38.355"W	1423.48	265.857	7.94	3.43	7.43
7206.00	79.950	293.410	6520.08	914.37	-70.89	-1506.99	1635335.80	405535.17	39°36'22.382"N	80°47'39.475"W	1508.66	267.307	7.84	3.84	6.99
7300.00	81.410	298.060	6535.31	998.92	-30.62	-1590.52	1635252.27	405575.44	39°36'22.768"N	80°47'40.549"W	1590.82	268.897	5.12	1.55	4.95
7395.00	83.930	306.640	6547.45	1088.62	19.77	-1670.03	1635172.77	405625.82	39°36'23.255"N	80°47'41.574"W	1670.15	270.678	9.34	2.65	9.03
7489.00	87.350	317.030	6554.61	1181.25	82.20	-1739.74	1635103.06	405688.25	39°36'23.862"N	80°47'42.476"W	1741.68	272.705	11.60	3.64	11.05
7584.00	89.510	320.450	6557.22	1276.18	153.57	-1802.36	1635040.45	405759.61	39°36'24.558"N	80°47'43.289"W	1808.89	274.870	4.26	2.27	3.60
7679.00	89.820	321.550	6557.77	1371.16	227.40	-1862.14	1634980.67	405833.44	39°36'25.279"N	80°47'44.067"W	1875.97	276.962	1.20	0.33	1.16
7774.00	90.430	320.020	6557.56	1466.15	301.00	-1922.20	1634920.62	405907.03	39°36'25.998"N	80°47'44.848"W	1945.62	278.900	1.73	0.64	-1.61
7869.00	90.520	322.670	6556.78	1561.11	375.18	-1981.53	1634861.29	405981.21	39°36'26.723"N	80°47'45.619"W	2016.74	280.721	2.79	0.09	2.79
7964.00	91.350	332.240	6555.22	1655.18	455.16	-2032.57	1634810.25	406061.18	39°36'27.506"N	80°47'46.286"W	2082.91	282.622	10.11	0.87	10.07
8059.00	92.000	328.490	6552.45	1748.57	537.68	-2079.52	1634763.31	406143.70	39°36'28.315"N	80°47'46.901"W	2147.90	284.497	4.00	0.68	-3.95
8154.00	94.160	320.810	6547.33	1843.05	614.99	-2134.35	1634708.48	406221.01	39°36'29.071"N	80°47'47.616"W	2221.19	286.074	8.39	2.27	-8.06
8248.00	91.200	314.180	6542.93	1936.79	684.17	-2197.76	1634645.08	406290.17	39°36'29.745"N	80°47'48.439"W	2301.79	287.291	7.72	-3.15	-7.05
8343.00	90.250	313.450	6541.73	2031.23	749.93	-2266.30	1634576.54	406355.93	39°36'30.385"N	80°47'49.326"W	2387.16	288.310	1.26	-1.00	-0.77
8438.00	89.540	315.430	6541.91	2125.78	816.44	-2334.12	1634508.72	406422.44	39°36'31.033"N	80°47'50.205"W	2472.80	289.279	2.21	-0.75	2.08



Actual Wellpath Report

Conley 1H AWP Proj: 13157'
Page 5 of 8



REFERENCE WELLPATH IDENTIFICATION			
Operator	STONE ENERGY CORPORATION	Slot	Slot #01
Area	Wetzel County, WV	Well	Conley 1H
Field	Wetzel	Wellbore	Conley 1H AWB
Facility	Conley Pad		

WELLPATH DATA (141 stations)																
MD [ft]	Inclination [°]	Azimuth [°]	TVD [ft]	Vert Sect [ft]	North [ft]	East [ft]	Grid East [US ft]	Grid North [US ft]	Latitude	Longitude	Closure Dist [ft]	Closure Dir [°]	DLS [°/100ft]	Build Rate [°/100ft]	Turn Rate [°/100ft]	
8532.00	89.660	320.390	6542.56	2219.68	886.18	-2397.11	1634445.74	406492.17	39°36'31.713"N	80°47'51.023"W	2555.67	290.289	5.28	0.13	5.28	
8627.00	90.740	322.990	6542.23	2314.63	960.71	-2456.00	1634386.85	406566.70	39°36'32.441"N	80°47'51.789"W	2637.21	291.364	2.96	1.14	2.74	
8722.00	91.200	319.600	6540.62	2409.58	1034.83	-2515.38	1634327.47	406640.81	39°36'33.165"N	80°47'52.561"W	2719.93	292.362	3.60	0.48	-3.57	
8817.00	91.690	315.440	6538.23	2504.44	1104.85	-2579.51	1634263.35	406710.83	39°36'33.848"N	80°47'53.393"W	2806.16	293.186	4.41	0.52	-4.38	
8912.00	90.650	315.510	6536.29	2599.12	1172.57	-2646.11	1634196.75	406778.54	39°36'34.508"N	80°47'54.256"W	2894.27	293.900	1.10	-1.09	0.07	
9007.00	91.200	320.140	6534.75	2694.02	1242.94	-2709.86	1634133.00	406848.92	39°36'35.194"N	80°47'55.084"W	2981.32	294.640	4.91	0.58	4.87	
9101.00	91.850	322.820	6532.25	2787.94	1316.45	-2768.38	1634074.49	406922.42	39°36'35.912"N	80°47'55.845"W	3065.45	295.433	2.93	0.69	2.85	
9196.00	92.000	319.710	6529.06	2882.85	1390.51	-2827.78	1634015.09	406996.47	39°36'36.636"N	80°47'56.618"W	3151.17	296.185	3.28	0.16	-3.27	
9291.00	92.150	316.020	6525.62	2977.71	1460.90	-2891.46	1633951.41	407066.86	39°36'37.322"N	80°47'57.444"W	3239.56	296.805	3.88	0.16	-3.88	
9386.00	90.890	314.700	6523.10	3072.36	1528.47	-2958.19	1633884.69	407134.42	39°36'37.980"N	80°47'58.309"W	3329.73	297.325	1.92	-1.33	-1.39	
9481.00	91.260	317.640	6521.31	3167.12	1596.98	-3023.96	1633818.93	407202.93	39°36'38.648"N	80°47'59.162"W	3419.75	297.839	3.12	0.39	3.09	
9576.00	91.290	320.290	6519.20	3262.07	1668.61	-3086.31	1633756.58	407274.56	39°36'39.347"N	80°47'59.972"W	3508.50	298.398	2.79	0.03	2.79	
9670.00	91.540	322.720	6516.88	3356.00	1742.16	-3144.80	1633698.10	407348.10	39°36'40.065"N	80°48'00.733"W	3595.11	298.986	2.60	0.27	2.59	
9765.00	91.080	320.280	6514.71	3450.94	1816.48	-3203.91	1633638.98	407422.42	39°36'40.791"N	80°48'01.502"W	3683.02	299.551	2.61	-0.48	-2.57	
9859.00	90.580	318.380	6513.34	3544.92	1887.76	-3265.16	1633577.73	407493.70	39°36'41.487"N	80°48'02.298"W	3771.60	300.034	2.09	-0.53	-2.02	
9954.00	90.460	320.320	6512.48	3639.90	1959.83	-3327.05	1633515.86	407565.76	39°36'42.190"N	80°48'03.101"W	3861.37	300.501	2.05	-0.13	2.04	
10049.00	90.550	321.250	6511.64	3734.89	2033.44	-3387.10	1633455.80	407639.36	39°36'42.909"N	80°48'03.882"W	3950.61	300.978	0.98	0.09	0.98	
10144.00	90.090	320.010	6511.11	3829.88	2106.87	-3447.36	1633395.55	407712.79	39°36'43.626"N	80°48'04.666"W	4040.20	301.431	1.39	-0.48	-1.31	
10238.00	89.970	319.800	6511.06	3923.88	2178.78	-3507.90	1633335.01	407784.70	39°36'44.328"N	80°48'05.453"W	4129.47	301.845	0.26	-0.13	-0.22	
10333.00	90.120	321.530	6510.99	4018.87	2252.26	-3568.12	1633274.80	407858.17	39°36'45.046"N	80°48'06.236"W	4219.49	302.261	1.83	0.16	1.82	
10428.00	90.710	321.260	6510.30	4113.84	2326.49	-3627.39	1633215.53	407932.40	39°36'45.771"N	80°48'07.007"W	4309.36	302.675	0.68	0.62	-0.28	
10523.00	90.580	322.560	6509.23	4208.78	2401.26	-3685.99	1633156.93	408007.16	39°36'46.501"N	80°48'07.769"W	4399.16	303.082	1.38	-0.14	1.37	
10617.00	90.890	323.100	6508.03	4302.66	2476.15	-3742.78	1633100.15	408082.05	39°36'47.233"N	80°48'08.508"W	4487.73	303.488	0.66	0.33	0.57	
10713.00	90.950	323.070	6506.48	4398.50	2552.90	-3800.43	1633042.50	408158.79	39°36'47.983"N	80°48'09.259"W	4578.27	303.891	0.07	0.06	-0.03	
10807.00	91.350	322.700	6504.60	4492.37	2627.84	-3857.14	1632985.79	408233.73	39°36'48.716"N	80°48'09.998"W	4667.24	304.266	0.58	0.43	-0.39	
10902.00	91.140	321.100	6502.53	4587.29	2702.58	-3915.75	1632927.19	408308.46	39°36'49.446"N	80°48'10.760"W	4757.84	304.613	1.70	-0.22	-1.66	
10997.00	91.200	319.750	6500.59	4682.26	2775.79	-3976.25	1632866.69	408381.67	39°36'50.161"N	80°48'11.547"W	4849.29	304.919	1.42	0.06	-1.42	
11092.00	91.200	318.630	6498.60	4777.23	2847.67	-4038.33	1632804.62	408453.55	39°36'50.862"N	80°48'12.353"W	4941.39	305.190	1.18	0.00	-1.18	
11188.00	91.140	317.220	6496.64	4873.15	2918.92	-4102.64	1632740.31	408524.79	39°36'51.557"N	80°48'13.188"W	5035.05	305.431	1.47	-0.06	-1.47	
11282.00	90.860	316.930	6495.00	4967.01	2987.74	-4166.65	1632676.30	408593.60	39°36'52.228"N	80°48'14.019"W	5127.14	305.643	0.43	-0.30	-0.31	



Actual Wellpath Report

Conley 1H AWP Proj: 13157'

Page 6 of 8



REFERENCE WELLPATH IDENTIFICATION

Operator	STONE ENERGY CORPORATION	Slot	Slot #01
Area	Wetzel County, WV	Well	Conley 1H
Field	Wetzel	Wellbore	Conley 1H AWB
Facility	Conley Pad		

WELLPATH DATA (141 stations)

MD [ft]	Inclination [°]	Azimuth [°]	TVD [ft]	Vert Sect [ft]	North [ft]	East [ft]	Grid East [US ft]	Grid North [US ft]	Latitude	Longitude	Closure Dist [ft]	Closure Dir [°]	DLS [°/100ft]	Build Rate [°/100ft]	Turn Rate [°/100ft]
11376.00	91.050	317.790	6493.44	5060.90	3056.87	-4230.32	1632612.64	408662.74	39°36'52.902"N	80°48'14.845"W	5219.20	305.852	0.94	0.20	0.91
11471.00	91.350	315.920	6491.45	5155.73	3126.17	-4295.26	1632547.70	408732.03	39°36'53.577"N	80°48'15.688"W	5312.46	306.048	1.99	0.32	-1.97
11566.00	90.430	314.050	6489.97	5250.35	3193.32	-4362.44	1632480.52	408799.17	39°36'54.231"N	80°48'16.558"W	5406.31	306.204	2.19	-0.97	-1.97
11661.00	90.180	317.220	6489.47	5345.06	3261.22	-4428.86	1632414.11	408867.07	39°36'54.893"N	80°48'17.420"W	5500.04	306.366	3.35	-0.26	3.34
11756.00	90.460	320.910	6488.94	5440.03	3332.98	-4491.09	1632351.88	408938.82	39°36'55.593"N	80°48'18.228"W	5592.73	306.580	3.90	0.29	3.88
11851.00	90.220	322.960	6488.37	5534.97	3407.77	-4549.66	1632293.32	409013.61	39°36'56.324"N	80°48'18.990"W	5684.39	306.834	2.17	-0.25	2.16
11945.00	90.250	326.590	6487.99	5628.62	3484.54	-4603.87	1632239.11	409090.38	39°36'57.075"N	80°48'19.697"W	5773.88	307.121	3.86	0.03	3.86
12040.00	90.860	330.940	6487.06	5722.49	3565.75	-4653.12	1632189.87	409171.58	39°36'57.870"N	80°48'20.341"W	5862.26	307.463	4.62	0.64	4.58
12134.00	93.420	327.780	6483.55	5815.15	3646.55	-4700.98	1632142.01	409252.38	39°36'58.662"N	80°48'20.968"W	5949.50	307.801	4.32	2.72	-3.36
12229.00	95.790	323.570	6475.92	5909.35	3724.73	-4754.36	1632088.63	409330.55	39°36'59.427"N	80°48'21.664"W	6039.66	308.076	5.07	2.49	-4.43
12324.00	90.370	316.060	6470.81	6004.11	3797.12	-4815.51	1632027.48	409402.93	39°37'00.133"N	80°48'22.459"W	6132.47	308.256	9.74	-5.71	-7.91
12419.00	89.720	315.350	6470.74	6098.84	3865.11	-4881.86	1631961.14	409470.92	39°37'00.796"N	80°48'23.320"W	6226.68	308.370	1.01	-0.68	-0.75
12514.00	88.920	314.950	6471.87	6193.49	3932.46	-4948.85	1631894.15	409538.27	39°37'01.451"N	80°48'24.188"W	6321.02	308.471	0.94	-0.84	-0.42
12608.00	88.830	316.900	6473.71	6287.23	3999.97	-5014.22	1631828.79	409605.78	39°37'02.109"N	80°48'25.036"W	6414.22	308.580	2.08	-0.10	2.07
12703.00	88.680	320.130	6475.78	6382.17	4071.11	-5077.13	1631765.88	409676.91	39°37'02.803"N	80°48'25.853"W	6507.78	308.725	3.40	-0.16	3.40
12798.00	89.080	323.020	6477.64	6477.10	4145.52	-5136.15	1631706.86	409751.31	39°37'03.530"N	80°48'26.621"W	6600.40	308.908	3.07	0.42	3.04
12893.00	90.000	319.910	6478.40	6572.06	4219.82	-5195.32	1631647.69	409825.61	39°37'04.256"N	80°48'27.391"W	6693.15	309.085	3.41	0.97	-3.27
12988.00	89.940	318.830	6478.45	6667.05	4291.91	-5257.19	1631585.84	409897.70	39°37'04.959"N	80°48'28.194"W	6786.64	309.228	1.14	-0.06	-1.14
13082.00	90.030	316.850	6478.47	6760.98	4361.59	-5320.28	1631522.75	409967.37	39°37'05.639"N	80°48'29.014"W	6879.59	309.345	2.11	0.10	-2.11
13132.00	89.850	316.870	6478.52	6810.90	4398.07	-5354.46	1631488.56	410003.85	39°37'05.994"N	80°48'29.457"W	6929.17	309.399	0.36	-0.36	0.04
13157.00	89.850	316.870	6478.59	6835.87	4416.32	-5371.56	1631471.47	410022.10	39°37'06.172"N	80°48'29.679"W	6953.95	309.426	0.00	0.00	0.00



Actual Wellpath Report

Conley 1H AWP Proj: 13157'

Page 7 of 8



REFERENCE WELLPATH IDENTIFICATION

Operator	STONE ENERGY CORPORATION	Slot	Slot #01
Area	Wetzel County, WV	Well	Conley 1H
Field	Wetzel	Wellbore	Conley 1H AWB
Facility	Conley Pad		

HOLE & CASING SECTIONS - Ref Wellbore: Conley 1H AWB Ref Wellpath: Conley 1H AWP Proj: 13157'

String/Diameter	Start MD [ft]	End MD [ft]	Interval [ft]	Start TVD [ft]	End TVD [ft]	Start N/S [ft]	Start E/W [ft]	End N/S [ft]	End E/W [ft]
20in Conductor	23.00	103.00	80.00	23.00	103.00	0.00	0.00	0.11	0.06
17.5in Open Hole	103.00	866.00	763.00	103.00	866.00	0.11	0.06	1.58	1.66
13.375in Casing Surface	23.00	866.00	843.00	23.00	866.00	0.00	0.00	1.58	1.66
12.25in Open Hole	866.00	2202.00	1336.00	866.00	2201.99	1.58	1.66	4.15	5.78
9.625in Casing Intermediate	23.00	2202.00	2179.00	23.00	2201.99	0.00	0.00	4.15	5.78

TARGETS

Name	TVD [ft]	North [ft]	East [ft]	Grid East [US ft]	Grid North [US ft]	Latitude	Longitude	Shape
Conley 1H BHL Rev-1	6445.27	4415.22	-5372.03	1631471.00	410021.00	39°37'06.161"N	80°48'29.685"W	point
Conley 1H LP Rev-1	6543.00	125.77	-1772.76	1635070.05	405731.81	39°36'24.288"N	80°47'42.906"W	point

WELLPATH COMPOSITION - Ref Wellbore: Conley 1H AWB Ref Wellpath: Conley 1H AWP Proj: 13157'

Start MD [ft]	End MD [ft]	Positional Uncertainty Model	Log Name/Comment	Wellbore
23.00	2113.00	BHI Generic gyro - northseeking (Standard)	01_Gyro <12-1/4"> (100'-2100')	Conley 1H AWB
2113.00	5450.00	ISCWSA MWD, Rev. 3 (Standard)	02_MWD Survey <8-7/8"> (2100')(2190'-5437')	Conley 1H AWB
5450.00	13132.00	BHI AutoTrak Curve (Short)	03_BHI AT Curve <8-3/4"> (5450')(5526'-13132')	Conley 1H AWB
13132.00	13157.00	Blind Drilling (std)	Projection to bit	Conley 1H AWB



Actual Wellpath Report

Conley 1H AWP Proj: 13157'

Page 8 of 8



REFERENCE WELLPATH IDENTIFICATION

Operator	STONE ENERGY CORPORATION	Slot	Slot #01
Area	Wetzel County, WV	Well	Conley 1H
Field	Wetzel	Wellbore	Conley 1H AWB
Facility	Conley Pad		

COMMENTS

Wellpath general comments

API: 47-103-02945-0000

BHI Job #: 8154108

Rig: Nomac 79

Duration: 9/15/2016-9/18/2016

Gyro <12-1/4"> (100'-2100')

MWD Survey <8-7/8"> (2100')(2190'-5437')

BHI AT Curve <8-3/4"> (5450')(5526'-13132')

Projected MD at TD: 13157'