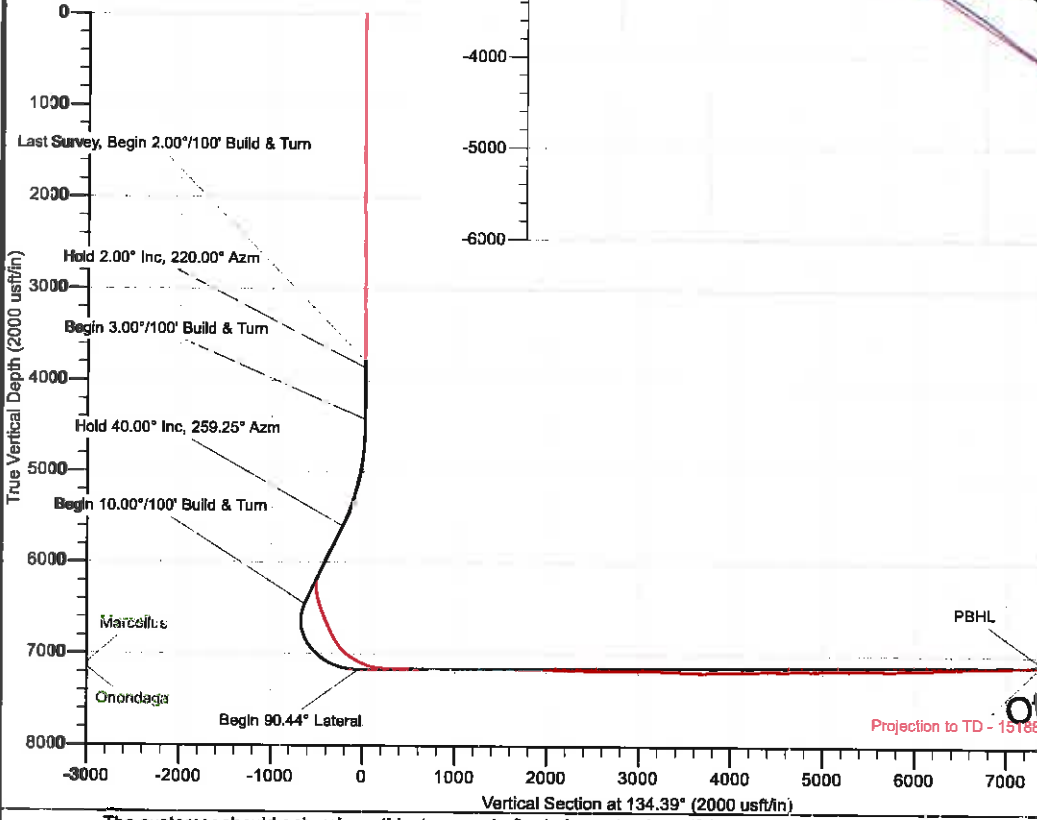
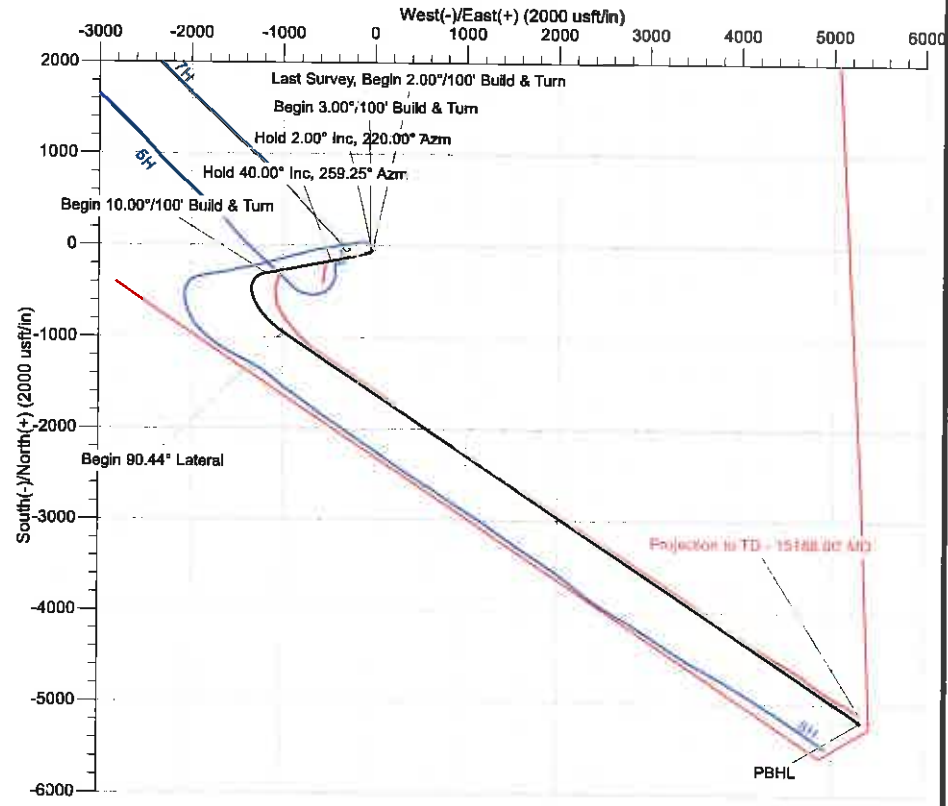


ANNOTATIONS									
MD	Inc	Azi	TVD	+N/-S	+E/-W	V Sect	Departure	Annotation	
3764.00	0.50	205.00	3782.47	-53.75	-27.14	18.20	0.00	Last Survey, Begin 2.00°/100' Build & Turn	
3860.13	2.00	220.00	3858.58	-55.07	-28.14	18.41	1.66	Hold 2.00° Inc, 220.00° Azm	
4424.00	2.00	220.00	4422.11	-70.14	-40.79	19.82	21.33	Begin 3.00°/100' Build & Turn	
5706.17	40.00	259.25	5598.45	-167.86	-476.48	-223.07	468.80	Hold 40.00° Inc, 259.25° Azm	
6824.81	40.00	259.25	6455.41	-302.00	-1182.85	-634.00	1187.59	Begin 10.00°/100' Build & Turn	
8000.22	90.44	124.00	7172.00	-943.72	-896.17	-51.69	2041.58	Begin 90.44° Lateral	
15600.22	90.44	124.00	7113.00	-5193.45	5304.33	7423.47	9641.35	PBHL	

US State Plane 1983  
West Virginia Northern Zone  
Created By: HLH  
Date: 15:54, July 14 2014  
Plan: Design #3



RECEIVED  
Office of Oil and Gas

JUN 10 2015

West Virginia Department of Environmental Protection

The customer should only rely on this document after independently verifying all paths, targets, coordinates, lease and hard copy representations. Any decisions made or wells drilled utilizing this or any other information supplied by MS Energy are at the sole risk and responsibility of the customer. MS Energy is not responsible for the accuracy of this schematic or the information contained herein.



**Trans Energy, Inc.**  
Oil and Gas Exploration and Development

**Trans Energy Inc.**

Wetzel County, West Virginia (NAD 83)  
Anderson  
9H

Wellbore #1

Survey: MS MWD

**Standard Survey Report**

14 July, 2014



**Energy Services**  
[WWW.MSENERGYSERVICES.COM](http://WWW.MSENERGYSERVICES.COM)

RECEIVED  
Office of Oil and Gas  
JUL 22 2015  
WV Department of  
Environmental Protection

<b>Company:</b>	Trans Energy Inc.	<b>Local Co-ordinate Reference:</b>	Well 9H
<b>Project:</b>	Wetzel County, West Virginia (NAD 83)	<b>TVD Reference:</b>	WELL @ 1032.00usft (H&P 285)
<b>Site:</b>	Anderson	<b>MD Reference:</b>	WELL @ 1032.00usft (H&P 285)
<b>Well:</b>	9H	<b>North Reference:</b>	Grd
<b>Wellbore:</b>	Wellbore #1	<b>Survey Calculation Method:</b>	Minimum Curvature
<b>Design:</b>	Surveys	<b>Database:</b>	EDM 5000.1 Conroe DB

<b>Project</b>	Wetzel County, West Virginia (NAD 83)		
<b>Map System:</b>	US State Plane 1983	<b>System Datum:</b>	Mean Sea Level
<b>Geo Datum:</b>	North American Datum 1983		
<b>Map Zone:</b>	West Virginia Northern Zone		

<b>Well</b>	9H					
<b>Well Position</b>	<b>+N/-S</b>	0.00 usft	<b>Northing:</b>	350,663.97 usft	<b>Latitude:</b>	39° 27' 26.791 N
	<b>+E/-W</b>	0.00 usft	<b>Easting:</b>	1,655,019.39 usft	<b>Longitude:</b>	80° 36' 36.990 W
<b>Position Uncertainty</b>		0.00 usft	<b>Wellhead Elevation:</b>	usft	<b>Ground Level:</b>	1,012.00 usft

<b>Wellbore</b>	Wellbore #1				
<b>Magnetics</b>	<b>Model Name</b>	<b>Sample Date</b>	<b>Declination (°)</b>	<b>Dip Angle (°)</b>	<b>Field Strength (nT)</b>
	WMM_2010	5/1/2014	-8.63	66.93	52,372

<b>Design</b>	Surveys				
<b>Audit Notes:</b>					
<b>Version:</b>	1.0	<b>Phase:</b>	ACTUAL	<b>Tie On Depth:</b>	0.00
<b>Vertical Section:</b>	<b>Depth From (TVD) (usft)</b>	<b>+N/-S (usft)</b>	<b>+E/-W (usft)</b>	<b>Direction (°)</b>	
	0.00	0.00	0.00	134.39	

<b>Survey Program</b>	Date 7/14/2014				
<b>From (usft)</b>	<b>To (usft)</b>	<b>Survey (Wellbore)</b>	<b>Tool Name</b>	<b>Description</b>	
1,055.00	15,188.00	MS MWD (Wellbore #1)	MWD	MWD - Standard	

Measured Depth (usft)	Inclination (°)	Azimuth (°)	Vertical Depth (usft)	+N/-S (usft)	+E/-W (usft)	Vertical Section (usft)	Dogleg Rate (°/100usft)	Build Rate (°/100usft)	Turn Rate (°/100usft)
0.00	0.00	0.00	0.00	0.00	0.00	0.00	0.00	0.00	0.00
1,055.00	0.20	66.70	1,055.00	0.73	1.69	0.70	0.02	0.02	0.00
1,145.00	0.30	30.10	1,145.00	0.99	1.95	0.70	0.20	0.11	-40.67
1,235.00	0.70	82.80	1,234.99	1.27	2.62	0.98	0.63	0.44	58.56
1,326.00	0.50	81.10	1,325.99	1.40	3.56	1.57	0.22	-0.22	-1.87
1,421.00	0.70	89.50	1,420.98	1.47	4.55	2.23	0.23	0.21	8.84
1,515.00	0.90	80.80	1,514.97	1.59	5.85	3.07	0.25	0.21	-9.15
1,610.00	1.10	95.80	1,609.96	1.61	7.50	4.23	0.34	0.21	15.68
1,705.00	1.20	97.50	1,704.94	1.39	9.38	5.74	0.11	0.11	1.79
1,799.00	0.30	212.90	1,798.93	1.06	10.23	6.57	1.44	-0.96	122.77
1,894.00	0.60	227.10	1,893.93	0.51	9.73	6.60	0.33	0.32	14.90
1,989.00	0.80	215.40	1,988.92	-0.37	8.99	6.68	0.26	0.32	-12.32
2,083.00	1.40	208.20	2,082.91	-1.92	8.06	7.10	0.65	0.64	-7.66
2,178.00	1.60	223.80	2,177.87	-3.90	6.60	7.44	0.48	0.21	1.22
2,273.00	2.00	218.20	2,272.83	-6.16	4.65	7.63	0.46	0.21	-5.89

**RECEIVED**  
Office of Oil and Gas  
JUN 10 2014  
WV Department of Environmental Protection  
COMPASS 5/11/2014 85

<b>Company:</b>	Trans Energy Inc.	<b>Local Co-ordinate Reference:</b>	Well 9H
<b>Project:</b>	Wetzel County, West Virginia (NAD 83)	<b>TVD Reference:</b>	WELL @ 1032.00usft (H&P 285)
<b>Site:</b>	Anderson	<b>MD Reference:</b>	WELL @ 1032.00usft (H&P 285)
<b>Well:</b>	9H	<b>North Reference:</b>	Grid
<b>Wellbore:</b>	Wellbore #1	<b>Survey Calculation Method:</b>	Minimum Curvature
<b>Design:</b>	Surveys	<b>Database:</b>	EDM 5000.1 Conroe DB

Survey

Measured Depth (usft)	Inclination (°)	Azimuth (°)	Vertical Depth (usft)	+N/-S (usft)	+E/-W (usft)	Vertical Section (usft)	Dogleg Rate (°/100usft)	Build Rate (°/100usft)	Turn Rate (°/100usft)
2,367.00	1.70	219.50	2,366.78	-8.52	2.75	7.93	0.32	-0.32	1.38
2,462.00	1.70	208.60	2,461.74	-10.85	1.18	8.43	0.34	0.00	-11.47
2,556.00	1.50	205.90	2,555.70	-13.18	-0.02	9.20	0.23	-0.21	-2.87
2,651.00	2.90	221.30	2,650.63	-16.10	-2.15	9.72	1.59	1.47	16.21
2,746.00	3.40	224.60	2,745.48	-19.91	-5.72	9.84	0.56	0.53	3.47
2,841.00	3.60	217.30	2,840.31	-24.29	-9.50	10.20	0.51	0.21	-7.68
2,934.00	4.10	212.90	2,933.10	-29.40	-13.08	11.22	0.62	0.54	-4.73
3,029.00	3.70	211.50	3,027.88	-34.87	-16.52	12.58	0.43	-0.42	-1.47
3,123.00	2.80	212.20	3,121.73	-39.40	-19.33	13.75	0.96	-0.96	0.74
3,218.00	2.30	207.50	3,216.63	-43.05	-21.45	14.79	0.57	-0.53	-4.95
3,312.00	1.90	211.90	3,310.57	-46.05	-23.14	15.67	0.46	-0.43	4.68
3,407.00	1.50	216.40	3,405.53	-48.39	-24.71	16.19	0.44	-0.42	4.74
3,501.00	1.20	207.10	3,499.50	-50.25	-25.89	16.65	0.39	-0.32	-9.89
3,595.00	0.80	198.10	3,593.49	-51.75	-26.54	17.23	0.46	-0.43	-9.57
3,690.00	0.60	196.70	3,688.48	-52.86	-26.89	17.76	0.21	-0.21	-1.47
3,784.00	0.50	205.00	3,782.47	-53.70	-27.21	18.12	0.14	-0.11	8.83
3,879.00	0.40	213.10	3,877.47	-54.36	-27.56	18.33	0.12	-0.11	8.53
3,973.00	0.50	221.70	3,971.47	-54.94	-28.02	18.41	0.13	0.11	9.15
4,067.00	2.30	240.10	4,065.44	-56.18	-29.92	17.92	1.95	1.91	19.57
4,162.00	2.20	240.40	4,160.36	-58.03	-33.16	16.90	0.11	-0.11	0.32
4,256.00	1.80	240.10	4,254.31	-59.66	-36.01	16.00	0.43	-0.43	-0.32
4,350.00	3.10	247.10	4,348.22	-61.39	-39.63	14.62	1.42	1.38	7.45
4,445.00	5.10	236.90	4,442.97	-64.69	-45.54	12.71	2.23	2.11	-10.74
4,539.00	6.50	235.20	4,536.49	-70.01	-53.41	10.81	1.50	1.49	-1.81
4,633.00	7.40	243.40	4,629.80	-75.76	-63.19	7.84	1.42	0.96	8.72
4,728.00	8.10	246.30	4,723.93	-81.19	-74.79	3.35	0.84	0.74	3.05
4,822.00	10.90	262.20	4,816.65	-85.06	-89.66	-4.57	4.06	2.98	16.91
4,917.00	10.50	265.60	4,910.00	-86.94	-107.19	-15.78	0.79	-0.42	3.58
5,011.00	12.40	267.90	5,002.12	-87.97	-125.82	-28.37	2.08	2.02	2.45
5,105.00	18.50	265.30	5,092.68	-89.56	-150.79	-45.10	6.53	6.49	-2.77
5,200.00	22.50	255.70	5,181.68	-95.29	-183.45	-64.43	5.49	4.21	-10.11
5,294.00	28.40	250.20	5,266.53	-107.32	-221.95	-83.53	6.76	6.28	-5.85
5,388.00	35.30	253.80	5,346.33	-122.49	-269.13	-106.63	7.61	7.34	3.83
5,483.00	41.50	255.60	5,420.75	-137.99	-326.03	-136.45	6.63	6.53	1.89
5,577.00	42.30	256.80	5,490.72	-152.96	-386.99	-169.54	1.20	0.85	1.28
5,672.00	39.70	258.30	5,562.41	-166.41	-447.84	-203.61	2.93	-2.74	1.58
5,766.00	39.30	260.30	5,634.94	-177.52	-506.58	-237.82	1.42	-0.43	2.13
5,860.00	39.90	261.40	5,707.37	-187.04	-565.73	-273.43	0.98	0.11	1.17
5,955.00	40.00	262.40	5,780.20	-195.63	-626.13	-310.57	0.68	0.11	1.05
6,049.00	40.60	258.70	5,851.90	-205.62	-686.07	-346.42	2.62	0.04	-3.94
6,143.00	41.00	259.00	5,923.06	-217.50	-746.34	-381.18	0.47	0.43	0.32
6,238.00	39.60	257.80	5,995.51	-229.85	-806.52	-415.55	1.68	0.47	-1.26
6,332.00	39.70	257.20	6,067.89	-242.83	-865.08	-448.32	0.42	0.11	0.11
6,426.00	40.90	256.50	6,139.58	-256.66	-924.28	-480.94	1.36	0.25	-0.74

RECEIVED  
Office of Oil and Gas  
JUL 10 2015  
WV Department of  
Environmental Protection  
COMPASS 5000.1 Build 65

<b>Company:</b>	Trans Energy Inc.	<b>Local Co-ordinate Reference:</b>	Well 9H
<b>Project:</b>	Wetzel County, West Virginia (NAD 83)	<b>TVD Reference:</b>	WELL @ 1032.00usft (H&P 285)
<b>Site:</b>	Anderson	<b>MD Reference:</b>	WELL @ 1032.00usft (H&P 285)
<b>Well:</b>	9H	<b>North Reference:</b>	Grid
<b>Wellbore:</b>	Wellbore #1	<b>Survey Calculation Method:</b>	Minimum Curvature
<b>Design:</b>	Surveys	<b>Database:</b>	EDM 5000.1 Conroe DB

**Survey**

Measured Depth (usft)	Inclination (°)	Azimuth (°)	Vertical Depth (usft)	+N/-S (usft)	+E/-W (usft)	Vertical Section (usft)	Dogleg Rate (°/100usft)	Build Rate (°/100usft)	Turn Rate (°/100usft)
6,521.00	39.70	239.70	6,212.25	-279.30	-980.89	-505.56	11.48	-1.26	-17.68
6,615.00	35.30	221.10	6,287.05	-315.05	-1,024.83	-511.95	12.88	-4.68	-19.79
6,709.00	33.10	202.60	6,365.00	-359.34	-1,052.63	-500.83	11.27	-2.34	-19.68
6,741.00	32.50	200.00	6,391.90	-375.48	-1,058.93	-494.04	4.78	-1.88	-8.13
6,772.00	31.60	197.90	6,418.18	-391.04	-1,064.27	-486.98	4.62	-2.90	-6.77
6,804.00	31.40	194.60	6,445.46	-407.08	-1,068.95	-479.09	5.42	-0.63	-10.31
6,835.00	31.60	191.10	6,471.90	-422.87	-1,072.55	-470.62	5.93	0.65	-11.29
6,866.00	32.20	188.30	6,498.22	-439.01	-1,075.30	-461.30	5.15	1.94	-9.03
6,898.00	31.90	186.20	6,525.34	-455.86	-1,077.45	-451.05	3.61	-0.94	-6.56
6,929.00	30.90	185.90	6,551.80	-471.92	-1,079.15	-441.03	3.26	-3.23	-0.97
6,961.00	30.10	185.20	6,579.37	-488.08	-1,080.72	-430.85	2.74	-2.50	-2.19
6,992.00	29.30	183.90	6,606.30	-503.39	-1,081.94	-421.01	3.31	-2.58	-4.19
7,024.00	29.70	181.80	6,634.15	-519.13	-1,082.73	-410.56	3.46	1.25	-6.56
7,055.00	30.40	179.10	6,660.98	-534.65	-1,082.84	-399.79	4.91	2.26	-8.71
7,087.00	30.20	175.80	6,688.62	-550.77	-1,082.13	-388.00	5.24	-0.63	-10.31
7,118.00	30.60	173.40	6,715.35	-566.38	-1,080.65	-376.02	4.12	1.29	-7.74
7,149.00	31.10	170.70	6,741.97	-582.12	-1,078.45	-363.43	4.75	1.61	-8.71
7,181.00	31.30	167.90	6,769.34	-598.41	-1,075.37	-349.84	4.58	0.63	-8.75
7,212.00	31.40	164.20	6,795.82	-614.05	-1,071.48	-336.12	6.22	0.32	-11.94
7,244.00	31.30	161.40	6,823.15	-629.95	-1,066.56	-321.48	4.56	-0.31	-8.75
7,275.00	32.30	158.80	6,849.50	-645.31	-1,061.00	-306.76	5.47	3.23	-8.39
7,320.00	33.80	156.40	6,887.22	-667.99	-1,051.64	-284.21	4.42	3.33	-5.33
7,351.00	37.00	156.00	6,912.48	-684.42	-1,044.39	-267.54	10.35	10.32	-1.29
7,383.00	41.00	155.00	6,937.35	-702.74	-1,036.03	-248.75	12.65	12.50	-3.13
7,414.00	44.90	152.10	6,960.03	-721.63	-1,026.61	-228.80	14.10	12.58	-9.35
7,446.00	48.90	149.00	6,981.90	-741.96	-1,015.11	-206.37	14.36	12.50	-9.69
7,477.00	51.70	146.80	7,001.70	-762.15	-1,002.43	-183.18	10.55	9.03	-7.10
7,509.00	54.30	144.70	7,020.96	-783.27	-988.04	-158.12	9.67	8.13	-6.56
7,540.00	56.40	143.50	7,038.58	-803.92	-973.09	-132.99	7.49	6.77	-3.87
7,571.00	58.60	142.50	7,055.24	-824.80	-957.35	-107.14	7.60	7.10	-3.23
7,603.00	61.50	141.10	7,071.21	-846.58	-940.21	-79.65	9.82	9.06	-4.38
7,634.00	62.80	140.90	7,085.69	-867.88	-922.96	-52.42	4.23	4.19	-0.65
7,665.00	64.90	140.40	7,099.35	-889.40	-905.31	-24.76	6.93	6.77	-1.61
7,697.00	66.80	139.80	7,112.45	-911.80	-886.58	4.29	6.18	5.94	-1.88
7,728.00	71.30	138.50	7,123.53	-933.69	-867.65	33.13	15.03	14.52	-4.19
7,760.00	74.50	137.30	7,132.94	-956.38	-847.14	63.66	10.62	10.00	-3.75
7,791.00	76.20	136.10	7,140.78	-978.20	-826.58	93.62	6.64	5.48	-3.87
7,823.00	78.20	135.30	7,147.87	-1,000.53	-804.78	124.82	6.71	6.25	-2.50
7,854.00	82.00	135.40	7,153.19	-1,022.25	-783.32	155.35	12.26	12.26	0.32
7,886.00	85.20	134.40	7,156.76	-1,044.70	-760.80	187.14	10.47	10.00	-3.13
7,917.00	88.00	132.60	7,158.60	-1,066.00	-738.36	218.08	10.73	9.03	-5.81
7,980.00	90.90	130.40	7,159.20	-1,107.73	-691.18	280.99	5.78	4.60	-3.49
8,074.00	90.20	123.60	7,158.30	-1,164.27	-616.16	374.15	7.27	-0.74	-7.23

<b>Company:</b>	Trans Energy Inc.	<b>Local Co-ordinate Reference:</b>	Well 9H
<b>Project:</b>	Wetzel County, West Virginia (NAD 83)	<b>TVD Reference:</b>	WELL @ 1032.00usft (H&P 285)
<b>Site:</b>	Anderson	<b>MD Reference:</b>	WELL @ 1032.00usft (H&P 285)
<b>Well:</b>	9H	<b>North Reference:</b>	Grid
<b>Wellbore:</b>	Wellbore #1	<b>Survey Calculation Method:</b>	Minimum Curvature
<b>Design:</b>	Surveys	<b>Database:</b>	EDM 5000.1 Conroe DB

Survey

Measured Depth (usft)	Inclination (°)	Azimuth (°)	Vertical Depth (usft)	+N/-S (usft)	+E/-W (usft)	Vertical Section (usft)	Dogleg Rate (°/100usft)	Build Rate (°/100usft)	Turn Rate (°/100usft)
8,168.00	89.20	123.70	7,158.79	-1,216.35	-537.91	466.50	1.07	-1.06	0.11
8,262.00	88.40	124.00	7,160.76	-1,268.70	-459.86	558.89	0.91	-0.85	0.32
8,357.00	89.80	124.40	7,162.25	-1,322.09	-381.30	652.38	1.53	1.47	0.42
8,451.00	90.60	124.30	7,161.93	-1,375.13	-303.70	744.94	0.86	0.85	-0.11
8,545.00	90.90	123.80	7,160.70	-1,427.76	-225.82	837.40	0.62	0.32	-0.53
8,639.00	91.70	124.40	7,158.56	-1,480.44	-148.00	929.86	1.06	0.85	0.64
8,734.00	88.30	124.00	7,158.56	-1,533.83	-69.44	1,023.35	3.60	-3.58	-0.42
8,828.00	88.40	124.00	7,161.27	-1,586.37	8.46	1,115.77	0.11	0.11	0.00
8,922.00	89.80	125.30	7,162.75	-1,639.81	85.77	1,208.40	2.03	1.49	1.38
9,017.00	88.80	127.10	7,163.91	-1,695.91	162.42	1,302.42	2.17	-1.05	1.89
9,111.00	89.40	129.20	7,165.38	-1,753.97	236.33	1,395.85	2.32	0.64	2.23
9,205.00	90.10	129.50	7,165.79	-1,813.57	309.02	1,489.48	0.81	0.74	0.32
9,299.00	88.00	127.30	7,167.35	-1,871.94	382.67	1,582.94	3.24	-2.23	-2.34
9,394.00	88.40	124.30	7,170.34	-1,927.48	459.67	1,676.82	3.18	0.42	-3.16
9,488.00	89.20	124.80	7,172.31	-1,980.77	537.07	1,769.42	1.00	0.85	0.53
9,582.00	90.10	125.10	7,172.88	-2,034.62	614.12	1,862.14	1.01	0.96	0.32
9,676.00	89.50	121.10	7,173.21	-2,085.94	692.85	1,954.30	4.30	-0.64	-4.26
9,771.00	89.70	120.90	7,173.87	-2,134.87	774.28	2,046.72	0.30	0.21	-0.21
9,865.00	90.00	120.70	7,174.12	-2,183.00	855.02	2,138.09	0.38	0.32	-0.21
9,959.00	88.30	121.30	7,175.51	-2,231.41	935.53	2,229.52	1.92	-1.81	0.64
10,053.00	89.00	122.60	7,177.73	-2,281.14	1,015.31	2,321.28	1.57	0.74	1.38
10,147.00	88.60	122.50	7,179.69	-2,331.70	1,094.53	2,413.26	0.44	-0.43	-0.11
10,242.00	90.30	128.00	7,180.61	-2,386.50	1,172.08	2,507.01	6.06	1.79	5.79
10,336.00	89.70	126.10	7,180.61	-2,443.14	1,247.09	2,600.24	2.12	-0.64	-2.02
10,430.00	90.30	123.60	7,180.61	-2,496.85	1,324.23	2,692.93	2.74	0.64	-2.66
10,524.00	88.00	120.70	7,182.00	-2,546.85	1,403.79	2,784.77	3.94	-2.45	-3.09
10,618.00	90.80	125.50	7,182.99	-2,598.17	1,482.50	2,876.91	5.91	2.98	5.11
10,713.00	88.40	122.20	7,183.65	-2,651.07	1,561.38	2,970.28	4.29	-2.53	-3.47
10,807.00	90.40	123.00	7,184.63	-2,701.71	1,640.56	3,062.29	2.29	2.13	0.85
10,901.00	88.90	119.90	7,185.21	-2,750.75	1,720.74	3,153.88	3.66	-1.60	-3.30
10,996.00	90.80	123.60	7,185.46	-2,800.73	1,801.50	3,246.56	4.38	2.00	3.89
11,090.00	88.10	124.40	7,186.36	-2,853.28	1,879.42	3,339.01	3.00	-2.87	0.85
11,184.00	87.80	124.50	7,189.72	-2,906.42	1,956.89	3,431.54	0.34	-0.32	0.11
11,279.00	87.30	124.20	7,193.78	-2,959.98	2,035.25	3,525.00	0.61	-0.53	-0.32
11,373.00	86.60	125.10	7,198.78	-3,013.34	2,112.47	3,617.51	1.21	-0.74	0.96
11,467.00	90.90	124.30	7,200.83	-3,066.83	2,189.71	3,710.12	4.65	4.57	-0.85
11,561.00	92.60	123.20	7,197.96	-3,119.03	2,267.83	3,802.46	2.15	1.81	-1.17
11,656.00	92.00	122.90	7,194.15	-3,170.80	2,347.39	3,895.53	0.71	-0.63	0.32
11,750.00	91.60	123.40	7,191.20	-3,222.17	2,426.05	3,987.68	0.68	-0.43	0.32
11,844.00	91.50	123.00	7,188.66	-3,273.62	2,504.68	4,079.86	0.44	-0.43	0.32
11,938.00	91.30	122.30	7,186.36	-3,324.32	2,583.80	4,171.86	0.77	-0.21	-0.74
12,032.00	90.90	123.40	7,184.56	-3,375.30	2,662.75	4,263.94	1.24	-0.43	-0.74
12,127.00	90.10	123.20	7,183.73	-3,427.46	2,742.15	4,357.17	0.87	-0.64	-0.21

RECEIVED  
Office of Oil and Gas  
JUN 10 2015  
WV Department of Environmental Protection  
5000 Building 85

<b>Company:</b>	Trans Energy Inc.	<b>Local Co-ordinate Reference:</b>	Well 9H
<b>Project:</b>	Wetzel County, West Virginia (NAD 83)	<b>TVD Reference:</b>	WELL @ 1032.00usft (H&P 285)
<b>Site:</b>	Anderson	<b>MD Reference:</b>	WELL @ 1032.00usft (H&P 285)
<b>Well:</b>	9H	<b>North Reference:</b>	Grid
<b>Wellbore:</b>	Wellbore #1	<b>Survey Calculation Method:</b>	Minimum Curvature
<b>Design:</b>	Surveys	<b>Database:</b>	EDM 5000.1 Conroe DB

**Survey**

Measured Depth (usft)	Inclination (°)	Azimuth (°)	Vertical Depth (usft)	+N/-S (usft)	+E/-W (usft)	Vertical Section (usft)	Dogleg Rate (°/100usft)	Build Rate (°/100usft)	Turn Rate (°/100usft)
12,221.00	89.90	123.50	7,183.73	-3,479.13	2,820.67	4,449.43	0.38	-0.21	0.32
12,315.00	90.90	124.20	7,183.07	-3,531.49	2,898.74	4,541.84	1.30	1.06	0.74
12,410.00	91.00	123.70	7,181.49	-3,584.54	2,977.53	4,635.25	0.54	0.11	-0.53
12,504.00	91.00	123.70	7,179.85	-3,636.69	3,055.72	4,727.61	0.00	0.00	0.00
12,598.00	90.20	123.50	7,178.87	-3,688.70	3,134.01	4,819.94	0.88	-0.85	-0.21
12,692.00	90.10	123.50	7,178.62	-3,740.58	3,212.40	4,912.24	0.11	-0.11	0.00
12,787.00	90.20	123.50	7,178.38	-3,793.02	3,291.62	5,005.53	0.11	0.11	0.00
12,881.00	91.30	124.40	7,177.14	-3,845.51	3,369.58	5,097.97	1.51	1.17	0.96
12,976.00	91.20	125.10	7,175.07	-3,899.64	3,447.62	5,191.60	0.74	-0.11	0.74
13,070.00	90.70	126.90	7,173.51	-3,954.89	3,523.65	5,284.58	1.99	-0.53	1.91
13,164.00	90.10	126.40	7,172.86	-4,010.99	3,599.07	5,377.72	0.83	-0.64	-0.53
13,259.00	89.80	126.20	7,172.94	-4,067.24	3,675.63	5,471.77	0.38	-0.32	-0.21
13,353.00	90.90	125.50	7,172.37	-4,122.29	3,751.82	5,564.73	1.39	1.17	-0.74
13,448.00	91.10	123.20	7,170.71	-4,175.88	3,830.23	5,658.25	2.43	0.21	-2.42
13,542.00	90.50	122.80	7,169.40	-4,227.07	3,909.06	5,750.39	0.77	-0.64	-0.43
13,636.00	90.20	122.70	7,168.82	-4,277.92	3,988.12	5,842.46	0.34	-0.32	-0.11
13,730.00	90.10	122.50	7,168.58	-4,328.56	4,067.31	5,934.47	0.24	-0.11	-0.21
13,825.00	91.40	122.10	7,167.33	-4,379.32	4,147.60	6,027.36	1.43	1.37	-0.42
13,919.00	93.70	121.60	7,163.15	-4,428.87	4,227.36	6,119.02	2.50	2.45	-0.53
14,014.00	93.40	121.60	7,157.27	-4,478.56	4,308.12	6,211.48	0.32	-0.32	0.00
14,108.00	93.40	121.20	7,151.69	-4,527.44	4,388.21	6,302.92	0.42	0.00	-0.43
14,203.00	92.90	121.40	7,146.47	-4,576.72	4,469.25	6,395.31	0.57	-0.53	0.21
14,297.00	91.00	120.80	7,143.27	-4,625.25	4,549.70	6,486.73	2.12	-2.02	-0.64
14,391.00	91.00	123.50	7,141.63	-4,675.26	4,629.27	6,578.57	2.87	0.00	2.87
14,485.00	91.80	126.20	7,139.34	-4,728.95	4,706.38	6,671.24	2.99	0.85	2.87
14,580.00	92.00	127.10	7,136.19	-4,785.62	4,782.55	6,765.32	0.97	0.21	0.95
14,673.00	91.70	124.80	7,133.18	-4,840.19	4,857.80	6,857.26	2.49	-0.32	-2.47
14,767.00	91.60	122.20	7,130.48	-4,892.05	4,936.14	6,949.52	2.77	-0.11	-2.77
14,861.00	91.40	119.80	7,128.02	-4,940.44	5,016.68	7,040.92	2.56	-0.21	-2.55
14,955.00	91.30	119.40	7,125.80	-4,986.86	5,098.39	7,131.78	0.44	-0.11	-0.43
15,049.00	91.90	121.60	7,123.18	-5,034.54	5,179.35	7,222.99	2.43	0.64	2.34
15,123.00	92.00	122.90	7,120.66	-5,074.01	5,241.89	7,295.29	1.76	0.14	1.76
15,188.00	92.00	122.90	7,118.39	-5,109.29	5,296.44	7,358.95	0.00	0.00	0.00

Projection to TD - 15188.00' MD

**Survey Annotations**

Measured Depth (usft)	Vertical Depth (usft)	Local Coordinates		Comment
		+N/-S (usft)	+E/-W (usft)	
15,188.00	7,118.39	-5,109.29	5,296.44	Projection to TD - 15188.00' MD

RECEIVED  
Office of Oil and Gas

JUN 10 2015

WV Department of  
Environmental Protection