

# J.M. ALLEN ET AL LEASE 858 ACRES± WELL NO. 513725

WELL NO. WV 513725  
STATE PLANE COORDINATES  
(NORTH ZONE) NAD'27

N. 385,087.1  
E. 1,710,267.3

LAT=(N) 39.552740  
LONG=(W) 80.527541

UTM (NAD83)(METERS)  
N. 4,378,233.6  
E. 540,607.0

LANDING POINT  
WELL NO. WV 513725  
STATE PLANE COORDINATES  
(NORTH ZONE) NAD'27

N. 384,248.8  
E. 1,709,513.8

LAT=(N) 39.550415  
LONG=(W) 80.530179

UTM (NAD83)(METERS)  
N. 4,377,974.4  
E. 540,381.7

### NOTES ON SURVEY

1. TIES TO WELLS, CORNERS AND REFERENCES ARE BASED ON GRID NORTH FOR THE WV STATE PLANE COORDINATE SYSTEM NORTH ZONE NAD '27.
2. LEASE BOUNDARY SHOWN HEREON TAKEN FROM DEED BOOK 14 PAGE 302.
3. SURFACE OWNER AND ADJOINER INFORMATION TAKEN FROM THE ASSESSOR AND COUNTY CLERK RECORDS OF WETZEL COUNTY IN JULY, 2012.
4. WELL LAT./LONG. (NAD'27) ESTABLISHED BY DGPS(SURVEY GRADE TIE TO CORS NETWORK).

### REFERENCES



**BOTTOM HOLE**  
WELL NO. WV 513725  
STATE PLANE COORDINATES  
(NORTH ZONE) NAD'27

N. 379,754.6  
E. 1,711,903.4

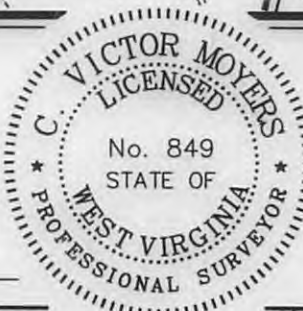
LAT=(N) 39.538152  
LONG=(W) 80.521524

UTM (NAD83)(METERS)  
N. 4,376,617.3  
E. 541,132.5



I THE UNDERSIGNED, HEREBY CERTIFY THAT THIS PLAT IS CORRECT TO THE BEST OF MY KNOWLEDGE AND BELIEF AND SHOWS ALL THE INFORMATION REQUIRED BY LAW AND THE REGULATIONS ISSUED AND PRESCRIBED BY THE DIVISION OF ENVIRONMENTAL PROTECTION.


P.S. 849 *C. Victor Moyers*



(+) DENOTES LOCATION OF WELL ON UNITED STATES TOPOGRAPHIC MAPS.  
 DATE APRIL 3, 20 13  
 OPERATORS WELL NO. WV 513725  
 API WELL NO. 47 - 103 - 2901 H6A  
 STATE COUNTY PERMIT

MINIMUM DEGREE OF ACCURACY 1/200 FILE NO. 6242P513725  
 PROVEN SOURCE OF ELEVATION DGPS (SURVEY GRADE TIE TO CORS NETWORK) SCALE 1" = 1000'

STATE OF WEST VIRGINIA  
 DIVISION OF ENVIRONMENTAL PROTECTION  
 OFFICE OF OIL AND GAS



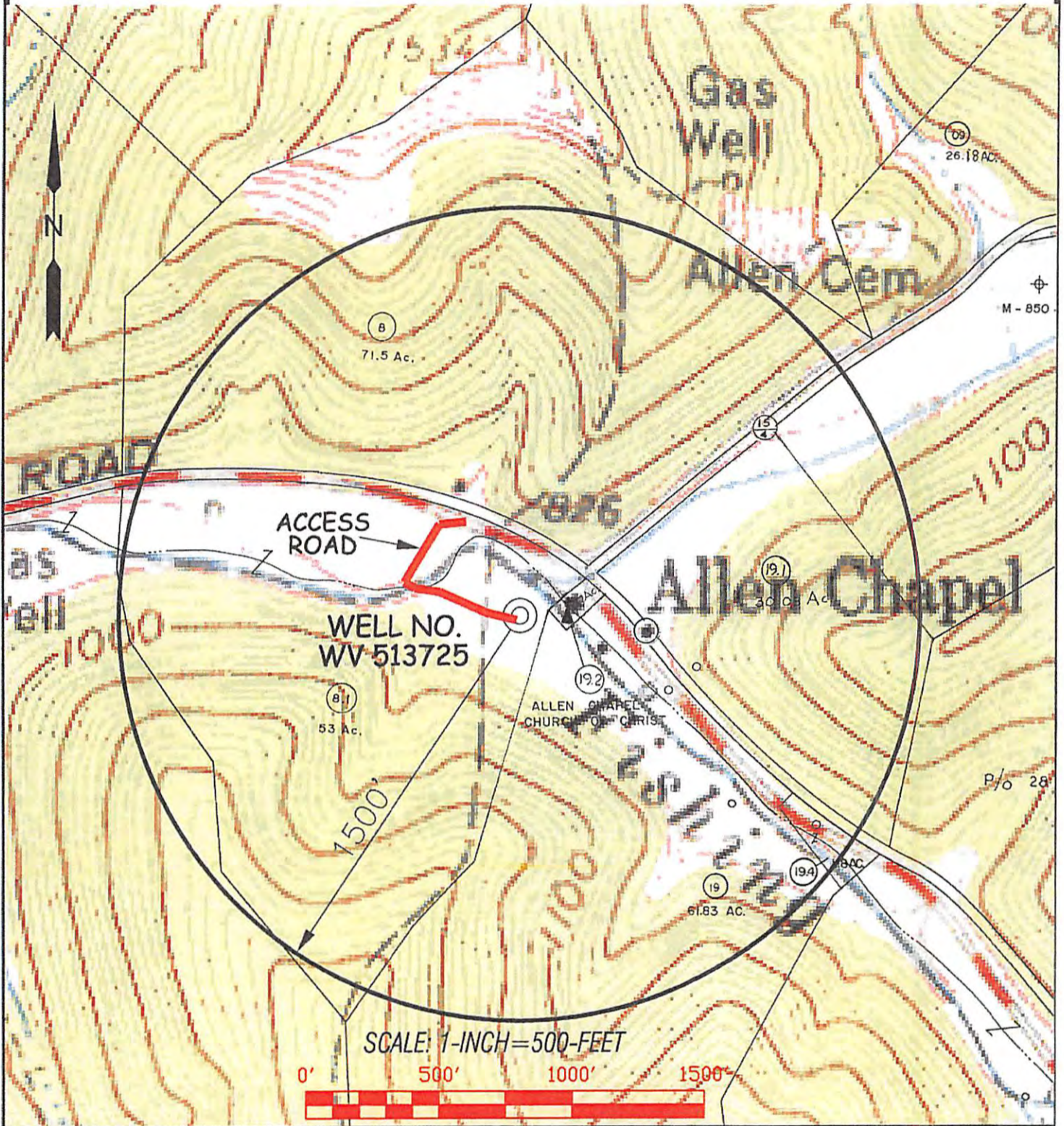
WELL TYPE: OIL  GAS  LIQUID INJECTION  WASTE DISPOSAL  IF "GAS" PRODUCTION  STORAGE  DEEP  SHALLOW


LOCATION: ELEVATION 919' (PAD ELEVATION) WATERSHED NORTH FORK FISHING CREEK  
 DISTRICT GRANT COUNTY WETZEL QUADRANGLE BIG RUN 7.5'  
 SURFACE OWNER EQT PRODUCTION COMPANY ACREAGE 53±  
 ROYALTY OWNER J.M. ALLEN ESTATE ET AL LEASE ACREAGE 858±  
 PROPOSED WORK: LEASE NO. 300645  
 DRILL  CONVERT  DRILL DEEPER  REDRILL  FRACTURE OR STIMULATE  PLUG OFF OLD FORMATION   
 PERFORATE NEW FORMATION  PLUG AND ABANDON  CLEAN OUT AND REPLUG  OTHER   
 PHYSICAL CHANGE IN WELL (SPECIFY) \_\_\_\_\_ TARGET FORMATION GENESEO  
 ESTIMATED DEPTH \_\_\_\_\_

WELL OPERATOR EQT PRODUCTION COMPANY DESIGNATED AGENT REX C. RAY  
 ADDRESS 115 PROFESSIONAL PLACE P.O. BOX 280 BRIDGEPORT, WV 26330 ADDRESS 115 PROFESSIONAL P.O. BOX 280 BRIDGEPORT, WV 26330

07/26/2013

# J.M. ALLEN ET AL LEASE WELL NO. WV 513725



 <b>Professional Energy Consultants</b> <small>A DIVISION OF GREAT LAND SURVEYING</small> SURVEYORS PROJECT MGMT ENGINEERS ENVIRONMENTAL <small>228 West 17th St. P.O. Box 530, Hurricane, WV 25135 (304) 482-3624</small> <small>8000 Olden Bottom Road, Shadywell, OH 43947 (614) 571-1815</small> <small>INDUSTRY. SAFETY. QUALITY.</small>		TOPO SECTION OF: BIG RUN, WV 7.5' QUAD.		OPERATOR: EQT PRODUCTION COMPANY 115 PROFESSIONAL PLACE P.O. BOX 280 BRIDGEPORT, WV 26330		
		DISTRICT	COUNTY	TAX MAP-PARCEL NO.		
DRAWN BY K.D.W.	FILE NO. 6242	DATE 04/03/13	CADD FILE: 6242WS513725.DWG	GRANT	WETZEL	19-8.1

RECEIVED  
Dept of Oil and Gas

APR 30 2013

Department of  
Environmental Protection