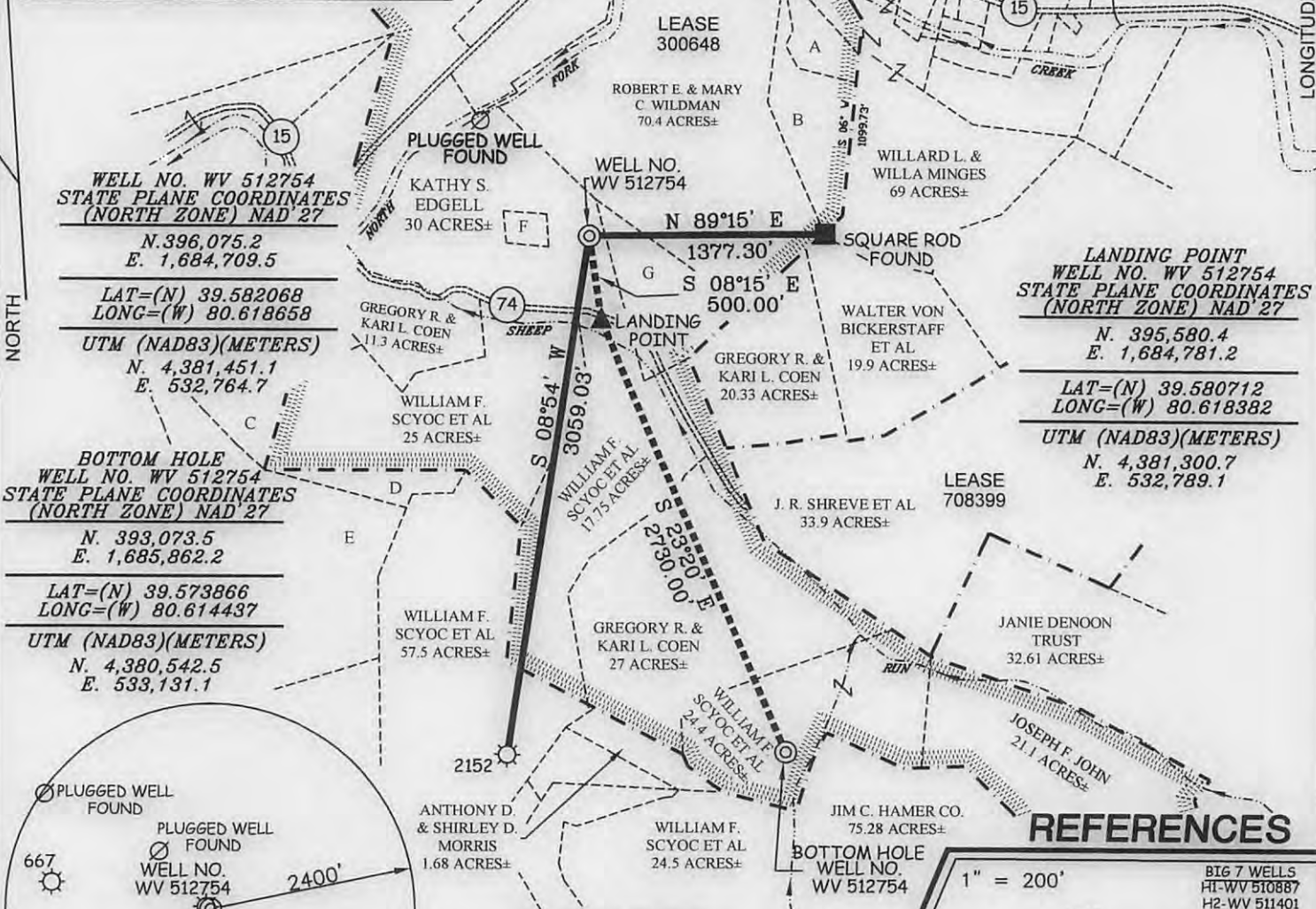


A	WALTER V. BICKERSTAFF ET AL	2.3 ACRES±
B	WALTER V. BICKERSTAFF ET AL	7.6 ACRES±
C	SHELBY A. TITUS	15.848 ACRES±
D	JOHN STANLEY STARKEY	4.24 ACRES±
E	GAROLD R. & SHIRLEY RICE	35.90 ACRES±
F	SHREVE CEMETERY	1 ACRES±
G	DONALD W. & MARY E. DENNISON	7.8 ACRES±

J.R. SHREVE LEASE 630 ACRES± WELL NO. WV 512754



WELL NO. WV 512754
STATE PLANE COORDINATES
(NORTH ZONE) NAD 27

N. 396,075.2
E. 1,684,709.5

LAT=(N) 39.582068
LONG=(W) 80.618658

UTM (NAD83)(METERS)

N. 4,381,451.1
E. 532,764.7

LANDING POINT
WELL NO. WV 512754
STATE PLANE COORDINATES
(NORTH ZONE) NAD 27

N. 395,580.4
E. 1,684,781.2

LAT=(N) 39.580712
LONG=(W) 80.618382

UTM (NAD83)(METERS)

N. 4,381,300.7
E. 532,789.1

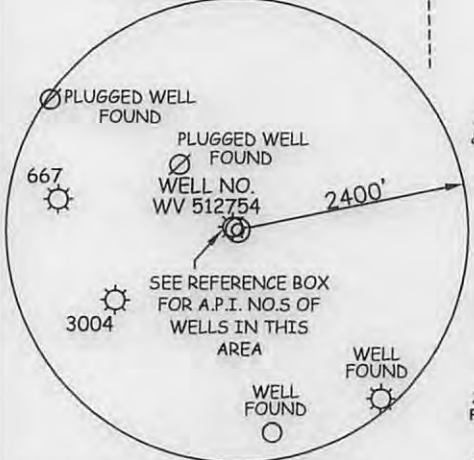
BOTTOM HOLE
WELL NO. WV 512754
STATE PLANE COORDINATES
(NORTH ZONE) NAD 27

N. 393,073.5
E. 1,685,862.2

LAT=(N) 39.573866
LONG=(W) 80.614437

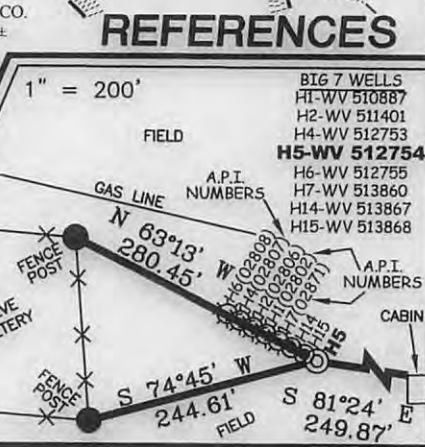
UTM (NAD83)(METERS)

N. 4,380,542.5
E. 533,131.1



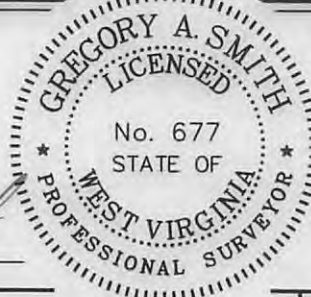
NOTES ON SURVEY

1. TIES TO WELLS, CORNERS AND REFERENCES ARE BASED ON GRID NORTH FOR THE WV STATE PLANE COORDINATE SYSTEM NORTH ZONE NAD'27.
2. LEASE BOUNDARY SHOWN HEREON TAKEN FROM DEED BOOK 113 AT PAGE 99 AND OTHER DEEDS/PLATS ON RECORD.
3. SURFACE OWNER AND ADJOINER INFORMATION TAKEN FROM THE ASSESSOR AND COUNTY CLERK RECORDS OF WETZEL COUNTY IN JULY, 2012.
4. WELL LAT./LONG. (NAD'27) AND UTM (NAD'83) COORDINATES ESTABLISHED BY DGPS(SURVEY GRADE TIE TO CORS NETWORK).
5. SEE REFERENCE BOX FOR A MORE ACCURATE LOCATION OF THE SHREVE CEMETERY LABELED AS TRACT "F".



I THE UNDERSIGNED, HEREBY CERTIFY THAT THIS PLAT IS CORRECT TO THE BEST OF MY KNOWLEDGE AND BELIEF AND SHOWS ALL THE INFORMATION REQUIRED BY LAW AND THE REGULATIONS ISSUED AND PRESCRIBED BY THE DIVISION OF ENVIRONMENTAL PROTECTION.

P.S. 677
Gregory A. Smith



(+) DENOTES LOCATION OF WELL ON UNITED STATES TOPOGRAPHIC MAPS.
DATE APRIL 3, 20 13
OPERATORS WELL NO. WV 512754
API WELL NO. 47 - 103 - 2897 H6A
STATE COUNTY PERMIT

MINIMUM DEGREE OF ACCURACY 1 / 2500 FILE NO. 6246P512754
PROVEN SOURCE OF ELEVATION DGPS (SURVEY GRADE TIE TO CORS NETWORK) SCALE 1" = 1000'

STATE OF WEST VIRGINIA
DIVISION OF ENVIRONMENTAL PROTECTION
OFFICE OF OIL AND GAS

WELL TYPE: OIL GAS LIQUID INJECTION WASTE DISPOSAL IF "GAS" PRODUCTION STORAGE DEEP SHALLOW

LOCATION: ELEVATION 924' (AS BUILT PAD ELEVATION) WATERSHED SHEEP RUN AND NORTH FORK FISHING CREEK
DISTRICT GRANT COUNTY WETZEL QUADRANGLE BIG RUN 7.5'

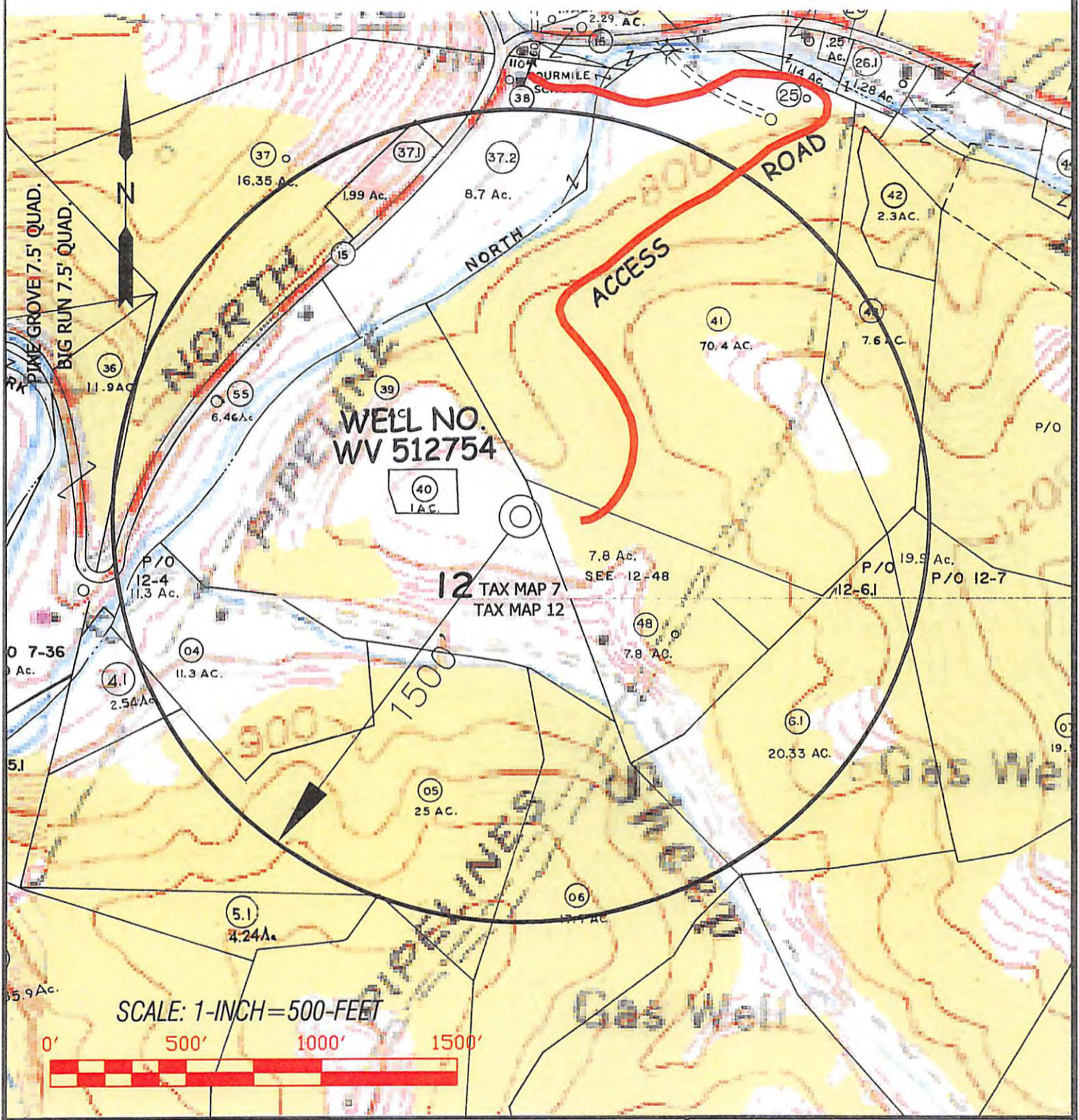
SURFACE OWNER KATHY S. EDGELL ACREAGE 30±
ROYALTY OWNER NANCY & JOHN FOUT ET AL ACREAGE 630±

PROPOSED WORK: LEASE NO. 300648
DRILL CONVERT DRILL DEEPER REDRILL FRACTURE OR STIMULATE PLUG OFF OLD FORMATION
PERFORATE NEW FORMATION PLUG AND ABANDON CLEAN OUT AND REPLUG OTHER
PHYSICAL CHANGE IN WELL (SPECIFY) _____ TARGET FORMATION MARCELLUS
ESTIMATED DEPTH _____

WELL OPERATOR EQT PRODUCTION COMPANY DESIGNATED AGENT REX C. RAY
ADDRESS 115 PROFESSIONAL PLACE P.O. BOX 280 BRIDGEPORT, WV 26330 ADDRESS 115 PROFESSIONAL PLACE P.O. BOX 280 BRIDGEPORT, WV 26330

06/14/2013

J.R.SHREVE LEASE WELL NO. WV 512754



Professional Energy Consultants
A DIVISION OF SETHI LAND & SURVEYING

SLS

SURVEYORS PROJECT MANAGERS ENGINEERS ENVIRONMENTAL

225 West 17th St.
P.O. Box 150
Cheyenne, WY 82001
(307) 482-2533

88005 Drive, Bottom Road
Shelburne, VT 05487
(740) 571-5911

Integrity. Integrity. Quality.

DRAWN BY: K.D.W. FILE NO.: 6246 DATE: 04/03/13 CADD FILE: 6246WSS12754A.DWG

TOPO SECTION OF:
BIG RUN, WV 7.5' QUAD.

COUNTY	DISTRICT	TAX MAP-PARCEL NO.
WETZEL	GRANT	7-39

OPERATOR:
EQT PRODUCTION COMPANY
115 PROFESSIONAL PLACE
P.O. BOX 280
BRIDGEPORT, WV 26330

Received
Office of Oil & Gas

APR 9 2013

06/14/2013