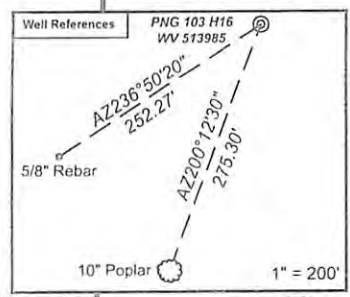


WV 513985

EQT Production Company

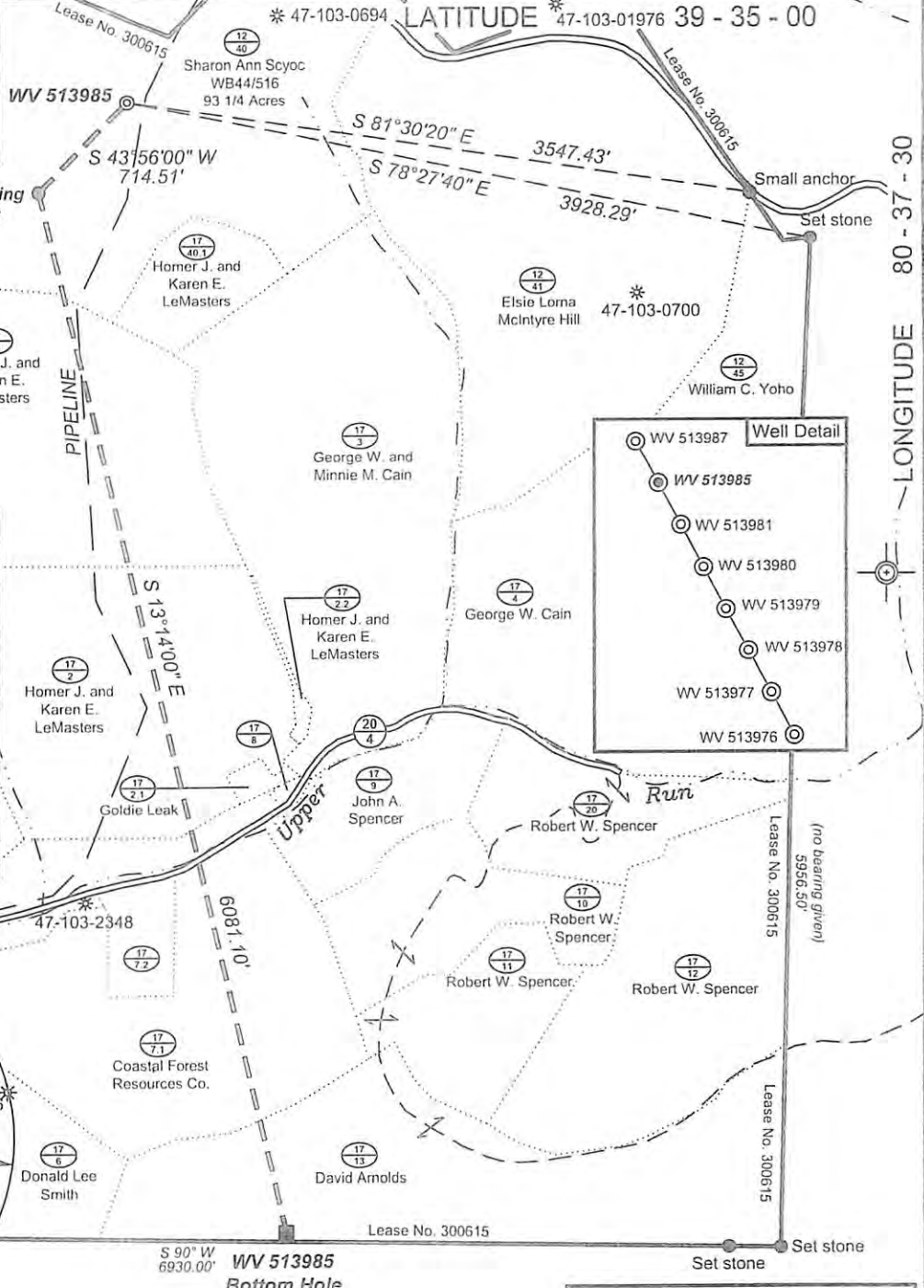
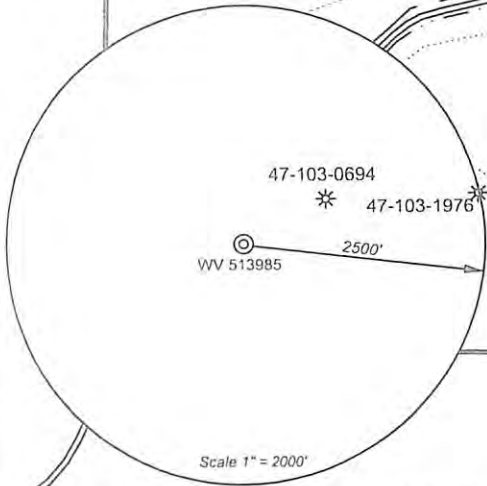
1,104 Acre Lease

441'



Notes:
 WV 513985 coordinates are
 N: 390,001 Lat: 39.565395
 E: 1,682,394 Long: 80.626419
 UTM N: 4,379,589 E: 532,090
 WV 513985 Landing Point coordinates are
 N: 389,487 Lat: 39.563965
 E: 1,681,898 Long: 80.628155
 UTM N: 4,379,429 E: 531,942
 WV 513985 Bottom Hole coordinates are
 N: 383,567 Lat: 39.547762
 E: 1,683,290 Long: 80.622955
 UTM N: 4,377,633 E: 532,396
 West Virginia Coordinate system of 1927 (North Zone).
 Geographic coordinates are WGS84.
 UTM coordinates are NAD83, Zone 17, Meters.
 Plat orientation, corner and well ties are based upon
 the grid north meridian.
 Well location references are based upon the grid north
 meridian.

GRID NORTH



LONGITUDE 80 - 37 - 30

6,590'

(⊕) Denotes Location of Well on United States Topographic Maps

- ⊕ Proposed Gas Well
- Located Corner, as noted
- Surface Tract Lines
- Lease Boundary



I, the undersigned, hereby certify that this plat is correct to the best of my knowledge and belief and shows all the information required by law and the regulations issued and prescribed by the Department of Environmental Protection.

Ben R. Singleton
 P.S. 2092



FILE NO: 212-34-G-10
 DRAWING NO: 212-10 PNG 103 H16.dwg
 SCALE: 1" = 1000'
 MINIMUM DEGREE OF ACCURACY: 1:2500
 PROVEN SOURCE OF ELEVATION: NGS CORS Station

STATE OF WEST VIRGINIA
 DEPARTMENT OF ENVIRONMENTAL PROTECTION
 OIL AND GAS DIVISION

DATE: November 14 20 12
 OPERATOR'S WELL NO. WV 513985
 API WELL NO
 47 - 103 - 2862H6A
 STATE COUNTY PERMIT

WELL TYPE: OIL GAS LIQUID INJECTION WASTE DISPOSAL
 (IF GAS) PRODUCTION: STORAGE DEEP SHALLOW
 LOCATION: ELEVATION: 1458' WATERSHED Upper Run QUADRANGLE: Pine Grove
 DISTRICT: Grant COUNTY: Weizel
 SURFACE OWNER: Sharon Ann Scyoc ACREAGE: 93 1/4
 ROYALTY OWNER: Shibden Estates, Inc. LEASE NO: 300615 ACREAGE: 1,104
 PROPOSED WORK: DRILL CONVERT DRILL DEEPER FRACTURE OR STIMULATE PLUG OFF OLD FORMATION
 PERFORATE NEW FORMATION OTHER PHYSICAL CHANGE IN WELL (SPECIFY)
 PLUG AND ABANDON CLEAN OUT AND REPLUG TARGET FORMATION: Geneseo ESTIMATED DEPTH: TVD=7,800 MD=15,800

WELL OPERATOR: EQT Production Company DESIGNATED AGENT: Rex C. Ray
 ADDRESS: 1710 Pennsylvania Avenue ADDRESS: 1710 Pennsylvania Avenue
 Charleston, WV 25302 Charleston, WV 25302

02/15/2013

Topo Quad: Pine Grove 7.5'

Scale: 1" = 2000'

County: Wetzel

Date: November 9, 2012

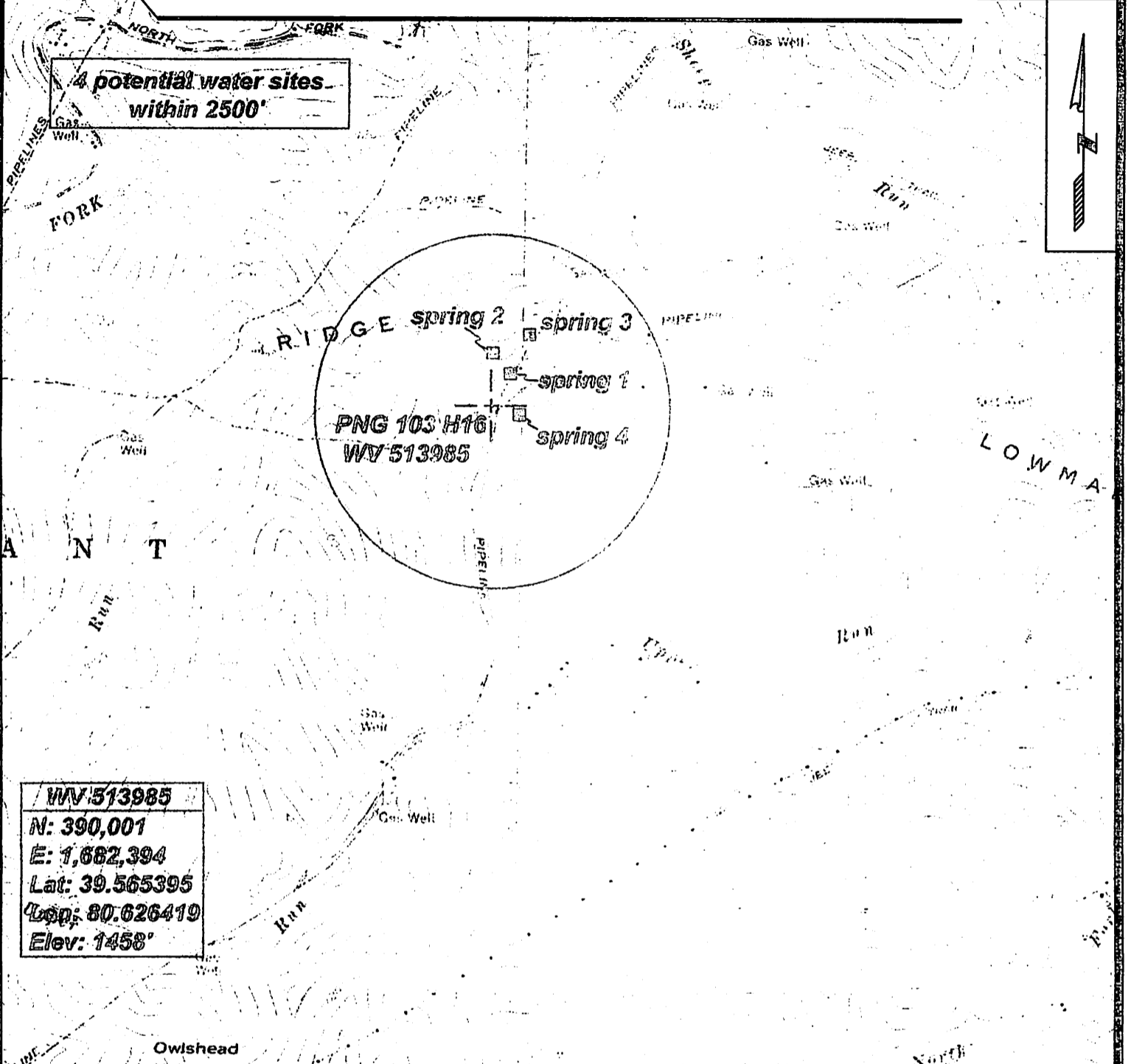
District: Grant

Project No: 212-34-G-10

Water

WV 513985 PNG 103 H16

Topo



4 potential water sites within 2500'

spring 2 | spring 3
 |
 spring 1
 |
 PNG 103 H16
 WV 513985
 |
 spring 4

WV 513985
 N: 390,001
 E: 1,682,394
 Lat: 39.565395
 Lon: 80.626419
 Elev: 1458'



SURVEYING AND MAPPING SERVICES PERFORMED BY:
ALLEGHENY SURVEYS, INC.
 1-800-482-8606
 P.O. BOX 438
 BIRCH RIVER, WV 26610
 PH: (304) 649-8606
 FAX: (304) 649-8608

PREPARED FOR:
EQT Production Co. Inc.
 1710 Pennsylvania Ave.
 Charleston, WV 25302

103-02862 H6A

DEC 21 2012