

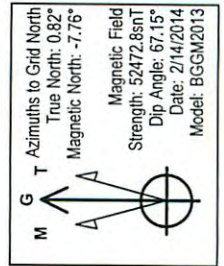


Stone  
2H  
2H Plan 7 Approved Plan  
GL 1215' & KB 18' @ 1233.00ft (Saxon 141)  
Heather Prospect (NAD 27)

PROJECT DETAILS:  
Geodetic System: US State Plane 1927 (Exact solution)  
Datum: NAD 1927 (NADCON CONUS)  
Ellipsoid: Clarke 1866  
Zone: West Virginia North 4701  
System Datum: Mean Sea Level

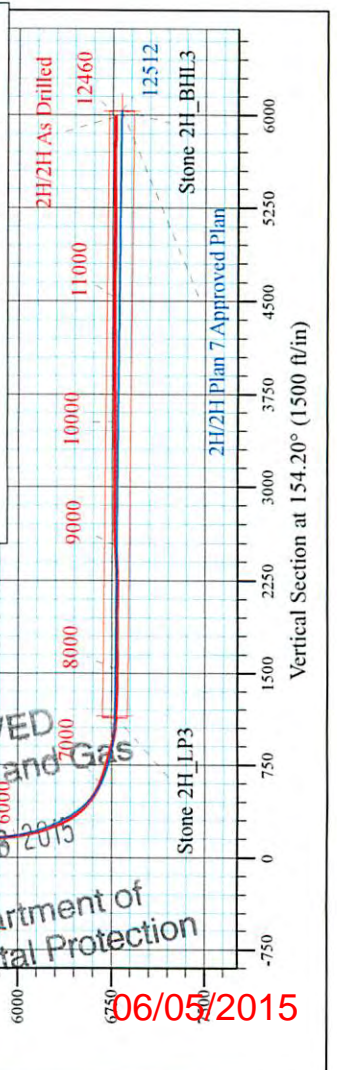
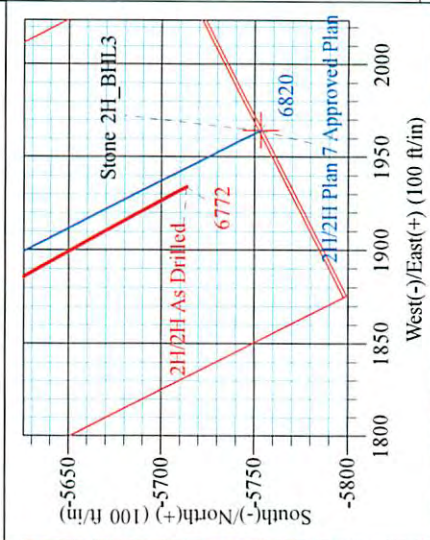
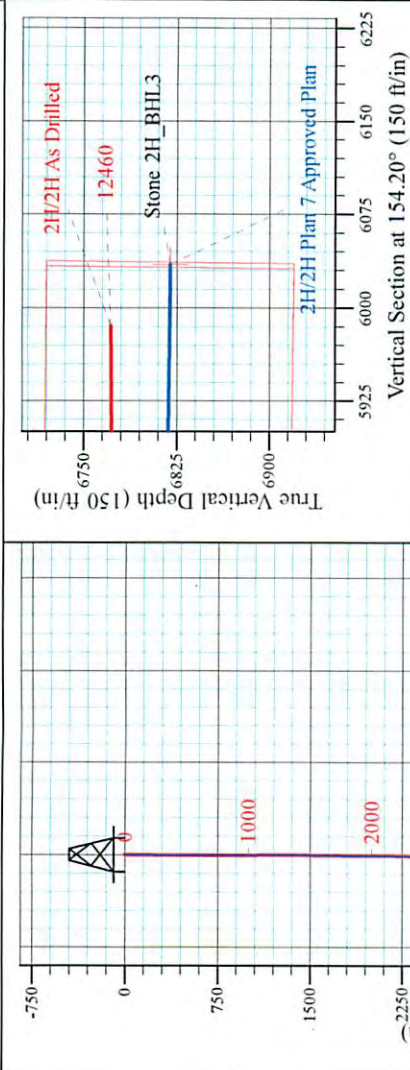


Shane Rhodes  
15.29, March 03 2015  
Scientific Drilling, International  
124 Vista Drive  
Charlertoi, PA 15022



WELL DETAILS: 2H

+N/-S	+E/-W	Northing	Easting	Latitude	Longitude
0.00	0.00	421793.00	1638969.00	39° 39' 3.569 N	80° 46' 56.023 W



RECEIVED  
Office of Oil and Gas  
APR 28 2015  
WV Department of  
Environmental Protection  
06/05/2015



# Stone Energy Corporation

Heather Prospect (NAD 27)

Stone

2H

OH

Design: 2H As Drilled

## Standard Survey Report

03 March, 2015



[www.scientificdrilling.com](http://www.scientificdrilling.com)

RECEIVED  
Office of Oil and Gas

APR 28 2015

WV Department of  
Environmental Protection

06/05/2015



Scientific Drilling International  
Survey Report



<b>Company:</b>	Stone Energy Corporation	<b>Local Co-ordinate Reference:</b>	Well 2H
<b>Project:</b>	Heather Prospect (NAD 27)	<b>TVD Reference:</b>	GL 1215' & KB 18' @ 1233.00ft (Saxon 141)
<b>Site:</b>	Stone	<b>MD Reference:</b>	GL 1215' & KB 18' @ 1233.00ft (Saxon 141)
<b>Well:</b>	2H	<b>North Reference:</b>	Grid
<b>Wellbore:</b>	OH	<b>Survey Calculation Method:</b>	Minimum Curvature
<b>Design:</b>	2H As Drilled	<b>Database:</b>	Northeast District

<b>Project</b>	Heather Prospect (NAD 27), Wetzel County, West Virginia		
<b>Map System:</b>	US State Plane 1927 (Exact solution)	<b>System Datum:</b>	Mean Sea Level
<b>Geo Datum:</b>	NAD 1927 (NADCON CONUS)		
<b>Map Zone:</b>	West Virginia North 4701		

<b>Site</b>	Stone				
<b>Site Position:</b>		<b>Northing:</b>	421,797.00 usft	<b>Latitude:</b>	39° 39' 3.606 N
<b>From:</b>	Map	<b>Easting:</b>	1,638,950.00 usft	<b>Longitude:</b>	80° 46' 56.267 W
<b>Position Uncertainty:</b>	0.00 ft	<b>Slot Radius:</b>	13-3/16 "	<b>Grid Convergence:</b>	-0.82 °

<b>Well</b>	2H					
<b>Well Position</b>	<b>+N/-S</b>	0.00 ft	<b>Northing:</b>	421,793.00 usft	<b>Latitude:</b>	39° 39' 3.569 N
	<b>+E/-W</b>	0.00 ft	<b>Easting:</b>	1,638,969.00 usft	<b>Longitude:</b>	80° 46' 56.023 W
<b>Position Uncertainty</b>		0.00 ft	<b>Wellhead Elevation:</b>	ft	<b>Ground Level:</b>	1,215.00 ft

<b>Wellbore</b>	OH				
<b>Magnetics</b>	<b>Model Name</b>	<b>Sample Date</b>	<b>Declination (°)</b>	<b>Dip Angle (°)</b>	<b>Field Strength (nT)</b>
	IGRF2010	4/15/2013	-8.51	67.21	52,620
	BGGM2013	1/13/2014	-8.58	67.16	52,484
	BGGM2013	2/14/2014	-8.58	67.15	52,473

<b>Design</b>	2H As Drilled				
<b>Audit Notes:</b>					
<b>Version:</b>	1.0	<b>Phase:</b>	ACTUAL	<b>Tie On Depth:</b>	0.00
<b>Vertical Section:</b>	<b>Depth From (TVD) (ft)</b>	<b>+N/-S (ft)</b>	<b>+E/-W (ft)</b>	<b>Direction (°)</b>	
	0.00	0.00	0.00	161.15	

<b>Survey Program</b>	<b>Date</b>	3/3/2015			
<b>From (ft)</b>	<b>To (ft)</b>	<b>Survey (Wellbore)</b>	<b>Tool Name</b>	<b>Description</b>	
15.00	3,311.02	Survey 4 - SDI Gyro 2 (OH)	SDI Standard Keeper 103	SDI Standard Wireline Keeper ver 1.0.3	
3,430.00	12,460.00	Survey 6 - SDI MWD (OH)	MWD SDI	MWD - Standard ver 1.0.1	

Measured Depth (ft)	Inclination (°)	Azimuth (°)	Vertical Depth (ft)	+N/-S (ft)	+E/-W (ft)	Vertical Section (ft)	Dogleg Rate (°/100usft)	Build Rate (°/100usft)	Turn Rate (°/100usft)
0.00	0.00	0.00	0.00	0.00	0.00	0.00	0.00	0.00	0.00
15.00	0.00	0.00	15.00	0.00	0.00	0.00	0.00	0.00	0.00
<b>Ground Level</b>									
100.00	1.70	9.10	99.99	1.25	0.20	-1.11	2.00	2.00	0.00
<b>First SDI Gyro Survey</b>									
200.00	0.73	21.70	199.96	3.30	0.67	-2.91	1.00	0.97	12.60
300.00	0.27	39.34	299.96	4.08	1.05	-3.52	0.48	0.46	17.64

RECEIVED  
Office of Oil and Gas  
APR 28 2015  
WV Department of Environmental Protection  
06/05/2015



Scientific Drilling International  
Survey Report



<b>Company:</b>	Stone Energy Corporation	<b>Local Co-ordinate Reference:</b>	Well 2H
<b>Project:</b>	Heather Prospect (NAD 27)	<b>TVD Reference:</b>	GL 1215' & KB 18' @ 1233.00ft (Saxon 141)
<b>Site:</b>	Stone	<b>MD Reference:</b>	GL 1215' & KB 18' @ 1233.00ft (Saxon 141)
<b>Well:</b>	2H	<b>North Reference:</b>	Grid
<b>Wellbore:</b>	OH	<b>Survey Calculation Method:</b>	Minimum Curvature
<b>Design:</b>	2H As Drilled	<b>Database:</b>	Northeast District

Measured Depth (ft)	Inclination (°)	Azimuth (°)	Vertical Depth (ft)	+N/-S (ft)	+E/-W (ft)	Vertical Section (ft)	Dogleg Rate (°/100usft)	Build Rate (°/100usft)	Turn Rate (°/100usft)
400.00	0.12	66.98	399.96	4.30	1.30	-3.65	0.17	-0.15	27.64
500.00	0.15	105.06	499.96	4.31	1.52	-3.58	0.09	0.03	38.08
600.00	0.18	90.99	599.96	4.27	1.81	-3.46	0.05	0.03	-14.07
700.00	0.13	46.69	699.96	4.34	2.05	-3.45	0.13	-0.05	-44.30
800.00	0.13	53.90	799.96	4.49	2.22	-3.53	0.02	0.00	7.21
900.00	0.14	92.55	899.96	4.55	2.43	-3.52	0.09	0.01	38.65
1,000.00	0.25	78.61	999.96	4.59	2.77	-3.45	0.12	0.11	-13.94
1,100.00	0.17	113.70	1,099.96	4.57	3.12	-3.32	0.15	-0.08	35.09
1,200.00	0.12	94.53	1,199.96	4.50	3.36	-3.18	0.07	-0.05	-19.17
1,300.00	0.13	84.32	1,299.96	4.51	3.58	-3.11	0.02	0.01	-10.21
1,400.00	0.14	147.39	1,399.96	4.41	3.76	-2.96	0.14	0.01	63.07
1,500.00	0.28	101.44	1,499.96	4.26	4.06	-2.72	0.21	0.14	-45.95
1,600.00	0.21	37.72	1,599.95	4.36	4.41	-2.70	0.27	-0.07	-63.72
1,700.00	0.42	5.01	1,699.95	4.87	4.56	-3.14	0.27	0.21	-32.71
1,800.00	0.43	358.25	1,799.95	5.61	4.58	-3.83	0.05	0.01	-6.76
1,900.00	0.53	344.74	1,899.95	6.43	4.44	-4.65	0.15	0.10	-13.51
2,000.00	0.89	305.58	1,999.94	7.33	3.69	-5.74	0.58	0.36	-39.16
2,100.00	1.08	307.43	2,099.92	8.35	2.31	-7.16	0.19	0.19	1.85
2,200.00	1.14	307.86	2,199.91	9.54	0.78	-8.77	0.06	0.06	0.43
2,300.00	0.82	311.44	2,299.89	10.62	-0.54	-10.23	0.33	-0.32	3.58
2,400.00	0.81	335.88	2,399.88	11.74	-1.37	-11.55	0.35	-0.01	24.44
2,500.00	0.89	339.37	2,499.87	13.11	-1.93	-13.03	0.10	0.08	3.49
2,600.00	2.63	125.73	2,599.84	12.50	-0.34	-11.94	3.41	1.74	146.36
2,700.00	3.28	121.87	2,699.71	9.65	3.95	-7.86	0.68	0.65	-3.86
2,800.00	5.96	110.49	2,799.38	6.32	11.24	-2.35	2.82	2.68	-11.38
2,900.00	7.71	124.77	2,898.67	0.68	21.62	6.34	2.43	1.75	14.28
3,000.00	6.81	156.48	2,997.90	-8.59	29.50	17.66	4.05	-0.90	31.71
3,100.00	4.67	202.15	3,097.45	-17.80	30.33	26.65	4.87	-2.14	45.67
3,200.00	6.30	223.34	3,196.99	-25.56	25.03	32.28	2.57	1.63	21.19
3,300.00	7.68	230.35	3,296.25	-33.82	16.12	37.21	1.62	1.38	7.01
3,311.02	7.77	230.57	3,307.17	-34.76	14.97	37.73	0.86	0.82	2.00
<b>Last SDI Gyro Survey</b>									
3,430.00	8.05	224.96	3,425.02	-45.76	2.88	44.24	0.69	0.24	-4.72
<b>First SDI MWD Survey</b>									
3,522.00	6.66	228.32	3,516.26	-53.87	-5.66	49.15	1.58	-1.51	3.65
3,614.00	4.66	242.13	3,607.81	-59.17	-12.95	51.81	2.62	-2.17	15.01
3,706.00	4.70	228.01	3,699.51	-63.43	-19.06	53.88	1.25	0.04	-15.35
3,796.00	4.21	197.37	3,789.25	-69.06	-22.78	57.99	2.67	-0.54	23.94
3,889.00	3.53	167.74	3,882.05	-75.11	-23.19	63.59	2.24	-0.73	-31.86
3,983.00	2.93	150.35	3,975.90	-80.03	-21.39	68.82	1.22	-0.64	-18.50
4,074.00	3.14	141.69	4,066.77	-84.00	-18.70	73.46	0.55	0.23	-9.52
4,165.00	2.44	135.18	4,157.66	-87.33	-15.79	77.55	0.84	-0.77	-7.15
4,259.00	2.02	147.89	4,251.59	-90.16	-13.49	80.96	0.69	-0.45	43.52
4,353.00	2.95	180.15	4,345.51	-93.98	-12.62	84.86	1.75	0.99	34.62

RECEIVED  
Office of Oil and Gas  
APR 28 2015  
Department of  
Environmental Protection



# Scientific Drilling International

## Survey Report



<b>Company:</b>	Stone Energy Corporation	<b>Local Co-ordinate Reference:</b>	Well 2H
<b>Project:</b>	Heather Prospect (NAD 27)	<b>TVD Reference:</b>	GL 1215' & KB 18' @ 1233.00ft (Saxon 141)
<b>Site:</b>	Stone	<b>MD Reference:</b>	GL 1215' & KB 18' @ 1233.00ft (Saxon 141)
<b>Well:</b>	2H	<b>North Reference:</b>	Grid
<b>Wellbore:</b>	OH	<b>Survey Calculation Method:</b>	Minimum Curvature
<b>Design:</b>	2H As Drilled	<b>Database:</b>	Northeast District

### Survey

Measured Depth (ft)	Inclination (°)	Azimuth (°)	Vertical Depth (ft)	+N/-S (ft)	+E/-W (ft)	Vertical Section (ft)	Dogleg Rate (°/100usft)	Build Rate (°/100usft)	Turn Rate (°/100usft)
4,446.00	3.41	180.04	4,438.36	-99.14	-12.63	89.74	0.49	0.49	-0.12
4,541.00	3.31	167.74	4,533.20	-104.64	-12.05	95.14	0.76	-0.11	-12.95
4,632.00	3.34	160.85	4,624.05	-109.71	-10.62	100.40	0.44	0.03	-7.57
4,724.00	2.65	161.53	4,715.92	-114.26	-9.07	105.21	0.75	-0.75	0.74
4,815.00	2.57	151.85	4,806.83	-118.06	-7.44	109.32	0.49	-0.09	-10.64
4,908.00	2.91	159.23	4,899.72	-122.10	-5.62	113.74	0.53	0.37	7.94
4,999.00	3.48	163.71	4,990.58	-126.91	-4.02	118.81	0.68	0.63	4.92
5,092.00	4.08	162.87	5,083.38	-132.79	-2.26	124.94	0.65	0.65	-0.90
5,184.00	4.75	162.50	5,175.10	-139.55	-0.15	132.01	0.73	0.73	-0.40
5,278.00	4.03	159.91	5,268.83	-146.36	2.16	139.21	0.79	-0.77	-2.76
5,372.00	2.55	162.40	5,362.67	-151.46	3.92	144.60	1.58	-1.57	2.65
5,464.00	2.20	153.53	5,454.59	-154.99	5.33	148.40	0.55	-0.38	-9.64
5,559.00	2.82	148.63	5,549.50	-158.61	7.36	152.49	0.69	0.65	-5.16
5,652.00	1.42	157.00	5,642.43	-161.63	9.00	155.87	1.54	-1.51	9.00
5,673.00	1.14	159.89	5,663.43	-162.06	9.17	156.34	1.37	-1.33	13.76
5,705.00	1.24	149.37	5,695.42	-162.66	9.46	156.99	0.75	0.31	-32.88
5,736.00	0.82	148.95	5,726.42	-163.14	9.74	157.54	1.36	-1.35	-1.35
5,768.00	2.02	188.23	5,758.41	-163.89	9.78	158.27	4.62	3.75	122.75
5,800.00	4.24	207.77	5,790.36	-165.50	9.15	159.58	7.60	6.94	61.06
5,831.00	7.03	214.26	5,821.21	-168.08	7.55	161.51	9.22	9.00	20.94
5,863.00	9.18	217.18	5,852.88	-171.73	4.90	164.11	6.84	6.72	9.13
5,895.00	10.82	218.17	5,884.40	-176.13	1.50	167.17	5.15	5.13	3.09
5,927.00	11.83	217.62	5,915.77	-181.09	-2.35	170.62	3.17	3.16	-1.72
5,959.00	13.72	215.57	5,946.98	-186.78	-6.56	174.64	6.07	5.91	-6.41
5,989.00	15.71	211.28	5,976.00	-193.14	-10.74	179.31	7.56	6.63	-14.30
6,021.00	17.57	208.49	6,006.66	-201.09	-15.30	185.36	6.32	5.81	-8.72
6,052.00	18.21	207.33	6,036.16	-209.51	-19.75	191.89	2.36	2.06	-3.74
6,084.00	18.69	207.24	6,066.51	-218.51	-24.40	198.91	1.50	1.50	-0.28
6,116.00	20.59	210.07	6,096.65	-227.93	-29.56	206.16	6.64	5.94	8.84
6,148.00	22.67	210.20	6,126.39	-238.14	-35.48	213.90	6.50	6.50	0.41
6,180.00	24.84	209.10	6,155.68	-249.34	-41.86	222.44	6.92	6.78	-3.44
6,212.00	26.99	207.47	6,184.46	-261.66	-48.48	231.96	7.08	6.72	-5.09
6,244.00	29.89	206.85	6,212.60	-275.22	-55.43	242.55	9.11	9.06	-1.94
6,273.00	31.79	206.58	6,237.50	-288.50	-62.11	252.96	6.57	6.55	-0.93
6,304.00	32.67	207.31	6,263.72	-303.23	-69.60	264.48	3.10	2.84	2.35
6,334.00	32.70	207.59	6,288.97	-317.61	-77.07	275.68	0.51	0.10	0.93
6,364.00	35.08	208.15	6,313.87	-332.39	-84.89	287.14	8.00	7.93	1.87
6,395.00	37.02	208.51	6,338.93	-348.45	-93.55	299.54	6.30	6.26	1.16
6,425.00	39.49	207.27	6,362.49	-364.87	-102.23	312.27	8.62	8.23	-4.13
6,454.00	41.37	205.88	6,384.56	-381.69	-110.64	325.47	6.48	6.48	-4.79
6,484.00	44.14	205.23	6,406.59	-400.06	-119.42	340.02	9.35	9.23	-2.17
6,515.00	46.12	205.28	6,428.46	-419.93	-128.80	355.80	6.39	6.39	0.16
6,546.00	48.82	205.30	6,449.41	-440.58	-138.56	372.19	8.71	8.71	0.06

RECEIVED  
 Office of Oil and Gas  
 APR 28 2015  
 WV Department of  
 Environmental Protection  
 COMPASS 5001, Bldg 711  
 06/05/2015



# Scientific Drilling International

## Survey Report



<b>Company:</b>	Stone Energy Corporation	<b>Local Co-ordinate Reference:</b>	Well 2H
<b>Project:</b>	Heather Prospect (NAD 27)	<b>TVD Reference:</b>	GL 1215' & KB 18' @ 1233.00ft (Saxon 141)
<b>Site:</b>	Stone	<b>MD Reference:</b>	GL 1215' & KB 18' @ 1233.00ft (Saxon 141)
<b>Well:</b>	2H	<b>North Reference:</b>	Grid
<b>Wellbore:</b>	OH	<b>Survey Calculation Method:</b>	Minimum Curvature
<b>Design:</b>	2H As Drilled	<b>Database:</b>	Northeast District

### Survey

Measured Depth (ft)	Inclination (°)	Azimuth (°)	Vertical Depth (ft)	+N-S (ft)	+E-W (ft)	Vertical Section (ft)	Dogleg Rate (°/100usft)	Build Rate (°/100usft)	Turn Rate (°/100usft)
6,576.00	50.65	204.87	6,468.80	-461.32	-148.26	388.68	6.20	6.10	-1.43
6,607.00	53.70	205.14	6,487.81	-483.51	-158.61	406.33	9.86	9.84	0.87
6,637.00	55.35	203.88	6,505.22	-505.73	-168.74	424.10	6.48	5.50	-4.20
6,667.00	57.59	203.83	6,521.79	-528.60	-178.85	442.47	7.47	7.47	-0.17
6,697.00	58.93	203.82	6,537.57	-551.94	-189.16	461.23	4.47	4.47	-0.03
6,727.00	60.72	204.12	6,552.65	-575.64	-199.70	480.25	6.03	5.97	1.00
6,758.00	61.91	204.22	6,567.53	-600.45	-210.83	500.13	3.85	3.84	0.32
6,789.00	63.69	203.59	6,581.70	-625.66	-222.00	520.38	6.02	5.74	-2.03
6,819.00	64.85	203.44	6,594.72	-650.44	-232.78	540.35	3.89	3.87	-0.50
6,849.00	66.66	203.10	6,607.04	-675.57	-243.59	560.64	6.12	6.03	-1.13
6,879.00	68.93	202.11	6,618.38	-701.21	-254.26	581.45	8.16	7.57	-3.30
6,909.00	70.35	202.06	6,628.82	-727.27	-264.84	602.70	4.74	4.73	-0.17
6,940.00	71.20	201.05	6,639.02	-754.49	-275.59	624.99	4.12	2.74	-3.26
6,970.00	72.03	199.01	6,648.49	-781.24	-285.34	647.15	7.02	2.77	-6.80
7,000.00	72.36	197.12	6,657.66	-808.39	-294.20	669.99	6.10	1.10	-6.30
7,030.00	73.30	195.35	6,666.52	-835.91	-302.21	693.44	6.45	3.13	-5.90
7,061.00	73.84	193.65	6,675.29	-864.69	-309.65	718.28	5.54	1.74	-5.48
7,091.00	74.47	190.76	6,683.48	-892.90	-315.75	743.00	9.50	2.10	-9.63
7,121.00	74.84	188.05	6,691.42	-921.44	-320.48	768.48	8.80	1.23	-9.03
7,151.00	76.18	186.27	6,698.93	-950.25	-324.10	794.59	7.28	4.47	-5.93
7,181.00	76.81	184.25	6,705.93	-979.30	-326.77	821.21	6.88	2.10	-6.73
7,211.00	76.24	182.62	6,712.92	-1,008.42	-328.52	848.20	5.61	-1.90	-5.43
7,242.00	75.81	179.83	6,720.41	-1,038.49	-329.16	876.46	8.84	-1.39	-9.00
7,272.00	75.64	177.34	6,727.81	-1,067.56	-328.45	904.19	8.06	-0.57	-8.30
7,303.00	75.93	175.59	6,735.42	-1,097.55	-326.59	933.17	5.55	0.94	-5.65
7,335.00	75.47	173.98	6,743.33	-1,128.43	-323.77	963.31	5.08	-1.44	-5.03
7,367.00	76.19	172.32	6,751.16	-1,159.23	-320.07	993.65	5.51	2.25	-5.19
7,399.00	76.74	169.46	6,758.65	-1,189.95	-315.15	1,024.31	8.86	1.72	-8.94
7,431.00	78.18	166.44	6,765.60	-1,220.49	-308.62	1,055.33	10.25	4.50	-9.44
7,463.00	80.79	163.65	6,771.44	-1,250.88	-300.50	1,086.71	11.83	8.16	-8.72
7,494.00	83.41	162.43	6,775.70	-1,280.25	-291.55	1,117.40	9.31	8.45	-3.94
7,526.00	86.31	161.18	6,778.57	-1,310.52	-281.60	1,149.26	9.86	9.06	-3.91
7,558.00	87.52	160.74	6,780.29	-1,340.72	-271.17	1,181.21	4.02	3.78	-1.38
7,590.00	87.88	159.90	6,781.57	-1,370.83	-260.40	1,213.18	2.85	1.13	-2.63
7,622.00	88.36	160.28	6,782.62	-1,400.90	-249.51	1,245.16	1.91	1.50	1.19
7,654.00	87.92	158.75	6,783.66	-1,430.86	-238.32	1,277.13	4.97	-1.38	-4.78
7,717.00	87.75	157.35	6,786.04	-1,489.25	-214.79	1,339.99	2.24	0.27	-2.22
7,781.00	88.22	157.32	6,788.29	-1,548.27	-190.14	1,403.81	0.74	0.73	0.05
7,845.00	89.13	157.68	6,789.77	-1,607.38	-165.66	1,467.66	1.53	1.42	0.56
7,907.00	88.93	155.92	6,790.82	-1,664.36	-141.24	1,529.47	2.86	-0.32	-2.84
7,971.00	89.30	155.13	6,791.81	-1,722.60	-114.73	1,593.16	1.36	0.58	-1.23
8,035.00	89.63	154.64	6,792.41	-1,780.55	-87.56	1,656.77	0.92	0.52	-0.77
8,098.00	90.57	153.90	6,792.30	-1,837.30	-60.21	1,719.32	1.90	1.17	-1.17
8,162.00	90.30	151.92	6,791.81	-1,894.27	-31.07	1,782.65	3.12	-0.42	-0.03

RECEIVED  
Office of Oil and Gas  
APR 28 2015  
WV Department of  
Environmental Protection



Scientific Drilling International  
Survey Report



<b>Company:</b>	Stone Energy Corporation	<b>Local Co-ordinate Reference:</b>	Well 2H
<b>Project:</b>	Heather Prospect (NAD 27)	<b>TVD Reference:</b>	GL 1215' & KB 18' @ 1233.00ft (Saxon 141)
<b>Site:</b>	Stone	<b>MD Reference:</b>	GL 1215' & KB 18' @ 1233.00ft (Saxon 141)
<b>Well:</b>	2H	<b>North Reference:</b>	Grid
<b>Wellbore:</b>	OH	<b>Survey Calculation Method:</b>	Minimum Curvature
<b>Design:</b>	2H As Drilled	<b>Database:</b>	Northeast District

Measured Depth (ft)	Inclination (°)	Azimuth (°)	Vertical Depth (ft)	+N/-S (ft)	+E/-W (ft)	Vertical Section (ft)	Dogleg Rate (°/100usft)	Build Rate (°/100usft)	Turn Rate (°/100usft)
8,225.00	90.20	150.26	6,791.54	-1,949.42	-0.62	1,844.68	2.64	-0.16	-2.63
8,289.00	91.27	149.36	6,790.72	-2,004.73	31.57	1,907.42	2.18	1.67	-1.41
8,352.00	90.44	148.29	6,789.78	-2,058.63	64.17	1,968.96	2.15	-1.32	-1.70
8,415.00	88.93	148.04	6,790.12	-2,112.15	97.40	2,030.35	2.43	-2.40	-0.40
8,477.00	88.49	149.09	6,791.52	-2,165.04	129.73	2,090.84	1.84	-0.71	1.69
8,541.00	89.53	150.91	6,792.63	-2,220.45	161.72	2,153.62	3.27	1.63	2.84
8,604.00	89.90	150.22	6,792.94	-2,275.32	192.68	2,215.55	1.24	0.59	-1.10
8,667.00	90.60	149.67	6,792.66	-2,329.84	224.23	2,277.34	1.41	1.11	-0.87
8,731.00	90.77	149.42	6,791.90	-2,385.01	256.67	2,340.03	0.47	0.27	-0.39
8,794.00	90.70	152.82	6,791.09	-2,440.16	287.09	2,402.05	5.40	-0.11	5.40
8,858.00	92.61	156.14	6,789.24	-2,497.88	314.65	2,465.58	5.98	2.98	5.19
8,922.00	92.85	154.66	6,786.19	-2,556.01	341.26	2,529.19	2.34	0.38	-2.31
8,985.00	93.28	154.21	6,782.82	-2,612.76	368.41	2,591.66	0.99	0.68	-0.71
9,048.00	93.66	154.52	6,779.01	-2,669.45	395.61	2,654.11	0.78	0.60	0.49
9,111.00	91.61	154.08	6,776.12	-2,726.16	422.90	2,716.59	3.33	-3.25	-0.70
9,175.00	90.57	153.49	6,774.90	-2,783.56	451.17	2,780.05	1.87	-1.63	-0.92
9,239.00	90.17	152.63	6,774.48	-2,840.62	480.16	2,843.41	1.48	-0.63	-1.34
9,303.00	89.70	152.17	6,774.56	-2,897.33	509.81	2,906.66	1.03	-0.73	-0.72
9,366.00	90.27	152.13	6,774.57	-2,953.03	539.24	2,968.89	0.91	0.90	-0.06
9,430.00	91.01	151.60	6,773.86	-3,009.47	569.42	3,032.04	1.42	1.16	-0.83
9,493.00	90.13	152.26	6,773.23	-3,065.05	599.06	3,094.23	1.75	-1.40	1.05
9,557.00	89.40	151.57	6,773.49	-3,121.52	629.19	3,157.40	1.57	-1.14	-1.08
9,620.00	90.10	151.64	6,773.77	-3,176.94	659.15	3,219.52	1.12	1.11	0.11
9,684.00	89.93	152.44	6,773.75	-3,233.47	689.16	3,282.71	1.28	-0.27	1.25
9,748.00	90.03	153.24	6,773.78	-3,290.41	718.37	3,346.04	1.26	0.16	1.25
9,811.00	90.03	153.02	6,773.74	-3,346.61	746.85	3,408.43	0.35	0.00	-0.35
9,874.00	89.63	152.54	6,773.93	-3,402.63	775.66	3,470.75	0.99	-0.63	-0.76
9,937.00	89.90	151.70	6,774.19	-3,458.32	805.12	3,532.97	1.40	0.43	-1.33
10,001.00	90.47	151.21	6,773.98	-3,514.54	835.71	3,596.06	1.17	0.89	-0.77
10,065.00	91.24	151.29	6,773.03	-3,570.64	866.49	3,659.10	1.21	1.20	0.13
10,126.00	91.24	151.43	6,771.71	-3,624.16	895.72	3,719.19	0.23	0.00	0.23
10,190.00	89.87	151.00	6,771.09	-3,680.25	926.53	3,782.23	2.24	-2.14	-0.67
10,253.00	90.20	150.68	6,771.05	-3,735.27	957.23	3,844.21	0.73	0.52	-0.51
10,317.00	90.47	151.57	6,770.67	-3,791.31	988.13	3,907.23	1.45	0.42	1.39
10,380.00	90.91	151.46	6,769.91	-3,846.68	1,018.18	3,969.34	0.72	0.70	-0.17
10,443.00	90.54	151.87	6,769.12	-3,902.12	1,048.08	4,031.47	0.88	-0.59	0.65
10,506.00	90.03	152.45	6,768.80	-3,957.83	1,077.50	4,093.70	1.23	0.68	0.92
10,570.00	89.90	152.55	6,768.84	-4,014.60	1,107.05	4,156.97	0.26	-0.20	0.16
10,633.00	90.17	154.08	6,768.80	-4,070.89	1,135.34	4,219.38	0.43	0.43	2.43
10,697.00	90.50	155.08	6,768.43	-4,128.69	1,162.81	4,282.96	1.65	0.52	1.56
10,761.00	90.13	154.46	6,768.08	-4,186.58	1,190.09	4,346.56	1.13	0.58	-0.97
10,824.00	90.00	153.49	6,768.01	-4,243.19	1,217.73	4,409.06	1.55	-0.21	1.54
10,887.00	90.34	153.79	6,767.82	-4,299.64	1,245.70	4,471.52	0.72	0.51	0.48

RECEIVED  
Office of Oil and Gas  
APR 28 2015  
WV Department of Environmental Protection



Scientific Drilling International  
Survey Report



<b>Company:</b>	Stone Energy Corporation	<b>Local Co-ordinate Reference:</b>	Well 2H
<b>Project:</b>	Heather Prospect (NAD 27)	<b>TVD Reference:</b>	GL 1215' & KB 18' @ 1233.00ft (Saxon 141)
<b>Site:</b>	Stone	<b>MD Reference:</b>	GL 1215' & KB 18' @ 1233.00ft (Saxon 141)
<b>Well:</b>	2H	<b>North Reference:</b>	Grid
<b>Wellbore:</b>	OH	<b>Survey Calculation Method:</b>	Minimum Curvature
<b>Design:</b>	2H As Drilled	<b>Database:</b>	Northeast District

Measured Depth (ft)	Inclination (°)	Azimuth (°)	Vertical Depth (ft)	+N/-S (ft)	+E/-W (ft)	Vertical Section (ft)	Dogleg Rate (°/100usft)	Build Rate (°/100usft)	Turn Rate (°/100usft)
10,951.00	89.50	153.78	6,767.91	-4,357.06	1,273.98	4,534.99	1.31	-1.31	-0.02
11,015.00	89.43	154.26	6,768.51	-4,414.59	1,302.01	4,598.50	0.76	-0.11	0.75
11,078.00	90.30	153.95	6,768.66	-4,471.26	1,329.52	4,661.02	1.47	1.38	-0.49
11,142.00	90.70	154.45	6,768.10	-4,528.88	1,357.38	4,724.55	1.00	0.63	0.78
11,205.00	90.17	155.50	6,767.62	-4,585.96	1,384.03	4,787.18	1.87	-0.84	1.67
11,268.00	89.97	155.03	6,767.54	-4,643.18	1,410.39	4,849.85	0.81	-0.32	-0.75
11,332.00	89.19	154.82	6,768.01	-4,701.15	1,437.51	4,913.47	1.26	-1.22	-0.33
11,396.00	90.10	154.24	6,768.41	-4,758.93	1,465.03	4,977.04	1.69	1.42	-0.91
11,459.00	88.96	154.44	6,768.92	-4,815.71	1,492.31	5,039.59	1.84	-1.81	0.32
11,523.00	88.19	153.68	6,770.52	-4,873.25	1,520.30	5,103.08	1.69	-1.20	-1.19
11,586.00	88.99	154.05	6,772.07	-4,929.79	1,548.04	5,165.55	1.40	1.27	0.59
11,650.00	91.14	157.15	6,771.99	-4,988.06	1,574.47	5,229.24	5.89	3.36	4.84
11,714.00	91.17	156.71	6,770.70	-5,046.93	1,599.55	5,293.05	0.69	0.05	-0.69
11,777.00	91.01	155.28	6,769.50	-5,104.47	1,625.17	5,355.78	2.28	-0.25	-2.27
11,841.00	90.91	154.88	6,768.43	-5,162.50	1,652.13	5,419.42	0.64	-0.16	-0.63
11,905.00	90.20	154.47	6,767.81	-5,220.35	1,679.51	5,483.01	1.28	-1.11	-0.64
11,968.00	89.63	154.96	6,767.91	-5,277.31	1,706.42	5,545.61	1.19	-0.90	0.78
12,032.00	90.64	155.24	6,767.76	-5,335.36	1,733.36	5,609.25	1.64	1.58	0.44
12,095.00	90.57	153.96	6,767.09	-5,392.27	1,760.38	5,671.83	2.03	-0.11	-2.03
12,159.00	88.42	151.55	6,767.65	-5,449.16	1,789.68	5,735.14	5.05	-3.36	-3.77
12,223.00	87.79	151.58	6,769.77	-5,505.41	1,820.13	5,798.21	0.99	-0.98	0.05
12,286.00	88.69	151.86	6,771.71	-5,560.86	1,849.97	5,860.33	1.50	1.43	0.44
12,350.00	89.90	150.96	6,772.49	-5,617.05	1,880.59	5,923.40	2.36	1.89	-1.41
12,402.00	90.54	151.28	6,772.29	-5,662.58	1,905.71	5,974.60	1.38	1.23	0.62
<b>Last SDI MWD Survey</b>									
12,460.00	90.54	151.28	6,771.75	-5,713.44	1,933.57	6,031.74	0.00	0.00	0.00
<b>Projection to Bit</b>									

Measured Depth (ft)	Vertical Depth (ft)	Local Coordinates		Comment
		+N/-S (ft)	+E/-W (ft)	
15.00	15.00	0.00	0.00	Ground Level
100.00	99.99	1.25	0.20	First SDI Gyro Survey
3,311.02	3,307.17	-34.76	14.97	Last SDI Gyro Survey
3,430.00	3,425.02	-45.76	2.88	First SDI MWD Survey
12,402.00	6,772.29	-5,662.58	1,905.71	Last SDI MWD Survey
12,460.00	6,771.75	-5,713.44	1,933.57	Projection to Bit

RECEIVED  
Office of Oil and Gas

APR 2015

Checked By: \_\_\_\_\_ Approved By: \_\_\_\_\_

WV Department of  
Environmental Protection