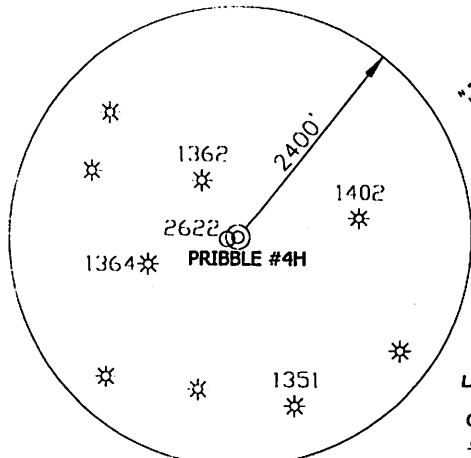


PRIBBLE #4H

NOTES ON SURVEY

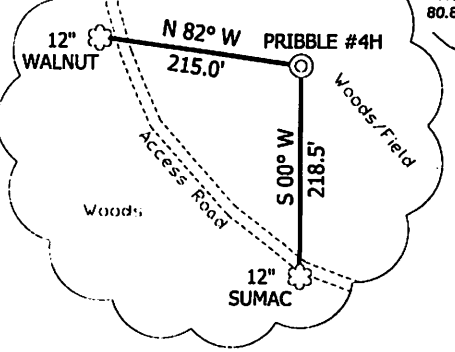
TIES TO WELLS AND CORNERS ARE BASED ON STATE PLANE GRID NORTH WV NORTH ZONE NAD '27. LEASE BOUNDARY SHOWN HEREON TAKEN FROM DEED BOOK 387 AT PAGE 74 AND INFORMATION PROVIDED BY STONE ENERGY CORPORATION. SURFACE OWNER AND ADJOINER INFORMATION TAKEN FROM THE ASSESSOR AND COUNTY CLERK RECORDS OF WETZEL COUNTY IN JUNE, 2012 AND INFORMATION PROVIDED BY STONE ENERGY CORPORATION. WELL LAT./LONG. ESTABLISHED BY SG-GPS(OPUS).



PRIBBLE #4H LANDING POINT STATE PLANE COORDINATES NORTH ZONE (N) 437781 (E) 1629557

REFERENCES

1" = 200'



PRIBBLE #4H LANDING POINT L & L DECIMAL 39.69451 80.81648

PRIBBLE #4H LANDING POINT UTM (NAD 83) 4393876 515750

CASTO 135.3 ACRES * MAP 6 PARCEL 13

47-103-01362

PRIBBLE #4H

18" SUGAR MAPLE

BONNELL 150 ACRES * MAP 6 PARCEL 32.1

PRIBBLE #4H STATE PLANE COORDINATES NORTH ZONE (N) 436542 (E) 1628548

PRIBBLE #4H L & L DECIMAL 39.69107 80.82000

PRIBBLE #4H UTM (NAD 83) 4393494 515449

HORNER 144.56 ACRES * MAP 6 PARCEL 23

PRIBBLE #4H BOTTOM HOLE STATE PLANE COORDINATES NORTH ZONE (N) 442738 (E) 1628073

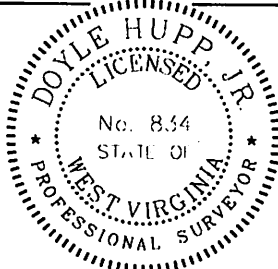
PRIBBLE #4H BOTTOM HOLE L & L DECIMAL 39.70806 80.82202

PRIBBLE #4H BOTTOM HOLE UTM (NAD 83) 4395379 515273

I, THE UNDERSIGNED, HEREBY CERTIFY THAT THIS PLAT IS CORRECT TO THE BEST OF MY KNOWLEDGE AND BELIEF AND SHOWS ALL THE INFORMATION REQUIRED BY LAW AND THE REGULATIONS ISSUED AND PRESCRIBED BY THE DIVISION OF ENVIRONMENTAL PROTECTION.

P.S. 8.54

 HUPP Surveying & Mapping
 P.O. Box 647 Grantsville, WV 26147
 (304) 354-7035 EMAIL: hupp@frontiernet.net



(+) DENOTES LOCATION OF WELL ON UNITED STATES TOPOGRAPHIC MAPS.

DATE AUGUST 25 2012
 OPERATORS WELL NO. PRIBBLE #4H
 API WELL NO. 47-103-02833H6A
 STATE COUNTY PERMIT

MINIMUM DEGREE OF ACCURACY 1/2500 FILE NO. W2007 (BK 48-38)
 PROVEN SOURCE OF ELEVATION SC-GPS (OPUS) SCALE 1" = 1000'

STATE OF WEST VIRGINIA
 DIVISION OF ENVIRONMENTAL PROTECTION
 OFFICE OF OIL AND GAS

WELL TYPE: OIL GAS LIQUID INJECTION WASTE DISPOSAL "GAS" PRODUCTION STORAGE DEEP SHALLOW

LOCATION: ELEVATION 1,337' WATERSHED PROCTOR CREEK DISTRICT PROCTOR COUNTY WETZEL QUADRANGLE NEW MARTINSVILLE 7.5'

SURFACE OWNER RAYMOND PRIBBLE ACREAGE 194.25
 LEGAL OWNER RAYMOND PRIBBLE, et al LEASE ACREAGE 409.18
 PROPOSED WORK: LEASE NO.

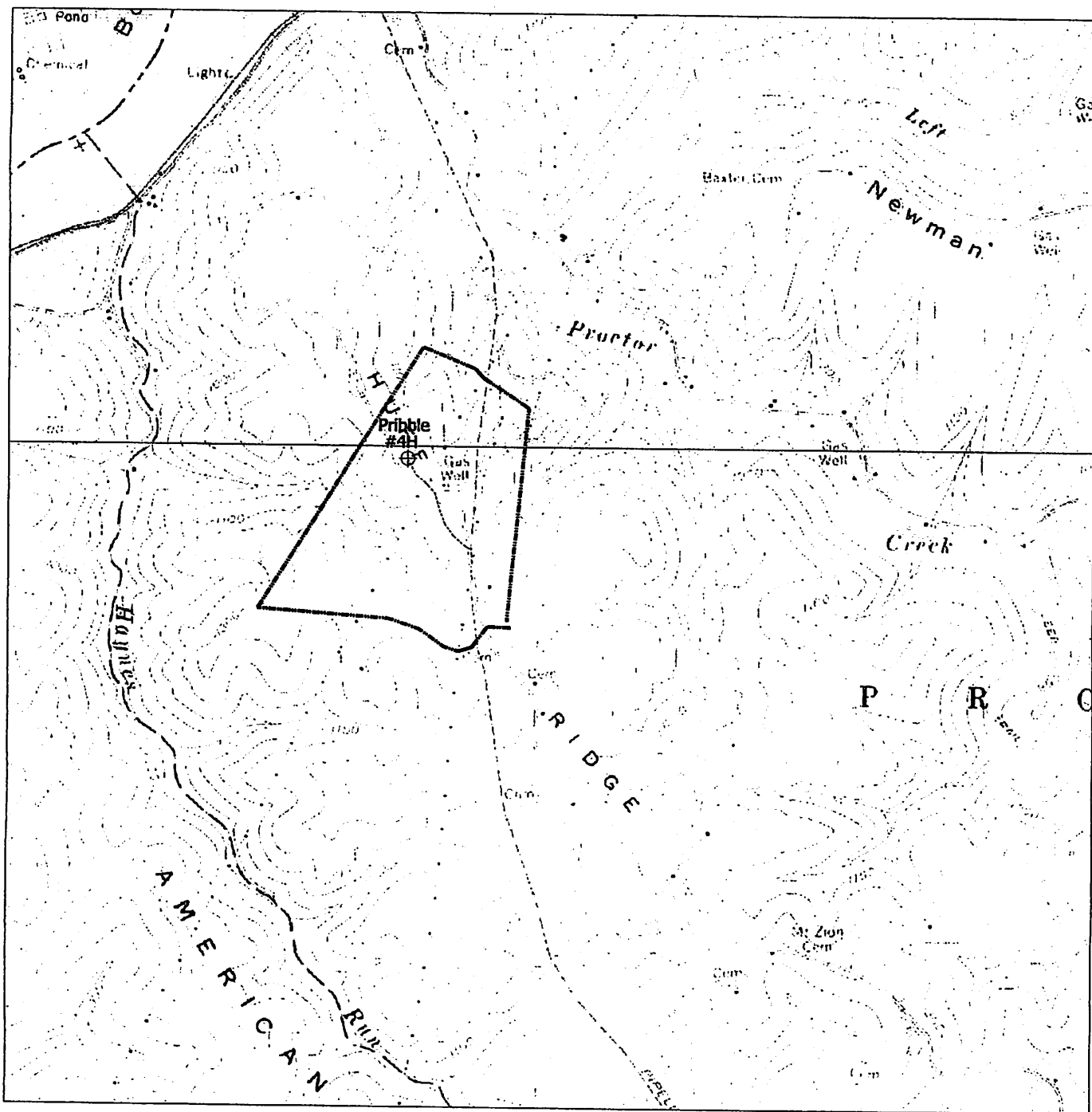
DRILL CONVERT DRILL DEEPER REDRILL FRACTURE OR STIMULATE PLUG OLD
 FORMATION PERFORATE NEW FORMATION PLUG AND ABANDON CLEAN OUT AND REPLUG OTHER
 PHYSICAL CHANGE IN WELL (SPECIFY) TARGET FORMATION MARCELLUS ESTIMATED DEPTH TVD 6,590' MD 13,000'

WELL OPERATOR STONE ENERGY CORPORATION DESIGNATED AGENT TIM MCGREGOR
 ADDRESS P.O. BOX 52807 LAFAYETTE, LA 70508 ADDRESS 6000 HAMPTON CENTER SUITE B MORGANTOWN WV 26603

11/23/2012

STONE ENERGY CORP.

PRIBBLE #4H



HUPP Surveying & Mapping

P.O. BOX 647 GRANTSVILLE, WV 26147
PH: (304)354-7035 E-MAIL: hupp@frontiernet.net

1" = 2000'
New Martinsville Quad

Stone Energy Corporation
P.O. Box 52807
Lafayette, LA 70508

DmH
9-6-12