

NOTES ON SURVEY

WELLS TO WELLS AND CORNERS ARE BASED ON STATE PLANE GRID NORTH WV NORTH ZONE NAD 27. PLASS BOUNDARY SHOWN HEREON TAKEN FROM DEED BOOK 253 AT PAGE 428 AND INFORMATION PROVIDED BY STONE ENERGY CORPORATION.

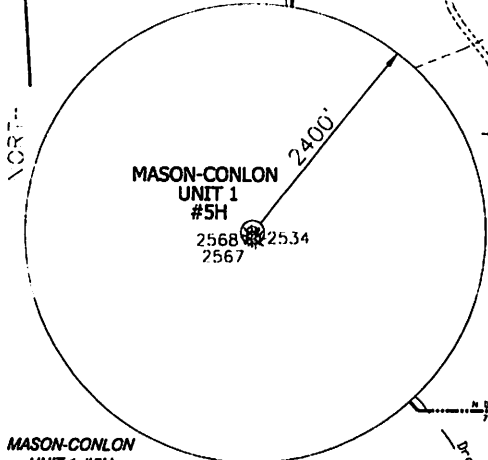
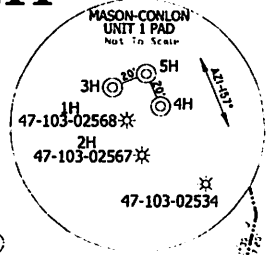
SURFACE OWNER AND ADJOINER INFORMATION TAKEN FROM THE ASSESSOR AND COUNTY CLERK RECORDS OF WEITZEL COUNTY IN JUNE, 2012 AND INFORMATION PROVIDED BY STONE ENERGY CORPORATION. WELL LAT./LONG. ESTABLISHED BY SG-GPS(OPUS). ORIGINAL PLAT DATE OF JULY 26, 2012.

MASON-CONLON UNIT 1 #5H BOTTOM HOLE STATE PLANE COORDINATES NORTH ZONE (N) 418310 (E) 1651957

MASON-CONLON UNIT 1 #5H BOTTOM HOLE L & L DECIMAL 39.04193 80.73594

MASON-CONLON UNIT 1 #5H BOTTOM HOLE UTM (NAD 83) 4388058 522673

MASON-CONLON UNIT 1 #5H



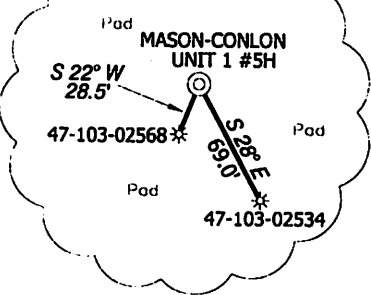
MASON-CONLON UNIT 1 #5H LANDING POINT STATE PLANE COORDINATES NORTH ZONE (N) 413236 (E) 1654534

MASON-CONLON UNIT 1 #5H LANDING POINT L & L DECIMAL 39.02810 80.72864

MASON-CONLON UNIT 1 #5H LANDING POINT UTM (NAD 83) 4388525 523484

REFERENCES

1" = 500'



MASON-CONLON UNIT 1 #5H STATE PLANE COORDINATES NORTH ZONE (N) 412687 (E) 1654465

MASON-CONLON UNIT 1 #5H L & L DECIMAL 39.02631 80.72675

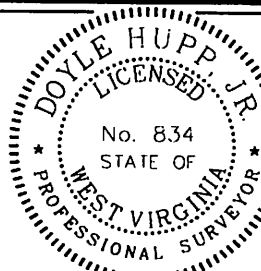
MASON-CONLON UNIT 1 #5H UTM (NAD 83) 4388327 523467

I, THE UNDERSIGNED, HEREBY CERTIFY THAT THIS PLAT IS CORRECT TO THE BEST OF MY KNOWLEDGE AND BELIEF AND SHOWS ALL THE INFORMATION REQUIRED BY LAW AND THE REGULATIONS ISSUED AND PRESCRIBED BY THE DIVISION OF ENVIRONMENTAL PROTECTION.

P.S. 8.34

Signature of Doyle Hupp, Jr.

HUPP Surveying & Mapping P.O. Box 647 Grantsville, WV 26147 (304) 354-7035 EMAIL: hupp@frontiernet.net



(+) DENOTES LOCATION OF WELL ON UNITED STATES TOPOGRAPHIC MAPS.

DATE DECEMBER 5, 2012

OPERATORS WELL NO. MASON-CONLON UNIT 1 #5H

API WELL NO. 47-103-2817 H6A STATE COUNTY PERM

MINIMUM DEGREE OF ACCURACY 1/2500 FILE NO. W1916 (BK 58-23) SCALE 1" = 1000' PROV'N SOURCE OF ELEVATION SG-GPS (OPUS)

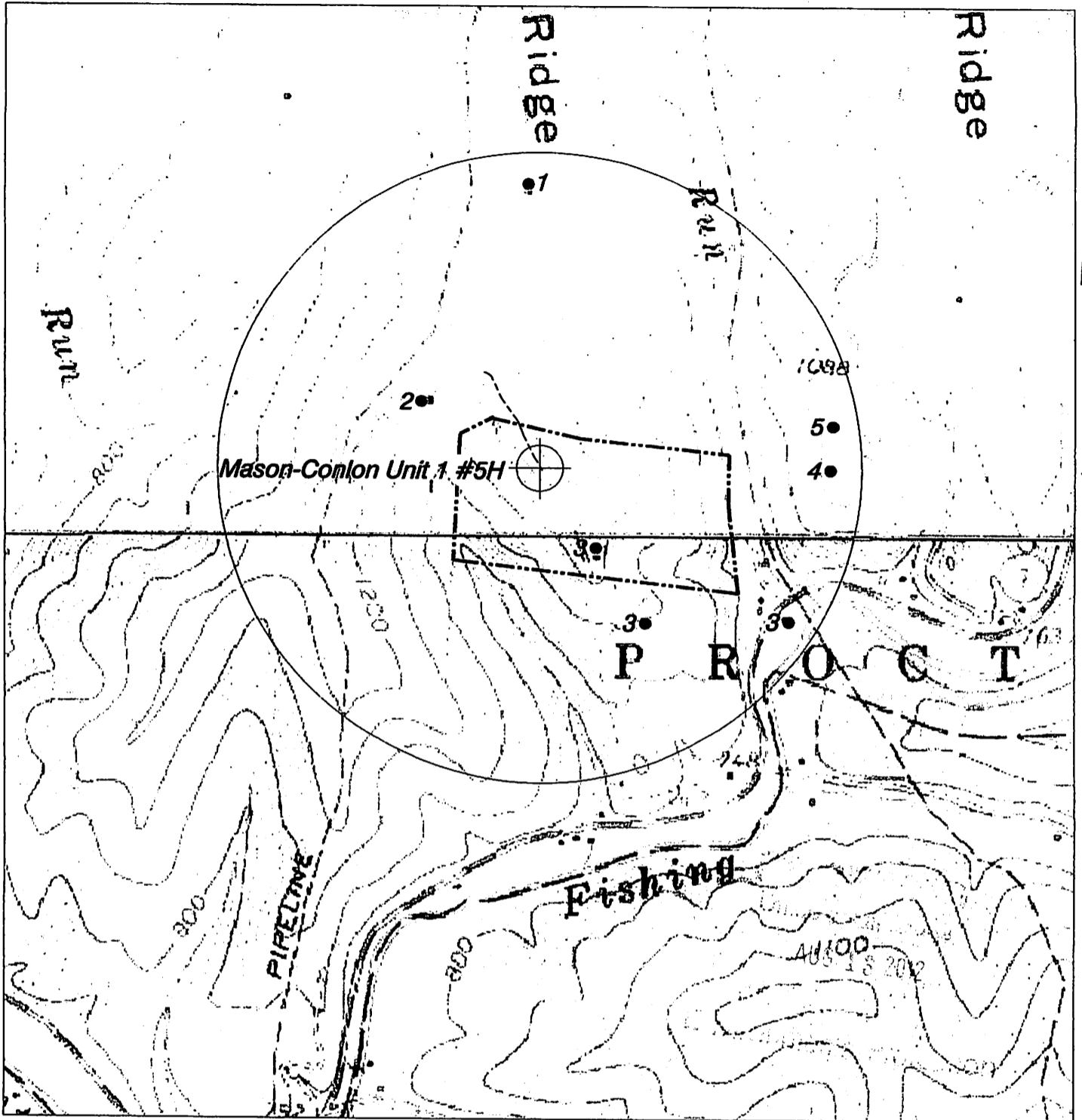
STATE OF WEST VIRGINIA DIVISION OF ENVIRONMENTAL PROTECTION OFFICE OF OIL AND GAS



WELL TYPE: OIL GAS X LIQUID INJECTION WASTE DISPOSAL IF "GAS" PRODUCTION X STORAGE DEEP SHALLOW X LOCATION: ELEVATION 1,202' WATERSHED PINE RUN OF LITTLE FISHING CREEK DISTRICT PROCTOR COUNTY WEITZEL QUADRANGLE WILLYVILLE 7.5' SURFACE OWNER JAMES ARNOLD GREATHOUSE ACREAGE 40.131 ROYALTY OWNER WELLS & GENELDA MASON, et al. LEASE ACRES 309.184 PROPOSED WORK: DRILL X CONVERT DRILL DEEPER REDRILL FRACTURE OR STIMULATE X PLUG OFF OLD FORMATION PERFORATE NEW FORMATION PLUG AND ABANDON CLEAN OUT AND REPLUG OTHER PHYSICAL CHANGE IN WELL (SPECIFY) TARGET FORMATION GENESE0 ESTIMATED DEPTH TVD 6,900' MD 13,000'

WELL OPERATOR STONE ENERGY CORPORATION DESIGNATED AGENT TIM MCGREGOR ADDRESS P.O. BOX 52807 LAFAYETTE, LA 70508 ADDRESS 6000 HAMPTON CENTER SUITE B MORGANTOWN WV 26605

MASON-CONLON UNIT 1 #5H WATER



DmH
8-10-12

<p>HUPP Surveying & Mapping P.O. BOX 647 GRANTSVILLE, WV 26147 PH: (304)354-7035 E-MAIL: hupp@frontiernet.net</p>	<p>1" = 1000' Wileyville Quad</p>	<p>Stone Energy Corporation P.O. Box 52807 Lafayette, LA 70508</p>
--	--	--