

WVDNR #1209

MILLS WETZEL #6H
(47-103-02722)
BOTTOM HOLE

MILLS WETZEL #4H
(47-103-02720)
BOTTOM HOLE

MILLS WETZEL #5H
(47-103-02721)
BOTTOM HOLE

WVDNR #1209
BOTTOM HOLE

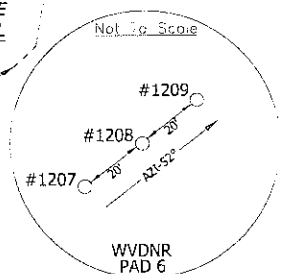
WVDNR #1209
BOTTOM HOLE
STATE PLANE
COORDINATES
NORTH ZONE
(N) 372391
(E) 1671697

WVDNR #1209
BOTTOM HOLE
L & L DECIMAL
39.51659
80.66377

WVDNR #1209
BOTTOM HOLE
UTM (NAD 83)
4374169
528917

LATITUDE 39°32'30"

LONGITUDE 80°37'50"



WVDNR #1209
LANDING POINT
STATE PLANE
COORDINATES
NORTH ZONE
(N) 369215
(E) 1673415

WVDNR #1209
LANDING POINT
L & L DECIMAL
39.50794
80.65750

WVDNR #1209
LANDING POINT
UTM (NAD 83)
4373210
529460

WV CONSERVATION COMMISSION
5104.5 ACRES±
MAP 21
PARCEL 3

WVDNR #1209
LANDING POINT

WVDNR #1209
STATE PLANE
COORDINATES
NORTH ZONE
(N) 368212
(E) 1673351

WVDNR #1209
L & L DECIMAL
39.50518
80.65768

WVDNR #1209
UTM (NAD 83)
4372904
529446

WV CONSERVATION COMMISSION
5104.5 ACRES±
MAP 21
PARCEL 3

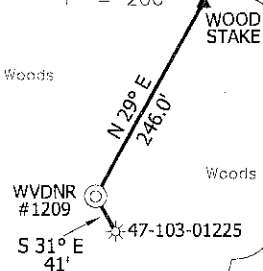
47-103-01284

WVDNR #1209

47-103-01225
S 31° E
41'

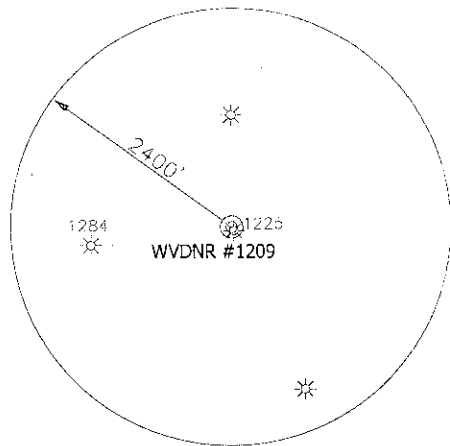
REFERENCES

1" = 200'

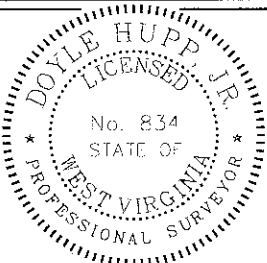


NOTES ON SURVEY

TIES TO WELLS AND CORNERS ARE BASED ON STATE PLANE GRID NORTH WV NORTH ZONE NAD 27. LEASE BOUNDARY SHOWN HEREON TAKEN FROM A TITLE EXAMINATION BY PATRICK N. RADOLIFF DATED NOVEMBER 7, 2009 AND INFORMATION PROVIDED BY TRIAD HUNTER, SURFACE OWNER AND ADJOINER. INFORMATION TAKEN FROM THE ASSESSOR AND COUNTY CLERK RECORDS OF WETZEL COUNTY IN DECEMBER, 2011 AND INFORMATION PROVIDED BY TRIAD HUNTER. WELL LAT./LONG. ESTABLISHED BY SC-GPS.



I, THE UNDERSIGNED, HEREBY CERTIFY THAT THIS PLAT IS CORRECT TO THE BEST OF MY KNOWLEDGE AND BELIEF AND SHOWS ALL THE INFORMATION REQUIRED BY LAW AND THE REGULATIONS ISSUED AND PRESCRIBED BY THE DIVISION OF ENVIRONMENTAL PROTECTION.



(+) DENOTES LOCATION OF WELL ON UNITED STATES TOPOGRAPHIC MAPS.

DATE MARCH 6 20 12

OPERATORS WELL NO. WVDNR #1209

AP: _____

WELL NO. 47-103-02783H64

STATE COUNTY PERMIT

P.S. 8.54

Doyle Hupp, Jr.
HUPP Surveying & Mapping
P.O. Box 647 Grantsville, WV 26147
(304) 354-7035 FAX: hupp@frontiernet.net

MINIMUM DEGREE OF ACCURACY 1/2500 FILE NO. W2102(BK53--66)
PROVEN SOURCE OF ELEVATION SC-GPS (OPUS) SCALE 1" = 1000'

STATE OF WEST VIRGINIA
DIVISION OF ENVIRONMENTAL PROTECTION
OFFICE OF OIL AND GAS



WELL TYPE: OIL GAS LIQUID INJECTION WASTE DISPOSAL IF "GAS" PRODUCTION STORAGE DEEP SHALLOW

LOCATION: ELEVATION 1,450' WATERSHED TRIBUTARY OF BUFFALO RUN
DISTRICT GRANT COUNTY WETZEL QUADRANGLE PINE GROVE 7.5'

SURFACE OWNER WEST VIRGINIA CONSERVATION COMMISSION ACREAGE 5104.5 ±
ROYALTY OWNER MILLS WETZEL LAND Inc. LEASE ACREAGE 5104.5 ±

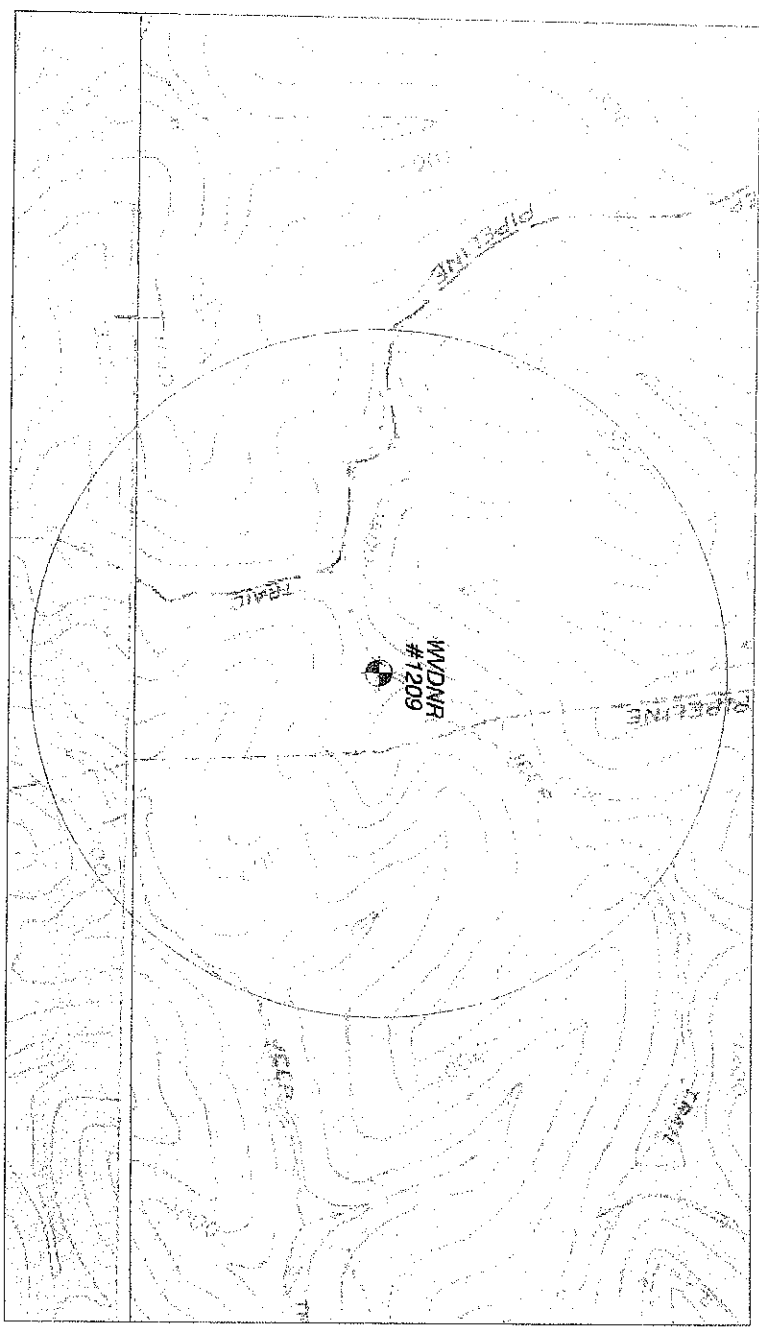
PROPOSED WORK: LEASE NO. _____

DRILL CONVERT DRILL DEEPER REDRILL FRACTURE OR STIMULATE PLUG OFF OLD FORMATION PERFORATE NEW FORMATION PLUG AND ABANDON CLEAN OUT AND REPLUG OTHER

PHYSICAL CHANGE IN WELL (SPECIFY) _____ TARGET FORMATION MARCELLUS
ESTIMATED DEPTH 7,470' TVD 11,780' MD


WELL OPERATOR TRIAD HUNTER, LLC. DESIGNATED AGENT KIMBERLY ARNOLD
ADDRESS 777 POST OAK BLVD., SUITE 910 HOUSTON, TX 77056 ADDRESS P.O. BOX 154 WAVERLY, WV 26184

TRIAD HUNTER, LLC. WVDNR #1209 WATER



There Appears To Be No Potable
Water Sources Within 2500'

JMH
6-12-12

HUPP Surveying & Mapping P.O. BOX 647 GRANTSVILLE, WV 26147 PH: (304) 351-7035 E-MAIL: hupp@roflerene.net	1" = 1000' Pine Grove Quad	Triad Hunter, LLC. 777 Post Oak Blvd, Suite 910 Houston, TX 77056	 # Proposed Well 2500' Water Sampling Radius Possible Water Sources
----------------------------------------------------------------------------------------------------------------------------	-------------------------------	-------------------------------------------------------------------------	-----------------------------------------------------------------------------------------------------------------------------------------------------------------------