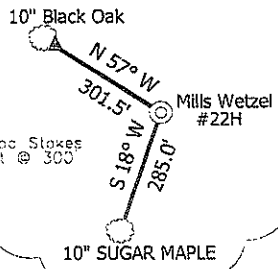
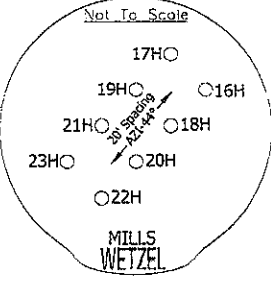


MILLS WETZEL #22H

REFERENCES
1" = 400'



WV CONSERVATION COMMISSION
5104.5 ACRES±
MAP #1
PARCEL 3



STONE WITH "X"

NOTES ON SURVEY

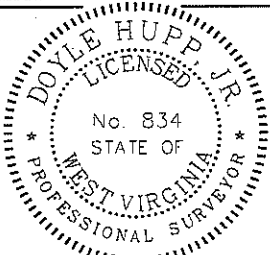
TIES TO WELLS AND CORNERS ARE BASED ON STATE PLANE GRID NORTH WV NORTH ZONE NAD '27.
 TIES TO REFERENCES ARE BASED ON MAGNETIC NORTH 10-20-11.
 LEASE BOUNDARY SHOWN HEREON TAKEN FROM A TITLE EXAMINATION BY PATRICK N. RADCLIFF DATED NOVEMBER 7, 2009 AND INFORMATION PROVIDED BY STONE ENERGY CORPORATION.
 SURFACE OWNER AND ADJOINER INFORMATION TAKEN FROM THE ASSESSOR AND COUNTY CLERK RECORDS OF WETZEL COUNTY IN SEPTEMBER, 2011 AND INFORMATION PROVIDED BY STONE ENERGY CORPORATION.
 WELL LAT./LONG. ESTABLISHED BY SG-GPS.

MILLS WETZEL #22H
 BOTTOM HOLE
 STATE PLANE COORDINATES
 NORTH ZONE (N) 363977
 (E) 1671274

MILLS WETZEL #22H
 BOTTOM HOLE
 L & L DECIMAL
 NORTH ZONE 39.49348
 80.66485

MILLS WETZEL #22H
 BOTTOM HOLE
 UTM (NAD 83)
 4371604
 528834

I, THE UNDERSIGNED, HEREBY CERTIFY THAT THIS PLAT IS CORRECT TO THE BEST OF MY KNOWLEDGE AND BELIEF AND SHOWS ALL THE INFORMATION REQUIRED BY LAW AND THE REGULATIONS ISSUED AND PRESCRIBED BY THE DIVISION OF ENVIRONMENTAL PROTECTION.



(+) DENOTES LOCATION OF WELL ON UNITED STATES TOPOGRAPHIC MAPS.

DATE NOVEMBER 4, 2011

OPERATORS WELL NO. MILLS WETZEL #22H

AP: _____
 WELL NO. 47 - 103 - 02763 H6A
 STATE COUNTY PERMIT

MINIMUM DEGREE OF ACCURACY 1/2500 FILE NO. W1719 (BK51-49)
 PROVEN SOURCE OF ELEVATION SG-GPS (OPUS) SCALE 1" = 1000'

STATE OF WEST VIRGINIA
 DIVISION OF ENVIRONMENTAL PROTECTION
 OFFICE OF OIL AND GAS

WELL TYPE: OIL GAS LIQUID INJECTION WASTE DISPOSAL IF "GAS" PRODUCTION STORAGE DEEP SHALLOW

LOCATION: ELEVATION 1335' WATERSHED TRIBUTARY OF PINEY FORK
 DISTRICT GREEN COUNTY WETZEL QUADRANGLE PINE GROVE 7.5'

SURFACE OWNER WEST VIRGINIA CONSERVATION COMMISSION ACREAGE 5104.5 ±
 ROYALTY OWNER MILLS WETZEL LAND Inc. LEASE ACREAGE 5104.5 ±

PROPOSED WORK: LEASE NO. _____
 DRILL CONVERT DRILL DEEPER REDRILL FRACTURE OR STIMULATE PLUG OFF OLD FORMATION

PERFORATE NEW FORMATION PLUG AND ABANDON CLEAN OUT AND REPLUG OTHER
 PHYSICAL CHANGE IN WELL (SPECIFY) _____ TARGET FORMATION MARCELLUS
 ESTIMATED DEPTH 7,370' TVD ±4,590' MD

WELL OPERATOR STONE ENERGY CORPORATION DESIGNATED AGENT TIM MCGREGOR
 ADDRESS P.O. BOX 52807 LAFAYETTE, LA 70508 ADDRESS 6000 HAMPTON CENTER SUITE B MORGANTOWN WV 26505

