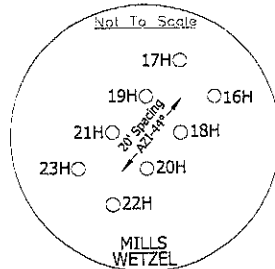


LONG. 80°40'22.9"

LATITUDE 39°32'30"

MILLS WETZEL #16H



MILLS WETZEL #16H
STATE PLANE COORDINATES NORTH ZONE
(N) 370004
(E) 1669041

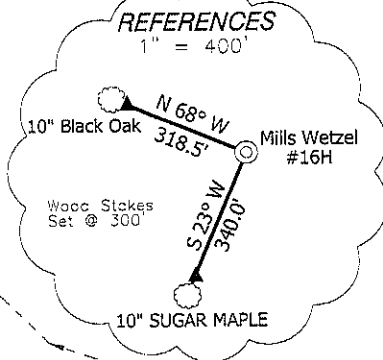
MILLS WETZEL #16H
L & L DECIMAL
39.50995
80.67304

MILLS WETZEL #16H
UTM (NAD 83)
4373428
528123

MILLS WETZEL #16H
LANDING POINT
STATE PLANE COORDINATES NORTH ZONE
(N) 369957
(E) 1669906

MILLS WETZEL #16H
LANDING POINT
L & L DECIMAL
39.50995
80.66997

MILLS WETZEL #16H
LANDING POINT
UTM (NAD 83)
4373418
528387



STONE WITH "X"

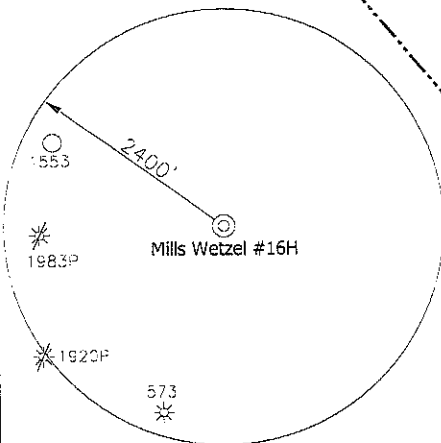
NOTES ON SURVEY

TIES TO WELLS AND CORNERS ARE BASED ON STATE PLANE GRID NORTH WV NORTH ZONE NAD '27.
TIES TO REFERENCES ARE BASED ON MAGNETIC NORTH 10-20-11.
LEASE BOUNDARY SHOWN HEREON TAKEN FROM A TITLE EXAMINATION BY PATRICK N. RADCLIFF DATED NOVEMBER 7, 2009 AND INFORMATION PROVIDED BY STONE ENERGY CORPORATION.
SURFACE OWNER AND ADJOINER INFORMATION TAKEN FROM THE ASSESSOR AND COUNTY CLERK RECORDS OF WETZEL COUNTY IN SEPTEMBER, 2011 AND INFORMATION PROVIDED BY STONE ENERGY CORPORATION.
WELL LAT./LONG. ESTABLISHED BY SG-GPS.

MILLS WETZEL #16H
BOTTOM HOLE
STATE PLANE COORDINATES NORTH ZONE
(N) 363725
(E) 1674173

MILLS WETZEL #16H
BOTTOM HOLE
L & L DECIMAL
39.49289
80.65456

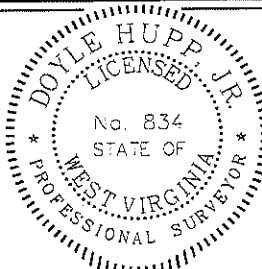
MILLS WETZEL #16H
BOTTOM HOLE
UTM (NAD 83)
4371542
529719



I, THE UNDERSIGNED, HEREBY CERTIFY THAT THIS PLAT IS CORRECT TO THE BEST OF MY KNOWLEDGE AND BELIEF AND SHOWS ALL THE INFORMATION REQUIRED BY LAW AND THE REGULATIONS ISSUED AND PRESCRIBED BY THE DIVISION OF ENVIRONMENTAL PROTECTION.

P.S. 834

HUPP Surveying & Mapping
P.O. Box 647 Grantsville, WV 26147
(304) 354-7035 EMAIL: hupp@frontiernet.net



(+) DENOTES LOCATION OF WELL ON UNITED STATES TOPOGRAPHIC MAPS.

DATE NOVEMBER 4, 2011
OPERATORS WELL NO. MILLS WETZEL #16H
API WELL NO. 47-103-02757H6A
STATE COUNTY PERMIT

MINIMUM DEGREE OF ACCURACY 1/2500 FILE NO. W1719 (BK51-49)
PROVEN SOURCE OF ELEVATION SG-GPS (OPUS) SCALE 1" = 1000'

STATE OF WEST VIRGINIA
DIVISION OF ENVIRONMENTAL PROTECTION
OFFICE OF OIL AND GAS



WELL TYPE: OIL GAS INJECTION WASTE DISPOSAL IF "GAS" PRODUCTION STORAGE DEEP SHALLOW

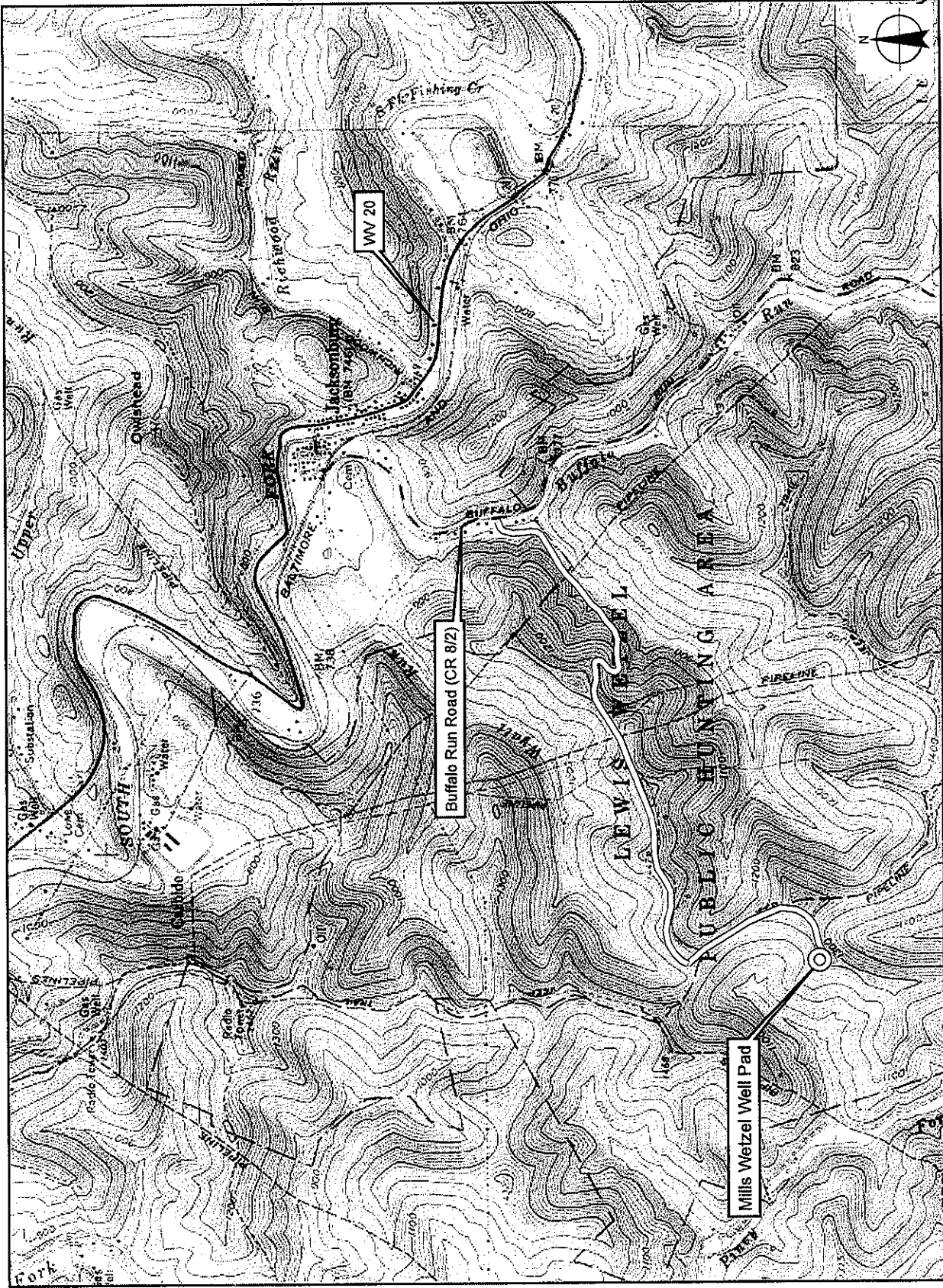
LOCATION: ELEVATION 1335' WATERSHED TRIBUTARY OF PINEY FORK
DISTRICT GREEN COUNTY WETZEL QUADRANGLE PINE GROVE 7.5'

SURFACE OWNER WEST VIRGINIA CONSERVATION COMMISSION ACREAGE 5104.5 ±
ROYALTY OWNER MILLS WETZEL LAND inc. LEASE ACREAGE 5104.5 ±
PROPOSED WORK: LEASE NO. _____
DRILL CONVERT DRILL DEEPER REDRILL FRACTURE OR STIMULATE PLUG OFF OLD FORMATION PERFORATE NEW FORMATION PLUG AND ABANDON CLEAN OUT AND REPLUG OTHER _____
PHYSICAL CHANGE IN WELL (SPECIFY) _____ TARGET FORMATION MARCELLUS
ESTIMATED DEPTH 7,370' TVD 15,790' MD

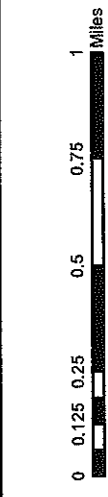
WELL OPERATOR STONE ENERGY CORPORATION DESIGNATED AGENT T.M. MCGREGOR
ADDRESS P.O. BOX 52807 LAFAYETTE, LA 70508 ADDRESS 6000 HAMPTON CENTER SUITE 300 MONROE, LA 70506

06/15/2012

Mills Wetzel Well Pad (Wells #16H - 23H)
Well Site Safety Plan
Well Pad Location With Access Road



Stone Energy Corporation
6000 Hampton Center, Suite B
Morgantown, WV 26505
(304) 225-1600



Base map: Pine Grove, WV USGS 7.5' topographic map
Big Run, WV USGS 7.5' topographic map
Date Printed: 11/9/2011