

SURFACE HOLE DECIMAL LONG: 80.54564
 SURVEYED LONG: 80° 32' 44.3" → 1.105'

LATITUDE 39° 42' 30"

**SHREVE-WATSON UNIT 6H
 K. SHREVE LEASE
 100.0 ACRES ±**

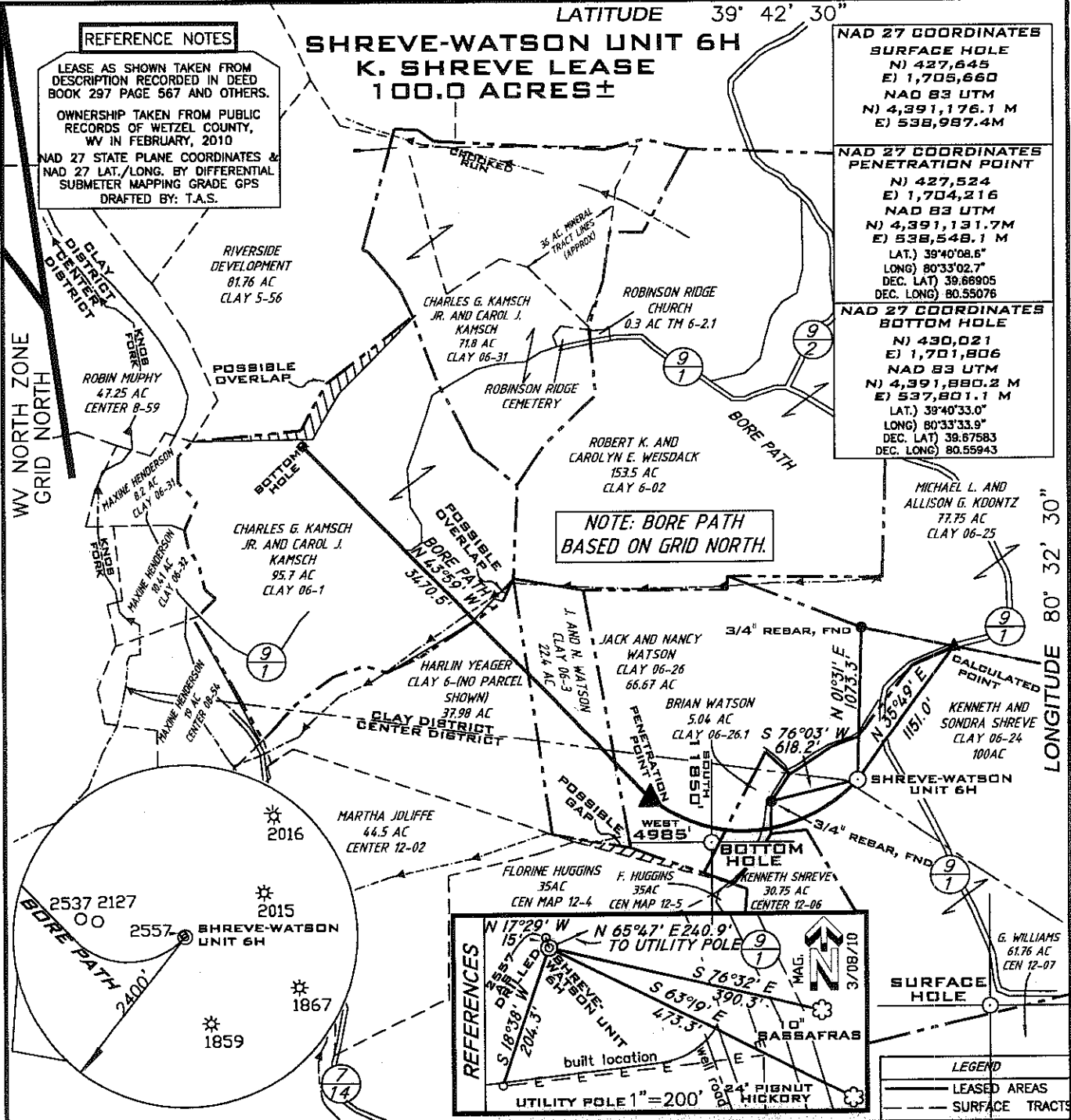
REFERENCE NOTES

LEASE AS SHOWN TAKEN FROM DESCRIPTION RECORDED IN DEED BOOK 297 PAGE 567 AND OTHERS.
 OWNERSHIP TAKEN FROM PUBLIC RECORDS OF WETZEL COUNTY, WV IN FEBRUARY, 2010
 NAD 27 STATE PLANE COORDINATES & NAD 27 LAT./LONG. BY DIFFERENTIAL SUBMETER MAPPING GRADE GPS
 DRAFTED BY: T.A.S.

NAD 27 COORDINATES SURFACE HOLE
 N) 427,645
 E) 1,705,660
NAD 83 UTM
 N) 4,391,176.1 M
 E) 538,987.4M

NAD 27 COORDINATES PENETRATION POINT
 N) 427,524
 E) 1,704,216
NAD 83 UTM
 N) 4,391,131.7M
 E) 538,548.1 M
 LAT.) 39°40'08.6"
 LONG) 80°33'02.7"
 DEC. LAT) 39.68905
 DEC. LONG) 80.55076

NAD 27 COORDINATES BOTTOM HOLE
 N) 430,021
 E) 1,701,806
NAD 83 UTM
 N) 4,391,880.2 M
 E) 537,801.1 M
 LAT.) 39°40'33.0"
 LONG) 80°33'33.9"
 DEC. LAT) 39.67583
 DEC. LONG) 80.55943

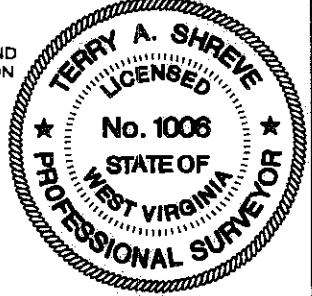
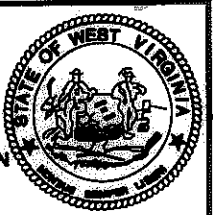


LONGITUDE 80° 32' 30"
 SURFACE HOLE SURVEYED LAT. 39° 40' 10.0"
 DECIMAL LAT. 39.66943

FILE NUMBER G100473(WB9-51)
 DRAWING NUMBER G100473WP6H.dwg
 SCALE 1" = 1000'
 MINIMUM DEGREE OF ACCURACY 1/200
 PROVEN SOURCE OF ELEVATION SUBMETER MAPPING
GRADE GPS

I THE UNDERSIGNED HEREBY CERTIFY THAT THIS PLAT IS CORRECT TO THE BEST OF MY KNOWLEDGE AND BELIEF AND SHOWS ALL THE INFORMATION REQUIRED BY LAW AND THE REGULATIONS ISSUED AND PRESCRIBED BY THE DEPARTMENT OF ENVIRONMENTAL PROTECTION

P.S. 1006
Terry A. Shreve



**STATE OF WEST VIRGINIA
 DIVISION OF ENVIRONMENTAL PROTECTION
 OFFICE OF OIL AND GAS**

DATE: OCTOBER 24, 2011

OPERATORS WELL NO. SHREVE-WATSON
 UNIT 6H

API WELL NO. 47-103-02756 H
 STATE WV

WELL TYPE: OIL GAS LIQUID INJECTION WASTE DISPOSAL
 (IF "GAS") PRODUCTION STORAGE DEEP SHALLOW

LOCATION ELEVATION 1471' WATERSHED KNOB FORK AND LISTON HOLLOW
 DISTRICT CLAY COUNTY CLAY

QUADRANGLE LITTLETON 7.5' SECTION NUMBER 14

SURFACE OWNER KENNETH AND SONDR A SHREVE ACRES 100 ±
 OIL & GAS ROYALTY OWNER KENNETH AND SONDR A SHREVE et al LEASE ACREAGE 22.4, 37.15, 95.7

PROPOSED WORK: DRILL CONVERT DRILL DEEPER REDRILL FRACTURE OR STIMULATE PLUG OFF OLD FORMATION
 PERFORATE NEW FORMATION OTHER PHYSICAL CHANGE (SPECIFY) _____

TARGET FORMATION MARCELLUS ESTIMATED DEPTH 7650' + Horizontal Leg
 PLUG & ABANDON CLEAN OUT & REPLUG

WELL OPERATOR GRENADIER ENERGY PARTNERS, LLC. DESIGNATED AGENT SHARON BARTH - CT CORPORATION
 ADDRESS 1610 WOODSTEAD CT. SUITE 330 THE WOODLANDS, TEXAS 77380 ADDRESS 707 VIRGINIA STREET EAST 15TH FLOOR CHARLESTON, WV 25301

COUNTY NAME PERMIT

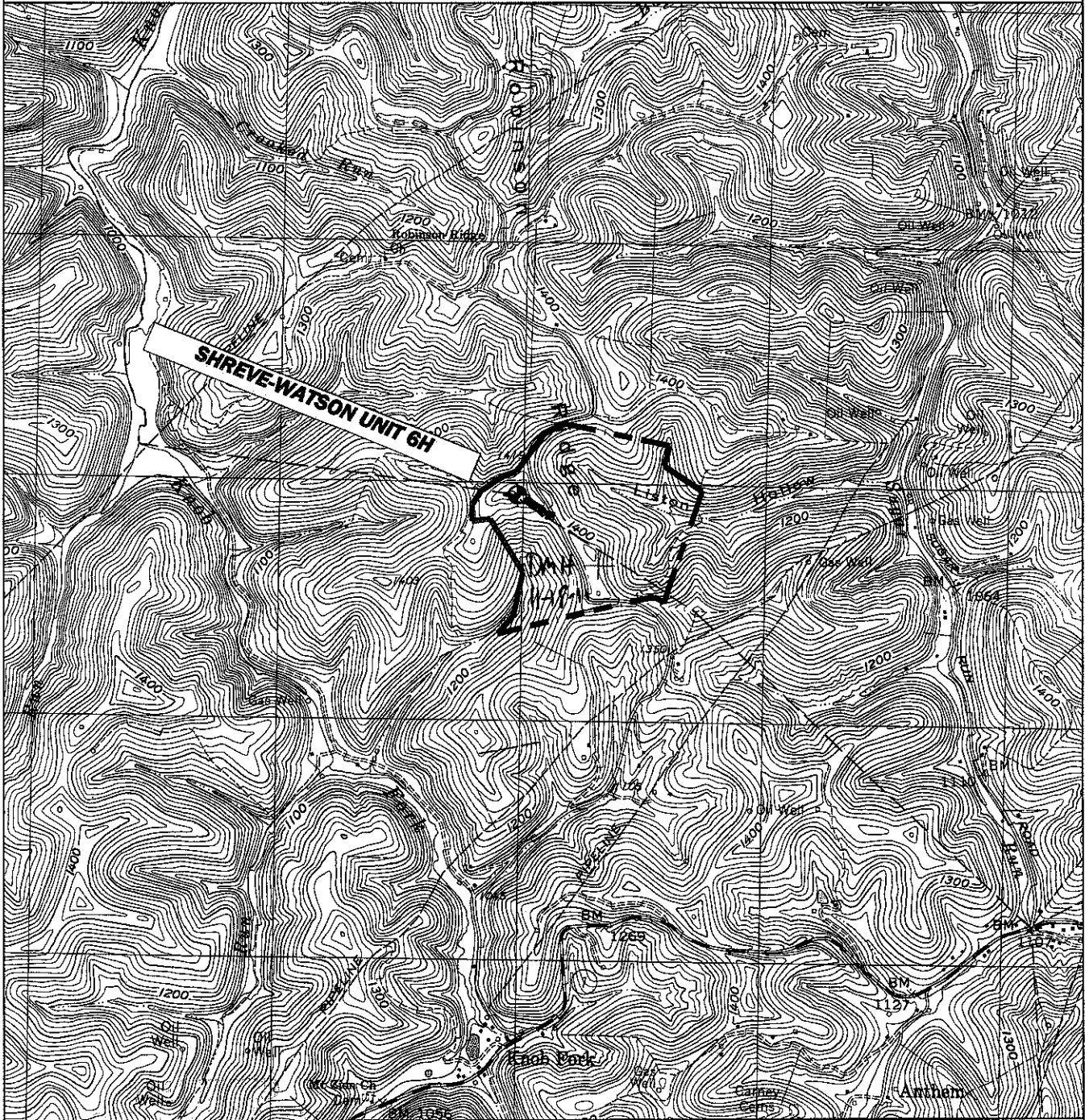
08/10/2012

103-027564

WW9

SHREVE-WATSON UNIT 6H

PAGE OF



PREPARED BY: ANGLE RIGHT LAND SURVEYING, LLC PO BOX 881 GRANTSVILLE, WV 26147 (304) 854-0085	OPERATOR GRENADIER ENERGY PARTNERS, LLC. 1610 WOODSTEAD CT. SUITE 330 THE WOODLAND, TEXAS 77380	TOPO SECTION LITTLETON 7.5' SCALE: 1"=2000'	WELL NAME SHREVE-WATSON UNIT 6H DATE: 10/26/11
G100473			