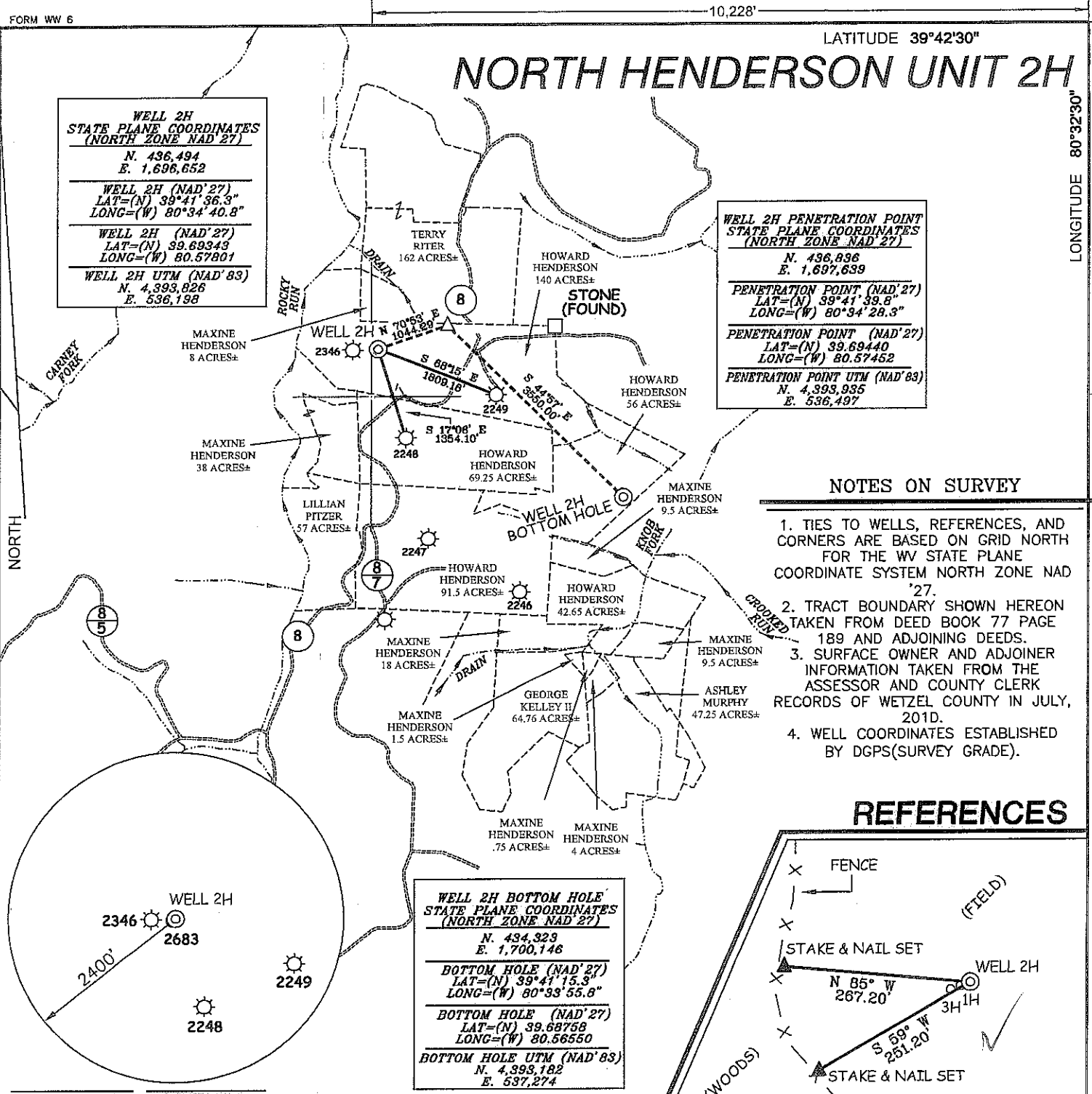


NORTH HENDERSON UNIT 2H

WELL 2H
STATE PLANE COORDINATES
(NORTH ZONE NAD '27)
 N. 436,494
 E. 1,696,652
WELL 2H (NAD'27)
 LAT=(N) 39°41'36.3"
 LONG=(W) 80°34'40.8"
WELL 2H (NAD'27)
 LAT=(N) 39.69343
 LONG=(W) 80.57801
WELL 2H UTM (NAD'83)
 N. 4,393,826
 E. 536,198

WELL 2H PENETRATION POINT
STATE PLANE COORDINATES
(NORTH ZONE NAD '27)
 N. 436,836
 E. 1,697,639
PENETRATION POINT (NAD'27)
 LAT=(N) 39°41'39.8"
 LONG=(W) 80°34'28.3"
PENETRATION POINT (NAD'27)
 LAT=(N) 39.69440
 LONG=(W) 80.57452
PENETRATION POINT UTM (NAD'83)
 N. 4,393,935
 E. 536,497

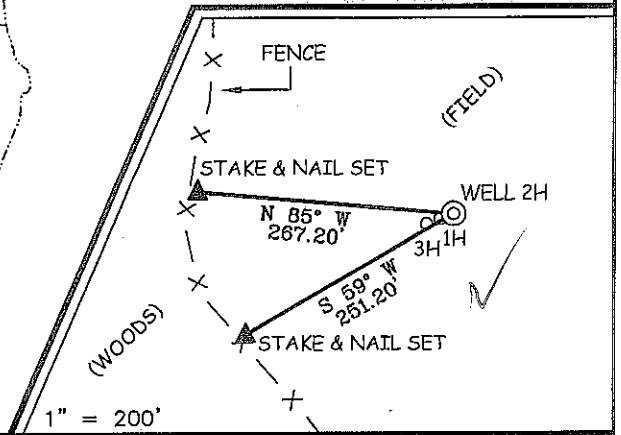
NORTH



NOTES ON SURVEY

1. TIES TO WELLS, REFERENCES, AND CORNERS ARE BASED ON GRID NORTH FOR THE WV STATE PLANE COORDINATE SYSTEM NORTH ZONE NAD '27.
2. TRACT BOUNDARY SHOWN HEREON TAKEN FROM DEED BOOK 77 PAGE 189 AND ADJOINING DEEDS.
3. SURFACE OWNER AND ADJOINER INFORMATION TAKEN FROM THE ASSESSOR AND COUNTY CLERK RECORDS OF WETZEL COUNTY IN JULY, 2010.
4. WELL COORDINATES ESTABLISHED BY DGPS(SURVEY GRADE).

REFERENCES



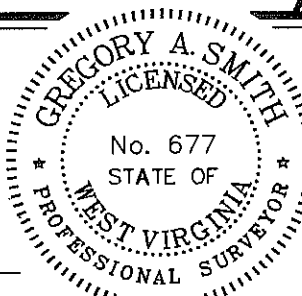
WELL 2H BOTTOM HOLE
STATE PLANE COORDINATES
(NORTH ZONE NAD '27)
 N. 434,323
 E. 1,700,146
BOTTOM HOLE (NAD'27)
 LAT=(N) 39°41'15.3"
 LONG=(W) 80°33'55.8"
BOTTOM HOLE (NAD'27)
 LAT=(N) 39.68758
 LONG=(W) 80.56550
BOTTOM HOLE UTM (NAD'83)
 N. 4,393,182
 E. 537,274



I THE UNDERSIGNED, HEREBY CERTIFY THAT THIS PLAT IS CORRECT TO THE BEST OF MY KNOWLEDGE AND BELIEF AND SHOWS ALL THE INFORMATION REQUIRED BY LAW AND THE REGULATIONS ISSUED AND PRESCRIBED BY THE DIVISION OF ENVIRONMENTAL PROTECTION.

P.S. 677

Gregory A. Smith



(+) DENOTES LOCATION OF WELL ON UNITED STATES TOPOGRAPHIC MAPS.
 DATE AUGUST 29, 20 11
 OPERATORS WELL NO. NORTH HENDERSON UNIT 2H
 API WELL NO. 47-103-02749
 STATE COUNTY PERMIT

MINIMUM DEGREE OF ACCURACY 1/200 FILE NO. 7578P2H(343-49)
 PROVEN SOURCE OF ELEVATION DGPS (SUBMETER MAPPING GRADE) SCALE 1" = 2,000'

STATE OF WEST VIRGINIA
 DIVISION OF ENVIRONMENTAL PROTECTION
 OFFICE OF OIL AND GAS



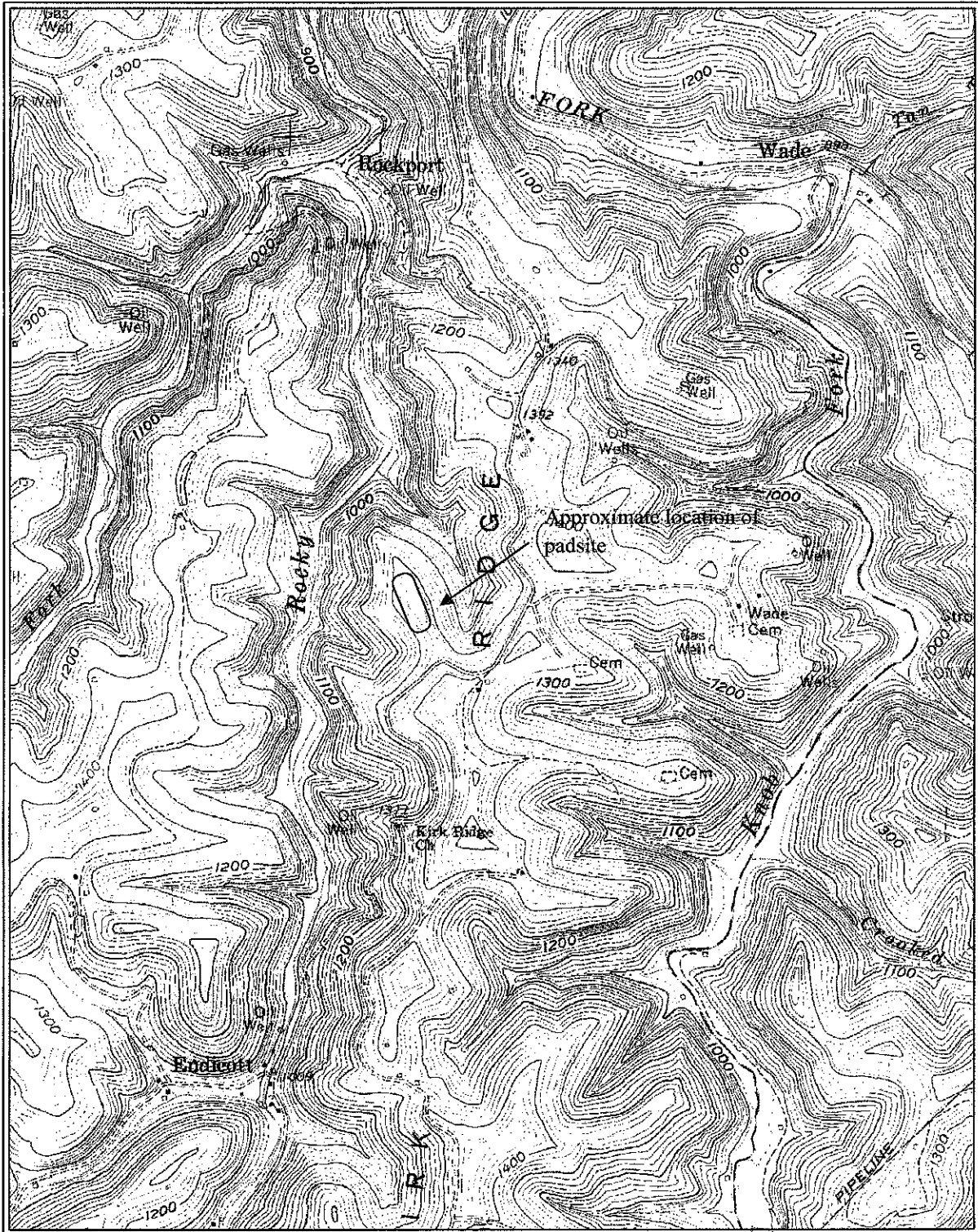
WELL TYPE: OIL GAS LIQUID INJECTION WASTE DISPOSAL IF "GAS" PRODUCTION DEEP SHALLOW
 LOCATION: ELEVATION 1356' WATERSHED ROCKY RUN
 DISTRICT CENTER COUNTY WETZEL QUADRANGLE LITTLETON 7.5'
 SURFACE OWNER HOWARD HENDERSON ACREAGE 140±
 ROYALTY OWNER MAXINE HENDERSON ET AL LEASE ACREAGE 140, 162, 69.25, & 56±
 PROPOSED WORK: LEASE NO.
 DRILL CONVERT DRILL DEEPER REDRILL FRACTURE OR STIMULATE PLUG OFF OLD FORMATION
 PERFORATE NEW FORMATION PLUG AND ABANDON CLEAN OUT AND REPLUG OTHER
 PHYSICAL CHANGE IN WELL (SPECIFY) TARGET FORMATION MARCELLUS
 ESTIMATED DEPTH 7,597' HORIZONTAL LEG

WELL OPERATOR GRENADIER ENERGY PARTNERS, LLC DESIGNATED AGENT SHARON BARTH-CT CORP.
 ADDRESS 1610 WOODSTEAD COURT, SUITE 330 ADDRESS 707 VIRGINIA ST. EAST 15TH FL.
THE WOODLANDS, TX 77380 CHARLESTON, WV 25301

COUNTY NAME

PERMIT

Pad Site Topo Map



PETRA 10/19/2011 4:47:10 PM

RECEIVED
Office of Oil & Gas
JUL 19 2012
WV Department of
Environmental Protection