

MILLS WETZEL #6H

MILLS WETZEL #6H
 STATE PLANE COORDINATES NORTH ZONE
 (N) 376454
 (E) 1668883

MILLS WETZEL #6H
 L & L DECIMAL
 39.52765
 80.67389

MILLS WETZEL #6H
 UTM (NAD 83)
 4375393
 528042

MILLS WETZEL #6H
 LANDING POINT STATE PLANE COORDINATES NORTH ZONE
 (N) 375974
 (E) 1669295

MILLS WETZEL #6H
 LANDING POINT L & L DECIMAL
 39.52634
 80.67241

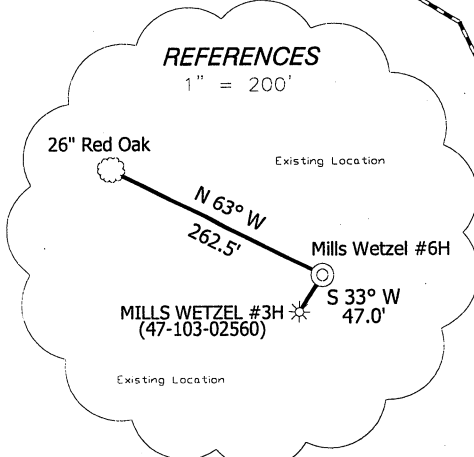
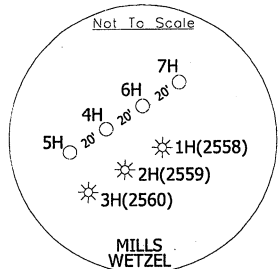
MILLS WETZEL #6H
 LANDING POINT UTM (NAD 83)
 4375249
 528170

MILLS WETZEL #6H
 BOTTOM HOLE UTM (NAD 83)
 4374219
 528883

MILLS WETZEL #6H
 BOTTOM HOLE STATE PLANE COORDINATES NORTH ZONE
 (N) 372557
 (E) 1671576

MILLS WETZEL #6H
 BOTTOM HOLE L & L DECIMAL
 39.51704
 80.66417

WV CONSERVATION COMMISSION
 5104.5 ACRES±
 MAP 21
 PARCEL 3



NOTES ON SURVEY

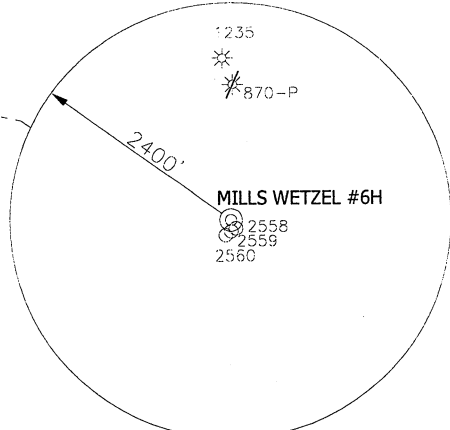
TIES TO WELLS AND CORNERS ARE BASED ON STATE PLANE GRID NORTH WV NORTH ZONE NAD '27.

TIES TO REFERENCES ARE BASED ON MAGNETIC NORTH 07-25-11.

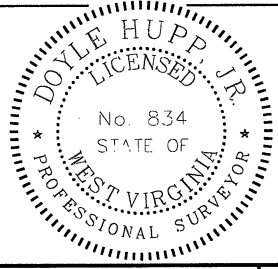
LEASE BOUNDARY SHOWN HEREON TAKEN FROM A TITLE EXAMINATION BY PATRICK N. RADCLIFF DATED NOVEMBER 7, 2009 AND INFORMATION PROVIDED BY STONE ENERGY CORPORATION.

SURFACE OWNER AND ADJOINER INFORMATION TAKEN FROM THE ASSESSOR AND COUNTY CLERK RECORDS OF WETZEL COUNTY IN MARCH, 2011 AND INFORMATION PROVIDED BY STONE ENERGY CORPORATION.

WELL LAT./LONG. ESTABLISHED BY SG-GPS. PLAT ORIGINAL DATE OF AUGUST 5, 2011.



I, THE UNDERSIGNED, HEREBY CERTIFY THAT THIS PLAT IS CORRECT TO THE BEST OF MY KNOWLEDGE AND BELIEF AND SHOWS ALL THE INFORMATION REQUIRED BY LAW AND THE REGULATIONS ISSUED AND PRESCRIBED BY THE DIVISION OF ENVIRONMENTAL PROTECTION.



P.S. 834
 HUPP Surveying & Mapping
 P.O. Box 647 Grantsville, WV 26147
 (304) 354-7035 EMAIL: hupp@frontiernet.net

(+) DENOTES LOCATION OF WELL ON UNITED STATES TOPOGRAPHIC MAPS.
 DATE OCTOBER 7, 20 11
 OPERATORS WELL NO. MILLS WETZEL #6H
 API WELL NO. 47-103-02725H
 STATE COUNTY PERMIT

MINIMUM DEGREE OF ACCURACY 1/2500 FILE NO. W1719 (BK57-48)
 PROVEN SOURCE OF ELEVATION SG-GPS (OPUS) SCALE 1" = 1000'

STATE OF WEST VIRGINIA
 DIVISION OF ENVIRONMENTAL PROTECTION
 OFFICE OF OIL AND GAS

WELL TYPE : OIL GAS LIQUID INJECTION WASTE DISPOSAL IF "GAS" PRODUCTION STORAGE DEEP SHALLOW

LOCATION :
 ELEVATION 1331' WATERSHED TRIBUTARY OF WYATT RUN
 DISTRICT GRANT COUNTY WETZEL QUADRANGLE PINE GROVE 7.5'

SURFACE OWNER WEST VIRGINIA CONSERVATION COMMISSION ACREAGE 5104.5 ±
 ROYALTY OWNER MILLS WETZEL LAND Inc. LEASE ACREAGE 5104.5±

PROPOSED WORK :
 DRILL CONVERT DRILL DEEPER REDRILL FRACTURE OR STIMULATE PLUG OFF OLD FORMATION PERFORATE NEW FORMATION PLUG AND ABANDON CLEAN OUT AND REPLUG OTHER

PHYSICAL CHANGE IN WELL (SPECIFY) _____ TARGET FORMATION MARCELLUS
 ESTIMATED DEPTH 7,350' TVD 12,350' MD

WELL OPERATOR STONE ENERGY CORPORATION DESIGNATED AGENT TIM MCGREGOR
 ADDRESS P.O. BOX 52807 LAFAYETTE, LA 70508 ADDRESS 6000 HAMPTON CENTER SUITE B MORGANTOWN WV 26505

Well Site Safety Plan
Location for Proposed Mills-Wetzel #4H, 5H, 6H, and 7H wells



STONE ENERGY

Stone Energy Corporation
6000 Hampton Center, Suite B
Morgantown, WV 26505
(304) 225-1600

Base map: Pine Grove, WV USGS 7.5' topographic map
Date Printed: 10/5/2011

DKS 10-13-11

D4H
10-13-11

0 600 1,200 2,400 3,600 4,800 Feet