

MILLS WETZEL #11H REVISED

MILLS WETZEL #11H
BOTTOM HOLE
STATE PLANE
COORDINATES
NORTH ZONE
(N) 377802
(E) 1671681

MILLS WETZEL #11H
BOTTOM HOLE
UTM (NAD 83)
4375726
528890

MILLS WETZEL #11H
BOTTOM HOLE
L & L DECIMAL
39.53062
80.68402

MCDUFFITT PIPE, INC.
233 ACRES±

MILLS WETZEL #11H
BOTTOM HOLE

MILLS WETZEL #11H
LANDING POINT
STATE PLANE
COORDINATES
NORTH ZONE
(N) 374565
(E) 1673174

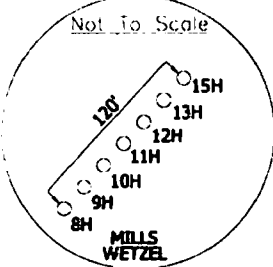
MILLS WETZEL #11H
LANDING POINT
L & L DECIMAL
39.52261
80.65860

WHEELING JESUIT UNIVERSITY
221 OF 420.3 ACRES±

MILLS WETZEL #11H
LANDING POINT
UTM (NAD 83)
4374839
529359

WHEELING JESUIT UNIVERSITY
77 OF 420.3 ACRES±

WHEELING JESUIT UNIVERSITY
60 OF 420.3 ACRES±



MILLS WETZEL #11H
STATE PLANE
COORDINATES
NORTH ZONE
(N) 374007
(E) 1673389

MILLS WETZEL #11H
L & L DECIMAL
39.52110
80.65707

MILLS WETZEL #11H
UTM (NAD 83)
4374871
529492

MILLS WETZEL #11H
LANDING POINT

MILLS WETZEL #11H

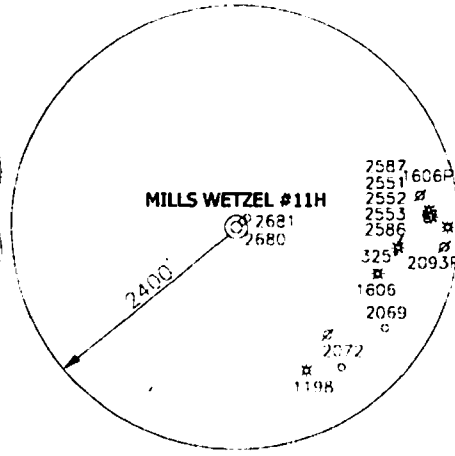
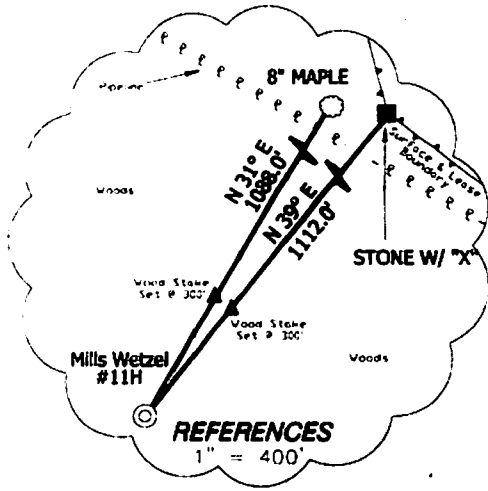
WV CONSERVATION COMMISSION
5104.5 ACRES±

STONE W/ "X"

STONE W/ "X"

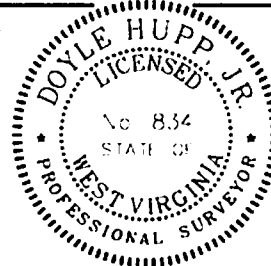
NOTES ON SURVEY

TIES TO WELLS AND CORNERS ARE BASED ON STATE PLANE GRID NORTH WV NORTH ZONE NAD '27. LEASE BOUNDARY SHOWN HEREON TAKEN FROM A TITLE EXAMINATION BY PATRICK N. RADCLIFF DATED NOVEMBER 7, 2009 AND INFORMATION PROVIDED BY STONE ENERGY CORPORATION. SURFACE OWNER AND ADJOINER INFORMATION TAKEN FROM THE ASSESSOR AND COUNTY CLERK RECORDS OF WETZEL COUNTY IN JANUARY, 2011 AND INFORMATION PROVIDED BY STONE ENERGY CORPORATION. WELL LAT./LONG. ESTABLISHED BY SG-GPS. ORIGINAL PLAT DATE OF MAY 31, 2011.



I, THE UNDERSIGNED, HEREBY CERTIFY THAT THIS PLAT IS CORRECT TO THE BEST OF MY KNOWLEDGE AND BELIEF AND SHOWS ALL THE INFORMATION REQUIRED BY LAW AND THE REGULATIONS ISSUED AND PRESCRIBED BY THE DIVISION OF ENVIRONMENTAL PROTECTION

P.S. 834
Doyle Hupp Jr.
HUPP Surveying & Mapping
P.O. Box 647 Grantsville, WV 26147
(304) 354-7035 EMAIL hupp@frontiernet.net



(+) DENOTES LOCATION OF WELL ON UNITED STATES TOPOGRAPHIC MAPS.

DATE OCTOBER 20 20 11
OPERATORS WELL NO. MILLS WETZEL #11H
REVISED
API WELL NO. 47-103-02707H
STATE COUNTY PERMIT

MINIMUM DEGREE OF ACCURACY 1/2500 FILE NO. W1719 (BK49-38)
PROVEN SOURCE OF ELEVATION SG-GPS (OPUS) SCALE 1" = 1000'

STATE OF WEST VIRGINIA
DIVISION OF ENVIRONMENTAL PROTECTION
OFFICE OF OIL AND GAS

WELL TYPE: OIL GAS LIQUID INJECTION WASTE DISPOSAL IF "GAS" PRODUCTION STORAGE DEEP SHALLOW
LOCATION: ELEVATION 1352' WATERSHED BUFFALO RUN
DISTRICT GRANT COUNTY WETZEL QUADRANGLE PINE GROVE 7.5'
SURFACE OWNER WEST VIRGINIA CONSERVATION COMMISSION ACREAGE 5104.5 ±
ROYALTY OWNER MILLS WETZEL LAND Inc. LEASE ACREAGE 5104.5±
PROPOSED WORK: DRILL CONVERT DRILL DEEPER REDRILL FRACTURE OR STIMULATE PLUG OFF OLD FORMATION PERFORATE NEW FORMATION PLUG AND ABANDON CLEAN OUT AND REPLUG OTHER
PHYSICAL CHANGE IN WELL (SPECIFY) _____ TARGET FORMATION MARCELLUS
ESTIMATED DEPTH TVD 7,270' MD 12,200'

WELL OPERATOR STONE ENERGY CORPORATION DESIGNATED AGENT TIM MCGREGOR
ADDRESS P.O. BOX 52807 LAFAYETTE, LA 70508 ADDRESS 6000 HAMPTON CENTER SUITE B MORGANTOWN WV 26505