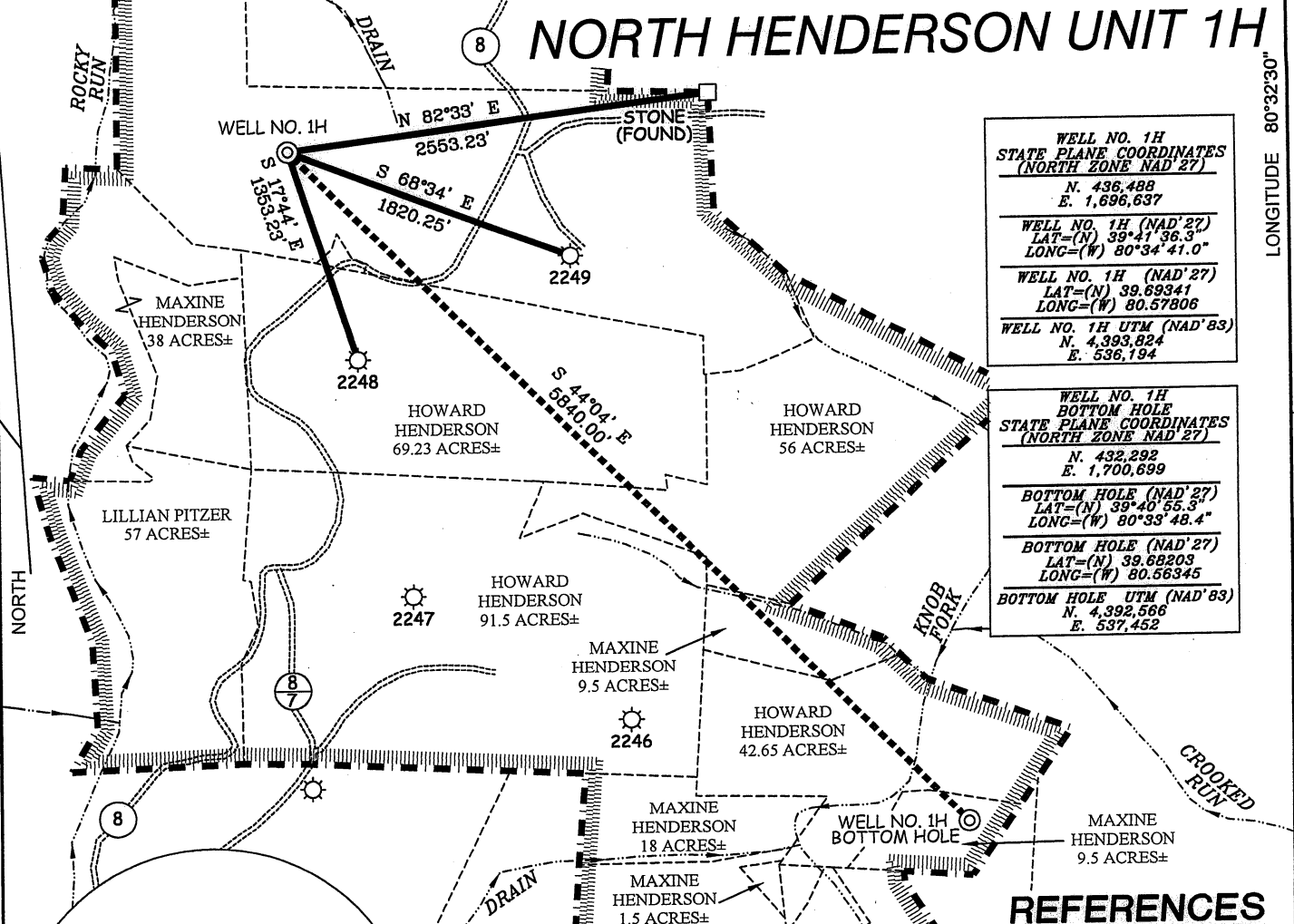


# NORTH HENDERSON UNIT 1H



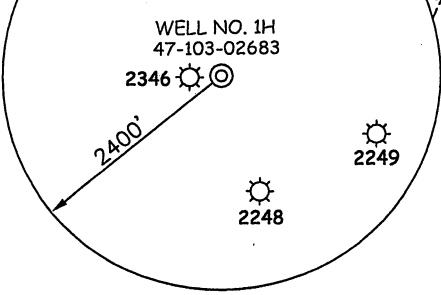
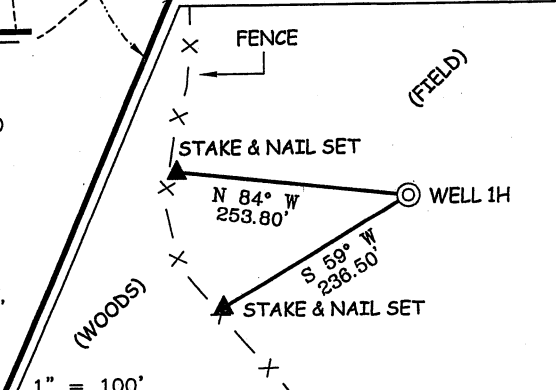
<b>WELL NO. 1H</b>	
STATE PLANE COORDINATES (NORTH ZONE NAD '27)	
N.	436,488
E.	1,696,637
WELL NO. 1H (NAD '27)	
LAT=(N)	39°41'36.3"
LONG=(W)	80°34'41.0"
WELL NO. 1H (NAD '27)	
LAT=(N)	39.69341
LONG=(W)	80.57806
WELL NO. 1H UTM (NAD '83)	
N.	4,393,824
E.	536,194

<b>WELL NO. 1H</b>	
BOTTOM HOLE	
STATE PLANE COORDINATES (NORTH ZONE NAD '27)	
N.	432,292
E.	1,700,699
BOTTOM HOLE (NAD '27)	
LAT=(N)	39°40'55.3"
LONG=(W)	80°33'48.4"
BOTTOM HOLE (NAD '27)	
LAT=(N)	39.68203
LONG=(W)	80.56345
BOTTOM HOLE UTM (NAD '83)	
N.	4,392,566
E.	537,452

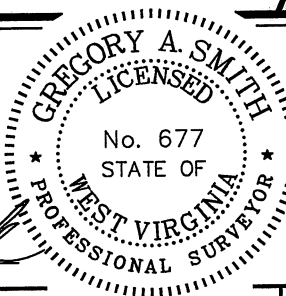
### NOTES ON SURVEY

1. TIES TO WELLS, REFERENCES, AND CORNERS ARE BASED ON GRID NORTH FOR THE WV STATE PLANE COORDINATE SYSTEM NORTH ZONE NAD '27.
2. LEASE BOUNDARY SHOWN HEREON TAKEN FROM DEED BOOK 77 PAGE 189 AND ADJOINING DEEDS.
3. SURFACE OWNER AND ADJOINER INFORMATION TAKEN FROM THE ASSESSOR AND COUNTY CLERK RECORDS OF WETZEL COUNTY IN JULY, 2010.
4. WELL COORDINATES ESTABLISHED BY DGPS(SURVEY GRADE).

### REFERENCES



I THE UNDERSIGNED, HEREBY CERTIFY THAT THIS PLAT IS CORRECT TO THE BEST OF MY KNOWLEDGE AND BELIEF AND SHOWS ALL THE INFORMATION REQUIRED BY LAW AND THE REGULATIONS ISSUED AND PRESCRIBED BY THE DIVISION OF ENVIRONMENTAL PROTECTION.



(+) DENOTES LOCATION OF WELL ON UNITED STATES TOPOGRAPHIC MAPS.  
 DATE SEPTEMBER 15, 20 11  
 OPERATORS WELL NO. NORTH HENDERSON UNIT 1H  
 API WELL NO. 47 - 103 - 02683  
 STATE COUNTY PERMIT

MINIMUM DEGREE OF ACCURACY 1/200 FILE NO. 7578P1H(343-49)  
 PROVEN SOURCE OF ELEVATION DGPS (SUBMETER MAPPING GRADE) SCALE 1" = 1,000'

STATE OF WEST VIRGINIA  
 DIVISION OF ENVIRONMENTAL PROTECTION  
 OFFICE OF OIL AND GAS



WELL TYPE: OIL  GAS  INJECTION  WASTE DISPOSAL  IF "GAS" PRODUCTION  STORAGE  DEEP  SHALLOW

LOCATION: ELEVATION 1356' WATERSHED ROCKY RUN  
 DISTRICT CENTER COUNTY WETZEL QUADRANGLE LITTLETON 7.5'

SURFACE OWNER HOWARD HENDERSON ACREAGE 140±  
 ROYALTY OWNER MAXINE HENDERSON ET AL LEASE ACREAGE 140, 69.23, 56, 91.5, 9.5, 42.65, & 9.5±

PROPOSED WORK: DRILL  CONVERT  DRILL DEEPER  REDRILL  FRACTURE OR STIMULATE  PLUG OFF OLD FORMATION  PERFORATE NEW FORMATION  PLUG AND ABANDON  CLEAN OUT AND REPLUG  OTHER

PHYSICAL CHANGE IN WELL (SPECIFY) \_\_\_\_\_ TARGET FORMATION MARCELLUS  
 ESTIMATED DEPTH 7,597' + HORIZONTAL LEG

WELL OPERATOR GRENADEER ENERGY PARTNERS, LLC DESIGNATED AGENT SHARON BARTH-CT CORP.  
 ADDRESS 1610 WOODSTEAD COURT, SUITE 330 THE WOODLANDS, TX 77380 ADDRESS 707 VIRGINIA ST. EAST 15TH FL. CHARLESTON, WV 25301

COUNTY NAME PERMIT