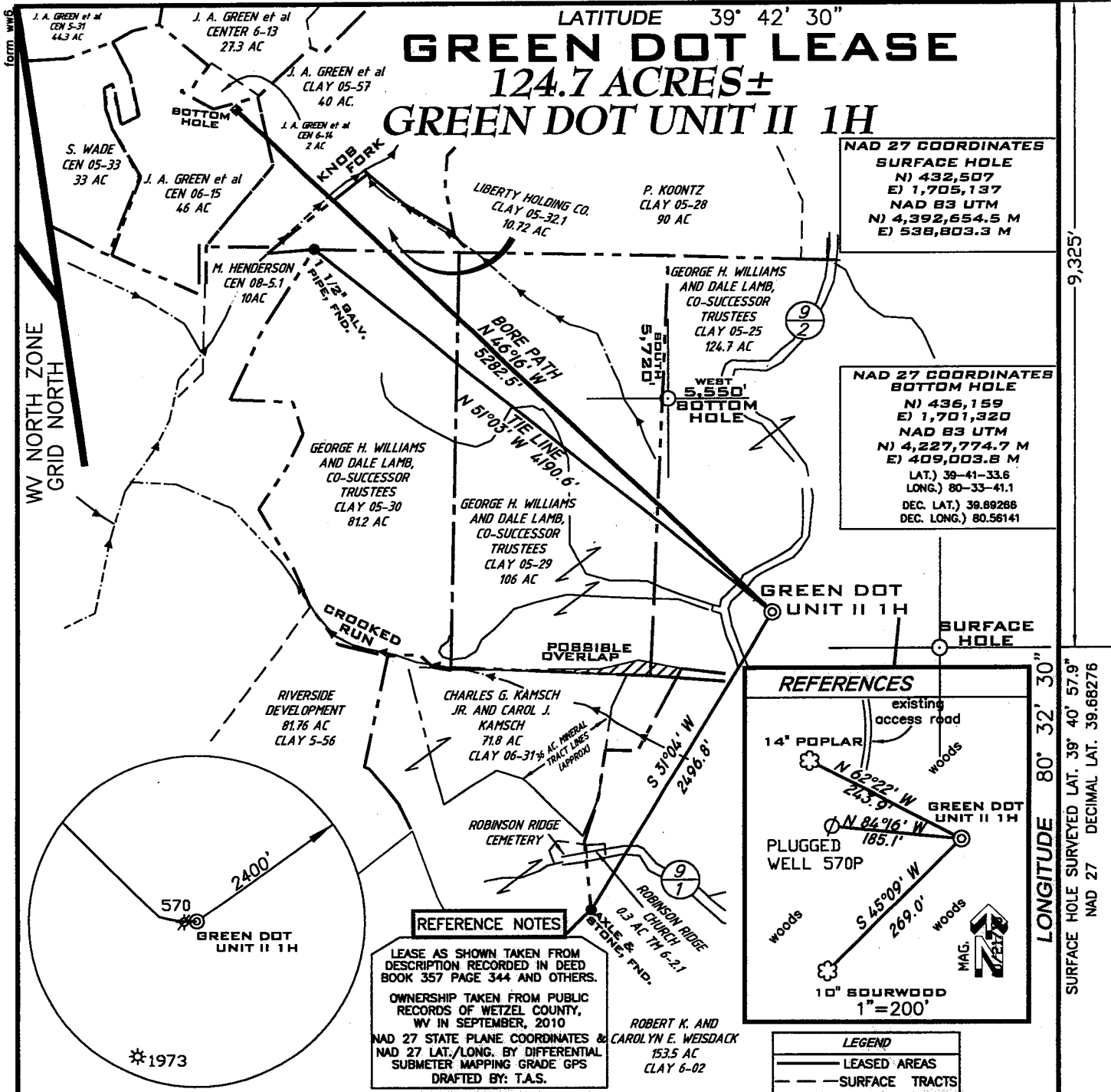


DECIMAL LONG: 80.54770
NAD27 80° 32' 51.7" — 1,685'

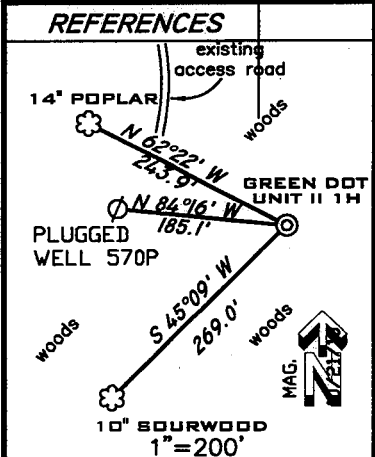
LATITUDE 39° 42' 30"

GREEN DOT LEASE 124.7 ACRES± GREEN DOT UNIT II 1H



NAD 27 COORDINATES SURFACE HOLE
N) 432,507
E) 1,705,137
NAD 83 UTM
N) 4,392,654.5 M
E) 538,803.3 M

NAD 27 COORDINATES BOTTOM HOLE
N) 436,159
E) 1,701,320
NAD 83 UTM
N) 4,227,774.7 M
E) 409,003.8 M
LAT.) 39-41-33.6
LONG.) 80-33-41.1
DEC. LAT.) 39.69268
DEC. LONG.) 80.56141



REFERENCE NOTES
LEASE AS SHOWN TAKEN FROM DESCRIPTION RECORDED IN DEED BOOK 357 PAGE 344 AND OTHERS.
OWNERSHIP TAKEN FROM PUBLIC RECORDS OF WETZEL COUNTY, WV IN SEPTEMBER, 2010
NAD 27 STATE PLANE COORDINATES & CAROLYN E. WEISDACK 153.5 AC CLAY 6-02
DRAFTED BY: T.A.S.

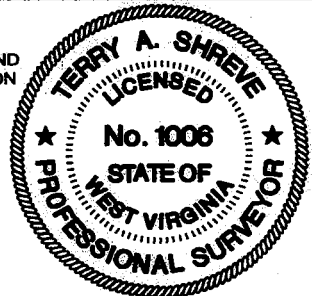
LEGEND
— LEASED AREAS
- - - SURFACE TRACTS

LONGITUDE 80° 32' 30"
SURFACE HOLE SURVEYED LAT. 39° 40' 57.9"
NAD 27 DECIMAL LAT. 39.68276

FILE NUMBER G100488(WB9-59)
DRAWING NUMBER G100488WP_1HREV831.dwg
SCALE 1" = 1000'
MINIMUM DEGREE OF ACCURACY 1/200
PROVEN SOURCE OF ELEVATION SUB METER MAPPING GRADE GPS

I THE UNDERSIGNED HEREBY CERTIFY THAT THIS PLAT IS CORRECT TO THE BEST OF MY KNOWLEDGE AND BELIEF AND SHOWS ALL THE INFORMATION REQUIRED BY LAW AND THE REGULATIONS ISSUED AND PRESCRIBED BY THE DEPARTMENT OF ENVIRONMENTAL PROTECTION

P.S. 1006
Terry A. Shreve



**STATE OF WEST VIRGINIA
DIVISION OF ENVIRONMENTAL PROTECTION
OFFICE OF OIL AND GAS**

REV. DATE: DECEMBER 5, 2011
DATE: APRIL 4, 2011
OPERATORS WELL NO. GREEN DOT UNIT II 1H
API WELL NO. Revised
47-103-02661H
STATE COUNTY PERMIT

WELL TYPE: OIL GAS LIQUID INJECTION WASTE DISPOSAL
(IF "GAS") PRODUCTION STORAGE DEEP SHALLOW
LOCATION ELEVATION 1493' WATERSHED CROOKED RUN AND BAT RUN
DISTRICT CLAY COUNTY WETZEL
QUADRANGLE LITTLETON 7.5' LEASE NUMBER _____
SURFACE OWNER GEORGE H. WILLIAMS & DALE LAMB (CO-SUCCESSOR TRUSTEES) ACREAGE 124.7±
OIL & GAS ROYALTY OWNER GREEN DOT FARMS, LLC. LEASE ACREAGE 311.9±, 10.71±, 46.00±
PROPOSED WORK: DRILL CONVERT DRILL DEEPER REDRILL FRACTURE OR STIMULATE PLUG OFF OLD FORMATION
PERFORATE NEW FORMATION OTHER PHYSICAL CHANGE (SPECIFY) EXTEND BOREPATH
PLUG & ABANDON CLEAN OUT & REPLUG
TARGET FORMATION MARCELLUS ESTIMATED DEPTH 7650' + Horizontal Leg

WELL OPERATOR GRENADIER ENERGY PARTNERS, LLC. DESIGNATED AGENT SHARON BARTH - CT CORPORATION
ADDRESS 1610 WOODSTEAD CT. SUITE 330 THE WOODLANDS, TEXAS 77380 ADDRESS 707 VIRGINIA STREET EAST 15TH FLOOR CHARLESTON, WV 25301

COUNTY NAME PERMIT

A.R.L.B