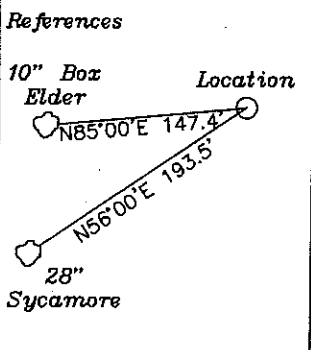
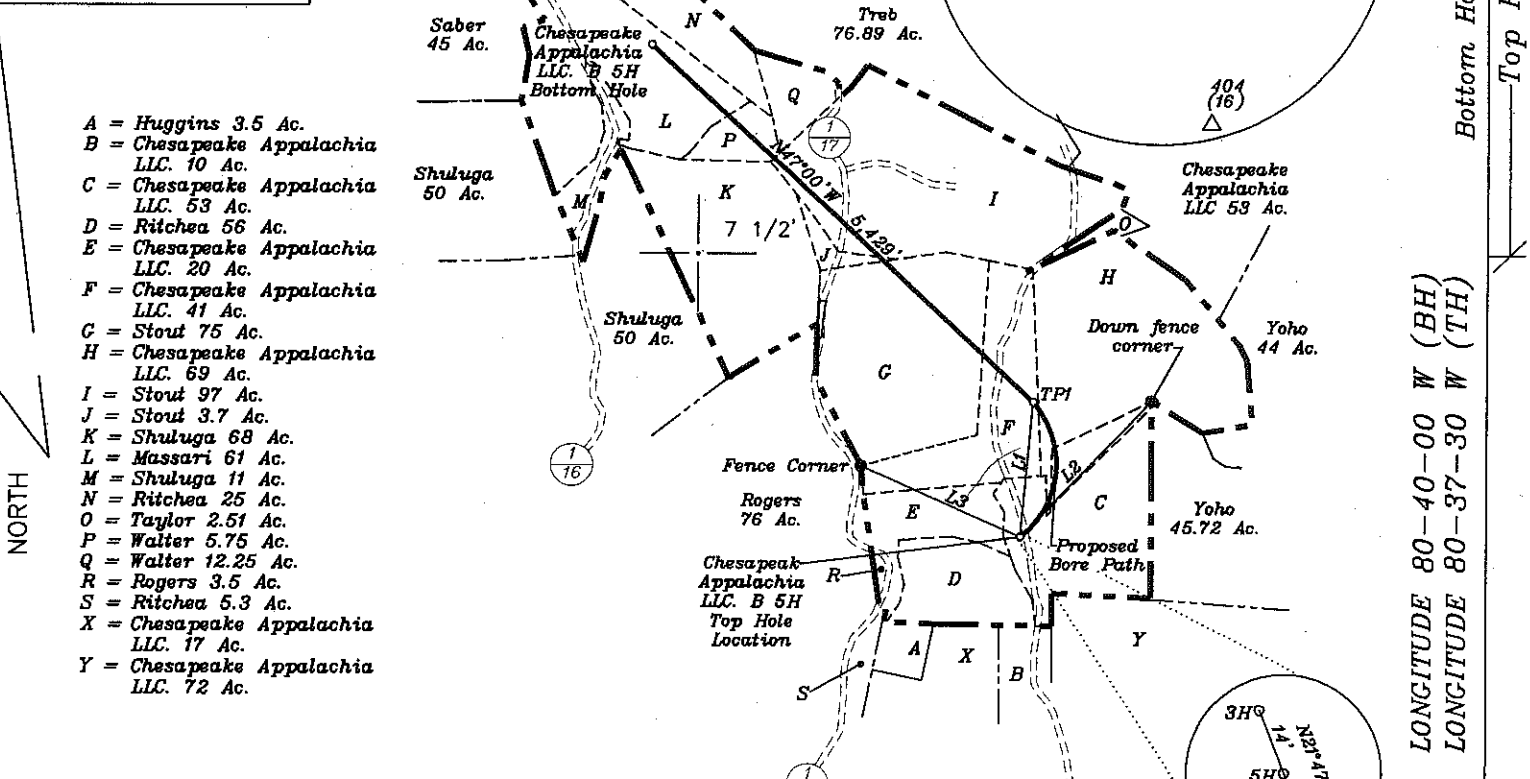


Top Hole 8,200'



LATITUDE 39-42-30 N

Bottom Hole 380'



- A = Huggins 3.5 Ac.
- B = Chesapeake Appalachia LLC. 10 Ac.
- C = Chesapeake Appalachia LLC. 53 Ac.
- D = Ritchea 56 Ac.
- E = Chesapeake Appalachia LLC. 20 Ac.
- F = Chesapeake Appalachia LLC. 41 Ac.
- G = Stout 75 Ac.
- H = Chesapeake Appalachia LLC. 69 Ac.
- I = Stout 97 Ac.
- J = Stout 3.7 Ac.
- K = Shuluga 68 Ac.
- L = Massari 61 Ac.
- M = Shuluga 11 Ac.
- N = Ritchea 25 Ac.
- O = Taylor 2.51 Ac.
- P = Walter 5.75 Ac.
- Q = Walter 12.25 Ac.
- R = Rogers 3.5 Ac.
- S = Ritchea 5.3 Ac.
- X = Chesapeake Appalachia LLC. 17 Ac.
- Y = Chesapeake Appalachia LLC. 72 Ac.

Top Hole
NAD 27-39.690888 N, 80.653884 W
NAD 83-39.690968 N, 80.653694 W
State Plane NAD 27-435833.6 N, 1675290.9 E
TP 1
NAD 27-39.694722 N, 80.653500 W
NAD 83-39.694802 N, 80.653310 W
State Plane NAD 27-437228 N, 1675417 E
Bottom Hole
NAD 27-39.704746 N, 80.667781 W
NAD 83-39.704826 N, 80.667591 W
State Plane NAD 27-440931 N, 1671446 E

NUMBER	DIRECTION	DISTANCE
L1	N05°10' E	1,401'
L2	S45°07' W	2,000'
L3	S64°27' E	1,850'

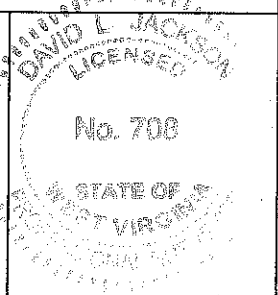
Notes: Ties to wells and corners are based on State Plane Grid North-WV North Zone NAD 83.

(+) DENOTES LOCATION OF WELL ON UNITED STATES TOPOGRAPHIC MAPS

FILE NO. _____
 DRAWING NO. 1
 SCALE 1" = 2000'
 MINIMUM DEGREE OF ACCURACY 1 in 200
 PROVEN SOURCE OF ELEVATION GPS
submeter unit

I THE UNDERSIGNED, HEREBY CERTIFY THAT THIS PLAT IS CORRECT TO THE BEST OF MY KNOWLEDGE AND BELIEF AND SHOWS ALL THE INFORMATION REQUIRED BY LAW AND THE REGULATIONS ISSUED AND PRESCRIBED BY THE DEPARTMENT OF ENERGY.

(SIGNED) David L Jackson
 R.P.E. _____ L.L.S. 708



STATE OF WEST VIRGINIA
 Division of Environmental Protection
 OFFICE OF OIL AND GAS

DATE October 21, 2009
 OPERATOR'S WELL NO. Chesapeake Appalachia LLC. B 5H
 API WELL NO. _____

WELL TYPE: OIL GAS X LIQUID INJECTION WASTE DISPOSAL
 (IF "GAS") PRODUCTION X STORAGE DEEP SHALLOW X

LOCATION: ELEVATION 1,068' WATER SHED Lynn Camp Run
 DISTRICT Proctor COUNTY Wetzel
 QUADRANGLE Wileyville 7 1/2'

SURFACE OWNER Chesapeake Appalachia LLC. ACREAGE 53 ac.
 OIL & GAS ROYALTY OWNER Chesapeake Appalachia LLC. LEASE ACREAGE 452.98 ac
 LEASE NO. 27445, 30560, 26504, 26453, 26459, 228456 & 250051

PROPOSED WORK: DRILL X CONVERT DRILL DEEPER REDRILL FRACTURE OR STIMULATE PLUG OFF OLD FORMATION PERFORATE NEW FORMATION X OTHER PHYSICAL CHANGE IN WELL (SPECIFY) _____

PLUG AND ABANDON CLEAN OUT AND REPLUG
 TARGET FORMATION Marcellus ESTIMATED DEPTH 6,949' + Horizontal leg
 WELL OPERATOR Chesapeake Appalachia, L.L.C. DESIGNATED AGENT James E. Grey
 ADDRESS P.O. Box 18496 Oklahoma City, OK 73154-0496 ADDRESS P.O. Box 6070 Charleston, WV 25362

47 103 02543 H
 STATE COUNTY PERMIT
CANCELLED