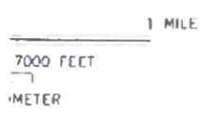


32'30"
476
475
39°30'
80°30'

RECEIVED
Office of Oil and Gas
OCT 18 2023
WV Department of
Environmental Protection

WELL# RR-33A

39 32'30" 40 41 42 80°30'



ROAD CLASSIFICATION

Heavy-duty		Light-duty	
Medium-duty		Unimproved dirt	
Slate Route			

BIG RUN, W. VA.
SE/4 LITTLETON 15' QUADRANGLE
N3930—W8030/7.5

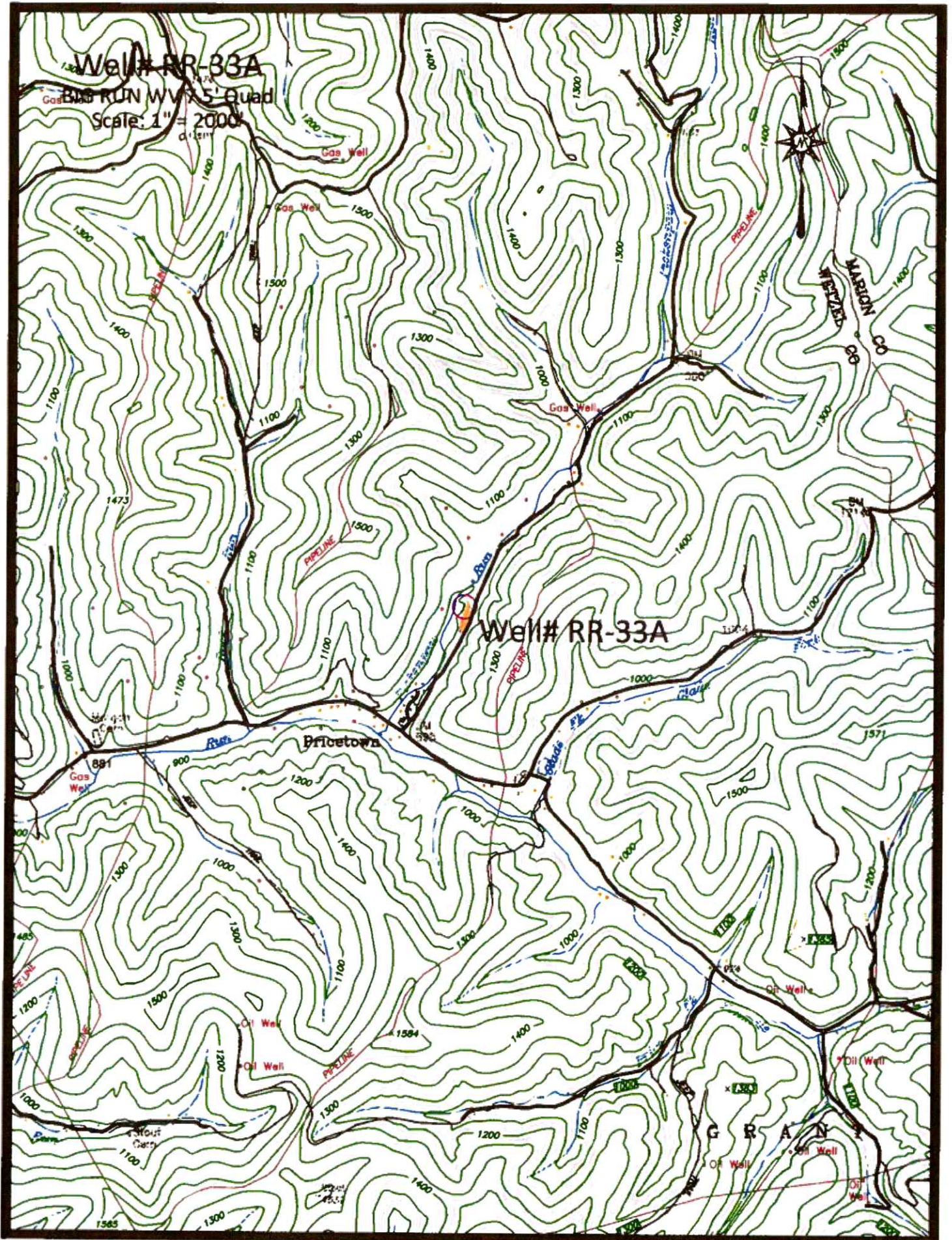
1960
UNITED STATES GEOLOGICAL SURVEY
AMS 4863 II SE—SERIES V854

EQUEST

Revisions shown in purple compiled in cooperation with State of West Virginia agencies from aerial photographs taken 1976. This information not field checked.

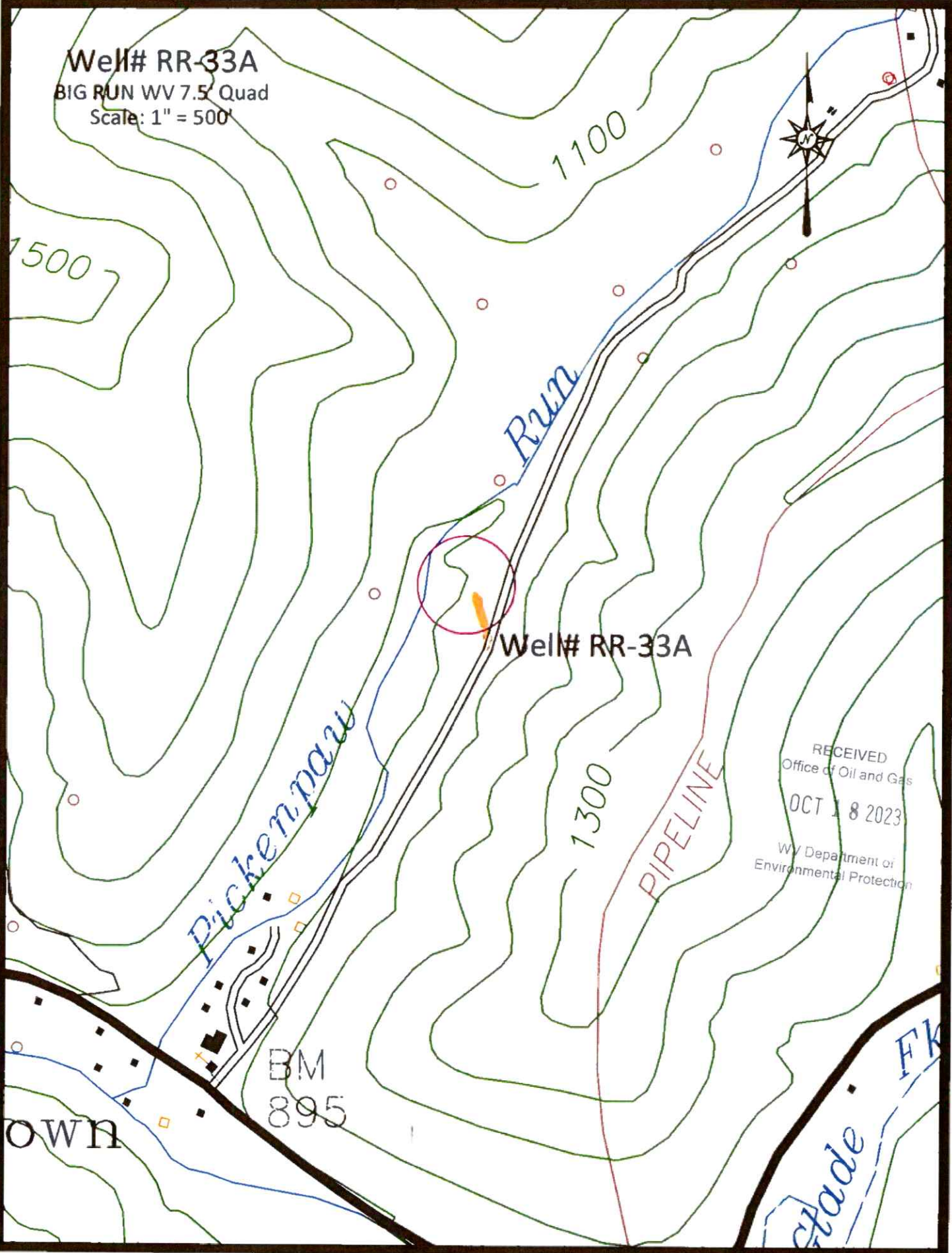
'Big Run; WV Scale: 1" = 0.379Mi 610Mt 2,000Ft, 1 Mi = 2.640" , 1 cm = 240Mt

11/10/2023



11/10/2023

Well# RR-33A
BIG RUN WV 7.5' Quad
Scale: 1" = 500'



RECEIVED
Office of Oil and Gas
OCT 18 2023
WV Department of
Environmental Protection

TOWN

BM
895

11/10/2023