

Well# SC-4P  
HUNDRED WV / PA 7.5' Quad  
Scale: 1" = 500'

TRAIL

1685

RECEIVED  
Office of Oil and Gas  
OCT 18 2023  
WV Department of  
Environmental Protection

T110  
1300

Well# SC-4P

1300

Run.

1200

Oil Well

1300

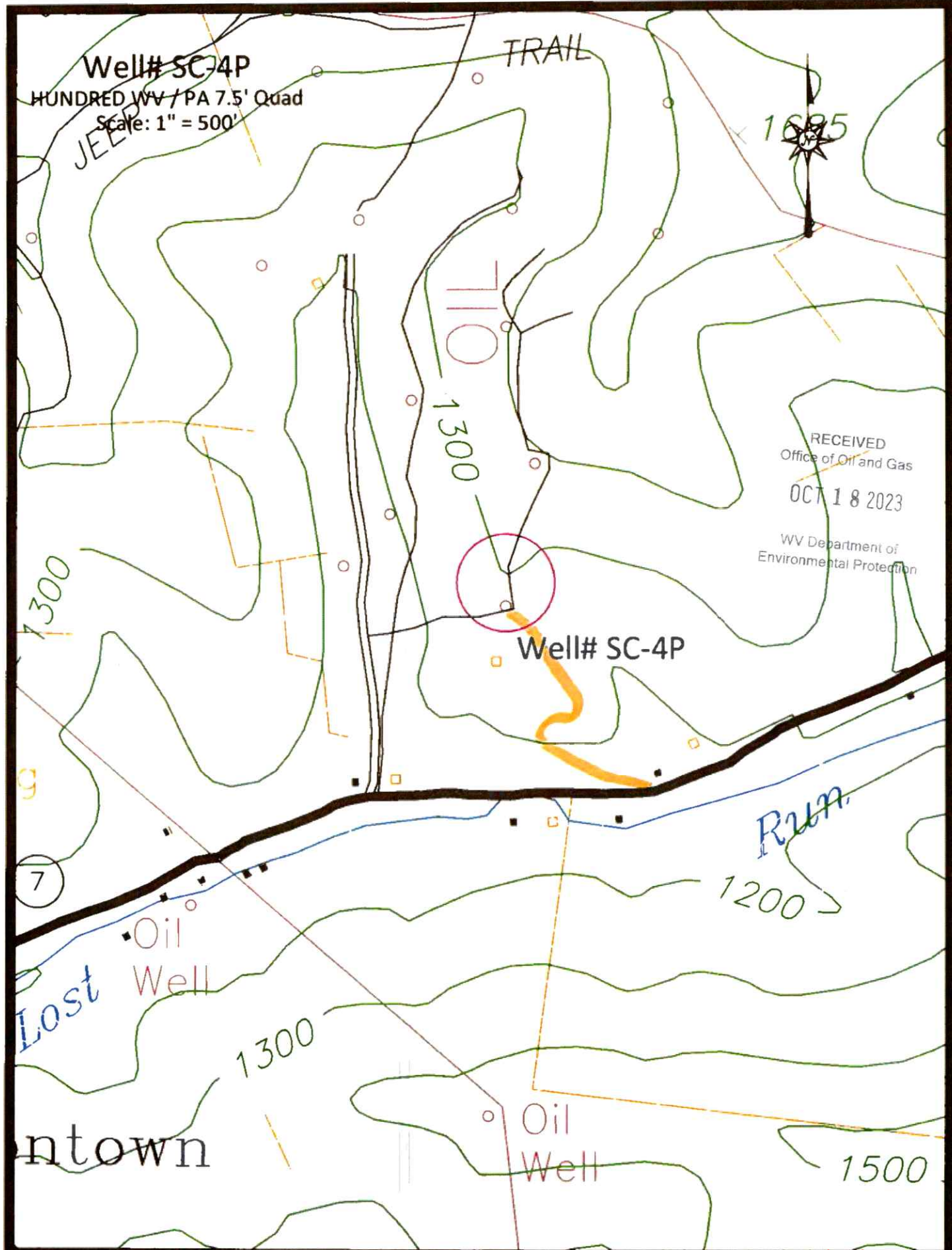
Oil Well

1500

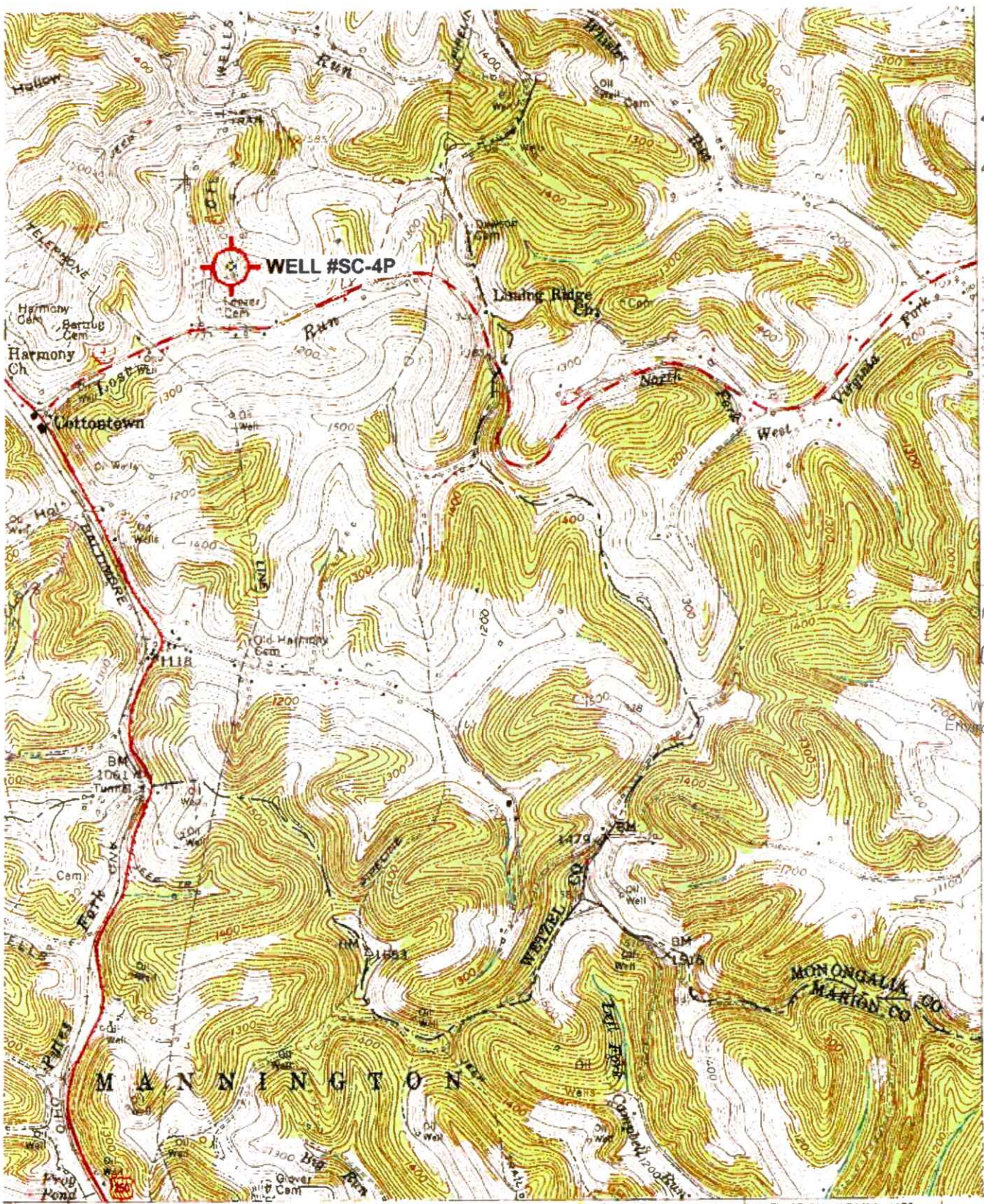
antown

Access Road

11/10/2023







4391  
40'  
4389  
RECEIVED  
Office of Oil and Gas  
OCT 18 2023  
WV Department of  
Environmental Protection

VERGAP 15 MI.  
SHORT 33 MI.

25' 1:250 000 FEET (PA) 551

52 553  
INTERIOR GEOLOGICAL SURVEY, RESTON, VIRGINIA - 1977

39°37'30"  
80°22'30"



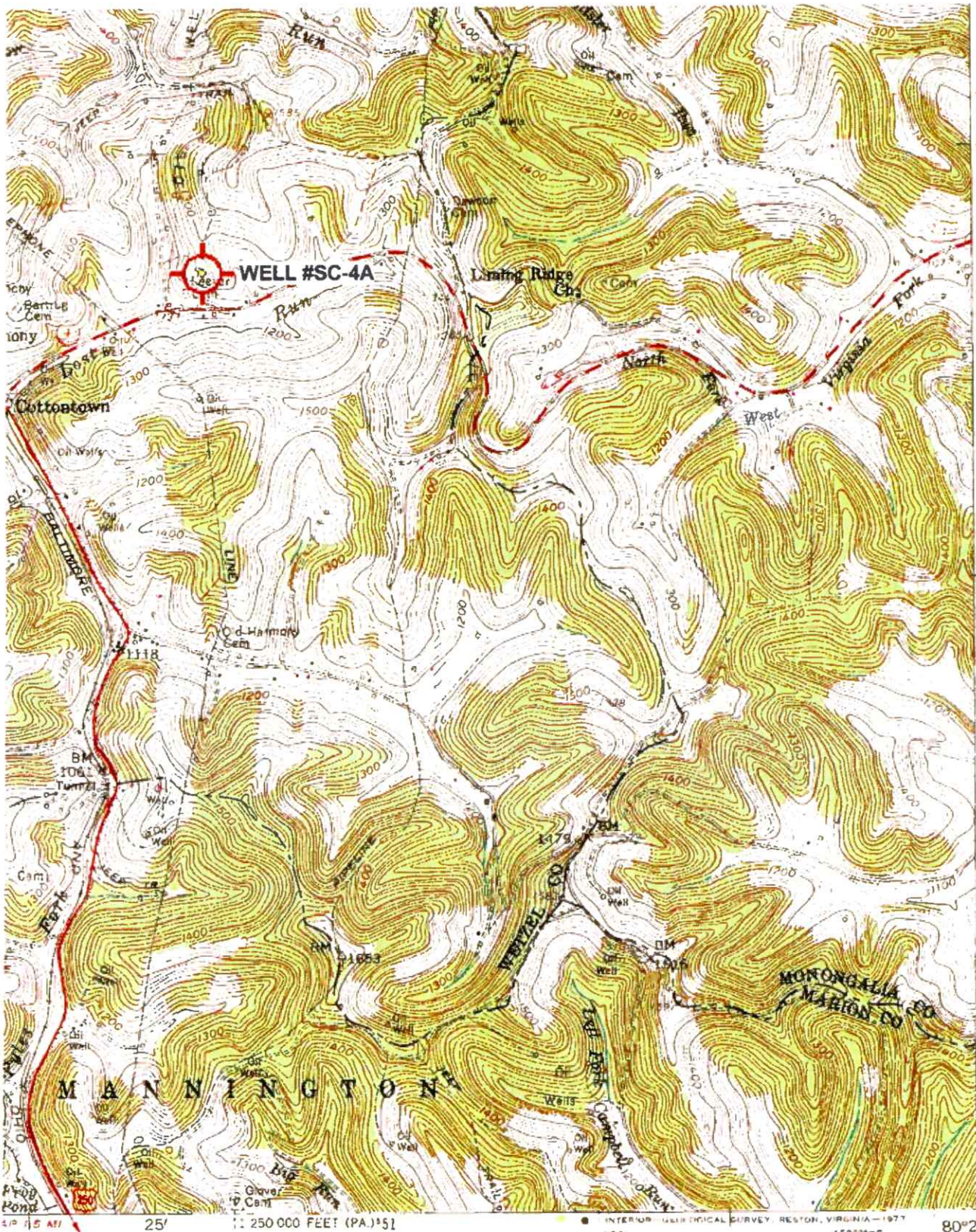
ROAD CLASSIFICATION		
Heavy duty		Light duty
Medium duty		Unimproved dirt
U.S. Route		State Route

(MANNINGTON)  
4387 11 SE

HUNDRED, W. VA. - PA.  
NW/4 MANNINGTON 15' QUADRANGLE  
11/10/2023

"Hundred" WV PA Scale: 1" = 0.379Mi 610M 2 000Ft 1 Mi = 2 640' 1 cm = 240M





43°1'  
40'  
189  
RECEIVED  
Office of Oil and Gas  
OCT 18 2023  
WV Department of  
Environmental Protection  
120 000 FEET  
(PA)  
30°47'30"  
80°22'30"

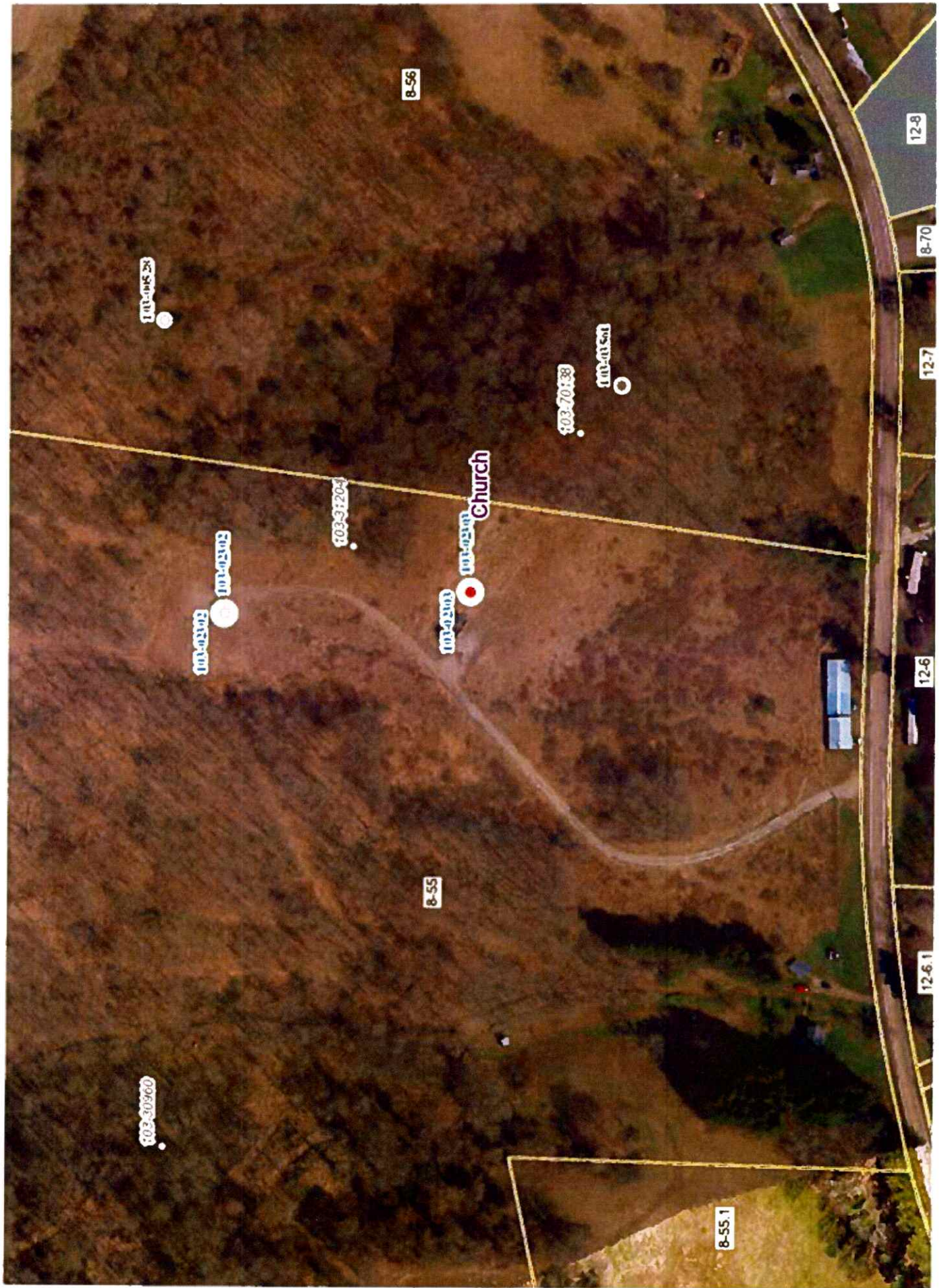


ROAD CLASSIFICATION

- Heavy duty ———
- Medium duty - - - - -
- Light duty ———
- Unimproved dirt - - - - -
- U.S. Route ———
- State Route ———

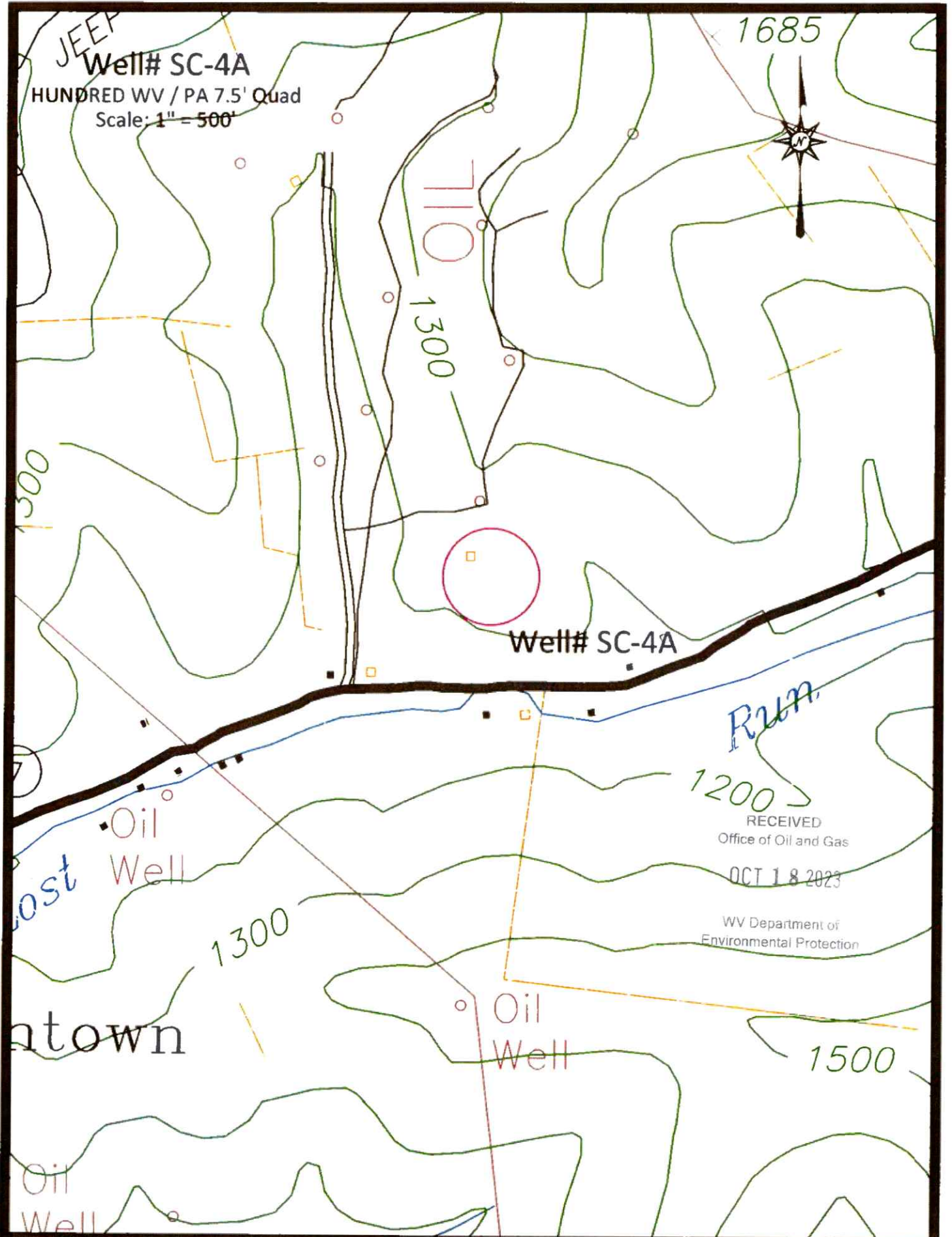
HUNDRED, W. VA.—PA.  
NW/4 MANNINGTON 15' QUADRANGLE  
N 3937.5—W 8022.5/7.5





11/10/2023





JEEP

Well# SC-4A

HUNDRED WV / PA 7.5' Quad

Scale: 1" = 500'

1685

T10  
1300

Well# SC-4A

Run

1200

RECEIVED  
Office of Oil and Gas

OCT 18 2023

WV Department of  
Environmental Protection

1300

Oil  
Well

1500

ost

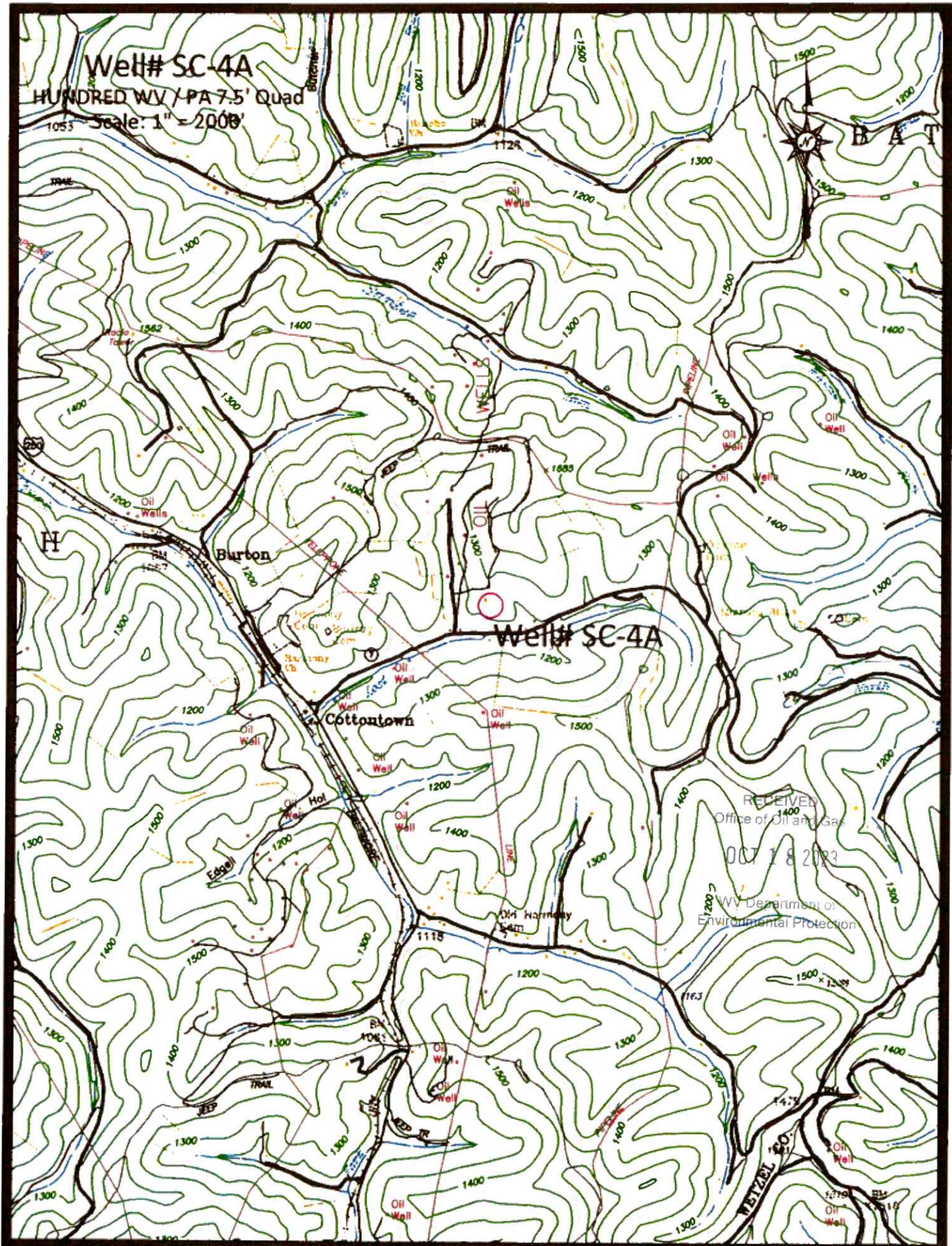
Oil  
Well

atown

Oil  
Well

11/10/2023





Well# SC-4A  
HUNDRED WV / PA 7.5' Quad  
Scale: 1" = 2000'

Well# SC-4A

RECEIVED  
Office of Oil and Gas  
OCT 18 2023  
WV Department of  
Environmental Protection

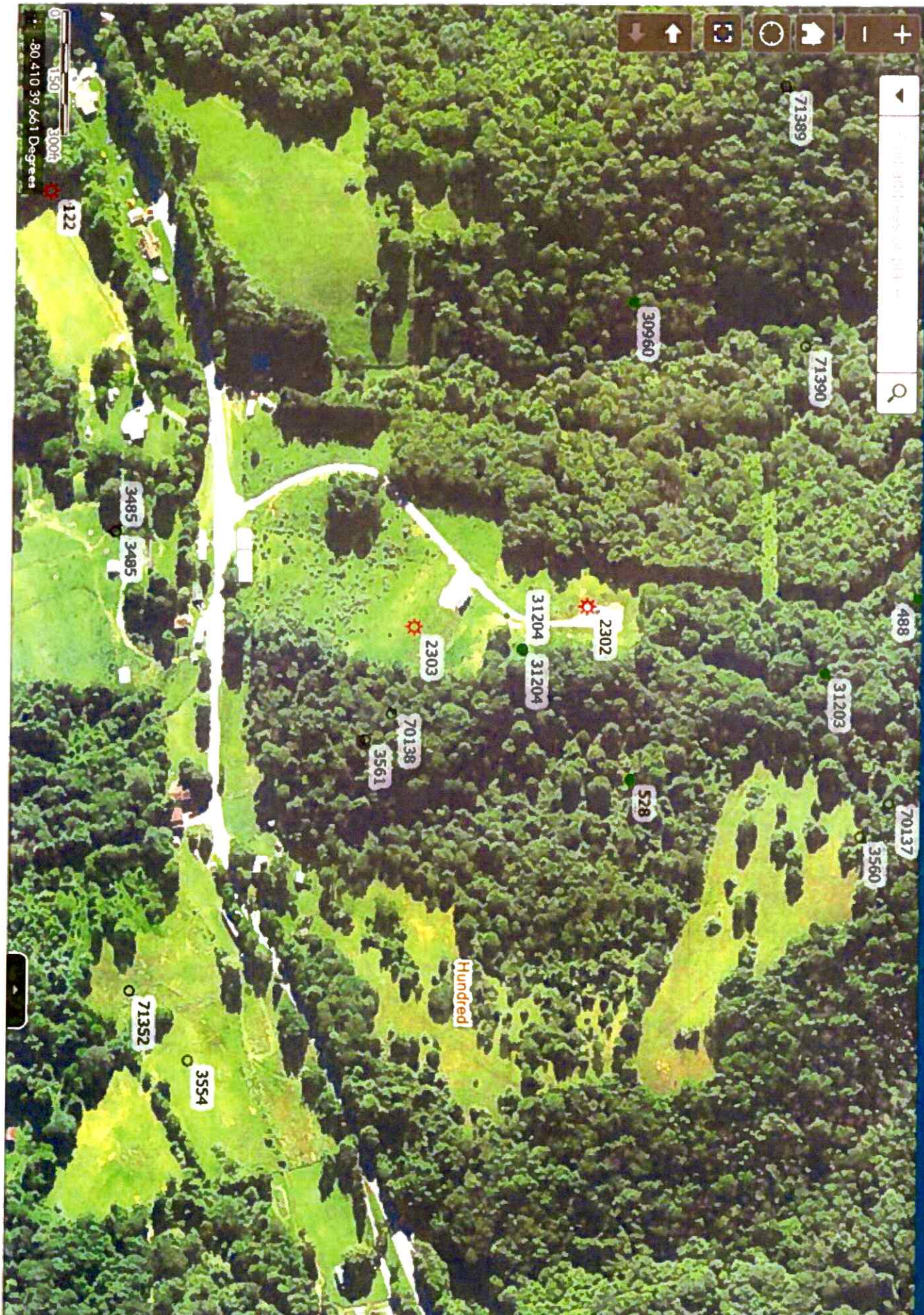
11/10/2023





# West Virginia Oil and Gas Wells (WVOG)

Take Survey \*Pipeline\* \*Pipeline-Plus\*



11/10/2023