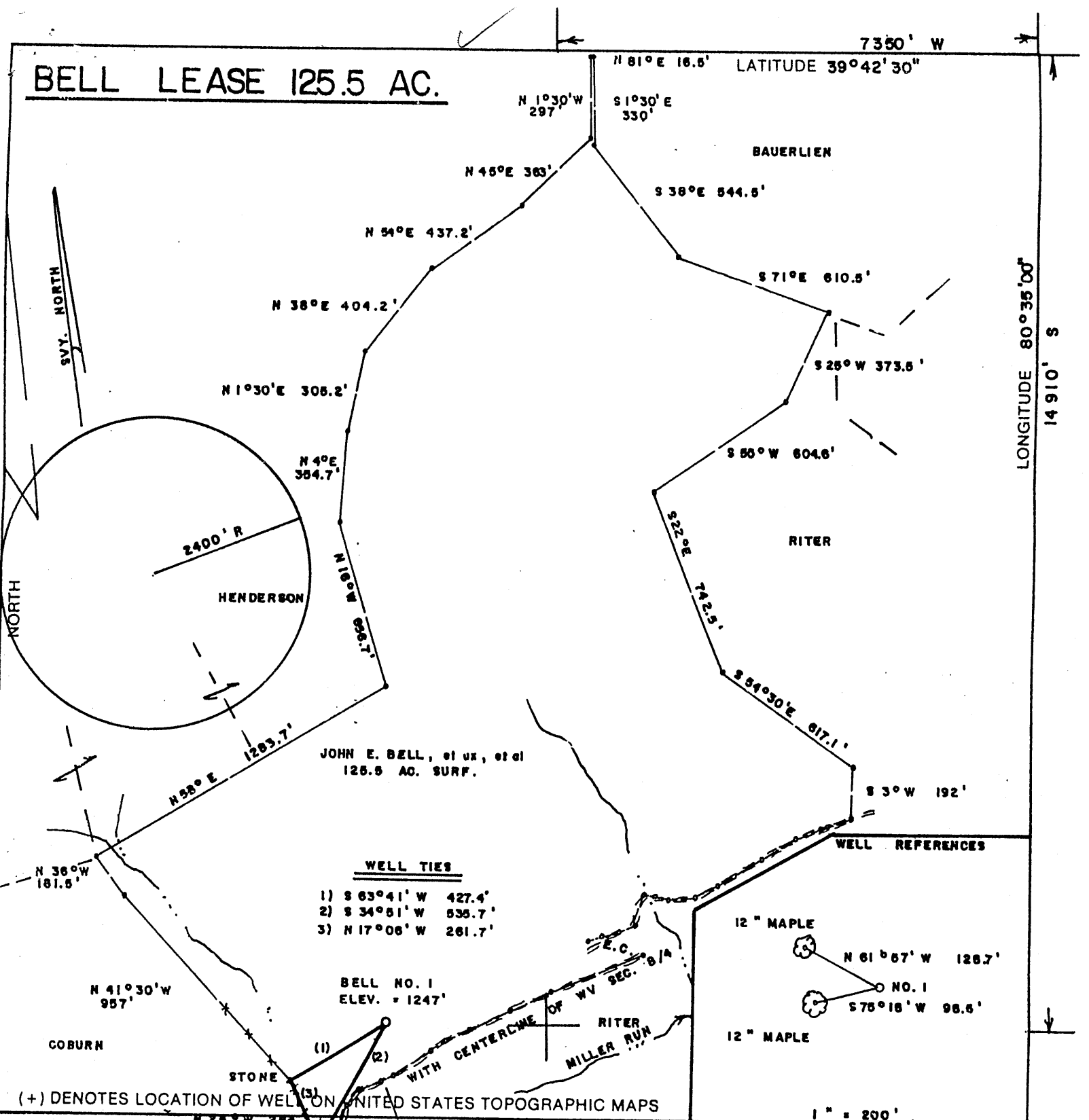


# BELL LEASE 125.5 AC.



JOHN E. BELL, et ux, et al  
125.5 AC. SURF.

**WELL TIES**

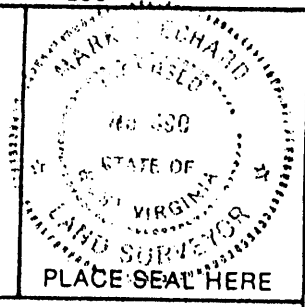
- 1) S 63°41' W 427.4'
- 2) S 34°51' W 535.7'
- 3) N 17°06' W 261.7'

**WELL REFERENCES**

- 12" MAPLE
- N 61°57' W 126.7'
- NO. 1
- S 75°18' W 98.6'
- 12" MAPLE

FILE NO. \_\_\_\_\_  
 DRAWING NO. \_\_\_\_\_  
 SCALE 1" = 500'  
 MINIMUM DEGREE OF ACCURACY 1/200  
 PROVEN SOURCE OF ELEVATION JCT. OF ROADS  
 SOUTH OF LEASE ELEV. = 1117'

I THE UNDERSIGNED, HEREBY CERTIFY THAT THIS PLAN IS CORRECT TO THE BEST OF MY KNOWLEDGE AND BELIEF AND SHOWS ALL THE INFORMATION REQUIRED BY LAW AND THE REGULATIONS ISSUED AND PRESCRIBED BY THE DEPARTMENT OF ENERGY.  
 (SIGNED) Mark C. Echard  
 R.P.E. \_\_\_\_\_ L.L.S. 490



STATE OF WEST VIRGINIA  
 Division of Environmental Protection  
 OFFICE OF OIL AND GAS

DATE OCTOBER 16, 2003  
 OPERATOR'S WELL NO. BELL NO. 1  
 API WELL NO. 47-103-02014  
 STATE 47 COUNTY 103 PERMIT 02014

WELL TYPE: OIL  GAS  LIQUID INJECTION  WASTE DISPOSAL   
 (IF "GAS,") PRODUCTION  STORAGE  DEEP  SHALLOW

LOCATION: ELEVATION 1247' WATERSHED MILLER RUN  
 DISTRICT CENTER COUNTY WETZEL  
 QUADRANGLE LITTLETON 7.5'

SURFACE OWNER JOHN E. BELL, et ux, et al ACREAGE 125.5  
 OIL & GAS ROYALTY OWNER JOHN E. BELL, et ux, et al LEASE ACREAGE 125.5  
 LEASE NO. \_\_\_\_\_

PROPOSED WORK: DRILL  CONVERT  DRILL DEEPER  REDRILL  FRACTURE OR STIMULATE  PLUG OFF OLD FORMATION  PERFORATE NEW FORMATION  OTHER PHYSICAL CHANGE IN WELL (SPECIFY) \_\_\_\_\_

PLUG AND ABANDON  CLEAN OUT AND REPLUG   
 TARGET FORMATION SPEECHLEY ESTIMATED DEPTH 3900'  
 WELL OPERATOR D.A.C. DESIGNATED AGENT MR. KENNETH MASON  
 ADDRESS P.O. BOX 99 ADDRESS P.O. BOX 99  
ALMA, WV 26320 ALMA, WV 26320

66 SILVER HILL (37)

LONGITUDE 80°55'08" S 14910' S

COUNTY NAME WETZEL

PERMIT 2014

*WTS*

State of West Virginia  
Department of Environmental Protection  
Office of Oil and Gas

Well Operator's Report of Well Work

**RECEIVED**  
Office of Oil & Gas  
Office of Chief  
**APR 09 2004**  
WV Department of  
Environmental Protection

Farm name: Bell

Operator Well No.: Bell #1

LOCATION: Elevation: 1,247'

Quadrangle: Littleton 7.3

District: Center

County: Wetzel

Latitude: 14,910 Feet South of

39 Deg. 42 Min. 30 Sec.

Longitude 7,350 Feet West of

80 Deg. 35 Min. 00 Sec.

**Company:**

**Drilling Appalachian Corporation**

	Casing & Tubing	Used in drilling	Left in well	Cement fill up Cu. Ft.
<b>Address:</b>				
<b>P.O. Box 99 Alma WV 26320</b>	9 5/8	230	215	85 sks
<b>Agent: Kenneth Mason</b>				
<b>Inspector: Mike Underwood</b>	6 5/8	1550	1520	100 sks
<b>Date Permit Issued: 11/12/2003</b>				
<b>Date Well Work Commenced: 12/29/03</b>	4 1/2	3560	3330	170 sks
<b>Date Well Work Completed: 01/05/04</b>				
<b>Verbal Plugging:</b>				
<b>Date Permission granted on:</b>				
<b>Rotary X Cable Rig</b>				
<b>Total Depth (feet): 3560</b>				
<b>Fresh Water Depth (ft.):</b>				
<b>Salt Water Depth (ft.): N/A</b>				
<b>Is coal being mined in area (N/Y)? N</b>				
<b>Coal Depths (ft.): N/A</b>				

OPEN FLOW DATA

Producing formation Gordon Pay zone depth (ft) 3170-3190

Gas: Initial open tstm MCF/d Oil: Initial open flow \_\_\_\_\_ Bbl/d

Final open flow 160 MCF/d Final open flow \_\_\_\_\_ Bbl/d

Time of open flow between initial and final tests \_\_\_\_\_ Hours

Static rock Pressure 475# psig (surface pressure) after 48 Hours

Second producing formation Big Injun Pay zone depth (ft) 2425-2445

Gas: Initial open flow \* \_\_\_\_\_ MCF/d Oil: Initial open flow \_\_\_\_\_ Bbl/d

Final open flow \* \_\_\_\_\_ MCF/d Final open flow \_\_\_\_\_ Bbl/d

Time of open flow between initial and final tests \_\_\_\_\_ Hours

Static rock Pressure \_\_\_\_\_ psig (surface pressure) after \_\_\_\_\_ Hours

\* = commingled zones

NOTE: ON BACK OF THIS FORM PUT THE FOLLOWING: 1). DETAILS OF PERFORATED INTERVALS, FRACTURING OR STIMULATING, PHYSICAL CHANGE, ETC. 2). THE WELL LOG WHICH IS A SYSTEMATIC DETAILED GEOLOGICAL RECORD OF ALL FORMATIONS,

Signed: Drilling Appalachian Corporation

By: Kenneth L. Mason

WET 2014

MAY 21 2004

Bell #1

2427 4th St. Injun. 2320#

Stage #1	perfs	sand	avg rate	isip
Gordon	2420-3180	250 sks	24 bpm	2320#
4 <sup>th</sup>	15 holes			
Big Injun				

Drillers Log

Sh	0	15
Sd/Sh	15	350
Sd	350	375
Sd/Sh	375	1005
Sd	1005	1255
Sd/Sh	1055	1355
RR	1356	1550
Sd/Sh	1550	1675
Sd	1675	2010
Sd/Sh	2010	2230
Lime	2230	2280
Sd/Sh	2280	2360
Lime	2300	2370
Sd	2370	2590
Sd/Sh	2590	3170
Sd	3170	3195
Sd/Sh	3195	3560
Td		3560

Electric Log Tops

Big Lime	2300
Berea	2725
Gordon	3168