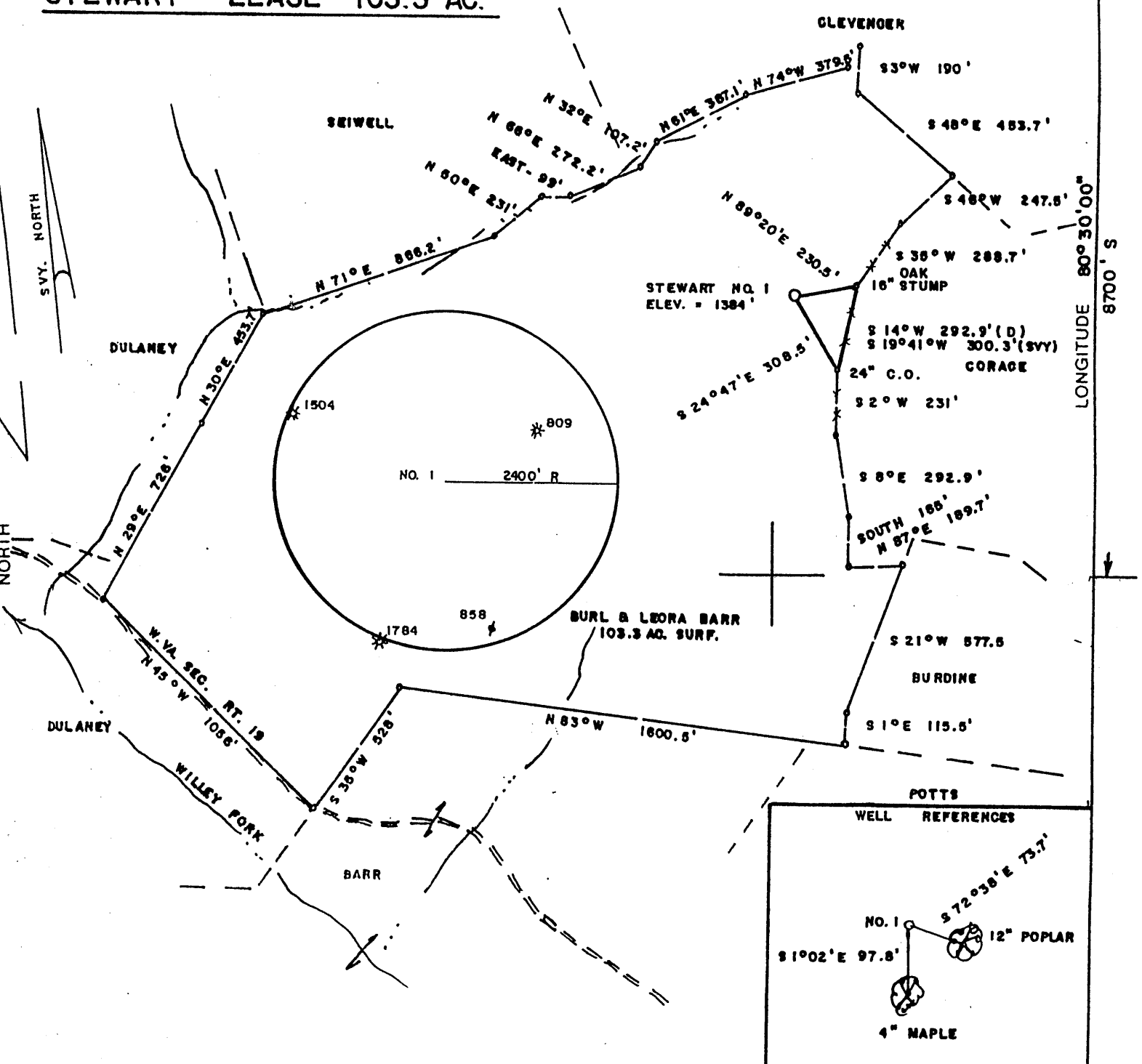


**STEWART LEASE 103.3 AC.**

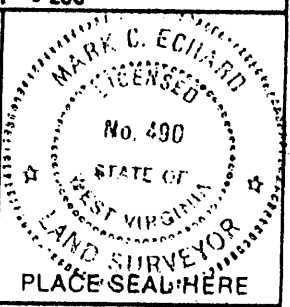
4600' W  
LATITUDE 39°37'30"



(+) DENOTES LOCATION OF WELL ON UNITED STATES TOPOGRAPHIC MAPS

FILE NO. \_\_\_\_\_  
DRAWING NO. \_\_\_\_\_  
SCALE 1" = 500'  
MINIMUM DEGREE OF ACCURACY 1/200  
PROVEN SOURCE OF ELEVATION BM SE of LEASE  
ELEV. = 951'

I THE UNDERSIGNED, HEREBY CERTIFY THAT THIS PLAT IS CORRECT TO THE BEST OF MY KNOWLEDGE AND BELIEF AND SHOWS ALL THE INFORMATION REQUIRED BY LAW AND THE REGULATIONS ISSUED AND PRESCRIBED BY THE DEPARTMENT OF ENERGY.  
(SIGNED) Mark C. Echard  
R.P.E. \_\_\_\_\_ L.L.S. 490



STATE OF WEST VIRGINIA  
Division of Environmental Protection  
OFFICE OF OIL AND GAS

DATE AUGUST 12, 2003  
OPERATOR'S WELL NO. NO. 1  
API WELL NO. \_\_\_\_\_

WELL TYPE: OIL  GAS  LIQUID INJECTION  WASTE DISPOSAL   
(IF "GAS.") PRODUCTION  STORAGE  DEEP  SHALLOW   
LOCATION: ELEVATION 1384' WATERSHED WILLEY FORK  
DISTRICT GRANT COUNTY WETZEL  
QUADRANGLE BIG RUN 7.5'  
SURFACE OWNER BURL and LEORA BARR ACREAGE 103.3  
OIL & GAS ROYALTY OWNER DALE HINERMAN, et al LEASE ACREAGE 103.3  
LEASE NO. \_\_\_\_\_

PROPOSED WORK: DRILL  CONVERT  DRILL DEEPER  REDRILL  FRACTURE OR STIMULATE  PLUG OFF OLD FORMATION  PERFORATE NEW FORMATION  OTHER PHYSICAL CHANGE IN WELL (SPECIFY) \_\_\_\_\_

PLUG AND ABANDON  CLEAN OUT AND REPLUG   
TARGET FORMATION SPEECHLEY ESTIMATED DEPTH 3200'  
WELL OPERATOR D.AC. DESIGNATED AGENT KENNETH MASON  
ADDRESS P. O. BOX 99 ADDRESS P.O. BOX 99  
ALMA, WV 26320 ALMA, WV 26320

COUNTY NAME WET  
PERMIT 1975

(Burl & Leora Barr) Allg 9 9 2003

*my*

State of West Virginia  
Department of Environmental Protection  
Office of Oil and Gas

Well Operator's Report of Well Work

Farm name: Barr Operator Well No.: Stewart #1  
 LOCATION: Elevation: 1,384' Quadrangle: Big Run 7.5'  
 District: Grant County: Wetzel  
 Latitude: 4,800 Feet South of 39 Deg. 37 Min. 30 Sec.  
 Longitude 8,700 Feet West of 80 Deg. 30 Min. 00 Sec.

Company: Drilling Appalachian Corporation	Casing & Tubing	Used in drilling	Left in well	Cement fill up Cu. Ft.
Address: P.O. Box 99 Alma WV 26320	9 5/8	230	215	68 sks
Agent: Kenneth Mason				
Inspector: Mike Underwood	6 5/8	1750	1642	100 sks
Date Permit Issued: 08/26/2003				
Date Well Work Commenced: 08/27/03	4 1/2	3593	3526	170 sks
Date Well Work Completed: 09/07/03				
Verbal Plugging:				
Date Permission granted on:				
Rotary X Cable Rig				
Total Depth (feet): 3593				
Fresh Water Depth (ft.): 1440'				
Salt Water Depth (ft.): N/A				
Is coal being mined in area (N/Y)? N				
Coal Depths (ft.): N/A				

RECEIVED  
Office of Oil & Gas  
Permitting  
JAN 20 2004  
WV Department of  
Environmental Protection

OPEN FLOW DATA

Producing formation Gordon Pay zone depth (ft) 3190-3380  
 Gas: Initial open 29 MCF/d Oil: Initial open flow \_\_\_\_\_ Bbl/d  
 Final open flow 200 MCF/d Final open flow \_\_\_\_\_ Bbl/d  
 Time of open flow between initial and final tests \_\_\_\_\_ Hours  
 Static rock Pressure 475# psig (surface pressure) after 48 Hours

Second producing formation Big Injun Pay zone depth (ft) 2050-2066  
 Gas: Initial open flow \_\_\_\_\_ \* \_\_\_\_\_ MCF/d Oil: Initial open flow \_\_\_\_\_ Bbl/d  
 Final open flow \_\_\_\_\_ \* \_\_\_\_\_ MCF/d Final open flow \_\_\_\_\_ Bbl/d  
 Time of open flow between initial and final tests \_\_\_\_\_ Hours  
 Static rock Pressure \_\_\_\_\_ psig (surface pressure) after \_\_\_\_\_ Hours

\* = commingled zones

NOTE: ON BACK OF THIS FORM PUT THE FOLLOWING: 1). DETAILS OF PERFORATED INTERVALS, FRACTURING OR STIMULATING, PHYSICAL CHANGE, ETC. 2). THE WELL LOG WHICH IS A SYSTEMATIC DETAILED GEOLOGICAL RECORD OF ALL FORMATIONS,

Signed: Drilling Appalachian Corporation  
 By: Kenneth Mason  
 Date: 1-15-04

WET. 1975

FEB 13 2004

Stewart #1  
10-14-03

Stage #1	perfs	sand	avg rate	isip
Gordon 4 <sup>th</sup>	3194-3275 15 holes	250 sks	28 bpm	2949#

Drillers Log

Sh	0	5	
Sd/Sh	5	110	
Sd	110	130	
Sd/Sh	130	290	
Sd	290	300	
Sd/Sh	300	1130	½" strm 2,053'
RR	1130	1405	
Sd/Sh	1405	1805	
Sd	1805	1820	
Sd/Sh	1820	2040	
Sd	2040	2156	
Sd/Sh	2156	2300	
Lime	2300	2310	
Sh	2310	2323	
Lime	2323	2412	
Sd	2412	2585	gas ck @ 2,587' = no show
Sd/Sh	2585	2918	
Sd	2918	2973	
Sd/Sh	2973	3140	
Sd	3140	3197	
Sd/Sh	3197	3235	gas ck @ 3,593 = no show
Sd	3235	3285	
Sd/Sh	3285	3593	
Td	3593		gas ck @ TD = no show

Electric Log Tops

Big Lime	2340
Berea	2720
Gordon	3160

