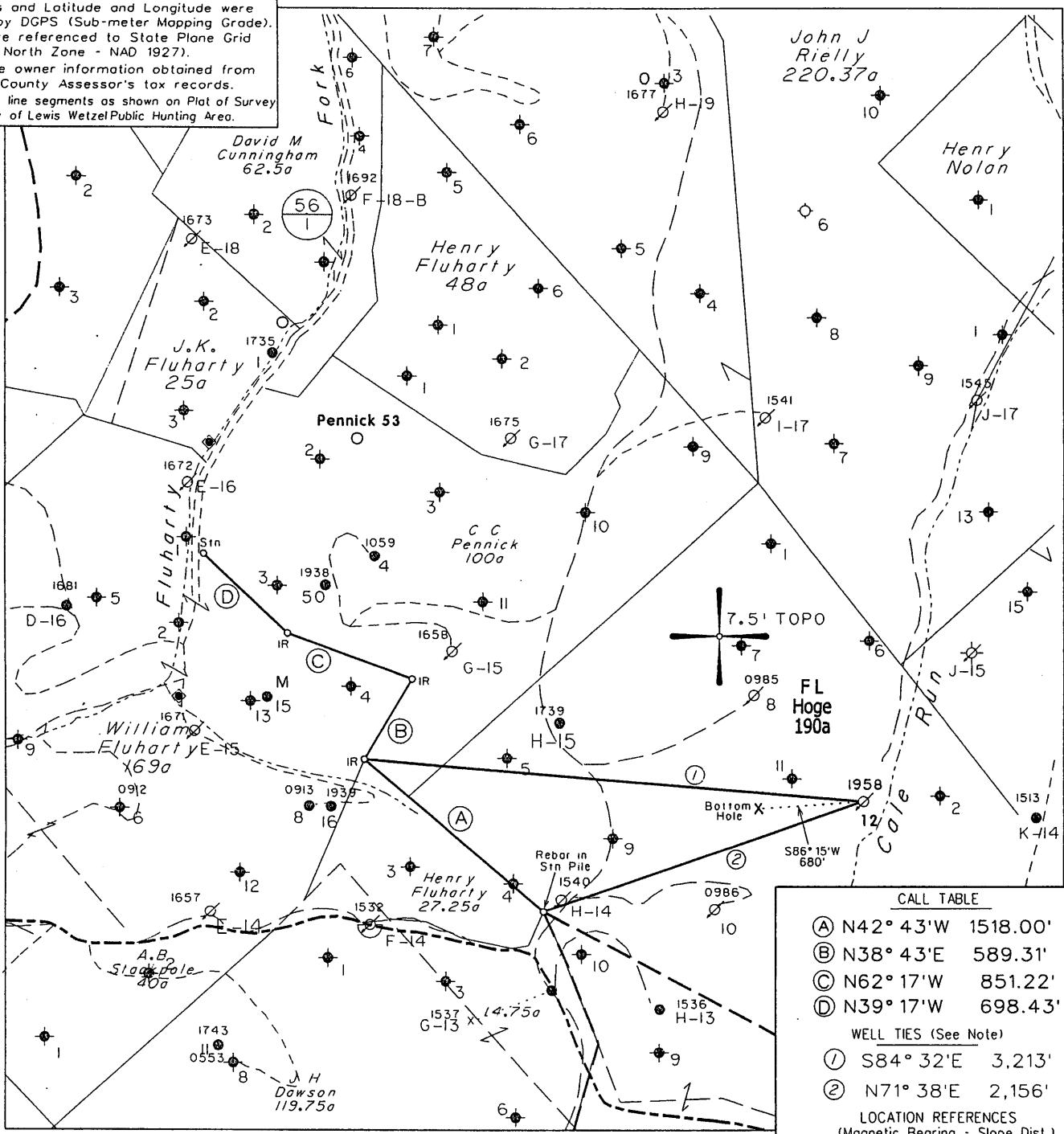


NOTES ON SURVEY

- 1 - Well ties and Latitude and Longitude were measured by DGPS (Sub-meter Mapping Grade). Bearings are referenced to State Plane Grid North (WV North Zone - NAD 1927).
- 2 - Surface owner information obtained from the Wetzel County Assessor's tax records.
- 3 - Property line segments as shown on Plat of Survey by W.P. Foley of Lewis Wetzel Public Hunting Area.



**CALL TABLE**

(A) N42° 43' W 1518.00'  
 (B) N38° 43' E 589.31'  
 (C) N62° 17' W 851.22'  
 (D) N39° 17' W 698.43'

**WELL TIES (See Note)**

(1) S84° 32' E 3,213'  
 (2) N71° 38' E 2,156'

**LOCATION REFERENCES**  
 (Magnetic Bearing - Slope Dist.)

Existing Well

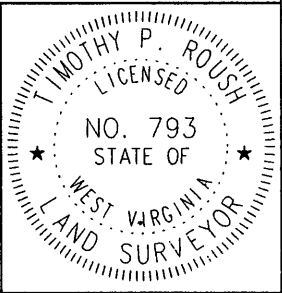
NOTE: All known water supply sources within 1000' of proposed well are shown. (H) DENOTES LOCATION OF WELL ON UNITED STATES TOPOGRAPHIC MAPS

Denotes Water Supply Source.

FILE NO. 1038-17  
 MAP NO. \_\_\_\_\_ N \_\_\_\_\_ S \_\_\_\_\_ E \_\_\_\_\_ W  
 SCALE 1" = 1000'  
 MINIMUM DEGREE OF ACCURACY 1 in 200  
 PROVEN SOURCE OF ELEVATION DGPS Survey  
 5/22/03

I THE UNDERSIGNED, HEREBY CERTIFY THAT THIS PLAT IS CORRECT TO THE BEST OF MY KNOWLEDGE AND BELIEF AND SHOWS ALL THE INFORMATION REQUIRED BY LAW AND THE REGULATIONS ISSUED AND PRESCRIBED BY THE DEPARTMENT OF MINES.

(SIGNED) *Timothy P. Roush*  
 TIMOTHY P. ROUSH PS 793



WEST VIRGINIA  
 Division of Environmental Protection  
 Office of Oil and Gas  
 601 57th Street  
 Charleston, West Virginia 25304



DATE May 23, 2003  
 FARM F.L. Hoge NO. 12  
 API WELL NO. 47-103-1958F

WELL TYPE: OIL \_\_\_\_\_ GAS \_\_\_\_\_ LIQUID INJECTION X WASTE DISPOSAL \_\_\_\_\_  
 (IF "GAS") PRODUCTION \_\_\_\_\_ STORAGE \_\_\_\_\_ DEEP \_\_\_\_\_ SHALLOW \_\_\_\_\_  
 LOCATION: ELEVATION 1,007' WATERSHED Cale Run  
 DISTRICT Green COUNTY Wetzel  
 QUADRANGLE Centerpoint 7.5'  
 SURFACE OWNER W.Va. Public Lands Corp. ACREAGE 190 Ac.  
 OIL & GAS ROYALTY OWNER East Resources, et al. LEASE ACREAGE \_\_\_\_\_  
 LEASE NO. \_\_\_\_\_  
 PROPOSED WORK: DRILL \_\_\_\_\_ CONVERT \_\_\_\_\_ DRILL DEEPER \_\_\_\_\_ REDRILL \_\_\_\_\_ FRACTURE OR STIMULATE X PLUG OFF OLD FORMATION \_\_\_\_\_ PERFORATE NEW FORMATION \_\_\_\_\_ OTHER PHYSICAL CHANGE IN WELL (SPECIFY) \_\_\_\_\_  
 PLUG AND ABANDON \_\_\_\_\_ CLEAN OUT AND REPLUG \_\_\_\_\_  
 TARGET FORMATION Gordon ESTIMATED DEPTH 3,175' MD  
 WELL OPERATOR East Resources, Inc. DESIGNATED AGENT Philip S. Ondrusek 6-6  
 ADDRESS P.O. Box 5519 ADDRESS P. O. Box 5519  
 Vienna, W.Va. 26105 Vienna, W.Va. 26105

*Jacksonburg-Stingtown 95*

SEP 23 2005

WET 1958 F

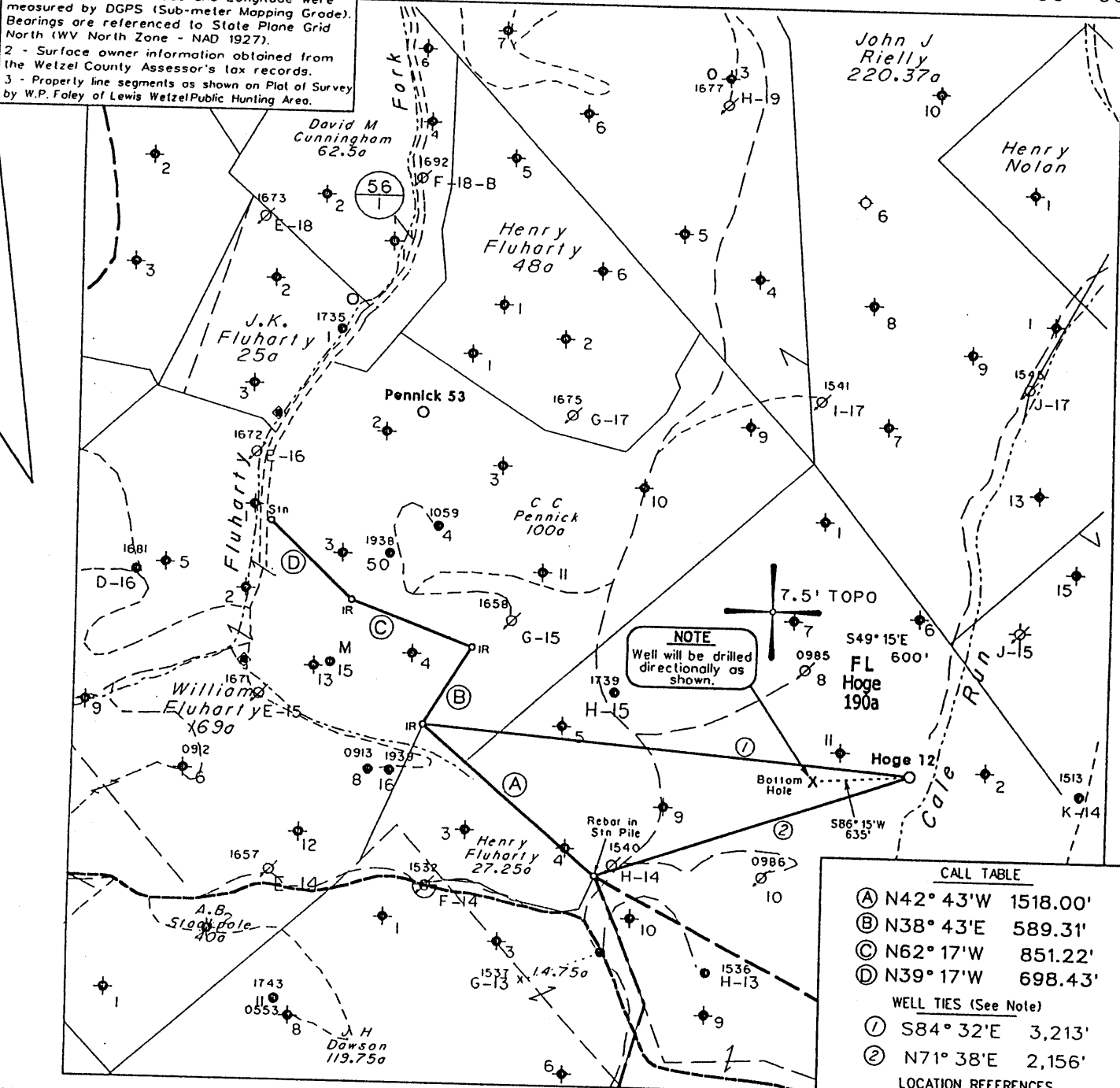
Longitude = 80° 41' 07.2"

5,275'

LATITUDE 39° 30' 00"

NOTES ON SURVEY

- 1 - Well ties and Latitude and Longitude were measured by DGPS (Sub-meter Mapping Grade). Bearings are referenced to State Plane Grid North (WV North Zone - NAD 1927).
- 2 - Surface owner information obtained from the Wetzel County Assessor's tax records.
- 3 - Property line segments as shown on Plat of Survey by W.P. Foley of Lewis Wetzel Public Hunting Area.



NOTE  
Well will be drilled directionally as shown.

CALL TABLE

(A)	N42° 43' W	1518.00'
(B)	N38° 43' E	589.31'
(C)	N62° 17' W	851.22'
(D)	N39° 17' W	698.43'

WELL TIES (See Note)

(1)	S84° 32' E	3,213'
(2)	N71° 38' E	2,156'

LOCATION REFERENCES (Magnetic Bearing - Slope Dist.)

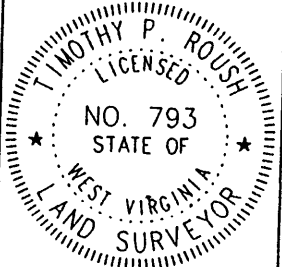
S55° W	99' 18"	Beech
N64° W	67' 6"	Maple

NOTE: All known water supply sources within 1000' of proposed well are shown.  
 (H) DENOTES LOCATION OF WELL ON UNITED STATES TOPOGRAPHIC MAPS

FILE NO. 1038-17  
 MAP NO. \_\_\_\_\_ N \_\_\_\_\_ S \_\_\_\_\_ E \_\_\_\_\_ W \_\_\_\_\_  
 SCALE 1" = 1000'  
 MINIMUM DEGREE OF ACCURACY 1 in 200  
 PROVEN SOURCE OF ELEVATION DGPS Survey  
 5/22/03

I THE UNDERSIGNED, HEREBY CERTIFY THAT THIS PLAT IS CORRECT TO THE BEST OF MY KNOWLEDGE AND BELIEF AND SHOWS ALL THE INFORMATION REQUIRED BY LAW AND THE REGULATIONS ISSUED AND PRESCRIBED BY THE DEPARTMENT OF MINES

(SIGNED) *Timothy P. Roush*  
 TIMOTHY P. ROUSH PS 793



WEST VIRGINIA  
 Division of Environmental Protection  
 Office of Oil and Gas  
 1356 Hansford St.  
 Charleston, West Virginia 25301



DATE May 23, 2003  
 FARM F.L. Hoge NO. 12  
 API WELL NO. 47-103-01958LI

WELL TYPE: OIL \_\_\_\_\_ GAS \_\_\_\_\_ LIQUID INJECTION  WASTE DISPOSAL \_\_\_\_\_  
 (IF "GAS") PRODUCTION \_\_\_\_\_ STORAGE \_\_\_\_\_ DEEP \_\_\_\_\_ SHALLOW \_\_\_\_\_  
 LOCATION: ELEVATION 1,007' WATERSHED Cale Run  
 DISTRICT Green COUNTY Wetzel  
 QUADRANGLE Centerpoint 7.5'  
 SURFACE OWNER W.Va. Public Lands Corp. ACREAGE 190 Ac.  
 OIL & GAS ROYALTY OWNER East Resources, et al. LEASE ACREAGE \_\_\_\_\_  
 LEASE NO. \_\_\_\_\_  
 PROPOSED WORK: DRILL  CONVERT \_\_\_\_\_ DRILL DEEPER \_\_\_\_\_ REDRILL \_\_\_\_\_ FRACTURE OR  
 STIMULATE  PLUG OFF OLD FORMATION \_\_\_\_\_ PERFORATE NEW  
 FORMATION \_\_\_\_\_ OTHER PHYSICAL CHANGE IN WELL (SPECIFY) \_\_\_\_\_

PLUG AND ABANDON \_\_\_\_\_ CLEAN OUT AND REPLUG \_\_\_\_\_  
 TARGET FORMATION Gordon ESTIMATED DEPTH 3,175' MD  
 WELL OPERATOR East Resources, Inc. DESIGNATED AGENT Michael McCown  
 ADDRESS P. O. Box 5519 ADDRESS P. O. Box 5519  
 Vienna, W.Va. 26105 (Jacksonburg-Steindown) Vienna, W.Va. 26105

LONGITUDE 80° 40' 00"  
 8,600'  
 Latitude = 39° 28' 34.8"  
 WEST 1958 LI

JUN 06 2003

State of West Virginia
Division of Environmental Protection
Section of Oil and Gas

Well Operator's Report of Well Work

Farm name: WV PUBLIC LANDS Operator Well No.: HOGUE 12
LOCATION: Elevation: 1,007.00 Quadrangle: CENTERPOINT 7.5
District: GREEN County: WETZEL
Latitude: 8,600 Feet south of 39 Deg 30 Min 30 Sec.
Longitude: 5,275 Feet west of 80 Deg 40 Min 00 Sec.

Company: EAST RESOURCES, INC.
P.O. BOX 5519
VIENNA, WV 26105-5519

Agent: PHILIP S. ONDRUSEK

Inspector: MIKE UNDERWOOD

Permit Issued: 09/20/05
Well work Commenced: 11/02/05
Well work Completed: 11/04/05

Verbal plugging permission granted on:
Rotary X Cable Rig
Total Depth (feet) 3140
Fresh water depths (ft) NA
Salt water depths (ft) 1680

Is coal being mined in area (Y/N) N
Coal Depths (ft): 529

Table with 4 columns: Casing & Tubing Size, Used in Drilling, Left in Well, Cement Fill Up Cu. Ft.
Rows include 8 5/8 and 4 1/2" tubing sizes with corresponding drilling and cement data.

OPEN FLOW DATA \* WATERFLOOD PRODUCER

THIS WELL DIRECTIONALLY DRILLED TO BOTTOM HOLE LOCATION OF 266.25 0 680'

Producing formation Gordon Pay zone depth (ft) 2980-2998
Gas: Initial open flow \* MCF/d Oil: Initial open flow \* Bbl/d
Final open flow \* MCF/d Final open flow \* Bbl/d
Time of open flow between initial and final tests Hours
Static rock pressure psig (surface pressure) after Hours
Second producing formation Pay zone depth (ft)
Gas: Initial open flow MCF/d Oil: Initial open flow Bbl/d
Final open flow MCF/d Final open flow Bbl/d
Time of open flow between initial and final tests Hours
Static rock pressure psig (surface pressure) after Hours

NOTE: ON BACK OF THIS FORM, PUT THE FOLLOWING: 1) DETAILS OF PERFORATED INTERVALS, FRACTURING OR STIMULATING, PHYSICAL CHANGE, ETC. 2) THE WELL LOG WHICH IS A SYSTEMATIC DETAILED GEOLOGICAL RECORD OF ALL FORMATIONS, INCLUDING COAL ENCOUNTERED BY THE WELLBORE.

For: EAST RESOURCES, INC.

By: [Signature]
Date: 1/11/06

JAN 13 2006

WET 1958

**Treatment :**

Treated perforations 2980' -2998' with 500 gals 15 HCL, 333 bbls cross linked gel and 15,300 # 20/40 sand

**Well Log :**

0	140	Sand and Shale
140	206	Sand
206	610	Shale
610	724	Sand
724	826	Shale
826	850	Sand
850	874	Shale
874	932	Sand
932	1252	Shale
1252	1326	Sand
1326	1378	Shale
1378	1446	Sand
1446	1465	Shale
1465	1514	Sand
1514	1554	Shale
1554	1600	Sand
1600	1870	Shale
1870	1914	Sand
1914	1948	Shale
1948	1988	Sand
1988	2080	Shale
2080	2110	Sand
2110	2174	Big Lime
2174	2360	Big Injun
2360	2960	Shale
2960	2986	Gordon Stray
2986	2998	Gordon
2998	3140	Shale
3140		TD

JAN 13 2006

State of West Virginia
Division of Environmental Protection
Section of Oil and Gas
Well Operator's Report of Well Work

Farm name: W V PUBLIC LANDS Operator Well No.: HOGUE 12
LOCATION: Elevation: 1,007.00 Quadrangle: CENTERPOINT 7.5'
District: GREEN County: WETZEL
Latitude: 8,600 Feet south of 39 Deg 30 Min 30 Sec.
Longitude: 5,275 Feet west of 80 Deg 40 Min 00 Sec.

Company: EAST RESOURCES, INC.
P.O. BOX 5519
VIENNA, WV 26105-5519

Agent: PHILIP S. ONDRUSEK

Inspector: MIKE UNDERWOOD

Permit Issued: 06/03/03

Well work Commenced: 06/25/03

Well work Completed: 07/15/03

Verbal plugging permission granted on: Rotary X Cable Rig

Total Depth (feet) 3140

Fresh water depths (ft) NA

Salt water depths (ft) NA

Is coal being mined in area (Y/N) N

Coal Depths (ft): 529

Table with 4 columns: Casing & Tubing Size, Used in Drilling, Left in Well, Cement Fill Up Cu. Ft. Rows include 8 5/8" and 4 1/2" sizes.

OPEN FLOW DATA Not Completed

This well directionally drilled to a bottom hole location of

Producing formation Gordon Pay zone depth (ft) 2986-2998

Gas: Initial open flow \* MCF/d Oil: Initial open flow \* Bbl/d

Final open flow \* MCF/d Final open flow \* Bbl/d

Time of open flow between initial and final tests \* Hours

Static rock pressure \* psig (surface pressure) after Hours

Second producing formation Pay zone depth (ft)

Gas: Initial open flow MCF/d Oil: Initial open flow Bbl/d

Final open flow MCF/d Final open flow Bbl/d

Time of open flow between initial and final tests Hours

Static rock pressure psig (surface pressure) after Hours

NOTE: ON BACK OF THIS FORM, PUT THE FOLLOWING: 1) DETAILS OF PERFORATED INTERVALS, FRACTURING OR STIMULATING, PHYSICAL CHANGE, ETC. 2) THE WELL LOG WHICH IS A SYSTEMATIC DETAILED GEOLOGICAL RECORD OF ALL FORMATIONS, INCLUDING COAL ENCOUNTERED BY THE WELLBORE.

For: EAST RESOURCES, INC.

By:

Date:

Signature of Philip S. Ondrusek

1/5/05

RECEIVED Office of Oil & Gas Office of Chief JAN 06 2005 WV Department of Environmental Protection

JAN 28 2005

WET 1958

**Treatment :**

This well was not completed

**Well Log :**

0	140	Sand and Shale
140	206	Sand
206	610	Shale
610	724	Sand
724	826	Shale
826	850	Sand
850	874	Shale
874	932	Sand
932	1252	Shale
1252	1326	Sand
1326	1378	Shale
1378	1446	Sand
1446	1465	Shale
1465	1514	Sand
1514	1554	Shale
1554	1600	Sand
1600	1870	Shale
1870	1914	Sand
1914	1948	Shale
1948	1988	Sand
1988	2080	Shale
2080	2110	Sand
2110	2174	Big Lime
2174	2360	Big Injun
2360	2960	Shale
2960	2986	Gordon Stray
2986	2998	Gordon
2998	3140	Shale