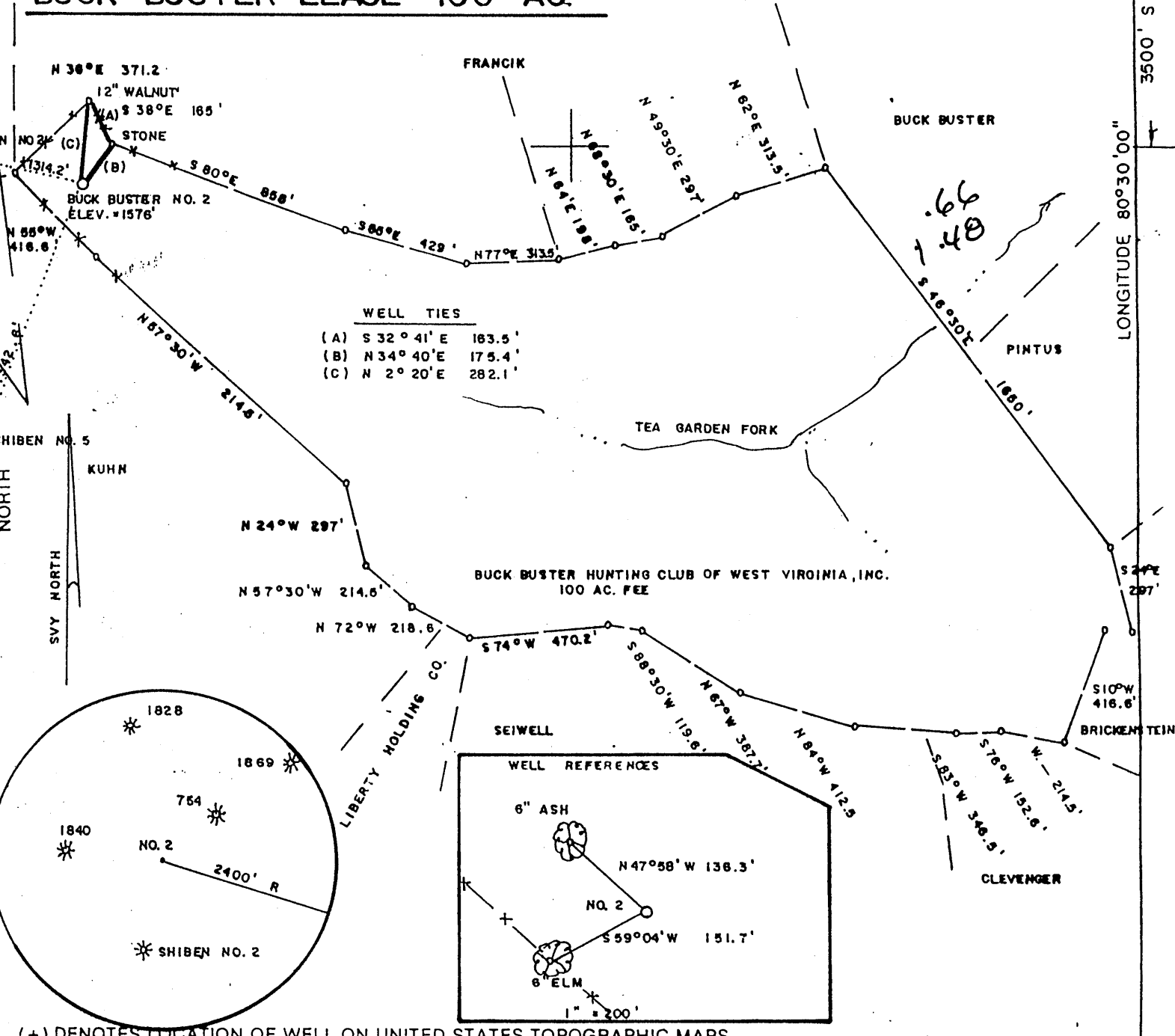


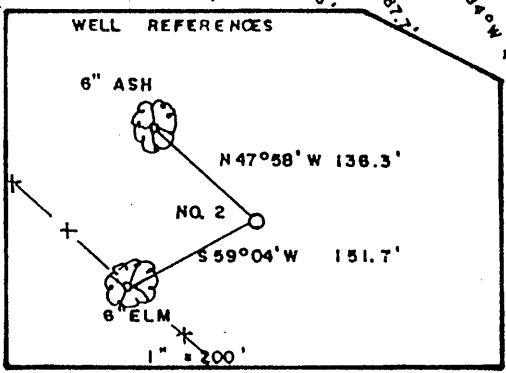
7790' W  
LATITUDE 38° 37' 30"

**BUCK BUSTER LEASE 100 AC.**



**WELL TIES**

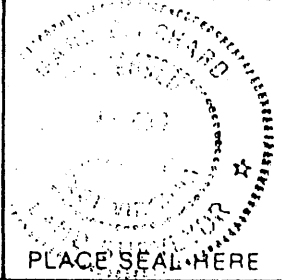
(A)	S 32° 41' E	183.5'
(B)	N 34° 40' E	175.4'
(C)	N 2° 20' E	282.1'



(+) DENOTES LOCATION OF WELL ON UNITED STATES TOPOGRAPHIC MAPS

FILE NO. \_\_\_\_\_  
 DRAWING NO. \_\_\_\_\_  
 SCALE 1" = 500'  
 MINIMUM DEGREE OF ACCURACY 1/200  
 PROVEN SOURCE OF ELEVATION TOP OF KNOB  
 WEST OF LEASE ELEV = 1635'

I THE UNDERSIGNED, HEREBY CERTIFY THAT THIS PLAT IS CORRECT TO THE BEST OF MY KNOWLEDGE AND BELIEF AND SHOWS ALL THE INFORMATION REQUIRED BY LAW AND THE REGULATIONS ISSUED AND PRESCRIBED BY THE DEPARTMENT OF ENERGY.  
 (SIGNED) Mark C. Echard  
 R.P.E. \_\_\_\_\_ L.L.S. 490



STATE OF WEST VIRGINIA  
 Division of Environmental Protection  
 OFFICE OF OIL AND GAS

DATE JUNE 13, 2002  
 OPERATOR'S WELL NO. BUCK BUSTER NO. 2  
 API WELL NO. 47-103-01884

WELL TYPE: OIL \_\_\_ GAS \_\_\_ LIQUID INJECTION \_\_\_ WASTE DISPOSAL \_\_\_  
 (IF "GAS") PRODUCTION  STORAGE \_\_\_ DEEP \_\_\_ SHALLOW

LOCATION: ELEVATION 1576' WATERSHED TEA GARDEN FORK  
 DISTRICT CHURCH COUNTY WETZEL  
 QUADRANGLE 21C JUN

SURFACE OWNER BUCK BUSTER HUNTING CLUB OF WEST VIRGINIA, INC. ACREAGE 100  
 OIL & GAS ROYALTY OWNER BUCK BUSTER HUNTING CLUB OF WV, INC. LEASE ACREAGE 100  
 LEASE NO. \_\_\_\_\_

PROPOSED WORK: DRILL  CONVERT \_\_\_ DRILL DEEPER \_\_\_ REDRILL \_\_\_ FRACTURE OR STIMULATE  PLUG OFF OLD FORMATION \_\_\_ PERFORATE NEW FORMATION \_\_\_ OTHER PHYSICAL CHANGE IN WELL (SPECIFY) \_\_\_\_\_

PLUG AND ABANDON \_\_\_ CLEAN OUT AND REPLUG \_\_\_  
 TARGET FORMATION SPEECHLEY ESTIMATED DEPTH 3900'  
 WELL OPERATOR D.A.C. DESIGNATED AGENT MR. KENNETH MASON  
 ADDRESS P.O. BOX 99 ADDRESS P.O. BOX 99  
ALMA, WV 26320 ALMA, WV 26320

COUNTY NAME WET  
 PERMIT 1884

WR-35  
Rev (5-01)

DATE: 11-19-02  
API #: 47-103-01884

State of West Virginia  
Department of Environmental Protection  
Office of Oil and Gas

*MT*

Well Operator's Report of Well Work

Farm name: WV Hunting Club

Operator Well No.: Buck Buster #2

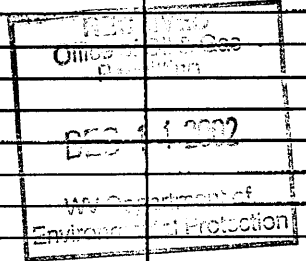
LOCATION: Elevation: 1576'

Quadrangle: Big Run 7.5'

District: Church  
Latitude: 3,500 Feet South of  
Longitude 7,790 Feet West of

County: Wetzel  
39 Deg. 37 Min. 30 Sec.  
80 Deg. 30 Min. 00 Sec.

Company:	Casing & Tubing	Used in drilling	Left in well	Cement fill up Cu. Ft.
Drilling Appalachian Company				
Address:				
P.O. Box 99 Alma WV 26320	9 5/8	225	212	68sks
Agent: Kenneth Mason				
Inspector: Randy Mick	6 5/8	1925	1889	100sks
Date Permit Issued: 06/24/02				
Date Well Work Commenced: 08/09/02	4 1/2	3841	3633	170 sks
Date Well Work Completed: 08/14/02				
Verbal Plugging:				
Date Permission granted on:				
Rotary X Cable Rig				
Total Depth (feet): 3841'				
Fresh Water Depth (ft.): 115' 2,145'				
Salt Water Depth (ft.): N/A				
Is coal being mined in area (N/Y)? N				
Coal Depths (ft.): 995-999				



OPEN FLOW DATA

Producing formation Gordon/4th Pay zone depth (ft) 3415-3470  
 Gas: Initial open no show MCF/d Oil: Initial open flow \_\_\_\_\_ Bbl/d  
 Final open flow 350 MCF/d Final open flow \_\_\_\_\_ Bbl/d  
 Time of open flow between initial and final tests \_\_\_\_\_ Hours  
 Static rock Pressure 450# psig (surface pressure) after 48 Hours

Second producing formation Big Injun Pay zone depth (ft) 2650-2700  
 Gas: Initial open flow \* \_\_\_\_\_ MCF/d Oil: Initial open flow \_\_\_\_\_ Bbl/d  
 Final open flow \* \_\_\_\_\_ MCF/d Final open flow \_\_\_\_\_ Bbl/d  
 Time of open flow between initial and final tests \_\_\_\_\_ Hours  
 Static rock Pressure \_\_\_\_\_ psig (surface pressure) after \_\_\_\_\_ Hours

\* = commingled zones

NOTE: ON BACK OF THIS FORM PUT THE FOLLOWING: 1). DETAILS OF PERFORATED INTERVALS, FRACTURING OR STIMULATING, PHYSICAL CHANGE, ETC. 2). THE WELL LOG WHICH IS A SYSTEMATIC DETAILED GEOLOGICAL RECORD OF ALL FORMATIONS,

Signed: Drilling Appalachian Corp  
By: Kenneth R. Mason

JAN 17 2003

WET 1884

Buck Buster #2  
08-20-02

Stage #1	perfs	sand	avg rate	isip
Gordon 4th	3415-3472	200 sks	24 bpm	3579
Stage #2 Big Injun	2650-2700	200 sks	24 bpm	2650

Drillers Log

Electric Log Tops

Fill	0	25	
Sd/Sh	25	170	
Sd	170	200	
Sd/Sh	200	995	wet @ 2,145'
Coal	995	999	
Sd/Sh	999	1515	
RR	1515	1925	
Sd/Sh	1925	2128	
Sd	2128	2520	
LL	2520	2530	
Sd/Sh	2530	2550	
BL	2550	2635	gas ck @ 2833' = no show
Sd	2635	2820	
Sd/Sh	2820	3305	
Sd	3305	3329	
Sd/Sh	3329	3412	
Sd	3412	3440	
Sd/Sh	3440	3673	
Td	3841		gas ck @ TD = odor

Big Lime	2554
Berea	2948
Gordon	3574

