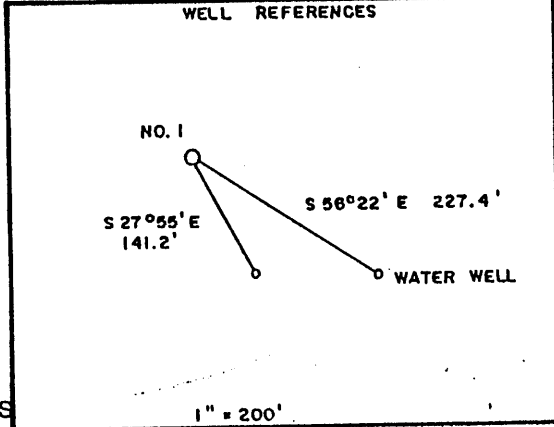
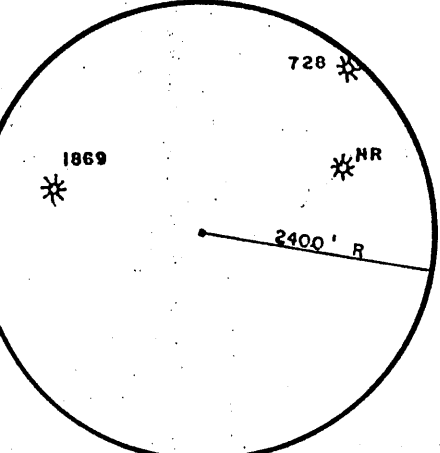
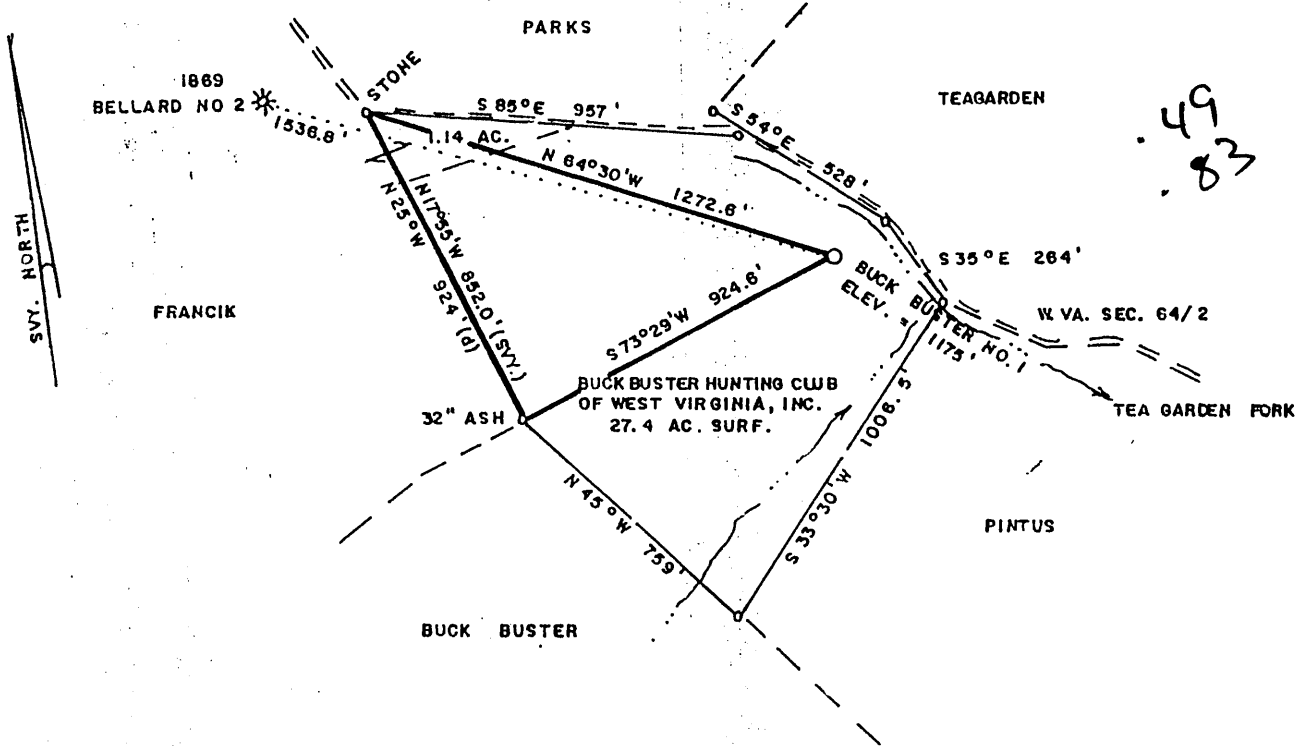


**BUCK BUSTER LEASE 27.4 AC.**

4400' W  
LATITUDE 39° 37' 30"

S. 0092  
LONGITUDE 80° 03' 00"



(+) DENOTES LOCATION OF WELL ON UNITED STATES TOPOGRAPHIC MAPS

FILE NO. \_\_\_\_\_  
DRAWING NO. \_\_\_\_\_  
SCALE 1" = 500'  
MINIMUM DEGREE OF ACCURACY 1/200  
PROVEN SOURCE OF ELEVATION TOP OF KNOB  
WEST OF LEASE ELEV. = 1635'

I THE UNDERSIGNED, HEREBY CERTIFY THAT THIS PLAT IS CORRECT TO THE BEST OF MY KNOWLEDGE AND BELIEF AND SHOWS ALL THE INFORMATION REQUIRED BY LAW AND THE REGULATIONS ISSUED AND PRESCRIBED BY THE DEPARTMENT OF ENERGY.  
(SIGNED) Mark C. Echard  
R.P.E. \_\_\_\_\_ L.L.S. 490

WELL REFERENCES  
NO. 1  
S 27° 55' E 141.2'  
S 56° 22' E 227.4'  
WATER WELL  
1" = 200'  
PLACE SEAL HERE

STATE OF WEST VIRGINIA  
Division of Environmental Protection  
OFFICE OF OIL AND GAS

DATE JUNE 13, 2002  
OPERATOR'S WELL NO. BUCK BUSTER NO. 1  
API WELL NO. 47-103-01883  
STATE COUNTY PERMIT

WELL TYPE: OIL  GAS  LIQUID INJECTION  WASTE DISPOSAL   
(IF "GAS,") PRODUCTION  STORAGE  DEEP  SHALLOW

LOCATION: ELEVATION 1175' WATERSHED TEA GARDEN FORK  
DISTRICT CHURCH COUNTY WETZEL  
QUADRANGLE BIG RUN 7.5'

SURFACE OWNER BUCK BUSTER HUNTING CLUB OF WEST VIRGINIA, INC. ACREAGE 27.4  
OIL & GAS ROYALTY OWNER BUCK BUSTER HUNTING CLUB OF WV, INC ET AL LEASE ACREAGE 27.4  
LEASE NO. \_\_\_\_\_

PROPOSED WORK: DRILL  CONVERT  DRILL DEEPER  REDRILL  FRACTURE OR STIMULATE  PLUG OFF OLD FORMATION  PERFORATE NEW FORMATION  OTHER PHYSICAL CHANGE IN WELL (SPECIFY) \_\_\_\_\_

PLUG AND ABANDON  CLEAN OUT AND REPLUG   
TARGET FORMATION SPEECHLEY ESTIMATED DEPTH 3900'  
WELL OPERATOR D.A.C. DESIGNATED AGENT MR. KENNETH MASON  
ADDRESS P.O. BOX 99 ADDRESS P.O. BOX 99  
ALMA, WV 26320 ALMA, WV 26320

COUNTY NAME WET  
PERMIT 1883

WR-35  
Rev (5-01)

DATE: 11-19-02  
API #: 47-103-01883

State of West Virginia  
Department of Environmental Protection  
Office of Oil and Gas

*Ag*

Well Operator's Report of Well Work

Farm name: WV Hunting Club

Operator Well No.: Buck Buster #1

LOCATION: Elevation: 1175'

Quadrangle: Big Run 7.5'

District: Church  
Latitude: 2.600 Feet South of  
Longitude 4.400 Feet West of

County: Wetzel  
39 Deg. 07 Min. 30 Sec.  
80 Deg. 30 Min. 00 Sec.

Company:	Casing & Tubing	Used in drilling	Left in well	Cement fill up Cu. Ft.
Drilling Appalachian Company				
Address:				
P.O. Box 99 Alma WV 26320	9 5/8	225	215	68sks
Agent: Kenneth Mason				
Inspector: Randy Mick	6 5/8	1500	1487	100sks
Date Permit Issued: 06/26/02				
Date Well Work Commenced: 08/01/02	4 1/2	3625	3367	170 sks
Date Well Work Completed: 08/07/02				
Verbal Plugging:				
Date Permission granted on:				
Rotary X Cable Rig				
Total Depth (feet): 3625'				
Fresh Water Depth (ft.): 47' 1,712'				
Salt Water Depth (ft.): N/A				
Is coal being mined in area (N/Y)? N				
Coal Depths (ft.): N/A				

Office of Oil and Gas  
Permit  
DEC 14 2002  
WV Dept. of Environmental Protection

OPEN FLOW DATA

Producing formation Gordon/4th Pay zone depth (ft) 3000-3100  
 Gas: Initial open 112 MCF/d Oil: Initial open flow \_\_\_\_\_ Bbl/d  
 Final open flow 550 MCF/d Final open flow \_\_\_\_\_ Bbl/d  
 Time of open flow between initial and final tests \_\_\_\_\_ Hours  
 Static rock Pressure 600# psig (surface pressure) after 48 Hours

Second producing formation Big Injun Pay zone depth (ft) 2210-2270  
 Gas: Initial open flow \* \_\_\_\_\_ MCF/d Oil: Initial open flow \_\_\_\_\_ Bbl/d  
 Final open flow \* \_\_\_\_\_ MCF/d Final open flow \_\_\_\_\_ Bbl/d  
 Time of open flow between initial and final tests \_\_\_\_\_ Hours  
 Static rock Pressure \_\_\_\_\_ psig (surface pressure) after \_\_\_\_\_ Hours

\* = commingled zones

NOTE: ON BACK OF THIS FORM PUT THE FOLLOWING: 1). DETAILS OF PERFORATED INTERVALS, FRACTURING OR STIMULATING, PHYSICAL CHANGE, ETC. 2). THE WELL LOG WHICH IS A SYSTEMATIC DETAILED GEOLOGICAL RECORD OF ALL FORMATIONS,

Signed: Drilling Appalachian Corp.  
By: Kenneth P. Mason

JAN 17 2003

WET 1883

Buck Buster #1  
08-13-02

Stage #1	perfs	sand	avg rate	lsip
Gordon 4th	3002-3218	250 sks	28 bpm	2822
Stage #2 Big Injun	2214-2270	250 sks	28 bpm	2553

Drillers Log

Fill	0	17
Sd/Sh	17	80
Sd	80	300
Sd/Sh	300	1180
RR	1180	1210
Sd/Sh	1210	1300
RR	1300	1350
Sd/Sh	1350	1870
Sd	1870	1932
Sd/Sh	1932	2097
LL	2097	2115
Sd/Sh	2115	2125
BL	2125	2175
Sd	2175	2400
Sd/Sh	2400	2620
Sd	2620	2649
Sd/Sh	2649	2950
Sd <i>Gordon</i>	2950	3020
Sd/Sh	3020	3046
Sd	3046	3087
Sd/Sh	3087	3247
Sd	3247	3280
Sd/Sh	3280	3525
Td	3525	

Electric Log Tops

Big Lime	2182
Berea	2520
Gordon	2950

wet @ 1,712'

gas ck @ 2380' = 8/10 - 2" w/w

gas ck @ 3046' = 12/10 - 2" w/w

gas ck @ TD = 10/10 2" w/w

