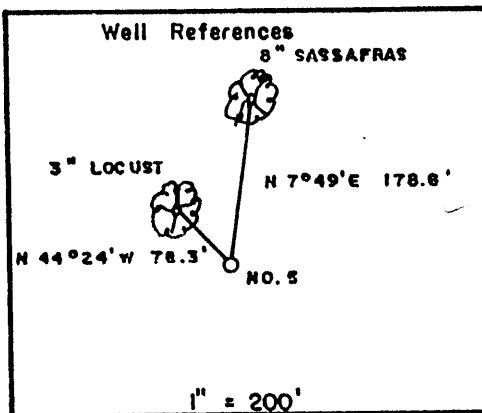
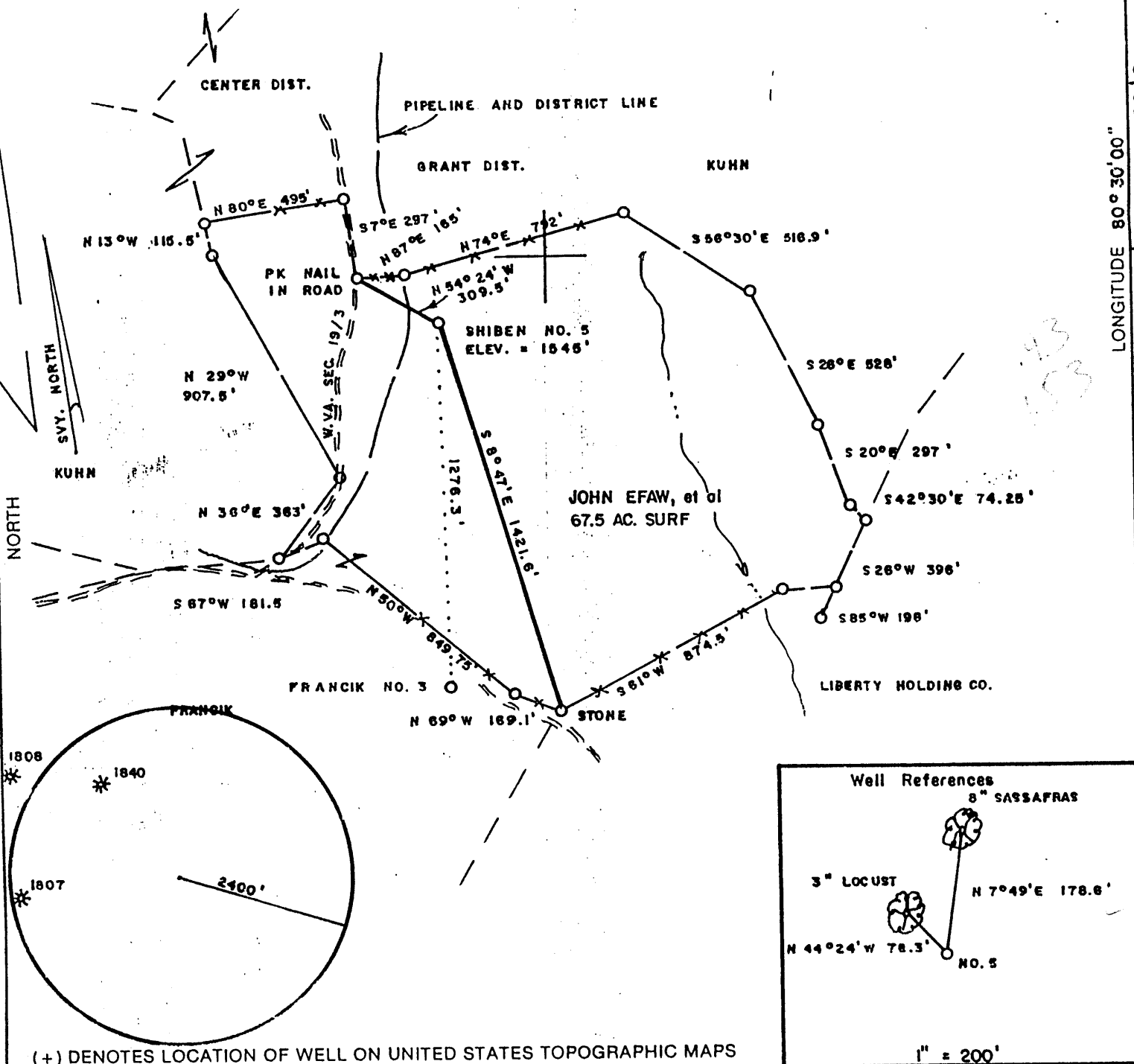


8100' W  
LATITUDE 39° 37' 30"

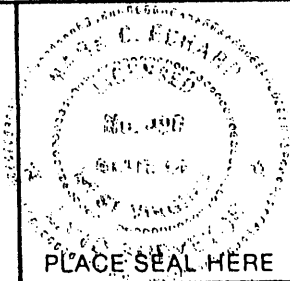
**SHIBEN LEASE 67.5 AC.**



(+) DENOTES LOCATION OF WELL ON UNITED STATES TOPOGRAPHIC MAPS

FILE NO. \_\_\_\_\_  
DRAWING NO. \_\_\_\_\_  
SCALE 1" = 500'  
MINIMUM DEGREE OF ACCURACY 1/200  
PROVEN SOURCE OF ELEVATION BM WEST OF LEASE  
ELEV. = 1541'

I THE UNDERSIGNED, HEREBY CERTIFY THAT THIS PLAT IS CORRECT TO THE BEST OF MY KNOWLEDGE AND BELIEF AND SHOWS ALL THE INFORMATION REQUIRED BY LAW AND THE REGULATIONS ISSUED AND PRESCRIBED BY THE DEPARTMENT OF ENERGY.  
(SIGNED) Mark C. Echard  
R.P.E. \_\_\_\_\_ L.L.S. 490



STATE OF WEST VIRGINIA  
Division of Environmental Protection  
OFFICE OF OIL AND GAS



DATE MAY 7, 2002  
OPERATOR'S WELL NO. SHIBEN NO. 5  
API WELL NO. \_\_\_\_\_

WELL TYPE: OIL \_\_\_ GAS \_\_\_ LIQUID INJECTION \_\_\_ WASTE DISPOSAL \_\_\_  
(IF "GAS,") PRODUCTION \_\_\_ STORAGE \_\_\_ DEEP \_\_\_ SHALLOW \_\_\_

LOCATION: ELEVATION 1545' WATERSHED RACCOON RUN OF WILLEY FORK  
DISTRICT GRANT COUNTY WE'ZEL  
QUADRANGLE BIG RUN 7.5'

SURFACE OWNER JOHN EFAW, et al ACREAGE 67.5  
OIL & GAS ROYALTY OWNER MINNIE SHIBEN ESTATE LEASE ACREAGE 67.5

PROPOSED WORK: DRILL \_\_\_ CONVERT \_\_\_ DRILL DEEPER \_\_\_ REDRILL \_\_\_ FRACTURE OR STIMULATE \_\_\_ PLUG OFF OLD FORMATION \_\_\_ PERFORATE NEW FORMATION \_\_\_ OTHER PHYSICAL CHANGE IN WELL (SPECIFY) \_\_\_\_\_

PLUG AND ABANDON \_\_\_ CLEAN OUT AND REPLUG \_\_\_  
TARGET FORMATION SPEECHLEY ESTIMATED DEPTH 3900'  
WELL OPERATOR D.A.C. DESIGNATED AGENT MR. KENNY MASON  
ADDRESS P.O. BOX 99 ADDRESS P.O. BOX 99  
ALMA, WV 26320 ALMA, WV 26320

LONGITUDE 80° 03' 08"

COUNTY NAME WE'ZEL  
PERMIT 1879

6-6 46

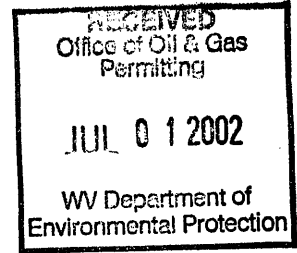
*A2B*

State of West Virginia  
Division of Environmental Protection  
Section of Oil and Gas

Review

Well Operators Report of Well Work

Farm name: Shiben Operator Well #: Shiben #5  
Location: Elevation: 1,545' Quadrangle: Big Run 7.5'  
District: Grant County: Wetzel  
Latitude 8,100 feet south of 39 Deg. 37 Min. 30 Sec.  
Longitude 4,800 feet west of 80 Deg. 30 Min. 00 Sec.  
Company: Drilling Appalachian Corporation  
P.O. Box 99  
Alma WV 26320



Agent:	Kenneth Mason	Casing	Used in Drilling	Left in Well	Cement Fill up
Inspector:	Randall Mick				
Permit Issued:	05-29-021	9 5/8	225	214	68 sks
Well Work Commenced:	06-12-02				
Well Work Completed:	06-17-02	6 5/8	1877	1716	100 sks
Verbal Plugging					
Permission granted on:		4 1/2	3612	3498	170 sks
Rotary X Cable	___ Rig				
Total Depth (ft)	3778'				
Fresh water depth (ft)	42'				
Salt water depth (ft)	N/A				
Is coal being mined in are (Y/N)	N				
Coal depths (ft)	N/A				

OPEN FLOW DATA

Producing formation 4<sup>th</sup>/Gordon Pay zone depths (ft) 3380-3458  
Gas: Initial open flow odor mcf/d Oil: Initial open flow bbls/day  
Final open flow 120 mcf/d Final open flow bbls/day  
Time of open flow between initial and final tests 48 Hours  
Static rock pressure 450# psig (surface pressure) after 48 Hours

Other producing formation Pay zone depths (ft)  
Gas: Initial open flow x mcf/day Oil: Initial open flow bbls/day  
Final open flow x mcf/day Final open flow bbls/day  
Time of open flow between initial and final tests 48 Hours  
Static rock pressure psig (surface pressure) after 48 Hours

For: Drilling Appalachian Corporation

By: *Kenneth Mason*

Date: 06-30-02

JUL 7 2002

WET 1879

Shiben #5  
06-25-02

Stage #1	perfs	sand	avg rate	isip
Gordon 4th	3381-3446	300 sks	24 bpm	3042#

Drillers Log

Sh	0	5	
Sd	5	219	
RR	219	248	
Sd/Sh	248	780	
RR	780	895	
Sd/Sh	895	1478	½" strm 42'
RR	1478	1504	damp 2283'
Sd/Sh	1504	1588	
RR	1588	1623	
Sd/Sh	1623	2355	
Sd	2355	2408	
RR	2408	2488	
Lime	2488	2508	
Lime	2508	2604	gas ck @ 2737' = odor
Sd	2604	2729	
Sd/Sh	2729	2745	
Sd	2745	2775	
Sd/Sh	2775	3778	gas ck @ 2858' =odor
Td	3777		

Electric Log Tops

Big Lime	2510
Berea	2902
Gordon	3326