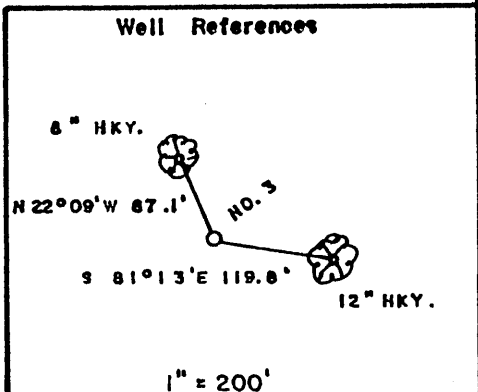
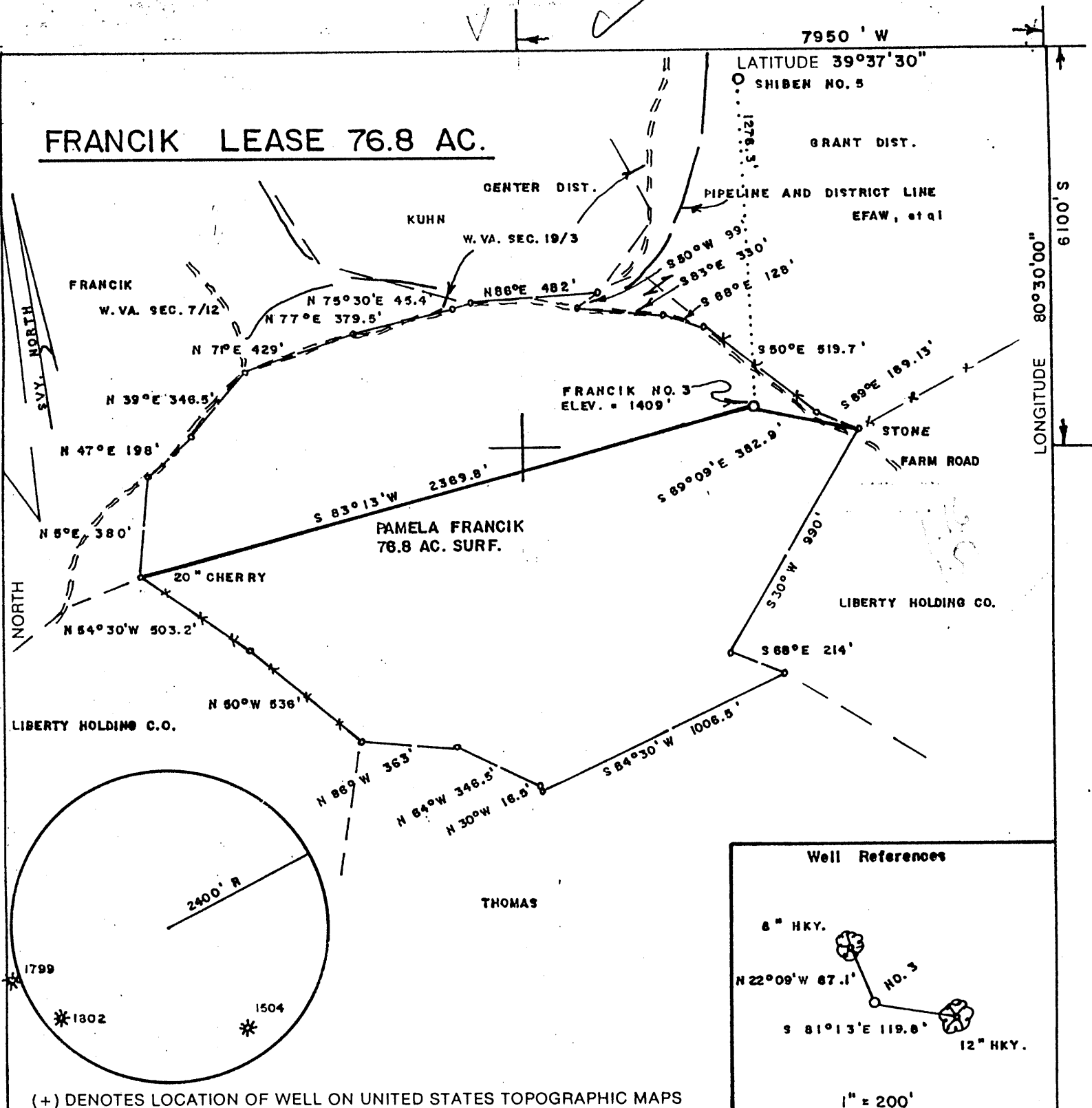


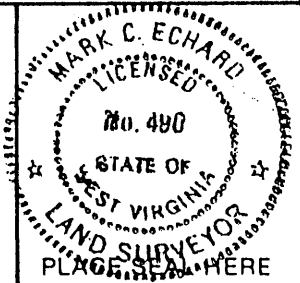
FRANCIK LEASE 76.8 AC.



(+) DENOTES LOCATION OF WELL ON UNITED STATES TOPOGRAPHIC MAPS

FILE NO. _____
 DRAWING NO. _____
 SCALE 1" = 500'
 MINIMUM DEGREE OF ACCURACY 1/200
 PROVEN SOURCE OF ELEVATION BM WEST OF LEASE
ELEV. = 1541'

I THE UNDERSIGNED, HEREBY CERTIFY THAT THIS PLAT IS CORRECT TO THE BEST OF MY KNOWLEDGE AND BELIEF AND SHOWS ALL THE INFORMATION REQUIRED BY LAW AND THE REGULATIONS ISSUED AND PRESCRIBED BY THE DEPARTMENT OF ENERGY.
 (SIGNED) Mark C. Echard
 R.P.E. _____ L.L.S. 490



STATE OF WEST VIRGINIA
 Division of Environmental Protection
 OFFICE OF OIL AND GAS



DATE MAY 7 2002
 OPERATOR'S WELL NO. FRANCIK NO. 3
 API WELL NO. _____

WELL TYPE: OIL ___ GAS ___ LIQUID INJECTION ___ WASTE DISPOSAL ___
 (IF "GAS") PRODUCTION STORAGE ___ DEEP ___ SHALLOW

LOCATION: ELEVATION 1409' WATERSHED RACCOON RUN OF WILLEY FORK
 DISTRICT GRANT COUNTY WETZEL

QUADRANGLE BIG RUN
 SURFACE OWNER PAMELA FRANCIK ACREAGE 76.8

OIL & GAS ROYALTY OWNER PAMELA FRANCIK, et al LEASE ACREAGE 76.8

PROPOSED WORK: DRILL CONVERT ___ DRILL DEEPER ___ REDRILL ___ FRACTURE OR STIMULATE PLUG OFF OLD FORMATION ___ PERFORATE NEW FORMATION ___ OTHER PHYSICAL CHANGE IN WELL (SPECIFY) _____

PLUG AND ABANDON ___ CLEAN OUT AND REPLUG ___
 TARGET FORMATION SPEECHLEY ESTIMATED DEPTH 3900'

WELL OPERATOR D. A.C. DESIGNATED AGENT MR. KENNETH MASON
 ADDRESS P.O. BOX 99 ADDRESS P.O. BOX 99

ALMA, WV 26320 ALMA, WV 26320 **MAY 31 2002**

LONGITUDE 00,03,08

COUNTY NAME WET

PERMIT 1878

look 46

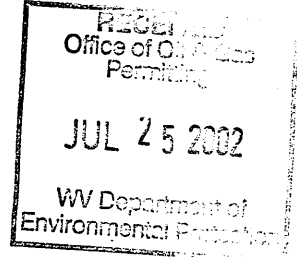
MTS

State of West Virginia
Division of Environmental Protection
Section of Oil and Gas

Well Operators Report of Well Work

Farm name: Francik Operator Well #: Francik #3
Location: Elevation: 1,409' Quadrangle: Big Run 7.5'
District: Grant County: Wetzel
Latitude 6,100 feet south of 39 Deg. 37 Min. 30 Sec.
Longitude 7,950 feet west of 80 Deg. 30 Min. 00 Sec.

Company: Drilling Appalachian Corporation
P.O. Box 99
Alma WV 26320



Agent:	Kenneth Mason	Casing	Used in Drilling	Left in Well	Cement Fill up
Inspector:	Randall Mick				
Permit Issued:	05-29-02	9 5/8	225	214	68 sks
Well Work Commenced:	06-12-02				
Well Work Completed:	06-17-02	6 5/8	1700	1688	100 sks
Verbal Plugging					
Permission granted on:		4 1/2	3665	3572	170 sks
Rotary X Cable	___ Rig				
Total Depth (ft)	3665'				
Fresh water depth (ft)	225'				
Salt water depth (ft)	N/A				
Is coal being mined in are (Y/N)	N				
Coal depths (ft)	1075-1081				

OPEN FLOW DATA

Producing formation	4 th /Gordon	Pay zone depths (ft)	3248-3426
Gas: Initial open flow	183 mcf/d	Oil: Initial open flow	bbls/day
Final open flow	474 mcf/d	Final open flow	bbls/day
Time of open flow between initial and final tests			48 Hours
Static rock pressure	450# psig (surface pressure) after		48 Hours

Other producing formation	Big Injun	Pay zone depths (ft)	2464-2484
Gas: Initial open flow	x mcf/day	Oil: Initial open flow	bbls/day
Final open flow	x mcf/day	Final open flow	bbls/day
Time of open flow between initial and final tests			48 Hours
Static rock pressure	psig (surface pressure) after		48 Hours

X = commingled zones

For: Drilling Appalachian Corporation

By: *Kenneth Mason*
Date: 07-15-02

WET 1878

Shiben #5
07-15-02

Stage #1	perfs	sand	avg rate	isip
Gordon 4 th	3252-3430 15 holes	200 sks	24 bpm	2402#
Big Injun	2466-2486 15 holes	250 sks	24 bpm	2205#

Drillers Log

Sh	0	5	
Sd	5	40	
Sd/Sh	40	1009	
Sd	1009	1075	
Coal	1075	1081	damp 42'
Sd/Sh	1081	1246	1 1/4" 255'
RR	1246	1302	
Sd/Sh	1302	1467	
RR	1467	1558	
Sd/Sh	1558	1975	
Sd	1975	2070	
Sd/Sh	2070	2388	
Lime	2388	2385	gas ck @ 2737' = odor
Sd	2385	2474	
Sd/Sh	2474	3213	
Sd	3213	3254	
Sd/Sh	3254	3298	gas ck @ 2858' =odor
Sd	3298	3342	
Sd/Sh	3342	3655	
Td	3655		

Electric Log Tops

Big Lime	2383
Berea	2720
Gordon	3204