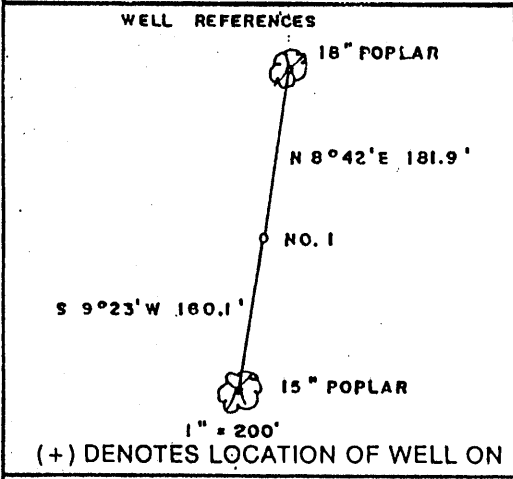
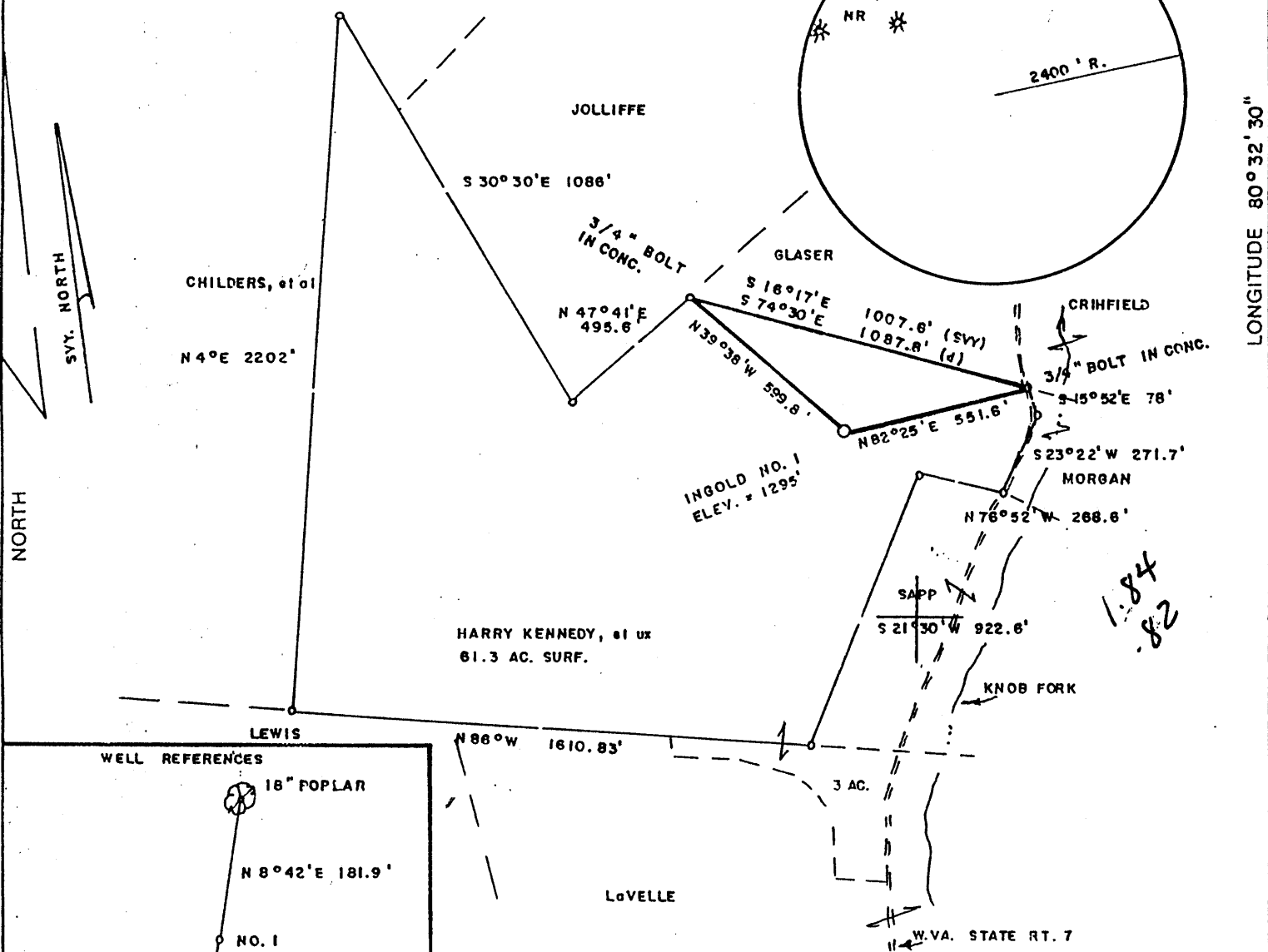


**INGOLD LEASE 61.3 AC.**

4350' W  
LATITUDE 39°40'00"

LONGITUDE 80°32'30"



FILE NO. \_\_\_\_\_  
 DRAWING NO. \_\_\_\_\_  
 SCALE 1" = 500'  
 MINIMUM DEGREE OF ACCURACY 1/200  
 PROVEN SOURCE OF ELEVATION BM - EAST SIDE OF LEASE  
 ELEV. = 1080'

I THE UNDERSIGNED, HEREBY CERTIFY THAT THIS PLAT IS CORRECT TO THE BEST OF MY KNOWLEDGE AND BELIEF AND SHOWS ALL THE INFORMATION REQUIRED BY LAW AND THE REGULATIONS ISSUED AND PRESCRIBED BY THE DEPARTMENT OF ENERGY.  
 (SIGNED) Mark C. Echard  
 R.P.E. \_\_\_\_\_ L.L.S. 490



STATE OF WEST VIRGINIA  
 Division of Environmental Protection  
 OFFICE OF OIL AND GAS

DATE NOVEMBER 1, 2001  
 OPERATOR'S WELL NO. INGOLD NO. 1  
 API WELL NO. 47 103 01868  
 STATE COUNTY PERMIT

WELL TYPE: OIL  GAS  LIQUID INJECTION  WASTE DISPOSAL   
 (IF "GAS") PRODUCTION  STORAGE  DEEP  SHALLOW

LOCATION: ELEVATION 1295' WATERSHED KNOB FORK  
 DISTRICT CENTER COUNTY WETZEL  
 QUADRANGLE LITTLETON 75'

SURFACE OWNER HARRY KENNEDY, et ux ACREAGE 61.3  
 OIL & GAS ROYALTY OWNER PATRICIA INGOLD, et al LEASE ACREAGE 61.3  
 LEASE NO. \_\_\_\_\_

PROPOSED WORK: DRILL  CONVERT  DRILL DEEPER  REDRILL  FRACTURE OR STIMULATE  PLUG OFF OLD FORMATION  PERFORATE NEW FORMATION  OTHER PHYSICAL CHANGE IN WELL (SPECIFY) \_\_\_\_\_

PLUG AND ABANDON  CLEAN OUT AND REPLUG

TARGET FORMATION SPEECHLEY ESTIMATED DEPTH 3900'  
 WELL OPERATOR D.A.C. DESIGNATED AGENT KENNETH MASON **NOV 06 2001**  
 ADDRESS P.O. BOX 9J ADDRESS P.O. BOX 9J  
ALMA, WV 26320 ALMA, WV 26320

State of West Virginia  
Department of Environmental Protection  
Office of Oil and Gas

Revision *12/13*

Well Operator's Report of Well Work

Farm name: Ingold

Operator Well No. Ingold#1

LOCATION: Elevation: 1295'

Quadrangle: Littleton 7.5'

District: Center County: Wetzel  
Latitude: 9690 Feet South of 39 Deg. 40 Min. 00 Sec.  
Longitude 4350 Feet West of 80 Deg. 32 Min. 30 Sec.

Company: D.A.C.

	Casing & Tubing	Used in drilling	Left in well	Cement fill up Cu. Ft.
Address: P.O. Box 99				
Alma, WV 26320	9 5/8	217	217	68 sks
Agent: Kenneth Mason	6 5/8	1649	1649	100 sks
Inspector: Randall Mick	4 1/2	1997	1997	50 sks
Date Permit Issued: 11/07/01				
Date Well Work Commenced: 11/16/01				
Date Well Work Completed: 11/29/01				
Verbal Plugging:				
Date Permission granted on:				
Rotary X Cable Rig				
Total Depth (feet): 2013'				
Fresh Water Depth (ft.): 1882				
Salt Water Depth (ft.):				
Is coal being mined in area (N/Y)? N				
Coal Depths (ft.): 1049				

OPEN FLOW DATA

Producing formation Salt Sand Pay zone depth (ft) 1930-1974  
Gas: Initial open flow 10 MMCF/d Oil: Initial open flow \_\_\_\_\_ Bbl/d  
Final open flow 600 MCF/d Final open flow \_\_\_\_\_ Bbl/d  
Time of open flow between initial and final tests \_\_\_\_\_ Hours  
Static rock Pressure 400 psig (surface pressure) after 48 Hours

Second producing formation \_\_\_\_\_ Pay zone depth (ft) \_\_\_\_\_  
Gas: Initial open flow \_\_\_\_\_ MCF/d Oil: Initial open flow \_\_\_\_\_ Bbl/d  
Final open flow \_\_\_\_\_ MCF/d Final open flow \_\_\_\_\_ Bbl/d  
Time of open flow between initial and final tests \_\_\_\_\_ Hours  
Static rock Pressure \_\_\_\_\_ psig (surface pressure) after \_\_\_\_\_ Hours

NOTE: ON BACK OF THIS FORM PUT THE FOLLOWING: 1). DETAILS OF PERFORATED INTERVALS, FRACTURING OR STIMULATING, PHYSICAL CHANGE, ETC. 2). THE WELL LOG WHICH IS A SYSTEMATIC DETAILED GEOLOGICAL RECORD OF ALL FORMATIONS, INCLUDING COAL ENCOUNTERED BY THE WELLBORE.

Signed: D.A.C. Kenny Mason  
By: Kenny Mason

MAR 08 2002

WET 1868

API # 47-103-01868  
Ingold #1

Stage #1	Perfs	sand sks
Salt Sand	1948-1978	1,000 gal hcl

ISIP = 2300#

Drillers Log

Electric Log Tops

Sand	0 - 5'
Sd/Sh	5'- 170'
Sd	170'- 300'
Sd/Sh	300'- 780'
RR	780'- 810'
Sd/Sh	810'- 915'
RR	915'- 930'
Sd/Sh	930'- 1049'
Coal	1049'-1057'
Sd/Sh	1057'-1179'
Sd	1179'-1189'
Sd/Sh	1189- 1229'
RR	1229- 1250'
Sd/Sh	1250'-1910'
Sd	1910- 2013' show gas @ 1952
Td	2013'