

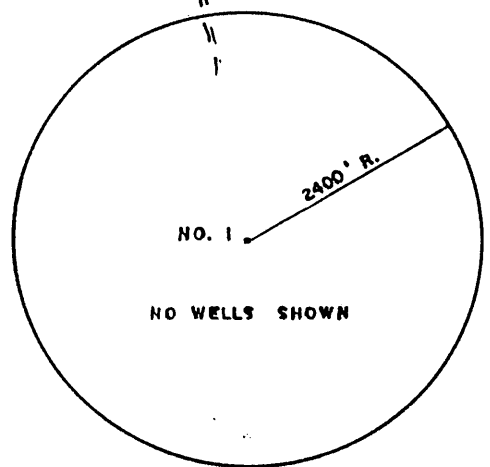
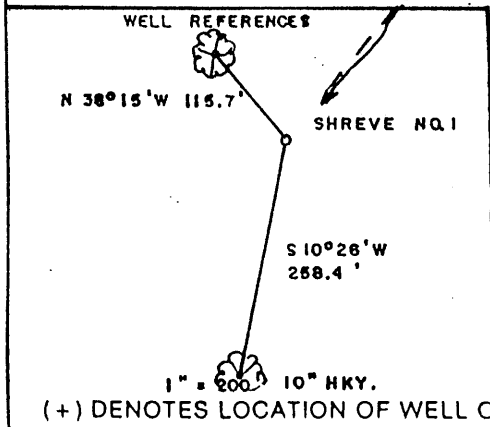
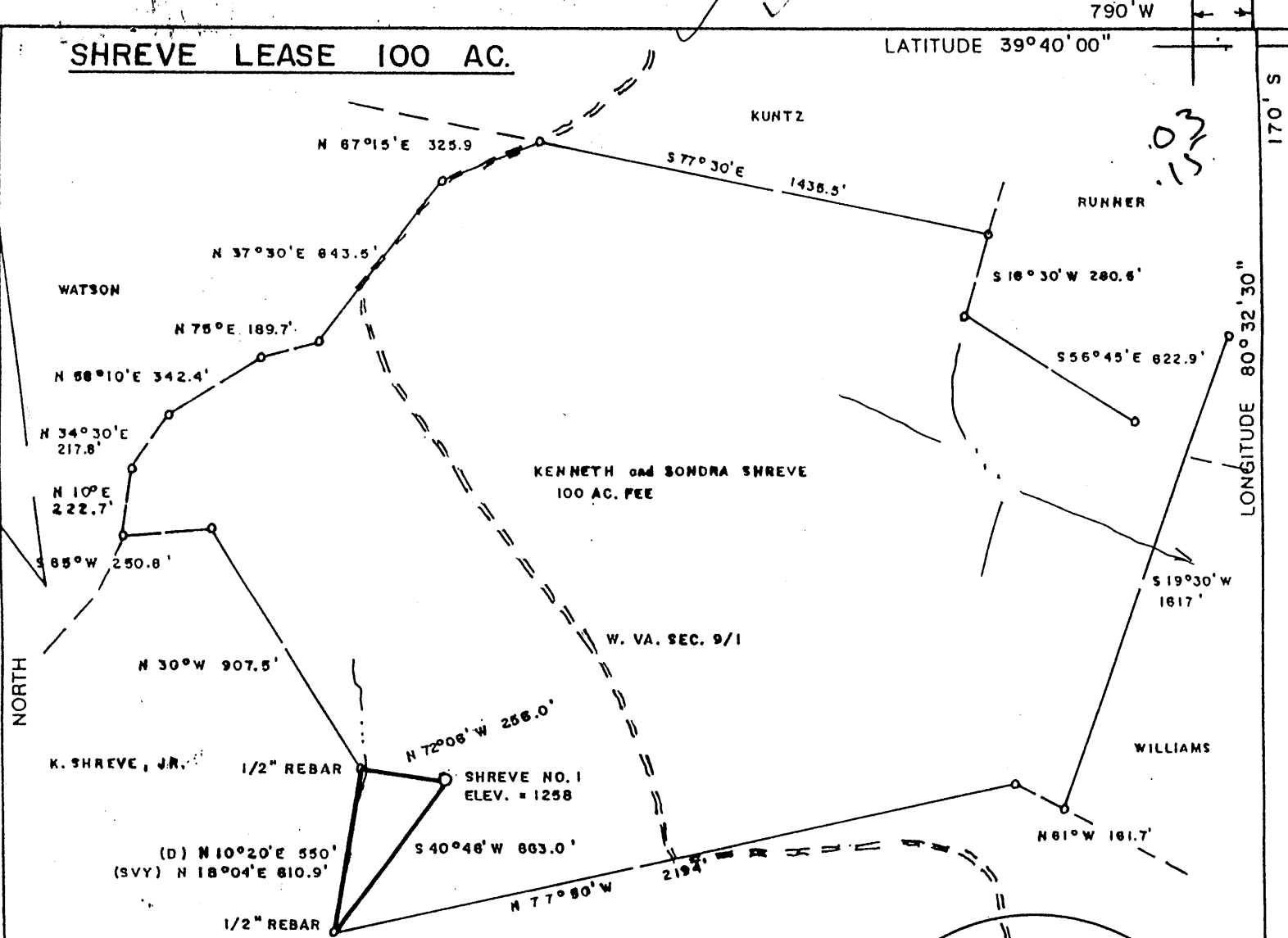
SHREVE LEASE 100 AC.

LATITUDE 39°40'00"

790' W

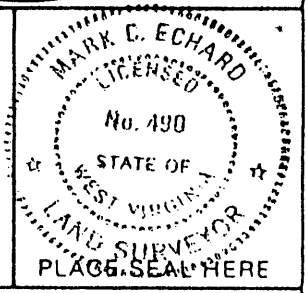
S. 071

03
15



FILE NO. _____
 DRAWING NO. _____
 SCALE 1" = 500'
 MINIMUM DEGREE OF ACCURACY 1/200
 PROVEN SOURCE OF ELEVATION JCT. OF ROADS NW
EDGE OF LEASE ELEV. = 1419'

I THE UNDERSIGNED, HEREBY CERTIFY THAT THIS PLAT IS CORRECT TO THE BEST OF MY KNOWLEDGE AND BELIEF AND SHOWS ALL THE INFORMATION REQUIRED BY LAW AND THE REGULATIONS ISSUED AND PRESCRIBED BY THE DEPARTMENT OF ENERGY.
 (SIGNED) Mark C. Echard
 R.P.E. _____ L.L.S. 490



STATE OF WEST VIRGINIA
 Division of Environmental Protection
 OFFICE OF OIL AND GAS

DATE AUGUST 20, 2001
 OPERATOR'S WELL NO. NO. 1
 API WELL NO. 47-103-01859
 STATE 47 COUNTY 103 PERMIT 01859

WELL TYPE: OIL GAS LIQUID INJECTION WASTE DISPOSAL
 (IF "GAS.") PRODUCTION STORAGE DEEP SHALLOW
 LOCATION: ELEVATION 1258' WATERSHED NOB FORK
CLAY COUNTY WETZEL
 QUADRANGLE LITTLETON 7.5

SURFACE OWNER KENNETH AND SONDR A SHREVE ACREAGE 100
 OIL & GAS ROYALTY OWNER KENNETH AND SONDR A SHREVE LEASE ACREAGE 100
 LEASE NO. _____

PROPOSED WORK: DRILL CONVERT DRILL DEEPER REDRILL FRACTURE OR STIMULATE PLUG OFF OLD FORMATION PERFORATE NEW FORMATION OTHER PHYSICAL CHANGE IN WELL (SPECIFY) _____

PLUG AND ABANDON CLEAN OUT AND REPLUG

TARGET FORMATION SPEECHLEY / BAYARD ESTIMATED DEPTH 3900'
 WELL OPERATOR D.A.C. DESIGNATED AGENT KENNETH MASON
 ADDRESS P.O. BOX 99 ADDRESS P.O. BOX 99
ALMA, WV 26320 ALMA, WV 26320

COUNTY NAME WETZEL
 PERMIT 1859

State of West Virginia
Department of Environmental Protection
Office of Oil and Gas

Reviewed ALB

Well Operator's Report of Well Work

Farm name: Kenneth Shreve, et ux

Operator Well No. Shreves #1

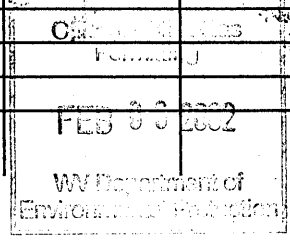
LOCATION: Elevation: 1258'

Quadrangle: Littleton 7.5'

District: Clay County: Wetzel
Latitude: 170 Feet South of 39 Deg. 40 Min. 00 Sec.
Longitude 790 Feet West of 80 Deg. 32 Min. 30 Sec.

Company: D.A.C.

	Casing & Tubing	Used in drilling	Left in well	Cement fill up Cu. Ft.
Address: P.O. Box 99	9-5/8"	200'	200'	55 sks
Alma, WV 26320	7"	1725'	1725'	100sks
Agent: Kenneth Mason	4-1/2"	3850'	3850'	150sks
Inspector: Randal Micks				
Date Permit Issued: 8/28/2001				
Date Well Work Commenced: 9/25/01				
Date Well Work Completed: 10/09/01				
Verbal Plugging:				
Date Permission granted on:				
Rotary Cable Rig X				
Total Depth (feet): 3522'				
Fresh Water Depth (ft.): 1060'				
Salt Water Depth (ft.):				
Is coal being mined in area (N/Y)? N				
Coal Depths (ft.): 708'-712'				



OPEN FLOW DATA

Producing formation Gordon Pay zone depth (ft) 2656-3188
Gas: Initial open flow 53 MCF/d Oil: Initial open flow _____ Bbl/d
Final open flow 119 MCF/d Final open flow _____ Bbl/d
Time of open flow between initial and final tests _____ Hours
Static rock Pressure 250 psig (surface pressure) after _____ Hours

Second producing formation Big Injun Pay zone depth (ft) 2330-2366
Gas: Initial open flow * MCF/d Oil: Initial open flow _____ Bbl/d
Final open flow * MCF/d Final open flow _____ Bbl/d
Time of open flow between initial and final tests _____ Hours
Static rock Pressure * psig (surface pressure) after _____ Hours

* = commingled zones

NOTE: ON BACK OF THIS FORM PUT THE FOLLOWING: 1). DETAILS OF PERFORATED INTERVALS, FRACTURING OR STIMULATING, PHYSICAL CHANGE, ETC. 2). THE WELL LOG WHICH IS A SYSTEMATIC DETAILED GEOLOGICAL RECORD OF ALL FORMATIONS, INCLUDING COAL ENCOUNTERED BY THE WELLBORE.

Signed: D.A.C. Kenny Mason
By: Kenny Mason

MAR 03 2002

WET 1859

API # 47-103-01859
 Shreves #1
 10/16/01

Stage #1	perfs	sand sks
Gordon	2656-3188 17 holes	200 sks
Stage #2		
Big Injun	2330-2366 15 holes	200 sks

ISIP 2633

Drillers Log

Electric Log Tops

Fill	0-5'		Big Lime	2222'
Shale	5'-20'		Gordon	3092'
Sand	20'-40'			
Sd/Sh	40'-77'			
RR	77'-117'			
Sd/Sh	117'-238'			
RR	238'-260'			
Sd/Sh	260'-380'			
RR/Sh	380'-425'			
Sd/Sh	425'-660'			
Coal	660'-664'			
Sd/Sh	664'-708'			
Coal	708'-712'			
Sd/Sh	712'-2200'	1/2" strm @ 1060'		
B. Lime	2200'-2260'			
Injun	2260'-2485'	gas ck @ 2371 = 78 mcfs		
Sd/Sh	2485'-3110'	gas ck @ 2495 = 45 mcfs		
4 th Sand	3110'-3130'			
Sd/Sh	3130'-3522'	gas ck @ Td = 54 mcfs		
TD	3522'			