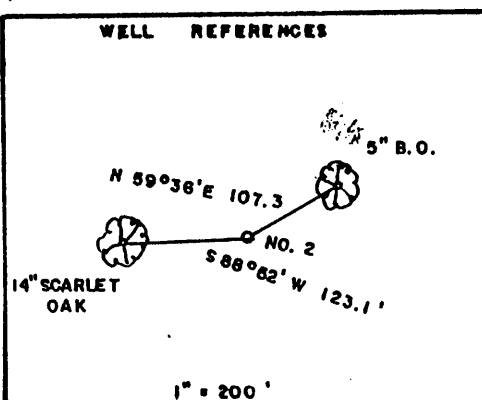
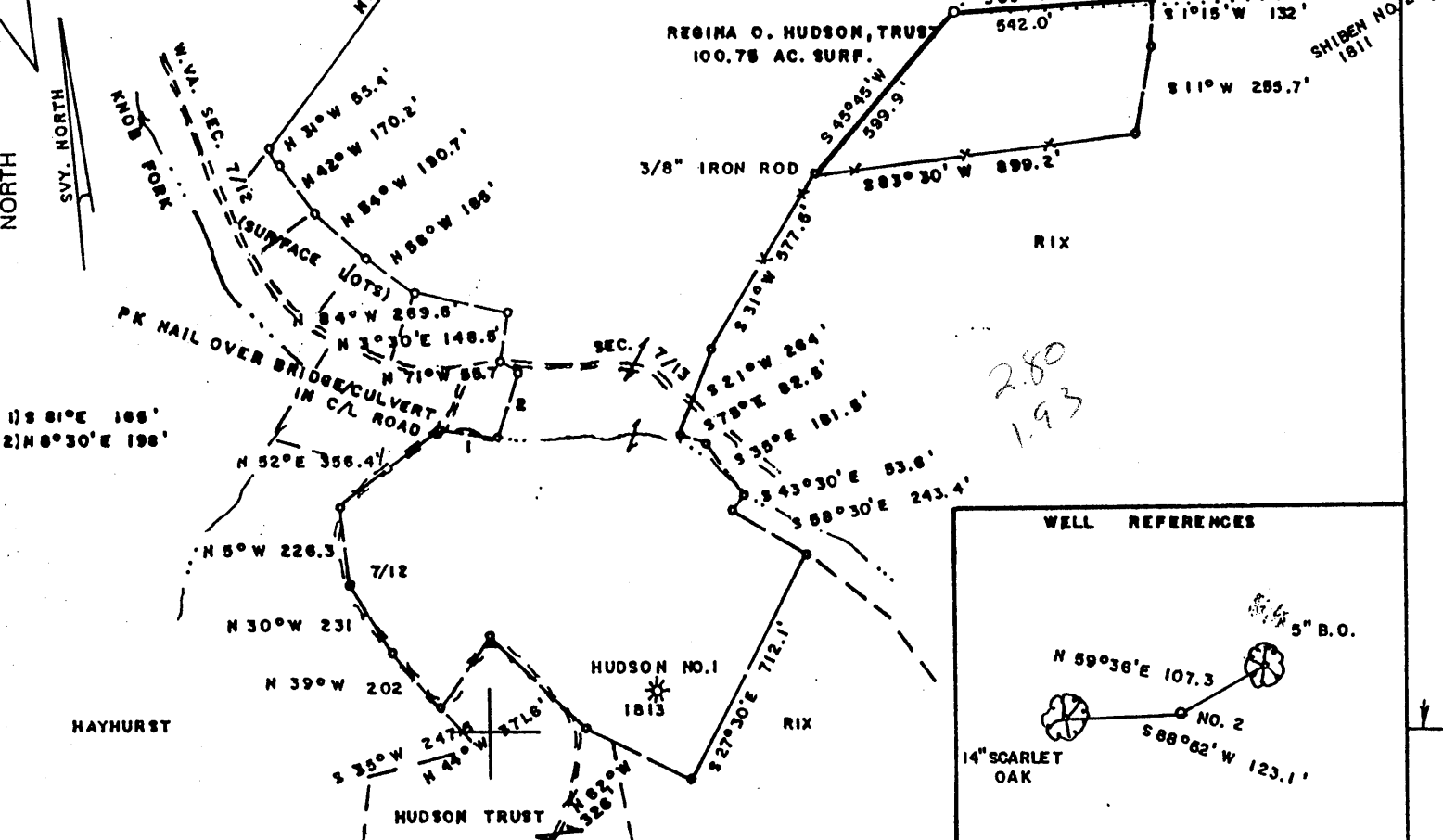
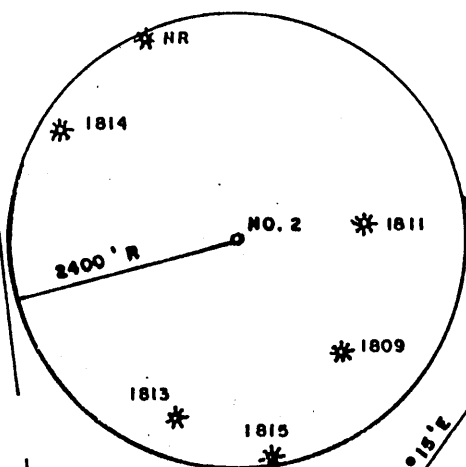


HUDSON LEASE 100.75 AC.

10,200' W
LATITUDE 39° 40' 00"



FILE NO. _____
DRAWING NO. _____
SCALE 1" = 500'
MINIMUM DEGREE OF ACCURACY 1/200
PROVEN SOURCE OF ELEVATION BM SOUTH SIDE OF LEASE ELEV. = 1322'

I THE UNDERSIGNED, HEREBY CERTIFY THAT THIS PLAT IS CORRECT TO THE BEST OF MY KNOWLEDGE AND BELIEF AND SHOWS ALL THE INFORMATION REQUIRED BY LAW AND THE REGULATIONS ISSUED AND PRESCRIBED BY THE DEPARTMENT OF ENERGY.
(SIGNED) Mark C. Echard
R.P.E. _____ L.L.S. 490



STATE OF WEST VIRGINIA
Division of Environmental Protection
OFFICE OF OIL AND GAS

DATE MAY 7 2001
OPERATOR'S WELL NO. HUDSON NO. 2
API WELL NO. 47 103 01841

WELL TYPE: OIL GAS LIQUID INJECTION WASTE DISPOSAL
(IF "GAS,") PRODUCTION STORAGE DEEP SHALLOW

LOCATION: ELEVATION 1400' WATERSHED KNOB FORK
DISTRICT CENTER COUNTY WETZEL
QUADRANGLE LITTLETON 7.5'

SURFACE OWNER REGINA O. HUDSON, TRUST ACREAGE 100.75
OIL & GAS ROYALTY OWNER REGINA O. HUDSON, TRUST LEASE ACREAGE 100.75
LEASE NO. _____

PROPOSED WORK: DRILL CONVERT DRILL DEEPER REDRILL FRACTURE OR STIMULATE PLUG OFF OLD FORMATION PERFORATE NEW FORMATION OTHER PHYSICAL CHANGE IN WELL (SPECIFY) _____

PLUG AND ABANDON CLEAN OUT AND REPLUG

TARGET FORMATION SPEECHLEY ESTIMATED DEPTH 3900'
WELL OPERATOR D.A.C. DESIGNATED AGENT KENNETH MASON
ADDRESS P.O. BOX 99 ALMA WV 26320 ADDRESS P.O. BOX 99 ALMA, WV 26320

WETZEL COUNTY NAME PERMIT 1841

JUN 08 2001

6-6 45

State of West Virginia
Division of Environmental Protection
Section of Oil and Gas

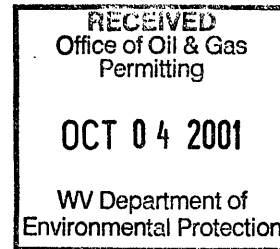
Reviewed ASB

Well Operators Report of Well Work

Farm name: Hudson Operator Well #: Hudson #2
Location: Elevation: 1,400. Quadrangle: Littleton 7.5'
District: Center County Wetzel
Latitude 14,800 feet south of 39 Deg. 40 Min. 00 Sec.
Longitude 10,200 feet west of 80 Deg. 30 Min. 00 Sec.

Company: Drilling Appalachian Corporation
P.O. Box 99
Alma WV 26320

Agent:	Kenneth Mason	Casing	Used in Drilling	Left in Well	Cement Fill up
Inspector:	Randall Mick				
Permit Issued:	06-05-01	9 5/8	225	218	70 sks
Well Work Commenced:	08-14-01				
Well Work Completed:	08-21-01	6 5/8	1750	1727	100 sks
Verbal Plugging					
Permission granted on:		4 1/2	3670	3619	145 sks
Rotary	Cable	Rig			
Total Depth (ft)	3670'				
Fresh water depth (ft)	972'				
Salt water depth (ft)	N/A				
Is coal being mined in are (Y/N)	N				
Coal depths (ft)	N/A				



OPEN FLOW DATA

Producing formation	Bayard	Pay zone depths (ft)	3250-3482
Gas: Initial open flow	show mcf/d	Oil: Initial open flow	bbls/day
Final open flow	show mcf/d	Final open flow	bbls/day
Time of open flow between initial and final tests			48 Hours
Static rock pressure	450# psig (surface pressure) after		48 Hours
Other producing formation	Big Injun	Pay zone depths (ft)	2470-2520
Gas: Initial open flow	mcf/day	Oil: Initial open flow	bbls/day
Final open flow	mcf/day	Final open flow	bbls/day
Time of open flow between initial and final tests			48 Hours
Static rock pressure	psig (surface pressure) after		48 Hours

For: Drilling Appalachian Corporation
By: Kenneth Mason
Date: 09-15-01

OCT 19 2001

WET 1841

Hudson #2
08-28-01

Stage #1	perfs	sand	avg rate	isip
5 th , 4 th Bayard	3212-3460	250 sks	20 bpm	3319#
Stage #2 Big Injun	2450-2500	200 sks	20 bpm	2403#

Drillers Log

Sh	0	258
Sd	258	580
RR	510	520
Sd/Sh	580	2091
Sd	2091	2186
Sd/Sh	2186	2227
RR	2227	2371
Lime	2371	2430
Sd	2430	2635
Sd/Sh	2635	3190
Sd	3190	3228
Sh	3228	3290
Sd	3290	3314
Sd/Sh	3314	3670
Td	3670	

Electric Log Tops

Big Lime	2380
Berea	2730
Gordon	3212

