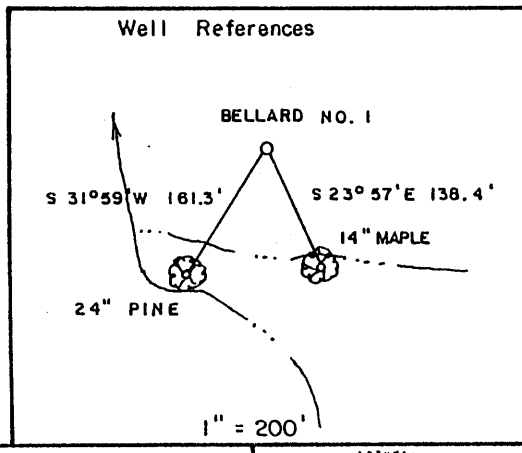
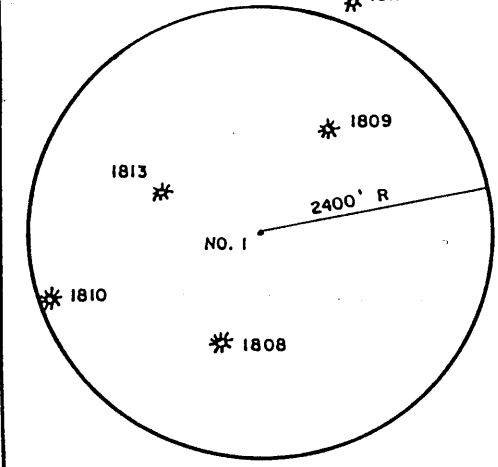
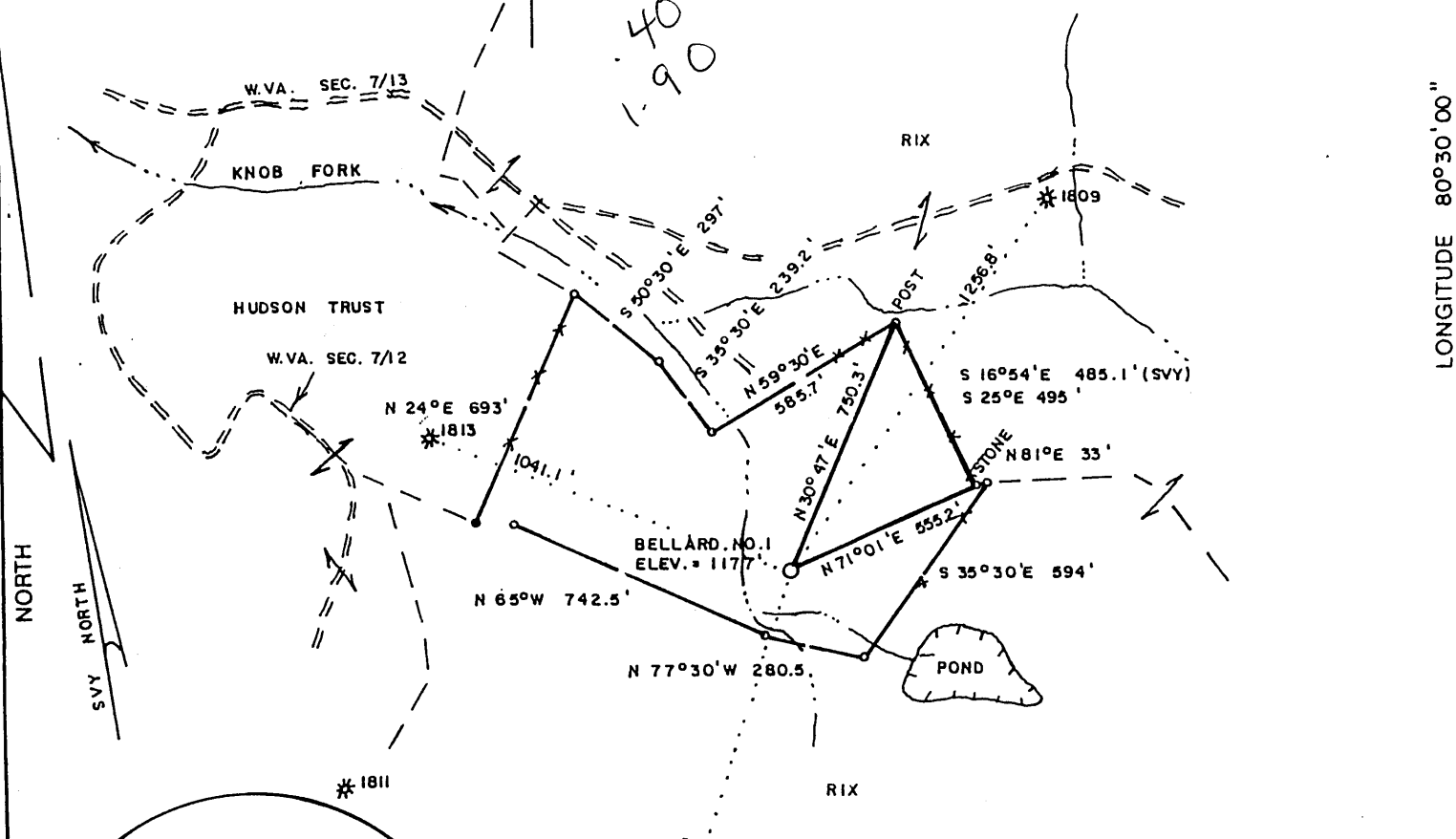


BELLARD LEASE 18.5 AC. of 71.5 AC.

ROBERT E. and LINDA E. RIX 18.5 AC. SURF.

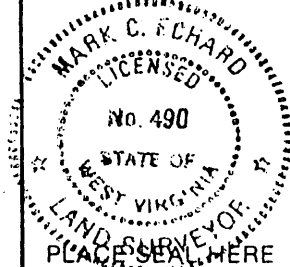


(+) DENOTES LOCATION OF WELL ON UNITED STATES TOPOGRAPHIC MAPS

FILE NO. _____
 DRAWING NO. _____
 SCALE 1" = 500'
 MINIMUM DEGREE OF ACCURACY 1/200
 PROVEN SOURCE OF ELEVATION JCT. OF ROADS
 SW OF LOC. ELEV. = 1550'

I THE UNDERSIGNED, HEREBY CERTIFY THAT THIS PLAT IS CORRECT TO THE BEST OF MY KNOWLEDGE AND BELIEF AND SHOWS ALL THE INFORMATION REQUIRED BY LAW AND THE REGULATIONS ISSUED AND PRESCRIBED BY THE DEPARTMENT OF ENERGY.

(SIGNED) Mark C. Echard
 R.P.E. _____ L.L.S. NO. 490



STATE OF WEST VIRGINIA
 Division of Environmental Protection
 OFFICE OF OIL AND GAS



DATE NOVEMBER 29, 2000
 OPERATOR'S WELL NO. BELLARD NO. 1
 API WELL NO.

WELL TYPE: OIL ___ GAS LIQUID INJECTION ___ WASTE DISPOSAL ___
 (IF "GAS,") PRODUCTION STORAGE ___ DEEP ___ SHALLOW
 LOCATION: ELEVATION 1177' WATERSHED KNOB FORK
 DISTRICT _____ CENTER _____ COUNTY WETZEL

47 - 103 - 01815
 STATE COUNTY PERMIT

QUADRANGLE BIG RUN 7.5'
 SURFACE OWNER ROBERT E. and LINDA E. RIX ACREAGE 18.5
 OIL & GAS ROYALTY OWNER DOYLE P. BELLARD, et al LEASE ACREAGE 71.5

PROPOSED WORK: DRILL CONVERT DRILL DEEPER ___ REDRILL ___ FRACTURE OR STIMULATE PLUG OFF OLD FORMATION ___ PERFORATE NEW FORMATION ___ OTHER PHYSICAL CHANGE IN WELL (SPECIFY) _____

PLUG AND ABANDON ___ CLEAN OUT AND REPLUG ___
 TARGET FORMATION SPEECHLEY ESTIMATED DEPTH 3600'
 WELL OPERATOR D.A.C. DESIGNATED AGENT KENNETH MASON
 ADDRESS P.O. BOX 99 ADDRESS P.O. BOX 99
ALMA, WV 26320 ALMA, WV 26320

FORM WW-6

COUNTY NAME PERMIT

6-645

DEC 8 2000

State of West Virginia
Division of Environmental Protection
Section of Oil and Gas

Approved AKB

Well Operators Report of Well Work

Farm name: Rix Operator Well #: Bellard #1

Location: Elevation: 1,177. Quadrange: Big Run

District: Center County Wetzel
Latitude 2,070 feet south of 39 Deg. 37 Min. 30 Sec.
Longitude 10,444 feet west of 80 Deg. 30 Min. 00 Sec.

Company: Drilling Appalachian Corporation
P.O. Box 99
Alma WV 26320

Agent: Kenneth Mason Casing Used in Left in Cement
Drilling Well Fill up

Inspector: Randall Mick
Permit Issued: 12-04-00 9 5/8 222 209 70sks
Well Work Commenced: 01-02-01
Well Work Completed: 01-07-01 6 5/8 1550 1526 150 sks
Verbal Plugging
Permission granted on: 4 1/2 2408 2370 125 sks
Rotary Cable Rig
Total Depth (ft) 2408'
Fresh water depth (ft) 1804'
Salt water depth (ft) N/A
Is coal being mined in are (Y/N) N
Coal depths (ft) 1316'

RECEIVED
Office of Oil & Gas
Permitting
MAR 29 2001
WV Division of
Environmental Protection

OPEN FLOW DATA

Producing formation	Big Injun	Pay zone depths (ft)	2208-2212
Gas: Initial open flow	show mcf/d	Oil: Initial open flow	bbls/day
Final open flow	show mcf/d	Final open flow	bbls/day
Time of open flow between initial and final tests			48 Hours
Static rock pressure	450# psig (surface pressure)	after	48 Hours
Other producing formation		Pay zone depths (ft)	
Gas: Initial open flow	mcf/day	Oil: Initial open flow	bbls/day
Final open flow	mcf/day	Final open flow	bbls/day
Time of open flow between initial and final tests			48 Hours
Static rock pressure	psig (surface pressure)	after	48 Hours

For: Drilling Appalachian Corporation

By: Kenneth Mason
Date: 02-15-01

MAY 4 2001

WET 1815

Bellard #1
01-11-01

Stage #1	perfs	sand	avg rate	isip
Big Injun	2212-2222	100 sks	36 bpm	2950#

Drillers Log

Fill	0	12
Sd/Sh	12	260
RR	260	268
Sd/Sh	268	848
Coal	848	857
Sd/Sh	857	1111
RR	1111	1196
Sd/Sh	1196	1316
Coal	1316	1326
Sd/Sh	1326	2045
RR	2045	2111
Sd/Sh	2111	2149
Lime	2149	2200
Sd	2200	2408
Td	2408	

1804 2" strm

gas ch @ 2216 show
gas ck @ 2225 strong show

Electric Log Tops

Big Lime 2150

