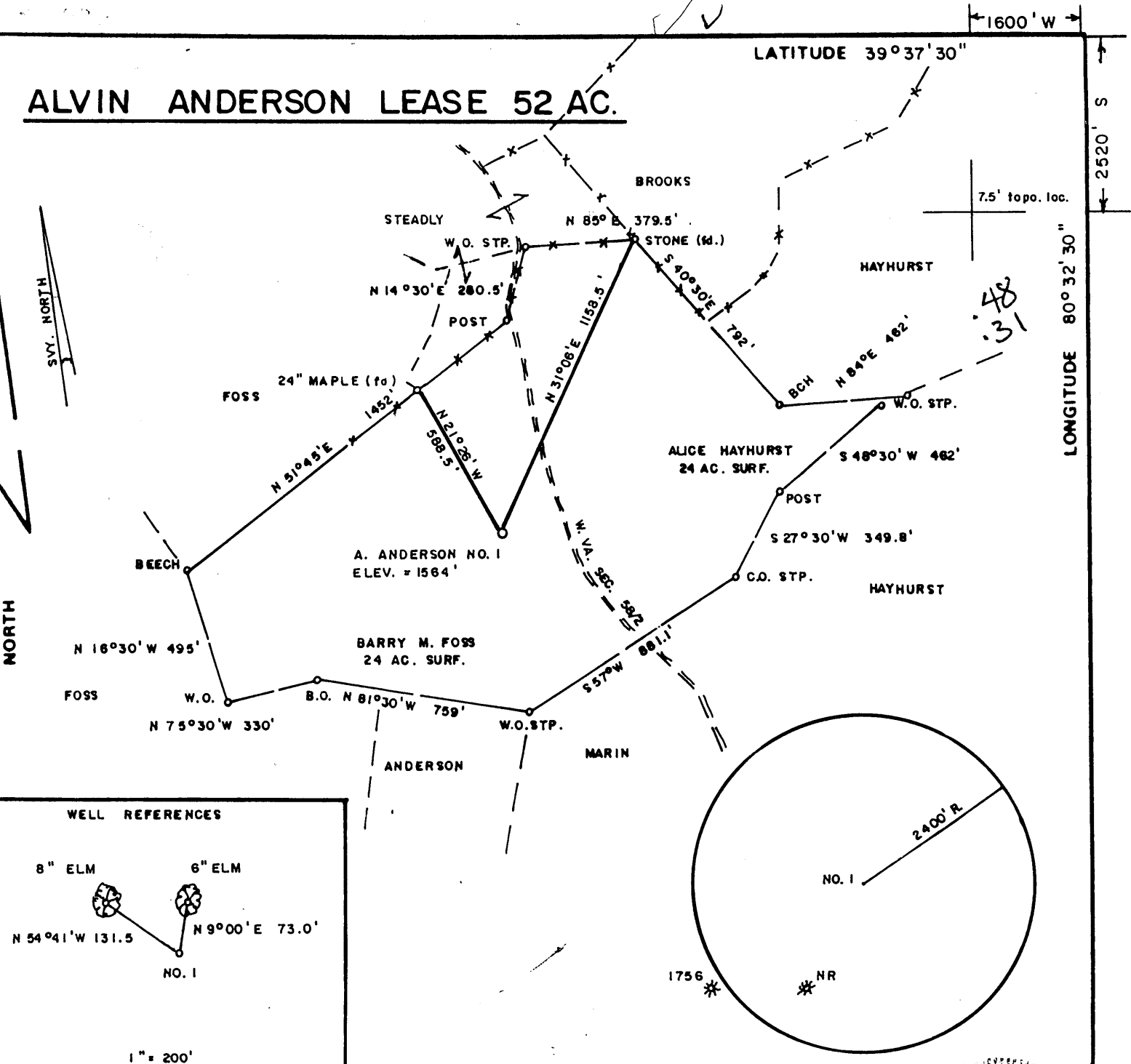
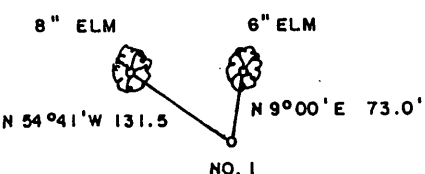


ALVIN ANDERSON LEASE 52 AC.



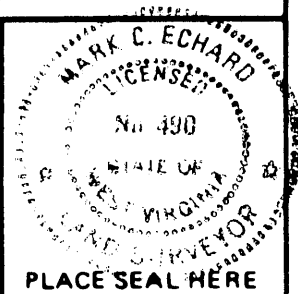
WELL REFERENCES



FILE NO. _____
 DRAWING NO. _____
 SCALE 1" = 500'
 MINIMUM DEGREE OF ACCURACY 1/200
 PROVEN SOURCE OF ELEVATION JCT. OF ROADS
 SE OF LEASE ELEV. = 1550'

I THE UNDERSIGNED, HEREBY CERTIFY THAT THIS PLAT IS CORRECT TO THE BEST OF MY KNOWLEDGE AND BELIEF AND SHOWS ALL THE INFORMATION REQUIRED BY LAW AND THE REGULATIONS ISSUED AND PRESCRIBED BY THE DEPARTMENT OF MINES.

Mark C. Echard
 (SIGNED) MARK C. ECHARD
 R.P.E. _____ L.L.S. 490



(+) DENOTES LOCATION OF WELL ON UNITED STATES TOPOGRAPHIC MAPS
 FORM IV-6 (8-78)



DATE MAY 1 2000
 OPERATOR'S WELL NO. ANDERSON NO. 1
 API WELL NO. _____
47 - 103 - 01804
 STATE COUNTY PERMIT

STATE OF WEST VIRGINIA DEPARTMENT OF MINES OIL AND GAS DIVISION

WELL TYPE: OIL GAS LIQUID INJECTION WASTE DISPOSAL
 (IF "GAS,") PRODUCTION STORAGE DEEP SHALLOW
 LOCATION: ELEVATION 1564' WATER SHED BIG RUN
 DISTRICT CENTER COUNTY WETZEL
 QUADRANGLE BIG RUN 7.5'
 SURFACE OWNER BARRY M. FOSS ACREAGE 24
 OIL & GAS ROYALTY OWNER LAURA B. ANDERSON, et al LEASE ACREAGE 52
 LEASE NO. _____
 PROPOSED WORK: DRILL CONVERT DRILL DEEPER REDRILL FRACTURE OR STIMULATE PLUG OFF OLD FORMATION PERFORATE NEW FORMATION OTHER PHYSICAL CHANGE IN WELL (SPECIFY) _____
 PLUG AND ABANDON CLEAN OUT AND REPLUG
 TARGET FORMATION SPEECHLEY ESTIMATED DEPTH 3900'
 WELL OPERATOR D.A.C. DESIGNATED AGENT KENNETH MASON
 ADDRESS P.O. BOX 99 ALMA, WV 26320-0099 ADDRESS P.O. BOX 99 ALMA, WV 26320-0099

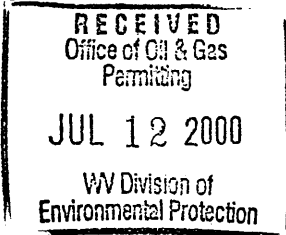
66 48

MAY 1 2000

WET 1804

WR-35

API# -47-103-01804



State of West Virginia
Division of Environmental Protection
Section of Oil and Gas

Reviewed _____

Well Operator's Report of Well Work

Farm Name: Ross
Location: Elevation: 1564'
District: Grant
Latitude: 2520 Feet South of
Longitude: 1800 Feet West of

Operators Well No.: Anderson #1
Quadrangle: Big Run 7.5'
County: Wetzel
39 Deg. 37 min. 30sec.
80 Deg. 30 min. 00sec.

Company: D.A.C.
P. O. 99
Alma WV 26320

| casing tubing | used in drilling | left in well | cement fill up sks |
|---------------|------------------|--------------|--------------------|
|---------------|------------------|--------------|--------------------|

Agent: Kenneth Mason

| | | | |
|--------|-----|-----|--------|
| 09 5/8 | 250 | 215 | 88 sks |
|--------|-----|-----|--------|

Inspector: Randall Mick

| | | | |
|-------|------|------|---------|
| 6 5/8 | 2350 | 2304 | 150 sks |
|-------|------|------|---------|

Permit Issued: 05/16/00

Well Work Commenced: 06/18/00

Well Work Completed: 06/22/00

| | | | |
|-------|------|------|---------|
| 4 1/2 | 3767 | 3619 | 141 sks |
|-------|------|------|---------|

Rotary X Cable _____ Rig

Total Depth (feet) 3767'

Fresh Water Depths (ft) 2048'

Salt Water Depths (ft) N/A

Is coal being mined in area (Y/N) N

Coal Depths (ft): 1320'

OPEN FLOW DATA

Producing formation 4th

Pay zone depth (ft) 3376-3410

Gas: Initial open flow tstm MCF/D

Oil: Initial open flow 0 BBL/D

Final open flow 85 MCF/D

Final open Flow show BBL/D

Static Rock Pressure _____

psig (surface pressure) after 48 Hours

Second producing formation Bayard

Pay zone depth (ft) 3452-3464

Gas: Initial open flow * MCF/D

Oil: Initial open flow 0 BBL/D

Final open flow * MCF/D

Final open flow 0 BBL/D

static rock pressure *

psig (surface pressure) after * Hours

* = commingled zones

For: D.A.C.

By: [Signature]

Date: 06-30-00

AUG 04 2000

WET 1804

| Stage | Formation | Perfs | Sand | N2 |
|----------|-------------|-----------------------|---------|-------------|
| 06-26-99 | Anderson #1 | | | |
| 1 | 4th, Bayard | 3376-3464 18 holes | 300 sks | 320,000 scf |

ISIP = 2884#
5 min = 2620#

Drillers Log

| Formation | Top | Bottom | |
|-----------|------|--------|--------------------|
| Fill | 0 | 10 | |
| Sd/Sh | 10 | 400 | |
| Sd | 400 | 455 | |
| Sd/Sh | 455 | 675 | damp @ 80' |
| Sd | 675 | 705 | |
| Sd/Sh | 705 | 1320 | |
| Coal | 1320 | 1326 | hole damp 2048 |
| Sd/Sh | 1326 | 1389 | |
| RR | 1389 | 1449 | |
| Sd/Sh | 1449 | 1645 | |
| Sd | 1645 | 1670 | |
| Sd/Sh | 1670 | 2392 | |
| RR | 2392 | 2416 | |
| Sd/Sh | 2416 | 2535 | |
| BL | 2535 | 2622 | |
| Sd | 2622 | 2765 | |
| Sh | 2765 | 3360 | |
| Sd | 3360 | 3366 | |
| Sh | 3366 | 3450 | gas ck @ Td = odor |
| Sd | 3450 | 3475 | |
| Sh | 3475 | 3767 | |
| Td | 3767 | | |

Electric Log Tops

| Formation | Depth top |
|-----------|-----------|
| Big Lime | 2530 |
| Big Injun | 2603 |
| Berea | 2925 |
| Gordon | 3282 |
| 4th | 3354 |