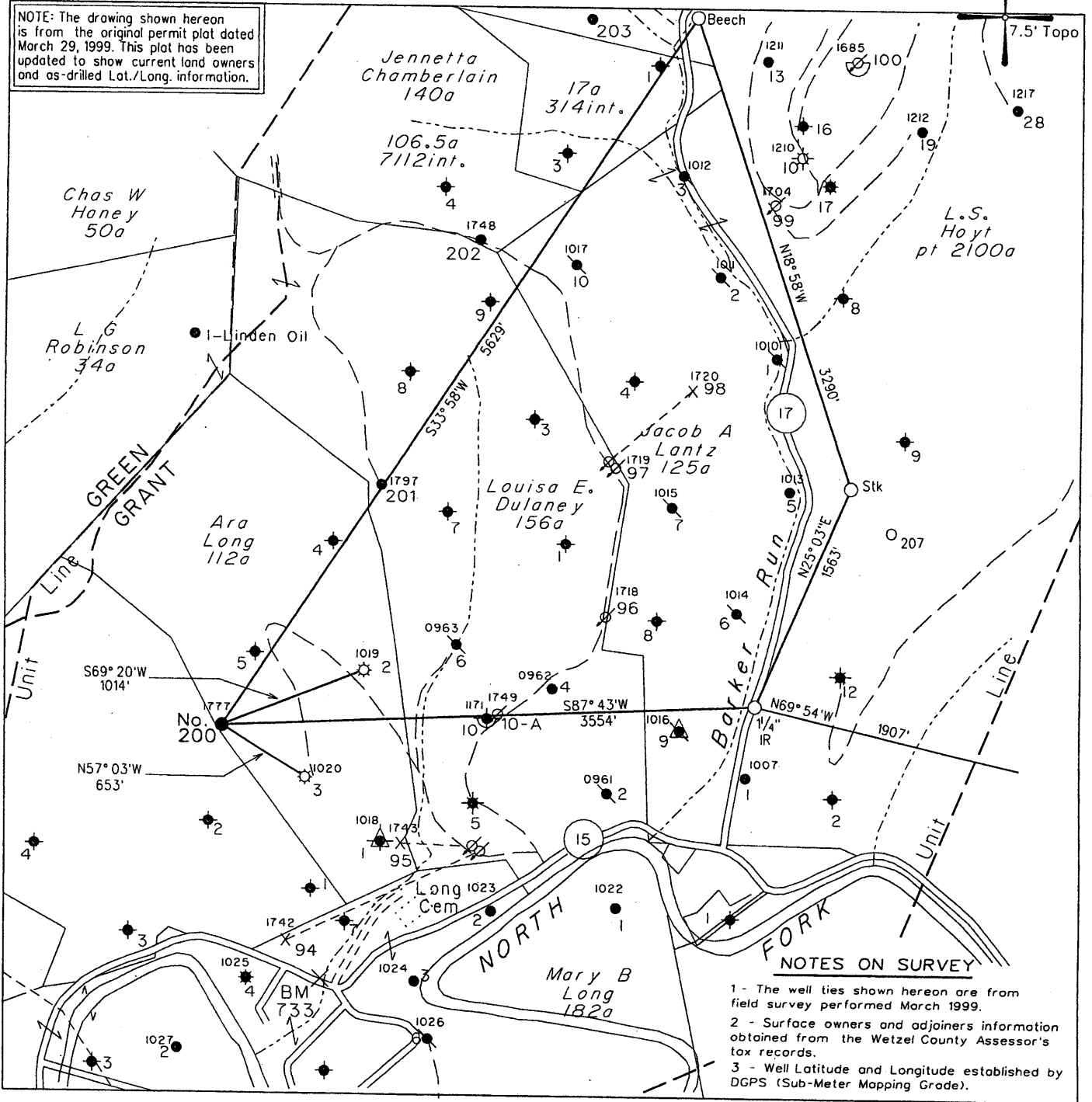


NOTE: The drawing shown hereon is from the original permit plat dated March 29, 1999. This plat has been updated to show current land owners and as-drilled Lat./Long. information.



- NOTES ON SURVEY**
- 1 - The well ties shown hereon are from field survey performed March 1999.
 - 2 - Surface owners and adjoining information obtained from the Wetzel County Assessor's tax records.
 - 3 - Well Latitude and Longitude established by DGPS (Sub-Meter Mapping Grade).

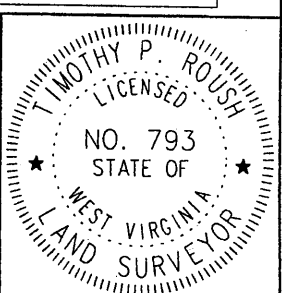
(H) DENOTES LOCATION OF WELL ON UNITED STATES TOPOGRAPHIC MAPS

• Denotes a Water Supply Source

FILE NO. 1039-21
 MAP NO. N S E W
 SCALE 1" = 1000'
 MINIMUM DEGREE OF ACCURACY 1 in 200
 PROVEN SOURCE OF ELEVATION

I THE UNDERSIGNED, HEREBY CERTIFY THAT THIS PLAT IS CORRECT TO THE BEST OF MY KNOWLEDGE AND BELIEF AND SHOWS ALL THE INFORMATION REQUIRED BY LAW AND THE REGULATIONS ISSUED AND PRESCRIBED BY THE DEPARTMENT OF MINES.

(SIGNED) *Timothy P. Roush*
 TIMOTHY P. ROUSH PS 793



WEST VIRGINIA
 Division of Environmental Protection
 Office of Oil and Gas
 601 57th Street
 Charleston, West Virginia 25304



DATE January 3, 2008
 FARM Ara Long NO. 200
 API WELL NO. 47-103-1777-S

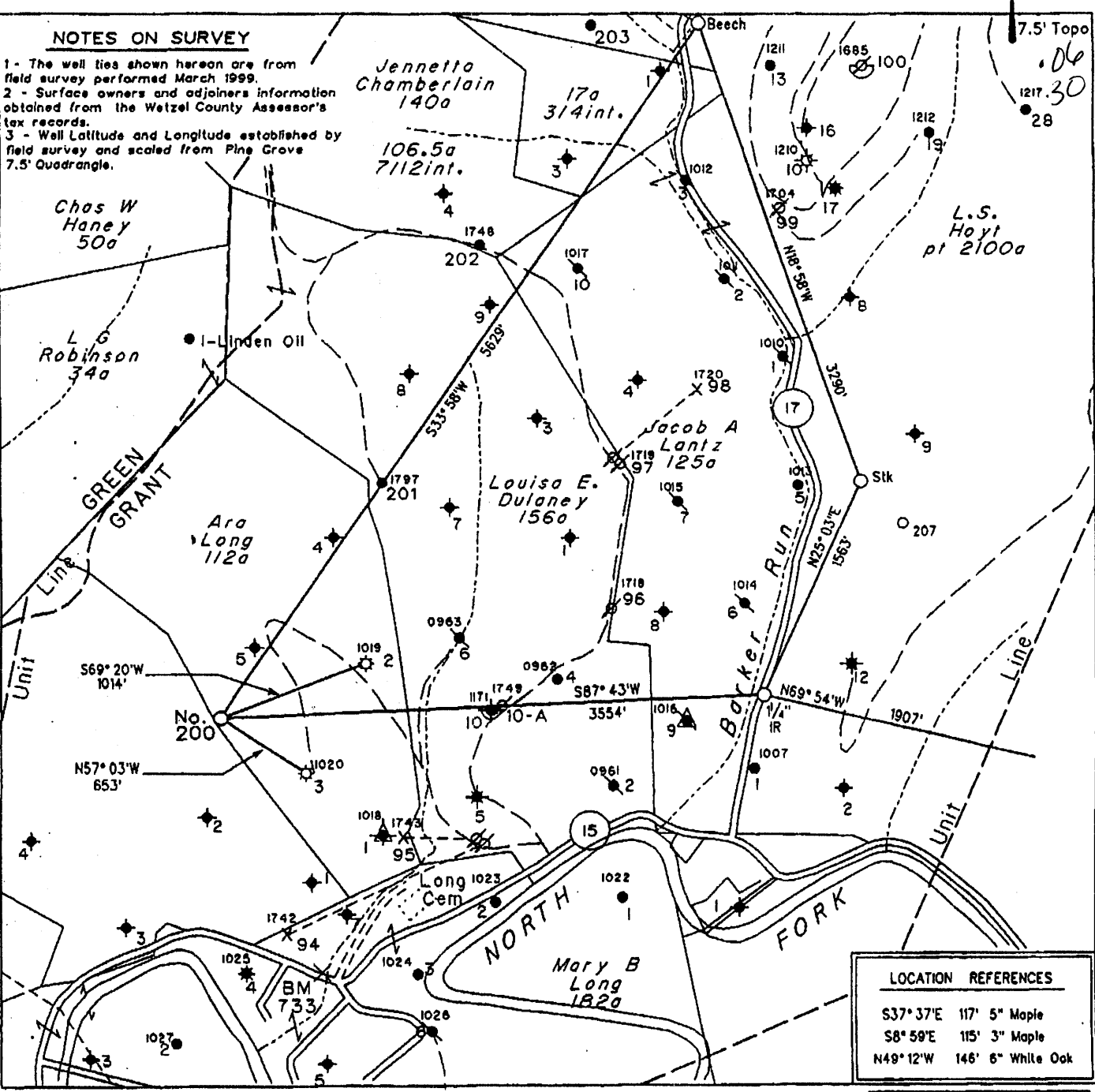
WELL TYPE: OIL ___ GAS ___ LIQUID INJECTION X WASTE DISPOSAL ___
 (IF "GAS") PRODUCTION ___ STORAGE ___ DEEP ___ SHALLOW ___
 LOCATION: ELEVATION 1339' WATERSHED North Fork of Fishing Creek
 DISTRICT Grant COUNTY Wetzel
 QUADRANGLE Pine Grove 7.5'
 SURFACE OWNER Paul Able ACREAGE 100.3 Ac.
 OIL & GAS ROYALTY OWNER Robert B. Myers et al. LEASE ACREAGE 112 Ac.
 LEASE NO. 25941-50
 PROPOSED WORK: DRILL ___ CONVERT X DRILL DEEPER ___ REDRILL ___ FRACTURE OR STIMULATE X PLUG OFF OLD FORMATION ___ PERFORATE NEW FORMATION ___ OTHER PHYSICAL CHANGE IN WELL (SPECIFY) Convert to Water injection
 PLUG AND ABANDON ___ CLEAN OUT AND REPLUG ___
 TARGET FORMATION Gordon ESTIMATED DEPTH 3,350'
 WELL OPERATOR East Resources, Inc. DESIGNATED AGENT Philip S. Ondrusek
 ADDRESS P. O. Box 5519 ADDRESS P. O. Box 5519
 Vienna, W.Va. 26105 Vienna, W.Va. 26105

FEB 08 2008

WET 1777 S

NOTES ON SURVEY

- 1 - The well ties shown hereon are from field survey performed March 1999.
- 2 - Surface owners and adjoiners information obtained from the Wetzel County Assessor's tax records.
- 3 - Well Latitude and Longitude established by field survey and scaled from Pine Grove 7.5' Quadrangle.



LOCATION REFERENCES	
S37° 37'E	117' 5" Maple
S8° 59'E	115' 3" Maple
N49° 12'W	146' 6" White Oak

Note: No Known Water Supply Sources Are Located Within 1000' Of Proposed Well

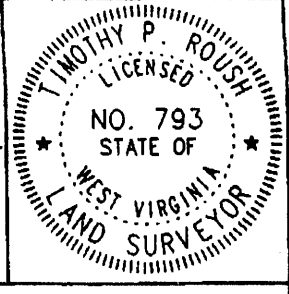
◆ Denotes a Water Supply Source

DENOTES LOCATION OF WELL ON UNITED STATES TOPOGRAPHIC MAPS

LE NO. 995
 MAP NO. N68 N 10 S E W 3
 SCALE 1" = 1000'
 MINIMUM DEGREE OF ACCURACY 1 in 200
 PROVEN SOURCE OF ELEVATION USGS BM - 838'

I THE UNDERSIGNED, HEREBY CERTIFY THAT THIS PLAT IS CORRECT TO THE BEST OF MY KNOWLEDGE AND BELIEF AND SHOWS ALL THE INFORMATION REQUIRED BY LAW AND THE REGULATIONS ISSUED AND PRESCRIBED BY THE DEPARTMENT OF MINES.

(SIGNED) [Signature]
 TIMOTHY P. ROUSH PS 793



WEST VIRGINIA
 Division of Environmental Protection
 Office of Oil and Gas
 10 McJunkin Road
 Nitro, West Virginia 25143-2506



DATE March 29, 19 99
 FARM Ara Long NO. 200
 API WELL NO. 47-103-01777

WELL TYPE: OIL GAS LIQUID INJECTION WASTE DISPOSAL
 (IF "GAS") PRODUCTION STORAGE DEEP SHALLOW
 LOCATION: ELEVATION 1339' WATERSHED North Fork of Fishing Creek
 DISTRICT Grant COUNTY Wetzel
 QUADRANGLE Pine Grove

SURFACE OWNER Paul Able ACREAGE 100.3 Ac.
 OIL & GAS ROYALTY OWNER Robert B. Myers et al. LEASE ACREAGE 112 Ac.
 LEASE NO. 25941-50

PROPOSED WORK: DRILL CONVERT DRILL DEEPER REDRILL FRACTURE OR STIMULATE PLUG OFF OLD FORMATION PERFORATE NEW FORMATION OTHER PHYSICAL CHANGE IN WELL (SPECIFY) _____

PLUG AND ABANDON CLEAN OUT AND REPLUG
 TARGET FORMATION Gordon ESTIMATED DEPTH 3,278'

WELL OPERATOR PennzEnergy E&P, L.L.C. DESIGNATED AGENT Philip S. Ondrusek
 ADDRESS P. O. Box 5519 ADDRESS P. O. Box 5519
Vienna, W.Va. 26105 Vienna, W.Va. 26105

APR 26 1999

WR-35

RECEIVED
Office of Oil & Gas

JAN 22 2010

2/6/2008

API # 47 103 01777

WV Department of
Environmental Protection

State of West Virginia
Division of Environmental Protection
Section of Oil and Gas

Well Operator's Report of Well Work

*Boh
Feb 24/10*

Farm name: ABLE, PAUL

Operator Well No.: ARA LONG 200

LOCATION: Elevation: 1339' ✓

Quadrangle: PINE GROVE

District: GRANT

County: WETZEL

Latitude: 300 Feet south of 39 Deg 35 Min 0 Sec.

Longitude: 1,600 Feet west of 80 Deg 40 Min 0 Sec.

Company: EAST RESOURCES, INC.
P.O. BOX 5519
VIENNA, WV 26105-5519

Casing Tubing Size	Used in Drilling	Left in Well	Cement Fill Up Cu. Ft.
8 5/8"	1155'	1155' ✓	500 sks
4 1/2"	3286.0'	3286.0'	275 sks

Agent: PHILIP S. ONDRUSEK

Inspector: DAVE SCRANAGE

Permit Issued: 02/06/08 ✓

Well work Commenced: 02/10/08 ✓

Well work Completed: 02/15/08 ✓

Verbal plugging

permission granted on:

Rotary Cable Rig

Total Depth (feet) 3350' ✓

Fresh water depths (ft) N/A

Salt water depths (ft) N/A

Is coal being mined in area (Y/N) N

Coal Depths (ft): 1105-1109 ✓

OPEN FLOW DATA

* WATERFLOOD INJECTOR

Producing formation Gordon Pay (ft) 3183'-3188'

Gas: Initial open flow * MCF/d Oil: Initial open flow * Bbl/d

Final open flow * MCF/d Final open flow * Bbl/d

Time of open flow between initial and final tests Hours

Static rock pressure psig (surface pressure) after Hours

Second producing formation Pay zone depth (ft)

Gas: Initial open flow MCF/d Oil: Initial open flow Bbl/d

Final open flow MCF/d Final open flow Bbl/d

Time of open flow between initial and final tests Hours

Static rock pressure psig (surface pressure) after Hours

NOTE: ON BACK OF THIS FORM, PUT THE FOLLOWING: 1) DETAILS OF PERFORATED INTERVALS, FRACTURING OR STIMULATING, PHYSICAL CHANGE, ETC. 2) THE WELL LOG WHICH IS A SYSTEMATIC DETAILED GEOLOGICAL RECORD OF ALL FORMATIONS, INCLUDING COAL ENCOUNTERED BY THE WELLBORE.

For: EAST RESOURCES, INC

By:

Date:

[Signature]
2/24/10

02/26/2010

Treatment : No additional treatment

Well Log : SEE ORIGINAL WELL RECORD

State of West Virginia
Division of Environmental Protection
Section of Oil and Gas

Handwritten initials

Well Operator's Report of Well Work

Farm name: ABLE, PAUL Operator Well No.: ARA LONG 200
LOCATION: Elevation: 1339' Quadrangle: Pine Grove
District: Grant County: Wetzel
Latitude: 300 Feet south of 39 Deg 35 Min 0 Sec.
Longitude: 1,600 Feet west of 80 Deg 40 Min 00 Sec.

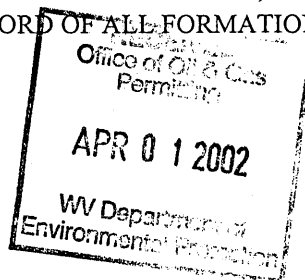
Company: EAST RESOURCES, INC.
P.O. BOX 5519
VIENNA, WV 26105-5519
Agent: MICHAEL MCCOWN
Inspector: Randy Mick
Permit Issued: 04/23/99
Well work Commenced: 06/18/99
Well work Completed: 09/09/99
Verbal plugging permission granted on:
Rotary X Cable Rig
Total Depth (feet) 3,350
Fresh water depths (ft) NA
Salt water depths (ft) NA
Is coal being mined in area (Y/N) N
Coal Depths (ft): 1105-1109

Table with 4 columns: Casing & Tubing Size, Used in Drilling, Left in Well, Cement Fill Up Cu. Ft.
Rows: 8 5/8" (1155', 1155', 500 sks), 4 1/2" (3286.00', 3286.00', 275 sks)

OPEN FLOW DATA * waterflood producer

Producing formation Gordon Pay zone depth (ft) 3183-3188
Gas: Initial open flow * MCF/d Oil: Initial open flow * Bbl/d
Final open flow * MCF/d Final open flow * Bbl/d
Time of open flow between initial and final tests Hours
Static rock pressure * psig (surface pressure) after * Hours
Second producing formation Pay zone depth (ft)
Gas: Initial open flow MCF/d Oil: Initial open flow Bbl/d
Final open flow MCF/d Final open flow Bbl/d
Time of open flow between initial and final tests Hours
Static rock pressure psig (surface pressure) after Hours

NOTE: ON BACK OF THIS FORM, PUT THE FOLLOWING: 1) DETAILS OF PERFORATED INTERVALS, FRACTURING OR STIMULATING, PHYSICAL CHANGE, ETC. 2) THE WELL LOG WHICH IS A SYSTEMATIC DETAILED GEOLOGICAL RECORD OF ALL FORMATIONS, INCLUDING COAL ENCOUNTERED BY THE WELLBORE.



For: EAST RESOURCES, INC.
By: [Signature]
Date: 3/22/02

APR 5 2002

WET 1777

Treatment :

Treated Gordon Perfs 3183-3188 w/500 gals 15% HCl, 236 bbls gelled water and 11000 # 20/40 sand

Well Log :

Sand and Shale	0	264
Sand and Shale	264	295
Shale	295	854
Sand	854	996
Shale	996	1015
Sand	1015	1028
shale	1028	1040
Sand	1040	1100
Shale	1100	1105
Coal	1105	1109
Shale	1109	1471
Sand	1471	1489
Shale	1489	1578
Sand	1578	1622
Shale	1622	1694
Sand	1694	1730
Shale	1730	1900
Sand	1900	2024
Shale	2024	2233
Little Lime	2233	2295
Big Lime	2295	2376
Big Injun	2376	2580
Shale	2580	3149
Gordon Stray	3149	3170
Shale	3170	3181
Gordon	3181	3192
Shale	3192	3350
TD	3350	