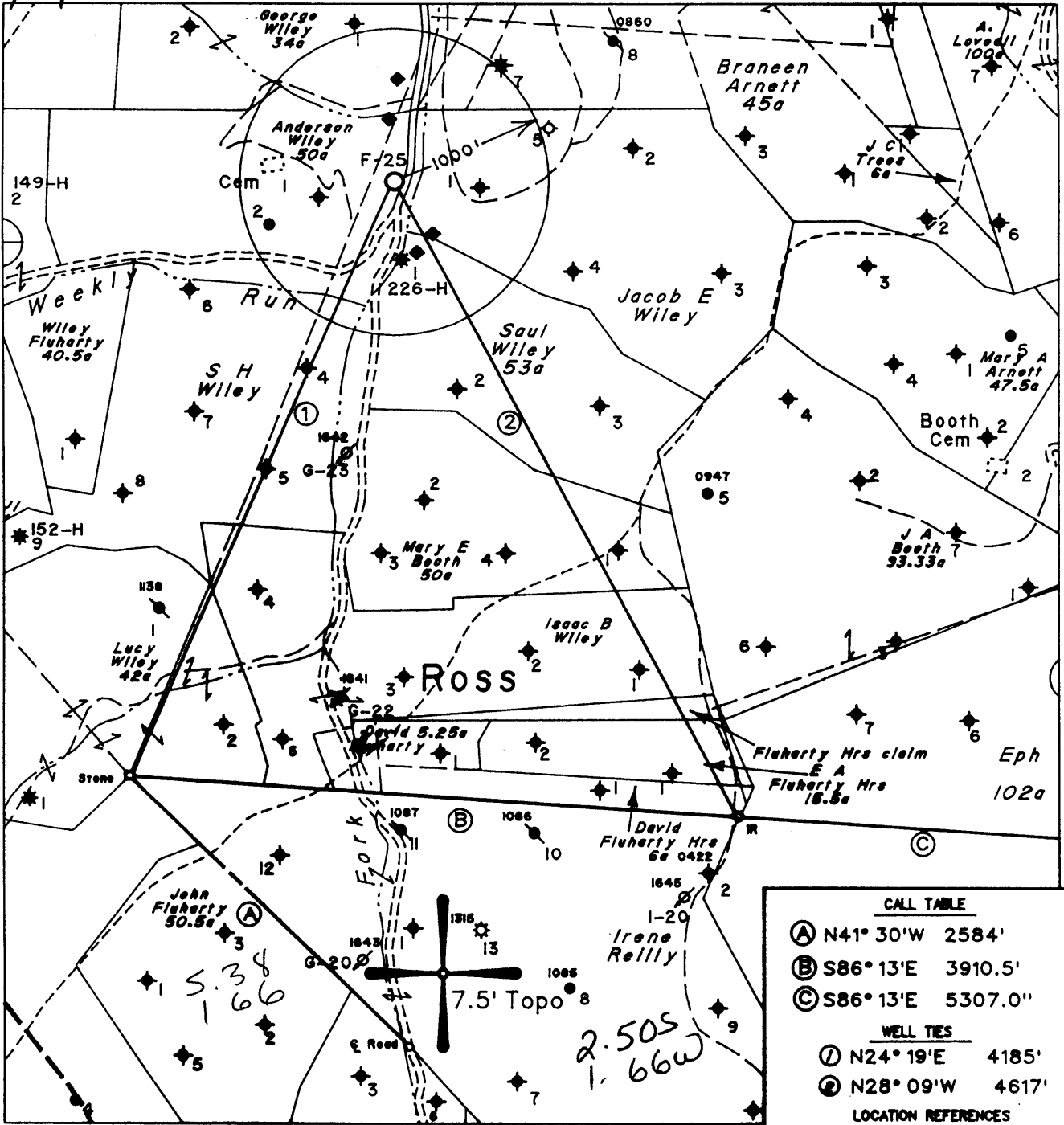


GS 3/14/95



Note: All Known Water Supply Sources Located Within 1000' Of Proposed Well Are Shown

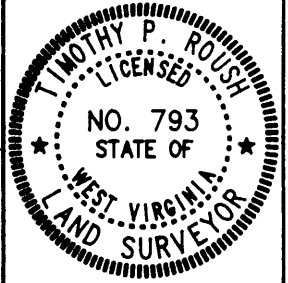
◆ Denotes a Water Supply Source

(H) DENOTES LOCATION OF WELL ON UNITED STATES TOPOGRAPHIC MAPS

FILE NO. 1803
 MAP NO. N57 N 5 S E W 5
 SCALE 1" = 1000'
 MINIMUM DEGREE OF ACCURACY 1 in 200
 PROVEN SOURCE OF ELEVATION USGS BM - 902

I THE UNDERSIGNED, HEREBY CERTIFY THAT THIS PLAT IS CORRECT TO THE BEST OF MY KNOWLEDGE AND BELIEF AND SHOWS ALL THE INFORMATION REQUIRED BY LAW AND THE REGULATIONS ISSUED AND PRESCRIBED BY THE DEPARTMENT OF MINES.

(SIGNED) *Timothy P. Roush*
 TIMOTHY P. ROUSH PS 793



STATE OF WEST VIRGINIA
 DIVISION OF ENERGY
 OIL AND GAS SECTION



DATE March 1, 19 95
 FARM Anderson Wiley NO. F-25
 API WELL NO. 47-103-1659-5

WELL TYPE: OIL GAS LIQUID INJECTION WASTE DISPOSAL
 (IF "GAS") PRODUCTION STORAGE DEEP SHALLOW
 LOCATION: ELEVATION 814' WATERSHED Fluharty Fork
 DISTRICT Green COUNTY Wetzel
 QUADRANGLE Pine Grove Section SW

SURFACE OWNER Carl E. Fluharty Sr. ACREAGE 49.59 Ac.
 OIL & GAS ROYALTY OWNER Pennzoil Products Co. et.al. LEASE ACREAGE 50 Ac.
 LEASE NO. FEE - 3318-00

PROPOSED WORK: DRILL CONVERT DRILL DEEPER REDRILL FRACTURE OR STIMULATE PLUG OFF OLD FORMATION PERFORATE NEW FORMATION OTHER PHYSICAL CHANGE IN WELL (SPECIFY) _____

PLUG AND ABANDON CLEAN OUT AND REPLUG
 TARGET FORMATION Gordon ESTIMATED DEPTH 2810'

WELL OPERATOR Pennzoil Products Company DESIGNATED AGENT James A. Crews
 ADDRESS P. O. Box 5519 ADDRESS P. O. Box 5519
Vienna, W.Va. 26105 Vienna, W.Va. 26105

8-0 95

1538 is another well on the hundred quad
Kla 11/9/98

WR-35

11-Apr-95
API # 47 -103- 1659

State of West Virginia
Division of Environmental Protection
Section of Oil and Gas

RECEIVED
Office of Oil & Gas
Office of Chief
MAR 16 1998
WV Division of
Environmental Protection

Well Operator's Report of Well Work

Farm name: Fluharty, Carl & Betty Operator Well No.: A. Wiley #F-25

LOCATION: Elevation: 814.00 Quadrangle: Pine Grove
District: Green County: Wetzel
Latitude: 13,100 Feet south of 39 Deg 32 Min 30 Sec.
Longitude: 8,750 Feet west of 80 Deg 40 Min 0 Sec.

Company: PENNZOIL PRODUCTS COMPANY
P.O. BOX 5519
VIENNA, WV 26105-5519

Agent: PHILIP S. ONDRUSEK

Inspector: Randal Mick
Permit Issued: 4/11/95
Well work Commenced: 6/14/96
Well work Completed: 9/12/96
Verbal plugging permission granted on:
Rotary Cable Rig
Total Depth (feet) 2807'
Fresh water depths (ft) NA
Salt water depths (ft) NA

Casing & Tubing Size	Used in Drilling	Left in Well	Cement Fill Up Cu. Ft.
11'	30'	30'	
8-5/8"	219'	219'	175 Sacks
4 1/2"	2744.15'	2744.15'	275 Sacks

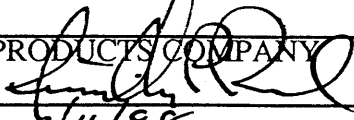
Is coal being mined in area (Y/N) N
Coal Depths (ft): 562-568

OPEN FLOW DATA *Well was drilled as a waterflood injection well. No open-flow data was obtained

Producing formation Gordon Pay zone depth (ft) 2651-2670
Gas: Initial open flow * MCF/d Oil: Initial open flow * Bbl/d
Final open flow * MCF/d Final open flow * Bbl/d
Time of open flow between initial and final tests * Hours
Static rock pressure * psig (surface pressure) after Hours

Second producing formation Pay zone depth (ft)
Gas: Initial open flow MCF/d Oil: Initial open flow Bbl/d
Final open flow MCF/d Final open flow Bbl/d
Time of open flow between initial and final tests Hours
Static rock pressure psig (surface pressure) after Hours

NOTE: ON BACK OF THIS FORM, PUT THE FOLLOWING: 1) DETAILS OF PERFORATED INTERVALS, FRACTURING OR STIMULATING, PHYSICAL CHANGE, ETC. 2) THE WELL LOG WHICH IS A SYSTEMATIC DETAILED GEOLOGICAL RECORD OF ALL FORMATIONS, INCLUDING COAL ENCOUNTERED BY THE WELLBORE.

For: PENNZOIL PRODUCTS COMPANY
By: 
Date: 3/11/98

MAR 13 1998

WET 1659