

Latitude

✓ 39° 27' 30"

80° 37' 30"

Longitude

Topo Location

7.5' Loc. 0.045 15' Loc. 2.925  
0.07W (calc.) 2.30W

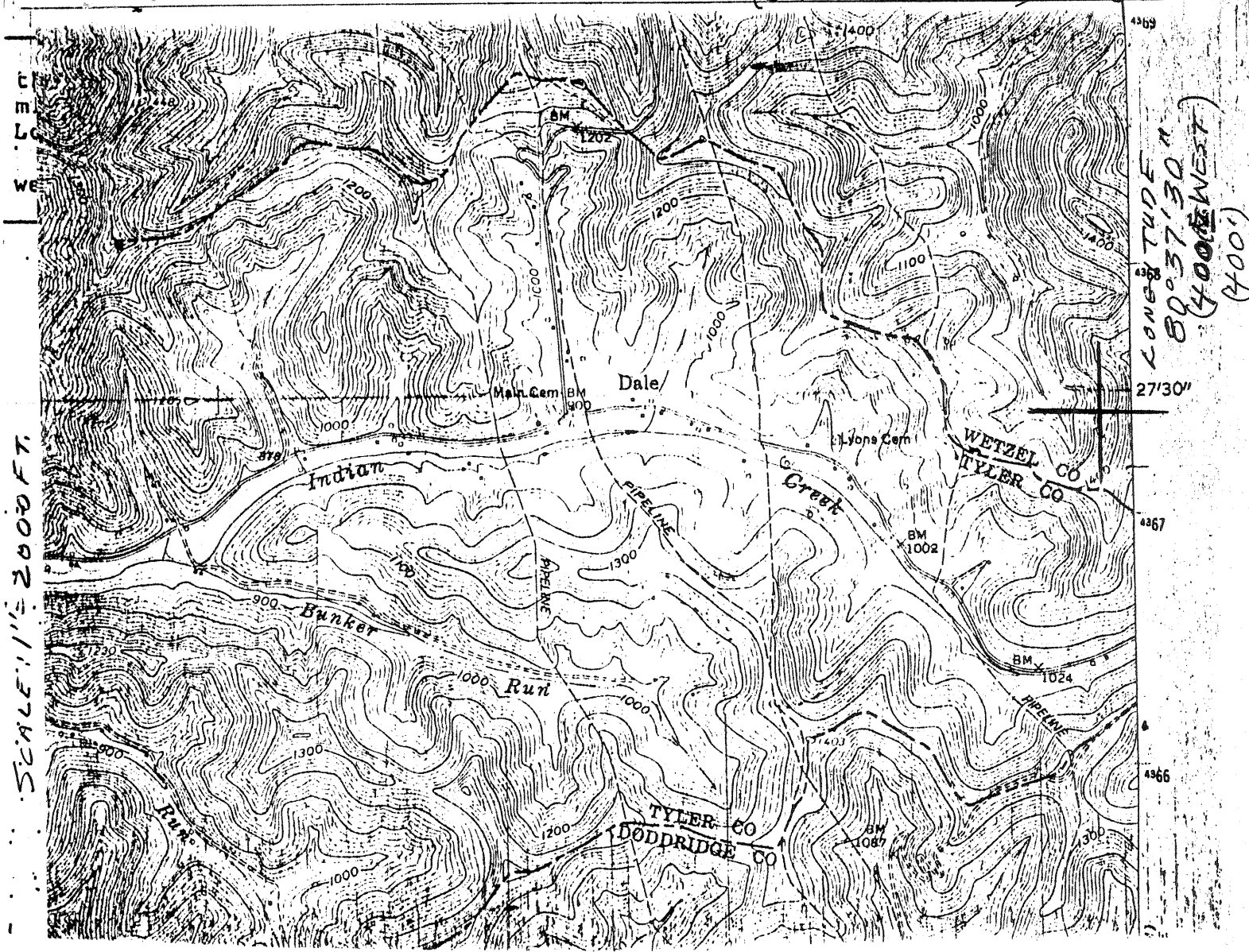
Company Geo. R. Kerns Corp  
Farm Ridge Morgan / O.P. McIntyre #  
15' Quad Center Point (NC)  
(sec.)  
7.5' Quad Center Point  
District Grant

correction (1020) probably 103 71884?

WELL LOCATION PLAT

County 103 Permit 1614N

LATITUDE 37° 40' N (5700' SOUTH) 250° South



I, the undersigned, hereby certify that this plat is correct to the best of my knowledge and belief.

SIGNED P. Leon Kerns  
TITLE PRES., Geo. R. Kerns Corp.

17249

DATE MAY 10, 1993  
OPERATORS WELL NO. O.P. MCINTYRE 1  
API WELL NO. 103-1614-N

STATE OF WEST VIRGINIA  
DEPARTMENT OF ENERGY  
OIL AND GAS DIVISION

DRILLED IN 1921

WELL TYPE: OIL  GAS  LIQUID INJECTION  WASTE DISPOSAL   
TYPE "GAS" PRODUCTION  STORAGE  DEEP  SHALLOW

LOCATION: ELEVATION 1300 EST WATER SHED BUFFALO RUN  
DISTRICT GRANT COUNTY WETZEL  
QUADRANGLE CENTER POINT 286  
DRILLED BY: O.P. MCINTYRE

SURFACE OWNER Currently: MADGE MORGAN ACREAGE (VERY LARGE)  
OIL & GAS ROYALTY OWNER George R. Kerns Corp. LEASE ACREAGE 20  
LEASE NO. \_\_\_\_\_

PRODUCING FORMATION BIG INJUN & MAXTON SANDS TOTAL DEPTH 2449'

WELL OPERATOR Geo. R. Kerns Corp. DESIGNATED AGENT Wayne G. Kerns

ADDRESS 325 So. THIRD AVE. ADDRESS SAME  
PADEN CITY, WV 26159

MAR 21 1994

State of West Virginia  
Division of Environmental Protection  
Section of Oil and Gas

Well Operator's Report of Well Work

Farm name: MORGAN, MADGE Operator Well No.: O.P. McINTYRE 1

LOCATION: Elevation: Quadrangle: CENTER POINT

District: GRANT County: WETZEL  
Latitude: 5700 Feet South of 39 Deg. 28Min. 20 Sec.  
Longitude 400 Feet West of 80 Deg. 37 Min. 30 Sec.

Company: KERNS, GEORGE R. CORPORAT  
325 SO. THIRD AVENUE  
PADEN CITY, WV 00002-6159

Agent: WAYNE G. KERNS

Inspector: RANDAL MICK  
Permit Issued: 03/17/94  
Well work Commenced: 08/01/20  
Well work Completed: 04/13/21  
Verbal Plugging  
Permission granted on:  
Rotary Cable  Rig  
Total Depth (feet) PBTD 2449 s.m  
Fresh water depths (ft) N/A

Salt water depths (ft) 2448

Is coal being mined in area (Y/N)? N  
Coal Depths (ft):

Casing & Tubing Size	Used in Drilling	Left in Well	Cement Fill Up Cu. Ft.
10"	238	238	N.C.
8"	1440	1440	N.C.
6"	2317	2317	N.C.
2"	<del>2448</del>	2440	

OPEN FLOW DATA

Producing formation MAXTON Pay zone depth (ft) 2207  
Gas: Initial open flow N/A MCF/d Oil: Initial open flow 5.0 Bbl/d  
Final open flow \_\_\_\_\_ MCF/d Final open flow 0.5 Bbl/d  
Time of open flow between initial and final tests \_\_\_\_\_ Hours  
Static rock Pressure N/C psig (surface pressure) after \_\_\_\_\_ Hours

Second producing formation BLEINNUN Pay zone depth (ft) 2447  
Gas: Initial open flow N/A MCF/d Oil: Initial open flow 4 Bbl/d  
Final open flow \_\_\_\_\_ MCF/d Final open flow \_\_\_\_\_ Bbl/d  
Time of open flow between initial and final tests \_\_\_\_\_ Hours  
Static rock Pressure N/A psig (surface pressure) after \_\_\_\_\_ Hours

NOTE: ON BACK OF THIS FORM PUT THE FOLLOWING: 1). DETAILS OF PERFORATED INTERVALS, FRACTURING OR STIMULATING, PHYSICAL CHANGE, ETC. 2). THE WELL LOG WHICH IS A SYSTEMATIC DETAILED GEOLOGICAL RECORD OF ALL FORMATIONS, INCLUDING COAL ENCOUNTERED BY THE WELLBORE.

For: KERNS, GEORGE R. CORPORATION JUN 11 1994  
By: P. Leon Kerns, PRES  
Date: 04/16/94

O.P. McIntyre # 1020

Carnegie Gas Co.

Commenced: Aug. 1, 1920

Completed: April 13, 1921

Elevation:

INTERVAL: Top MATTON 54  
to Top Big Lime = 103'  
to TOP Big Injun = 193'

FORMATION  
TOPS BY  
G.R. LOG

LOG

	Mapletown Coal	-----	752-756	
	Pgh. Coal	-----	NONE	
	Little Dunkard	-----	"	
	Big Dunkard	-----	1440-1480	
	Gas Sand	-----	1644-1690	
	1st Salt Sand	-----	1880-1920	
	2nd Salt Sand	-----	1938-2025	
2195	Maxon Sand	-----	2177-2212	
2216	SHALE	Show of Oil	-----	2207
2240	Little Lime	-----	2272-2280	
2260	Pencil Cave	-----	NONE	2200
2276	Big Lime	-----	2280-2360	2177
2365	Big Injun	-----	2360-2490	193
		Show of Oil	-(69'in)-	2429
		Oil Pay:	---(87'in)-	2447-2450
			27bbls. oil in 7days & 4bbls.water/day.	
	Drilled on to Gordon :			
	Gordon Stray	-----	3064-3092	
		Show of Gas	-----	3087
		Practically Dry		
	Total Depth	-----	3161	

Shooting

May 10, 1921: 12qts. Top: 2446 Bottom: 2450  
 May 10, 1921: 12qts. Top: 2427 Bottom: 2431  
 Aug. 25, 1943: 30qts. Top: 2441 Bottom: 2447 1/2  
 Aug. 25, 1943: Ripped casing in Maxon Sand.  
 Ripped from: 2193-2200 & 2207-2214

Casing

10"----238  
 8"-----1440  
 6"----2317

Remarks

Well producing from Maxon & Big Injun Sands.  
 Ripping casing increased prod. 1/2bbl./day.

Aug. 25, 1943: Shooter: B.B King,  
 Marietta Torpedo Co.

Perforated 6-shots @ 2209-14' by Sen. Surveyor on 5-16-77  
 Williams & FULL OPERATIONS

2490  
 2230  
 210

STATE OF WEST VIRGINIA  
DIVISION OF ENVIRONMENTAL PROTECTION  
SECTION OF OIL AND GAS

WELL REGISTER ASSIGNMENT

This API Number 47-103-01614, issued to KERNS, GEORGE R. CORPORATION is evidence of permission to operate the well that is referenced at the location described on the attached plat, subject to the provisions of Chapters 22 and 22B of the West Virginia Code of 1931, as amended, and all rules and regulations promulgated thereunder. The name and telephone number of the Oil and Gas Inspector for this well is RANDAL MICK 304-986-3324.

Spills or emergency discharges must be reported to 1-800-654-3312.

Failure to abide by all statutory and regulatory provisions governing all duties and operations hereunder may result in suspension or revocation of your permits and in addition may result in civil and/or criminal penalties.

The enclosed WR-35 must be completed by you and returned to this office. In addition annual production reports must be submitted on this well and failure to do so may require you to plug the well.

Theodore M. Streit  
Chief

By: 

Title: \_\_\_\_\_

Operator's Well No: O.P. McINTYRE 1

Farm Name: MORGAN, MADGE

API Well Number : 47-103-01614 N

Date Issued : 03/17/94