

4710301580P

WW-7
8-30-06



West Virginia Department of Environmental Protection
Office of Oil and Gas

WELL LOCATION FORM: GPS

API: 47-103-01580 WELL NO.: 7299

FARM NAME: B. W. PETERSON

RESPONSIBLE PARTY NAME: WEST VIRGINIA LAND RESOURCES INC.

COUNTY: WETZEL DISTRICT: GRANT

QUADRANGLE: BIG RUN W.VA

SURFACE OWNER: MAGNOLIA LAND PARTNERS LLC.

ROYALTY OWNER: _____

UTM GPS NORTHING: 4,373,476 m

(1082')

UTM GPS EASTING: 540,621 m GPS ELEVATION: 330 m

The Responsible Party named above has chosen to submit GPS coordinates in lieu of preparing a new well location plat for a plugging permit or assigned API number on the above well. The Office of Oil and Gas will not accept GPS coordinates that do not meet the following requirements:

- Datum: NAD 1983, Zone: 17 North, Coordinate Units: meters, Altitude: height above mean sea level (MSL) – meters.
- Accuracy to Datum – 3.05 meters
- Data Collection Method:

Survey grade GPS _____ : Post Processed Differential _____

Real-Time Differential _____

Mapping Grade GPS X : Post Processed Differential X

Real-Time Differential _____

4. Letter size copy of the topography map showing the well location.

I the undersigned, hereby certify this data is correct to the best of my knowledge and belief and shows all the information required by law and the regulations issued and prescribed by the Office of Oil and Gas.

Professional Surveyor

JANUARY 20, 2022

Signature

Title

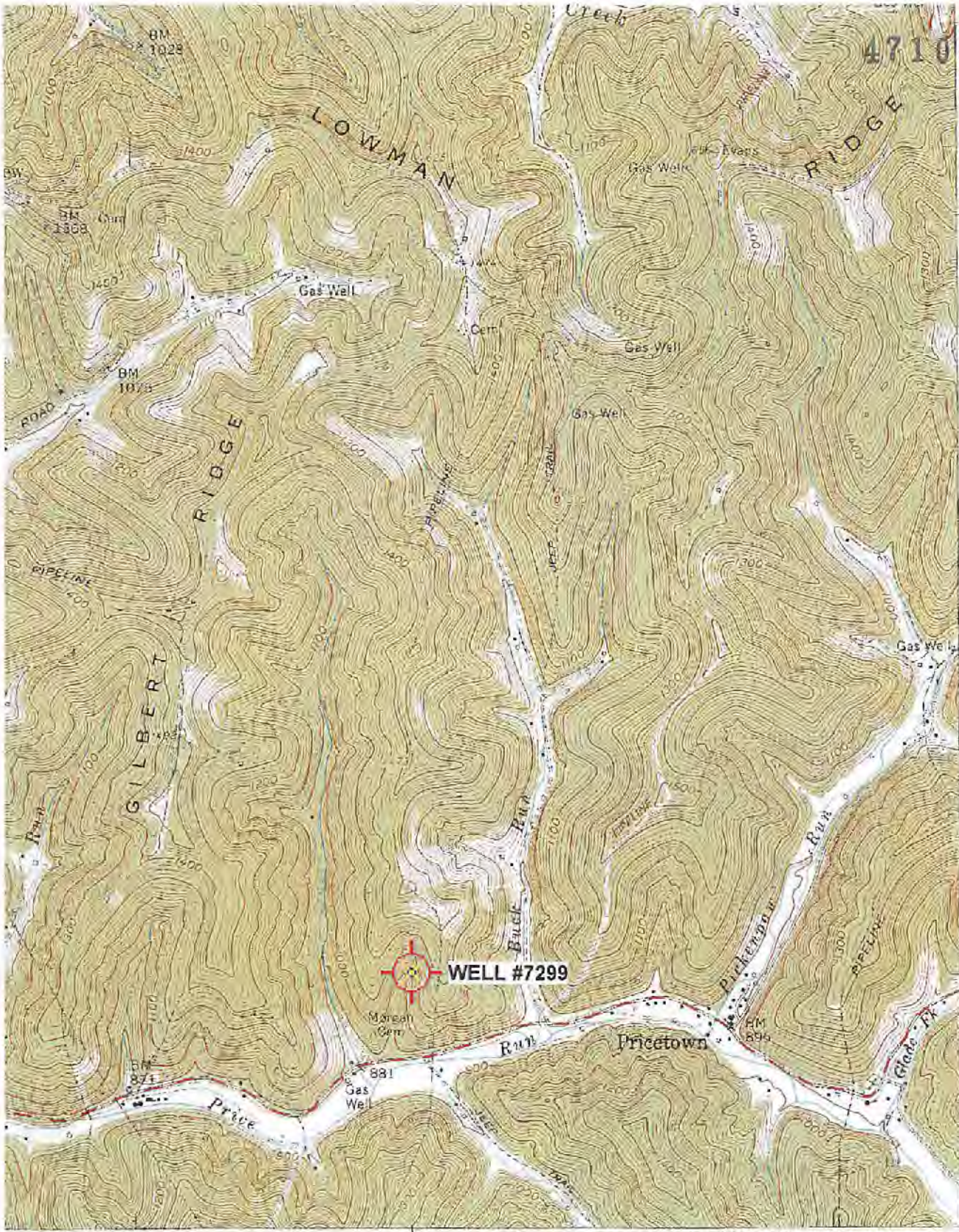
Date

RECEIVED
Office of Oil and Gas

FEB 14 2022

WV Department of Environmental Protection
04/08/2022

4710301580P



477
32'30"
476
475
474
473
39°30'

39 32'30" 40 41 80°30'

INTERIOR GEOLOGICAL SURVEY, RESTON, VIRG. 22192-1497
642000E

1 MILE
500 FEET
1
METER

ROAD CLASSIFICATION

- Heavy-duty
- Medium-duty
- Light-duty
- Unimproved dirt
- Slate Route



QUAD-ANGLE LOCATION

Printed on a color printer in compliance with...

WALLACE
1982 W.V.
RECEIVED
Office of Oil and Gas
FEB 14 2022
WV Department of
Environmental Protection

BIG RUN, W. VA.
SE/4 LITTLETON 15' QUADRANGLE
N3930—W8030/7.5
04/08/2022