

10301546 P

WW-7
8-30-06



West Virginia Department of Environmental Protection
Office of Oil and Gas

WELL LOCATION FORM: GPS

API: 103 47-095-01546 WELL NO.: N-15

FARM NAME: Henry Noland

RESPONSIBLE PARTY NAME: Ascent Resources - Marcellus LLC

COUNTY: Tyler WETZEL DISTRICT: McElroy GREEN

QUADRANGLE: Center Point

SURFACE OWNER: State of WV Public Land Corporation

ROYALTY OWNER: Ascent Resources - Marcellus LLC

UTM GPS NORTHING: 4369959.0

UTM GPS EASTING: 528458.3 GPS ELEVATION: 959'

The Responsible Party named above has chosen to submit GPS coordinates in lieu of preparing a new well location plat for a plugging permit or assigned API number on the above well. The Office of Oil and Gas will not accept GPS coordinates that do not meet the following requirements:

1. Datum: NAD 1983, Zone: 17 North, Coordinate Units: meters, Altitude: height above mean sea level (MSL) – meters.
2. Accuracy to Datum – 3.05 meters
3. Data Collection Method:

Survey grade GPS : Post Processed Differential
 Real-Time Differential
 Mapping Grade GPS : Post Processed Differential
 Real-Time Differential

RECEIVED
Office of Oil and Gas
SEP 15 2017
WV Department of Environmental Protection

4. **Letter size copy of the topography map showing the well location.**

I the undersigned, hereby certify this data is correct to the best of my knowledge and belief and shows all the information required by law and the regulations issued and prescribed by the Office of Oil and Gas.

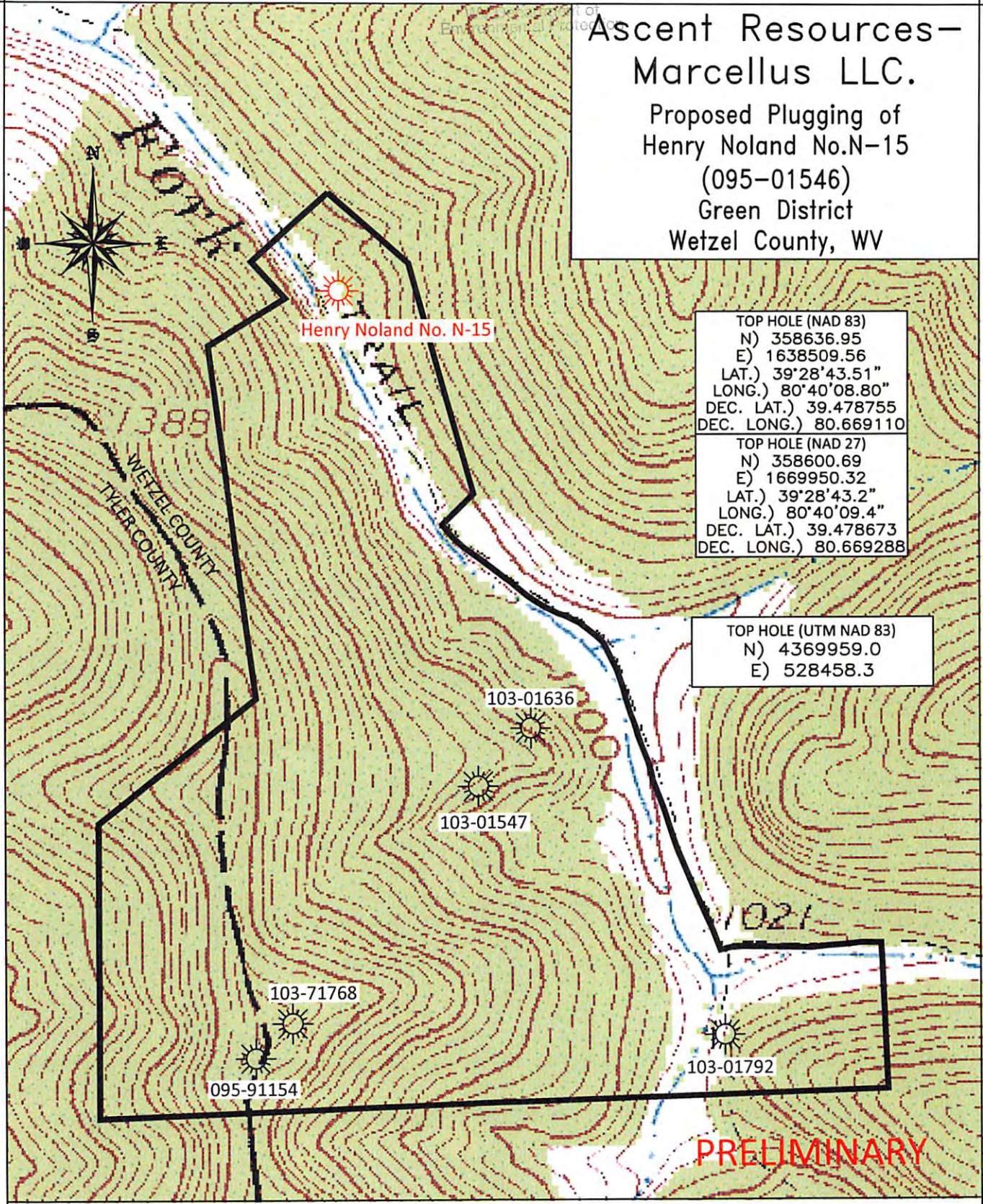
[Signature] Sr. Regulatory Analyst 8/29/2017
 Signature Title Date

10/06/2017

SEP 15 2017

Ascent Resources— Marcellus LLC.

Proposed Plugging of
Henry Noland No. N-15
(095-01546)
Green District
Wetzel County, WV



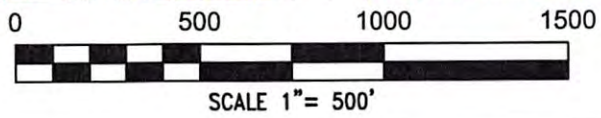
TOP HOLE (NAD 83)
N) 358636.95
E) 1638509.56
LAT.) 39°28'43.51"
LONG.) 80°40'08.80"
DEC. LAT.) 39.478755
DEC. LONG.) 80.669110

TOP HOLE (NAD 27)
N) 358600.69
E) 1669950.32
LAT.) 39°28'43.2"
LONG.) 80°40'09.4"
DEC. LAT.) 39.478673
DEC. LONG.) 80.669288

TOP HOLE (UTM NAD 83)
N) 4369959.0
E) 528458.3

PRELIMINARY

BOORD, BENCHEK and ASSOC., INC.
Engineering, Surveying, Construction,
and Mining Services
Southpointe, PA 15317 Phone: 724-746-1055



JULY 27, 2017