

10301540P

WW-7
8-30-06

West Virginia Department of Environmental Protection
Office of Oil & Gas

WELL LOCATION FORM: GPS

API: 47- 103 - 1540 WELL NO: No.H-14

FARM NAME: F.L. Hoge

RESPONSIBLE PARTY NAME: H.G. Energy, LLC

COUNTY: Wetzel DISTRICT: Green 5

QUADRANGLE: Centerpoint 7.5' 296

SURFACE OWNER: W.Va. Public Lands Corp.

ROYALTY OWNER: HG Energy, LLC et al.

UTM GPS NORTHING: 4,369,490 (NAD 83)

UTM GPS EASTING: 526,492 (NAD 83) GPS ELEVATION: 412 m.

The Responsible Party named above has chosen to submit GPS coordinates in lieu of preparing a new well location plat for a plugging permit on the above well. The Office of Oil & Gas will not accept GPS coordinates that do not meet the following requirements:

1. Datum: NAD 1983, Zone:17 North, Coordinate Units: meters, Altitude: height above mean sea level (MSL) - meters.
2. Accuracy to Datum - 3.05 meters
3. Data Collection Method:

Survey Grade GPS Post Processed Differential
 Real-Time Differential
 Mapping Grade GPS Post Processed Differential
 Real-Time Differential

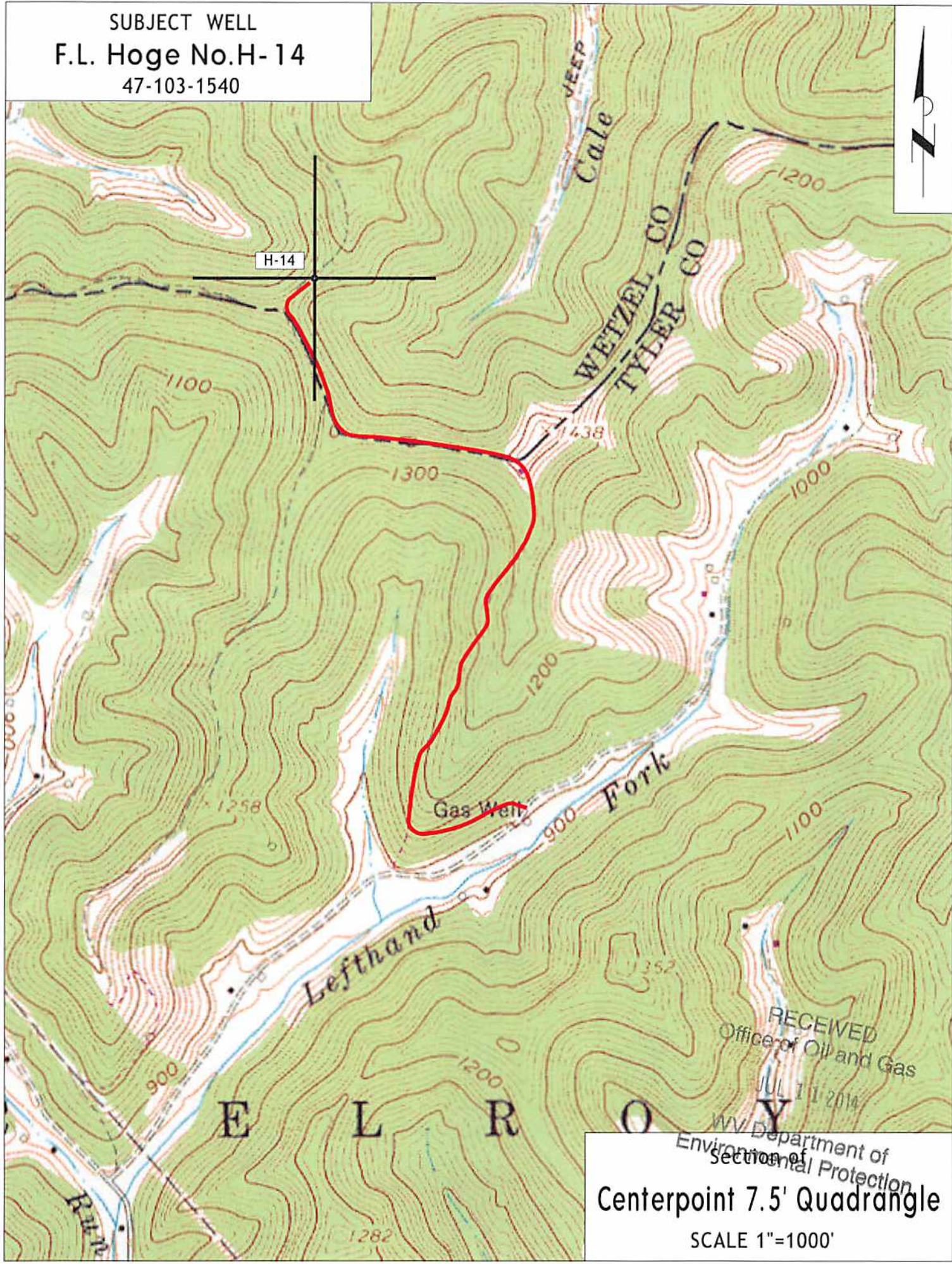
I the undersigned, hereby certify this data is correct to the best of my knowledge and belief and shows all the information required by law and the regulations issued and prescribed by the Office of Oil and Gas.

Diane C White Diane C White
Signature

June 26, 2014
Date

RECEIVED
Office of Oil and Gas
JUL 11 2014
WV Department of Environmental Protection
Designated Agent
Title

SUBJECT WELL
F.L. Hoge No.H-14
47-103-1540



RECEIVED
Office of Oil and Gas
JUL 11 2014
WV Department of
Environmental Protection
Section of
Centerpoint 7.5' Quadrangle
SCALE 1"=1000'