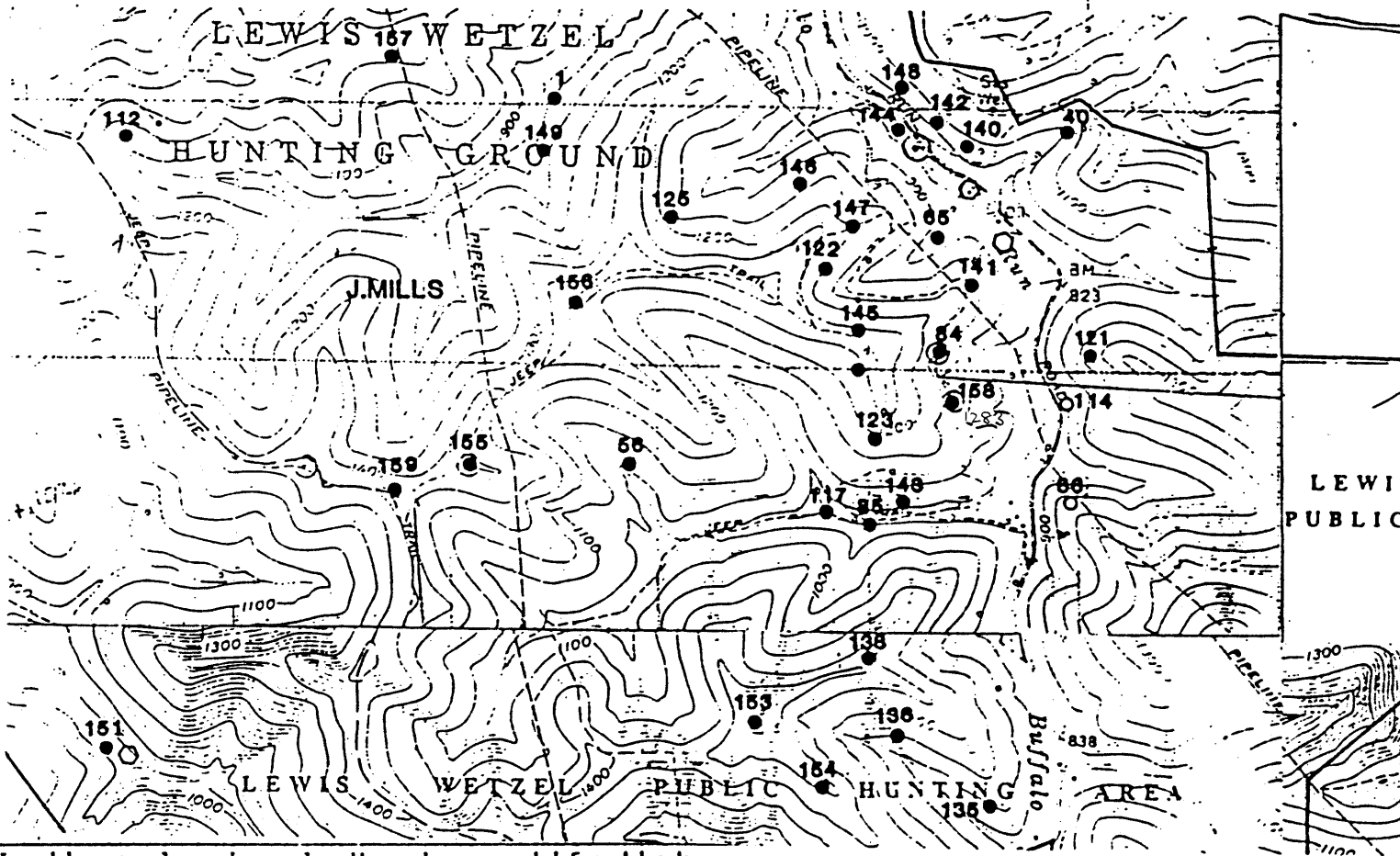


Please attach
API # 1509

- 1) Attach a photo copy of the location of the well on a 7.5 minute Quadrangle with the corresponding Longitude and Latitude.
2) Designate the location of the well with the symbol(+).



I, the undersigned, hereby certify that this plat is correct to the best of my knowledge and belief.

SIGNED *James Lunt*
TITLE District Manager

DATE July 25, 1990
OPERATORS WELL NO. J. Mills #123
API WELL NO. 103-1509

STATE OF WEST VIRGINIA
DEPARTMENT OF ENERGY
OIL AND GAS DIVISION

WELL TYPE: OIL GAS LIQUID INJECTION WASTE DISPOSAL
(IE "GAS" PRODUCTION STORAGE DEEP SHALLOW

LOCATION: ELEVATION 1160' WATER SHED Buffalo Run
DISTRICT Grant COUNTY Wetzel
QUADRANGLE Pine Grove

SURFACE OWNER Mills - Wetzel Lands, Inc. ACREAGE 5451 AC.

OIL & GAS ROYALTY OWNER Mills - Wetzel Lands, Inc. LEASE ACREAGE 5451 AC.
LEASE NO. W-195

PRODUCING FORMATION Gordon TOTAL DEPTH 3170'

WELL OPERATOR Quaker State Corporation DESIGNATED AGENT Frank Rotunda

ADDRESS P.O. Box 189 ADDRESS P.O. Box 823
Belpre, OH 45714 Parkersburg, WV 26102

JUL 21 1992

Pine Grove

LATITUDE

39° 32' 30"

80° 31' 30"

LONGITUDE

7'5 OGIS topo location

7.5' loc	<u>2.485</u>	15' loc	_____
	<u>.850</u>	(calc.)	_____

Company _____

Farm J Mills 123

Quad Pine Grove

County Detrol

District Grant

WELL LOCATION MAP

File No. 103-1508