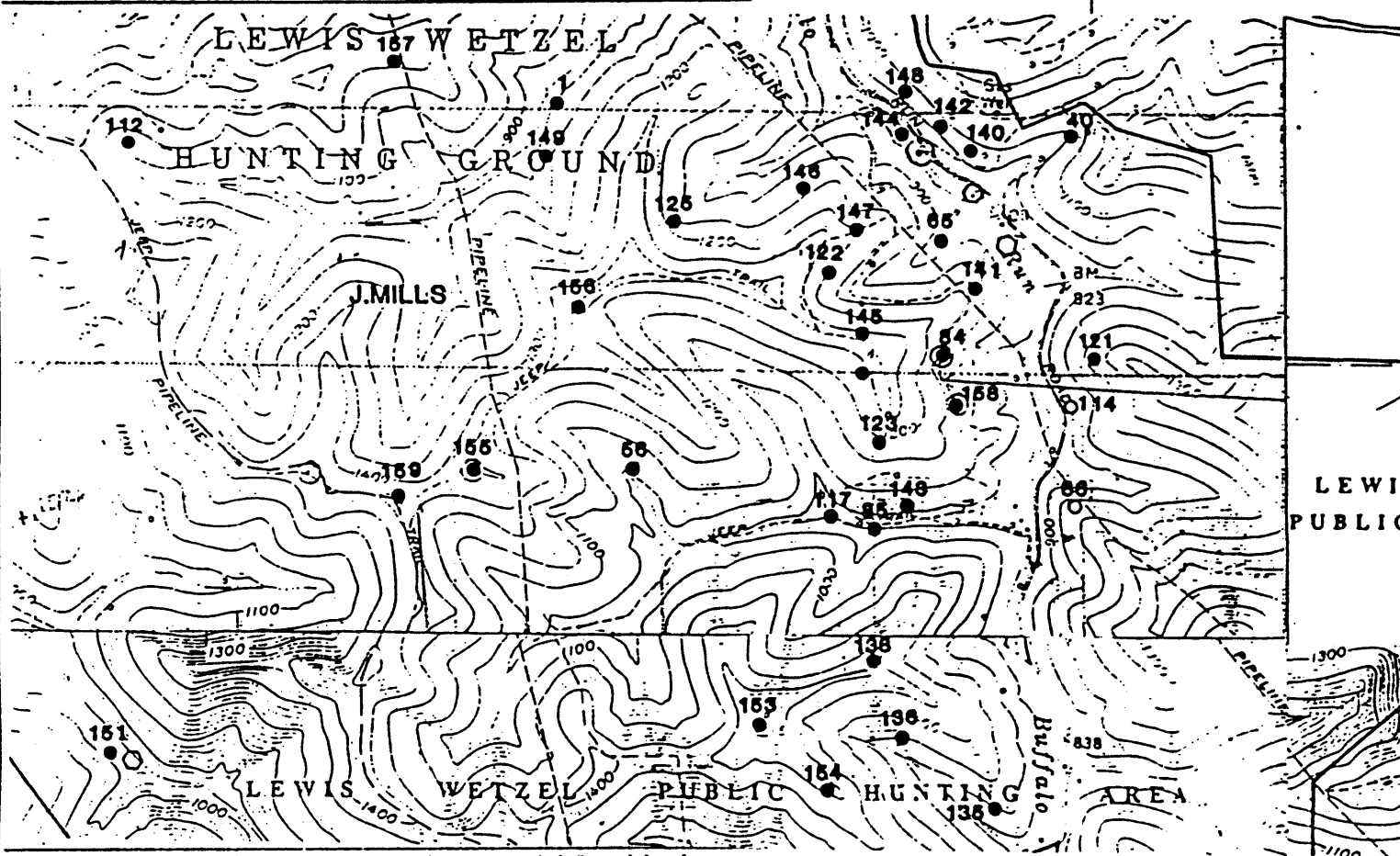


of lease area
 API #. 1508

1) Attach a photo copy of the location of the well on a 7.5 minute Quadrangle with the corresponding Longitude and Latitude.
 2) Designate the location of the well with the symbol(+).



I, the undersigned, hereby certify that this plat is correct to the best of my knowledge and belief.

SIGNED *Dennis O'Neil*
 TITLE District Manager

DATE July 25, 19 90
 OPERATORS WELL NO. J. Mills #121
 API WELL NO. 103-1508

STATE OF WEST VIRGINIA
 DEPARTMENT OF ENERGY
 OIL AND GAS DIVISION

WELL TYPE: OIL GAS LIQUID INJECTION WASTE DISPOSAL
 (IE "GAS" PRODUCTION STORAGE DEEP SHALLOW

LOCATION: ELEVATION 1130' WATER SHED Buffalo Run
 DISTRICT Grant COUNTY Wetzel
 QUADRANGLE Pine Grove

SURFACE OWNER Mills - Wetzel Lands, Inc ACREAGE 5451 AC.

OIL & GAS ROYALTY OWNER Mills - Wetzel Lands, Inc. LEASE ACREAGE 5451 AC.
 LEASE NO. W-195

PRODUCING FORMATION Gordon TOTAL DEPTH 3058'

WELL OPERATOR Quaker State Corporation DESIGNATED AGENT Frank Rotunda

ADDRESS P.O. Box 189 ADDRESS P.O. Box 823
Belpre, OH 45714 Parkersburg, WV 26102

JUL 21 1992
 1-1508-9

LATITUDE

39° 32' 30"

88 37' 30"

LONGITUDE

7'5 OGIS topo location

7.5' loc	<u>2.255</u>	15' loc	_____
	<u>.37w</u>	(calc.)	_____

Company _____

Farm J Mills 121

Quad Pine Grove

County Wetzel

District Grant

WELL LOCATION MAP

File No. 103-1508