

Latitude 39° 45'

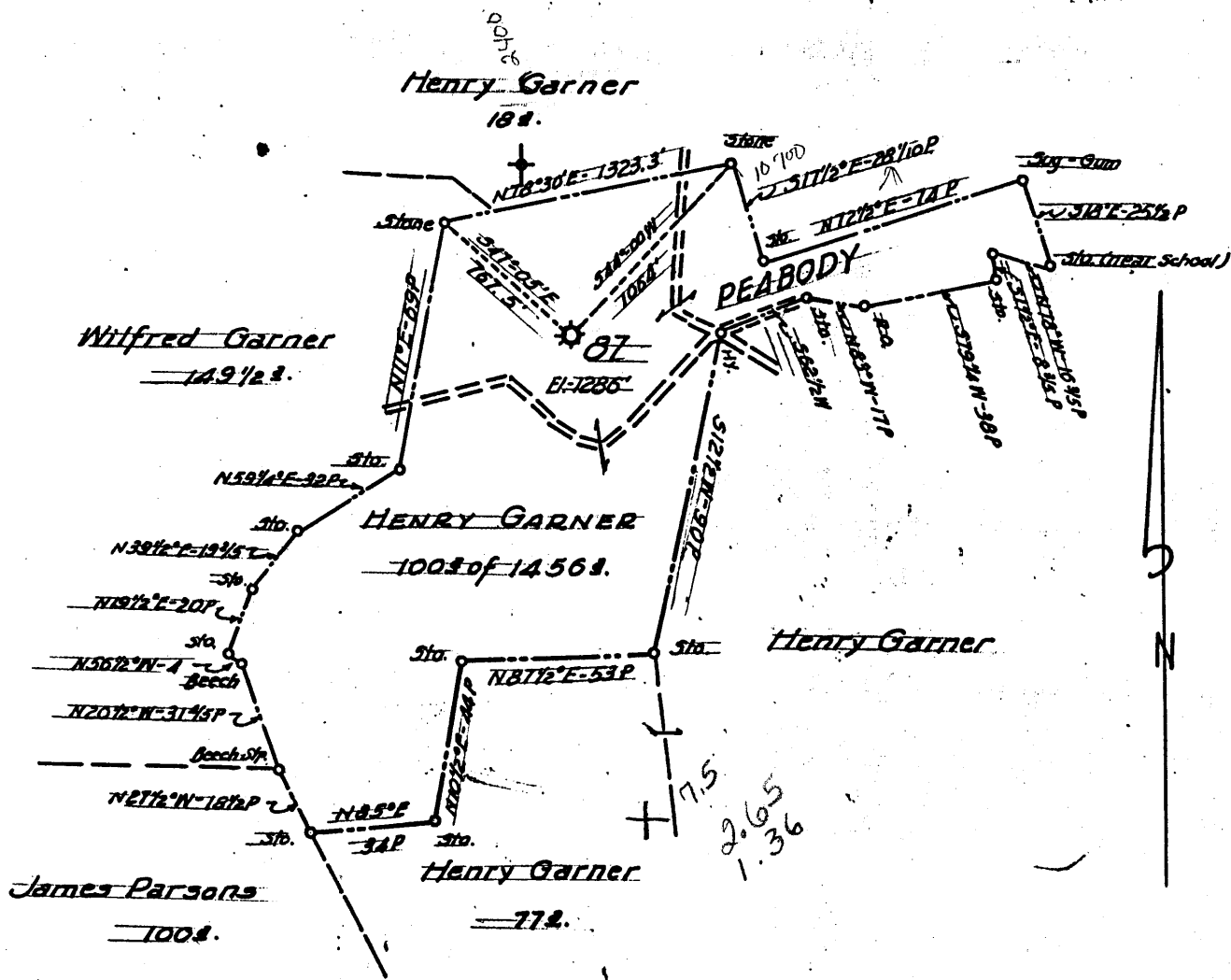
**RECEIVED**

SEP 17 '91

Division of Energy  
Oil and Gas Section

Longitude 80° 40'

80 42 30



- New Location ..
- Drill Deeper .....
- Abandonment .....

FORMERLY H. N. G. Co. WELL N° 87

Company A. M. SNIDER (3750)

Address HUNDRED, W. VA.

Farm HENRY GARNER

Tract \_\_\_\_\_ Acres 1456 Lease No. \_\_\_\_\_

Well (Farm) No. \_\_\_\_\_ Serial No. 87

Elevation (Spirit Level) 1286'

Quadrangle LITTLETON Wileysville

County WETZEL District PROCTOR

Engineer HENRY A. HAIN

Engineer's Registration No. 3150

File No. AMS-29-60 Drawing No. \_\_\_\_\_

Date \_\_\_\_\_ Scale 1" = 50 POLES

STATE OF WEST VIRGINIA  
DEPARTMENT OF MINES  
OIL AND GAS DIVISION  
CHARLESTON

**WELL LOCATION MAP**

FILE NO. 103-1497

+ Denotes location of well on United States Topographic Maps, scale 1 to 62,500, latitude and longitude lines being represented by border lines as shown.

- Denotes one inch spaces on border line of original tracing.

Latitude

133s  
204w

Longitude

Topo Location

current operator  
Arkus Oil-Gas

7.5' Loc. \_\_\_\_\_ 15' Loc. 3.215  
\_\_\_\_\_ (calc.) 4.26W

Company A M Smides  
Farm Henry Garner #87  
15' Quad Littleton NW  
(sec.)  
7.5' Quad Wisey 880  
District Proctor

WELL LOCATION PLAT

County 103 Permit 1497

103-1497

Henry Garner, No. - 87 Well (289A)  
(Lease 681 - 1456 acres)

Proctor Dist., Wetzel Co., W. Va.; on hill at extreme  
head of Left Fork of Proctor Creek just northwest of Peabody;  
completed Sept. 7, 1900; by \_\_\_\_\_; purchased April  
1, 1902; by Hope Natural Gas Co.; elevation, \_\_\_\_\_.

	Top Feet	Bottom Feet
Sand, <u>Gordon</u> .....	2978	2984

Gordon Sand gas well; 6,249,000 cu. ft.  
Rock pressure, 1100 lbs.