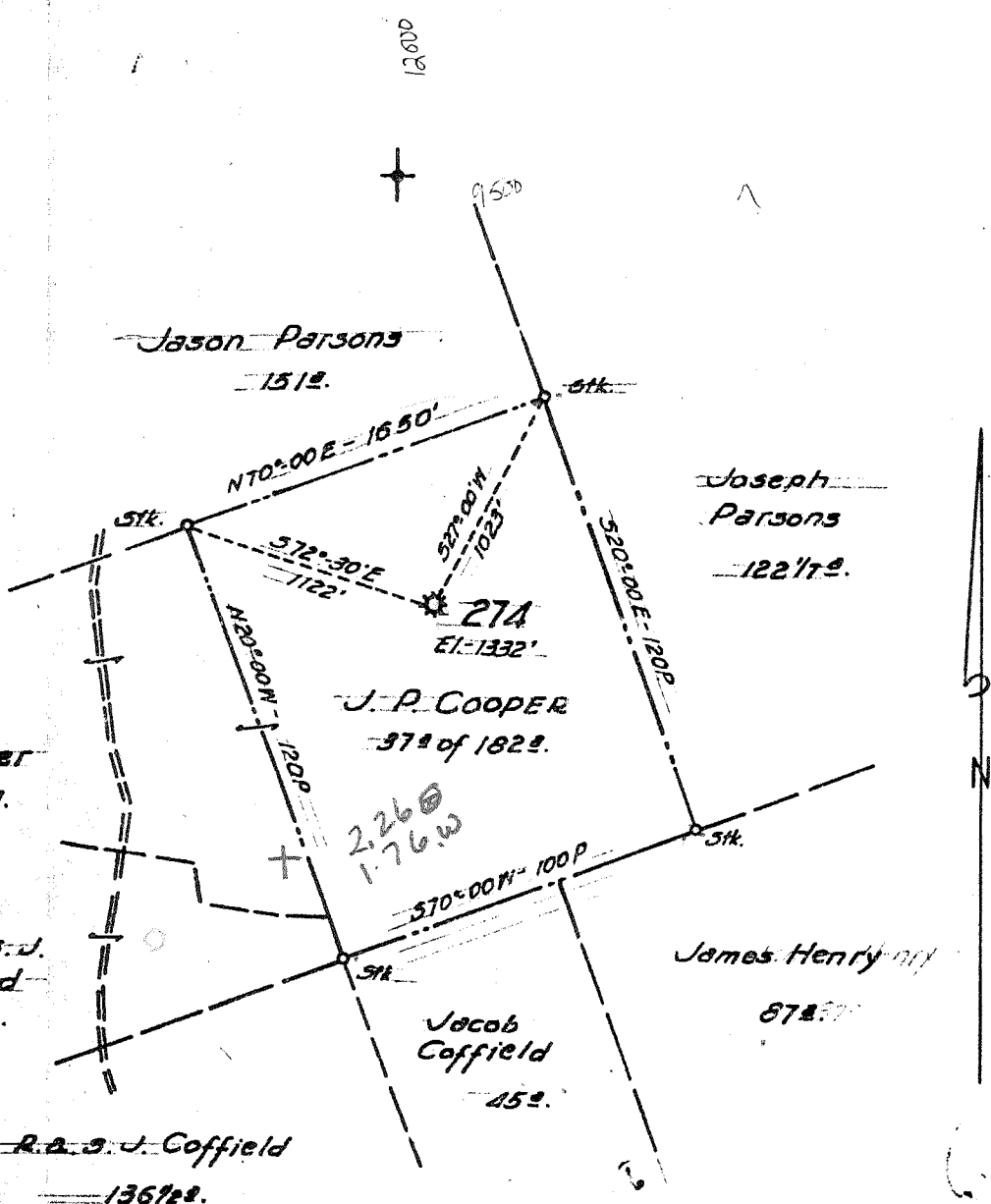


Latitude 39° 45'

Longitude 80° 40'

80 42 30



**RECEIVED**  
 SEP 17 91  
 Division of Energy  
 Oil and Gas Section

current operator: Parsons Oil & Gas  
 FORMERLY H.N.G. Co. WELL No 274

New Location   
 Drill Deeper   
 Abandonment

Company A. M. SNIDER 39500  
 Address HUNDRED, W. VA.  
 Farm J. P. COOPER  
 Tract \_\_\_\_\_ Acres 182 Lease No. \_\_\_\_\_  
 Well (Farm) No. \_\_\_\_\_ Serial No. 274  
 Elevation (Spirit Level) 1332'  
 Quadrangle LITTLETON  
 County WETZEL District PROCTOR  
 Engineer HENRY A. HAIN  
 Engineer's Registration No. 3150  
 File No. A.M.S. - 25-60 Drawing No. \_\_\_\_\_  
 Date \_\_\_\_\_ Scale 1" = 50 POLES

STATE OF WEST VIRGINIA  
 DEPARTMENT OF MINES  
 OIL AND GAS DIVISION  
 CHARLESTON

**WELL LOCATION MAP**  
 FILE NO. 103-1495

+ Denotes location of well on United States Topographic Maps, scale 1 to 62,500, latitude and longitude lines being represented by border lines as shown.  
 - Denotes one inch spaces on border line of original tracing.

MAR 1 1907

Widewater

103-1495

Joseph P. Cooper, No. - 274 Well (2920)  
 (Lease 1,909 - 182 acres)

Proctor Dist., Wetzel Co., W. Va.; on a western branch of  
 Brushy Fork of Whetstone Creek 1.0 mile N 5° E of Peabody and  
 1.7 miles southwest of Saint Joseph; completed Nov. 2, 1902;  
 deepened Nov. 13, 1907; by Hope Natural Gas Co., elevation 1332.

	Top Feet	Bottom Feet
Sand, <u>Gordon</u> .....	2998	3021
Gordon Sand gas well; 4,600,000 cu. ft.		300

Rock pressure, 620 lbs.  
 2 1/2" casing, 100' depth, 1902; 4 1/2" casing, 300' depth, 1907.  
 Deeper drilling was dry. Bottom of perforation, 350'.

Moundsville sand gas well; 800,000 cu. ft.  
 Rock pressure, 200 lbs.