

WW-7
8-30-06



West Virginia Department of Environmental Protection
Office of Oil and Gas

WELL LOCATION FORM: GPS

API: 47-103-01483 WELL NO.: 7195

FARM NAME: LEVI SHUMAN HEIRS

RESPONSIBLE PARTY NAME: WEST VIRGINIA LAND RESOURCES INC.

COUNTY: WETZEL DISTRICT: GRANT

QUADRANGLE: FOLSOM W.VA

SURFACE OWNER: BERNARD R. ELLIOTT SR.

ROYALTY OWNER: _____

UTM GPS NORTHING: 4,371,985 m

UTM GPS EASTING: 541,663 m GPS ELEVATION: 333 m

1092'

The Responsible Party named above has chosen to submit GPS coordinates in lieu of preparing a new well location plat for a plugging permit or assigned API number on the above well. The Office of Oil and Gas will not accept GPS coordinates that do not meet the following requirements:

1. Datum: NAD 1983, Zone: 17 North, Coordinate Units: meters, Altitude: height above mean sea level (MSL) – meters.
2. Accuracy to Datum – 3.05 meters
3. Data Collection Method:

Survey grade GPS x : Post Processed Differential _____
Real-Time Differential X

Mapping Grade GPS _____ : Post Processed Differential _____
Real-Time Differential _____

4. Letter size copy of the topography map showing the well location.

I the undersigned, hereby certify this data is correct to the best of my knowledge and belief and shows all the information required by law and the regulations issued and prescribed by the Office of Oil and Gas.

RECEIVED
Office of Oil and Gas

AUG 16 2021

WV Department of
Environmental Protection

Professional Surveyor

JULY 5, 2021

Signature

Title

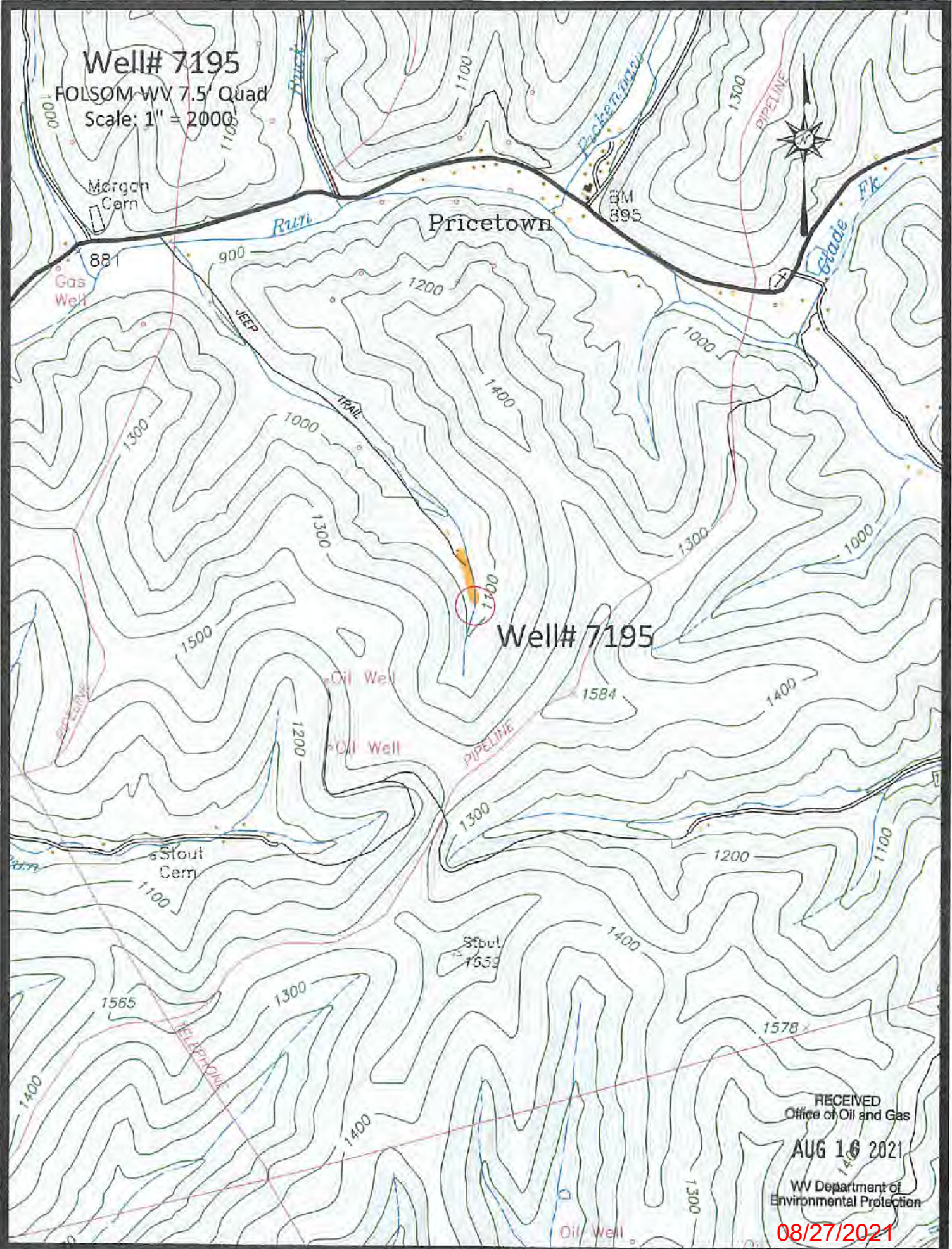
Date

08/27/2021

Well# 7195

FOLSOM-WV 7.5' Quad

Scale: 1" = 2000'



Well# 7195

RECEIVED
Office of Oil and Gas
AUG 16 2021
WV Department of
Environmental Protection
08/27/2021

Oil Well
Hester Road

Well# 7195

FOLSOM WV 7.5' Quad

Scale: 1" = 500'



1000

1400

1300

1100

Well# 7195

Oil Well

1584

1200

Oil Well

PIPELINE

1300

RECEIVED
Office of Oil and Gas

AUG 16 2021

WV Department of
Environmental Protection

08/27/2021

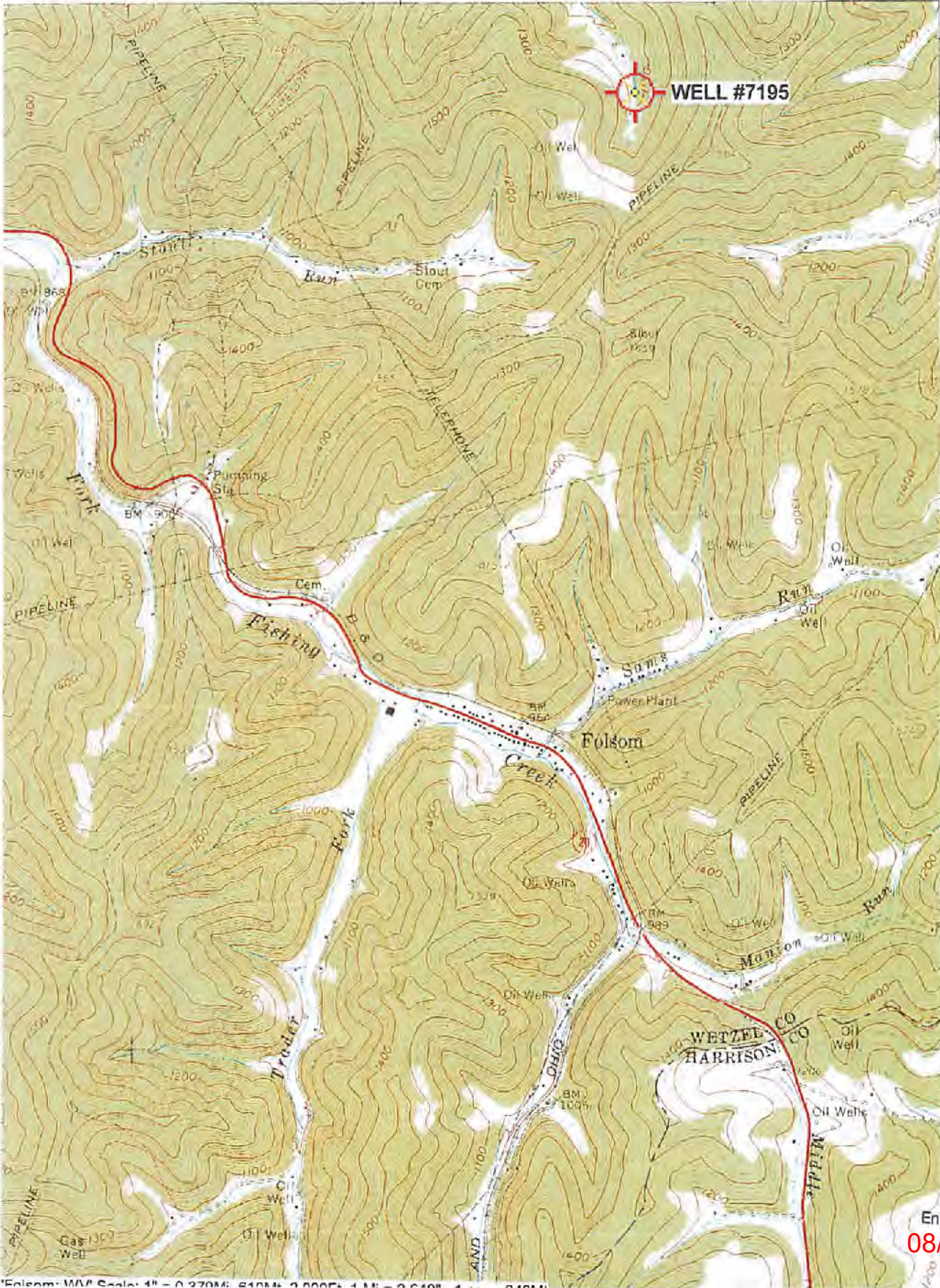
Arrow Q. 1

47-103-01483P

FOLSOM QUADRANGLE
WEST VIRGINIA
7.5 MINUTE SERIES (TOPOGRAPHIC)
NE/4 CENTER POINT 15' QUADRANGLE

1983 H/SW
(GLOVER GAP)

339 32'30" 340 1 710 000 FEET 342 80° 30' 39° 30'



4172
4171
360 000
FEET
4170
4169
4168
27'30"

RECEIVED
Office of Oil and Gas
AUG 16 2021
WV Department of
Environmental Protection
08/27/2021

Folsom, WV Scale: 1" = 0.3704; 610M; 2,000F; 4 M = 0.6401