

Minimum Error of Closure Less than 1 in 2000

Source of Elevation U.S.G.S. BM#165 RHP on Pickenpaw Road  
Elev. 980.00

I, the undersigned, hereby certify that this map is correct to the best of my knowledge and belief and shows all the information required by paragraph 6 of the rules and regulations of the oil and gas section of the mining laws of West Virginia.

Signed: *J. Z. Shuck*  
Squares: N S E W

Flugging and Recompletion in Coal    
Fracture    
New Location    
Drill Deeper    
Abandonment  9/22/75

Map No.

U.S. Energy Research and Development Administration  
Address P.O. Box 880, Morgantown, WV 26505  
Farm Walter B. Smith  
Tract Acres 74 Lease No. M.D. Snodgrass  
Well (Farm) No. No. 2 Serial No.   
Elevation (Spirit Level) 1011.97  
Quadrangle Glover Gap, Mannington 15'  
County Wetzel District Grant  
Surveyor L. Z. SHUCK  
Surveyor's Registration No. 4596  
File No.  Drawing No.   
Date Sept. 15, 1975 Scale 1" = 200'

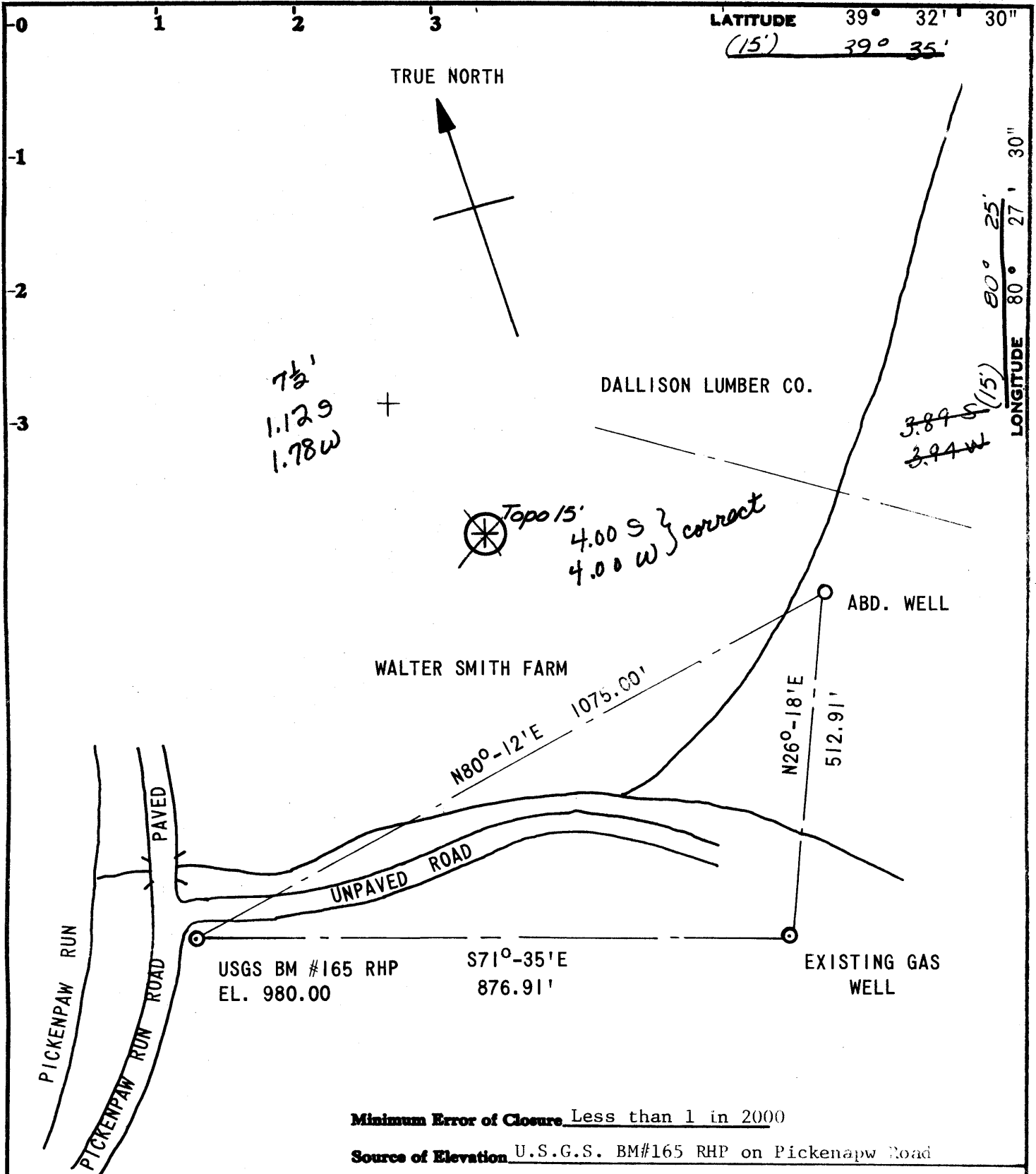
STATE OF WEST VIRGINIA  
DEPARTMENT OF MINES  
OIL AND GAS DIVISION  
CHARLESTON

WELL LOCATION MAP  
FILE NO. WET-1249-A

+ Denotes location of well on United States Topographic Maps, scale 1 to 24,000 latitude and longitude lines being represented by border lines as shown.

- Denotes one inch spaces on border line of original tracing.

47-103 AUG 30 1987



Minimum Error of Closure Less than 1 in 2000

Source of Elevation U.S.G.S. BM#165 RHP on Pickenapw Road  
Elev. 980.00

I, the undersigned, hereby certify that this map is correct to the best of my knowledge and belief and shows all the information required by paragraph 6 of the rules and regulations of the oil and gas section of the mining laws of West Virginia.

Signed: *J. S. Shuck*  
Squares: N S E W

- Plugging and Recompletion in Coal
- Fracture
- New Location
- Drill Deeper
- Abandonment  9/22/75

Map No.

Company U.S. Energy Research and Development Administration

Address P.O. Box 600, Morgantown, WV 26505

Farm Walter B. Smith

Tract Acres 14 Lease No.             
M.D. Snowgrass

Well (Farm) No. No. 2 Serial No.           

Elevation (Spirit Level) 1011.71 SW

Quadrangle Glover Gap, Mannington 15'

County Netzel District Grant

Surveyor L. Z. SHUCK

Surveyor's Registration No. 4596

File No.            Drawing No.           

Date Sept. 15, 1975 Scale 1" = 200'

STATE OF WEST VIRGINIA  
DEPARTMENT OF MINES  
OIL AND GAS DIVISION  
CHARLESTON

WELL LOCATION MAP  
FILE NO. WET-1249-A

+ Denotes location of well on United States Topographic Maps, scale 1 to 24,000, latitude and longitude lines being represented by border lines as shown.

- Denotes one inch spaces on border line of original tracing.

47-103



STATE OF WEST VIRGINIA  
DEPARTMENT OF MINES  
OIL AND GAS WELLS DIVISION

Rotary   
Spudder   
Cable Tools   
Storage

Quadrangle Glover Gap

Permit No.

WELL RECORD

Oil or Gas Well GAS  
(KIND)

Company U.S. Energy Research & Development Adm.  
Address P.O. Box 880, Morgantown, WV 26505  
Farm Walter B. Smith Acres 74  
Location (waters) Pickenpaw Run  
Well No. M. D. Snodgrass No. 2 Elev. 1011.97  
District Grant County Wetzel  
The surface of tract is owned in fee by Walter B. Smith  
Address Smithfield, WV  
Mineral rights are owned by Mr. & Mrs. Rex Smith  
Address Smithfield, WV  
Drilling commenced Unknown  
Drilling completed Feb. 7, 1919  
Date Shot From To  
With  
Open Flow 10ths Water in Inch  
10ths Merc. in Inch  
Volume Cu. Ft.  
Rock Pressure lbs. hrs.  
Oil bbls., 1st 24 hrs.

Casing and Tubing	Used in Drilling	Left in Well	Packers
Size			Kind of Packer
16			
13			
10	433	?	Size of
8 1/4	1345	?	
6 3/4	2084	?	Depth set
5 3/16	2708	?	
4 1/2			
3			Perf. top
2			Perf. bottom
Liners Used			Perf. top
			Perf. bottom

WELL ACIDIZED (DETAILS)  
WELL FRACTURED (DETAILS)  
RESULT AFTER TREATMENT (Initial open Flow or bbls.)  
ROCK PRESSURE AFTER TREATMENT HOURS  
Fresh Water Feet  
Salt Water Feet  
Producing Sand Fifty foot & Gordon ? Depth 2773-2794 2957-2973

Attach copy of cementing record.  
CASING CEMENTED SIZE No. Ft. Date  
Amount of cement used (bags)  
Name of Service Co.  
COAL WAS ENCOUNTERED AT 860 FEET INCHES  
FEET INCHES FEET INCHES  
FEET INCHES FEET INCHES

Formation	Color	Hard or Soft	Top	Bottom	Oil, Gas or Water	Depth	Remarks
Pittsburgh Coal	-	-	860	867	-	-	
Big Lime	-	-	2085	2147	-	-	
Big Injun	-	-	2147	2285	-	-	
Fifty Foot	-	-	2773	2794	Gas	-	
Stray Sand	-	-	2919	2953	-	-	
Gordon Sand	-	-	2957	2973	Oil Show	-	
Total Depth	-	-	-	3000	-	-	

