

West Virginia Department of Environmental Protection
Office of Oil & Gas
WELL LOCATION FORM: GPS

API: 47- 103 - 1096 P WELL NO: 1

FARM NAME: Robinson Improvement Co.

RESPONSIBLE PARTY NAME: East Resources, Inc.

COUNTY: Wetzel DISTRICT: Grant

QUADRANGLE: Folsom 7.5'

SURFACE OWNER: Coastal Lumber Co.

ROYALTY OWNER: East Resources, Inc. et al.

UTM GPS NORTHING: 4,366,060 (NAD 27)

UTM GPS EASTING: 540,038 (NAD 27) GPS ELEVATION: 322 m.

The Responsible Party named above has chosen to submit GPS coordinates in lieu of preparing a new well location plat for a plugging permit on the above well. The Office of Oil & Gas will not accept GPS coordinates that do not meet the following requirements:

1. Datum: NAD 1983, Zone:17 North, Coordinate Units: meters, Altitude: height above mean sea level (MSL) - meters.
2. Accuracy to Datum - 3.05 meters
3. Data Collection Method:

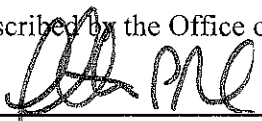
Survey Grade GPS Post Processed Differential
 Real-Time Differential

Mapping Grade GPS Post Processed Differential
 Real-Time Differential

RECEIVED
Office of Oil & Gas
OCT 7 2011

WV Department of
Environmental Protection

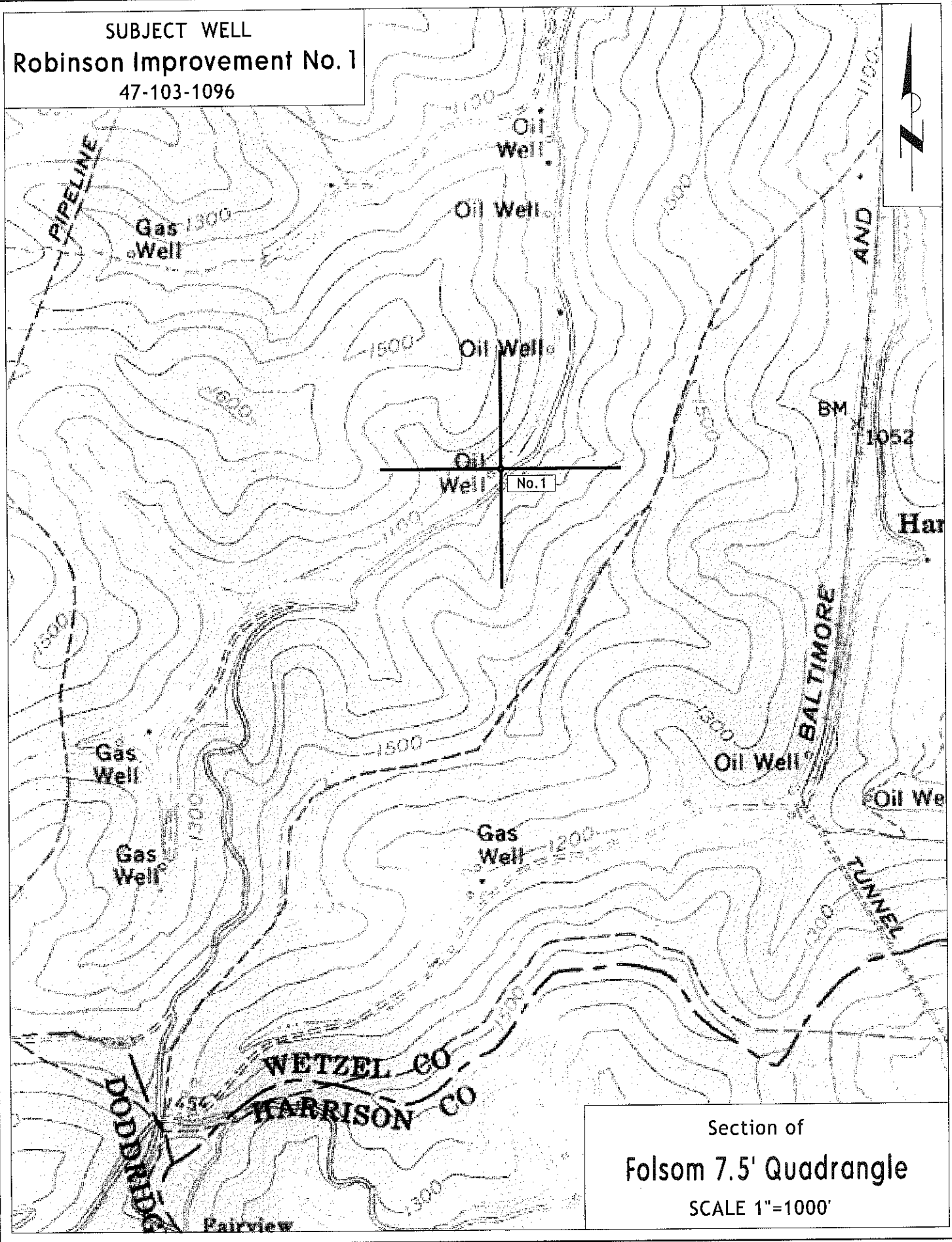
I the undersigned, hereby certify this data is correct to the best of my knowledge and belief and shows all the information required by law and the regulations issued and prescribed by the Office of Oil and Gas.


 Signature Timothy P. Roush

Professional Surveyor
 Title

October 3, 2011
 Date

SUBJECT WELL
Robinson Improvement No. 1
47-103-1096



Section of
Folsom 7.5' Quadrangle
SCALE 1"=1000'