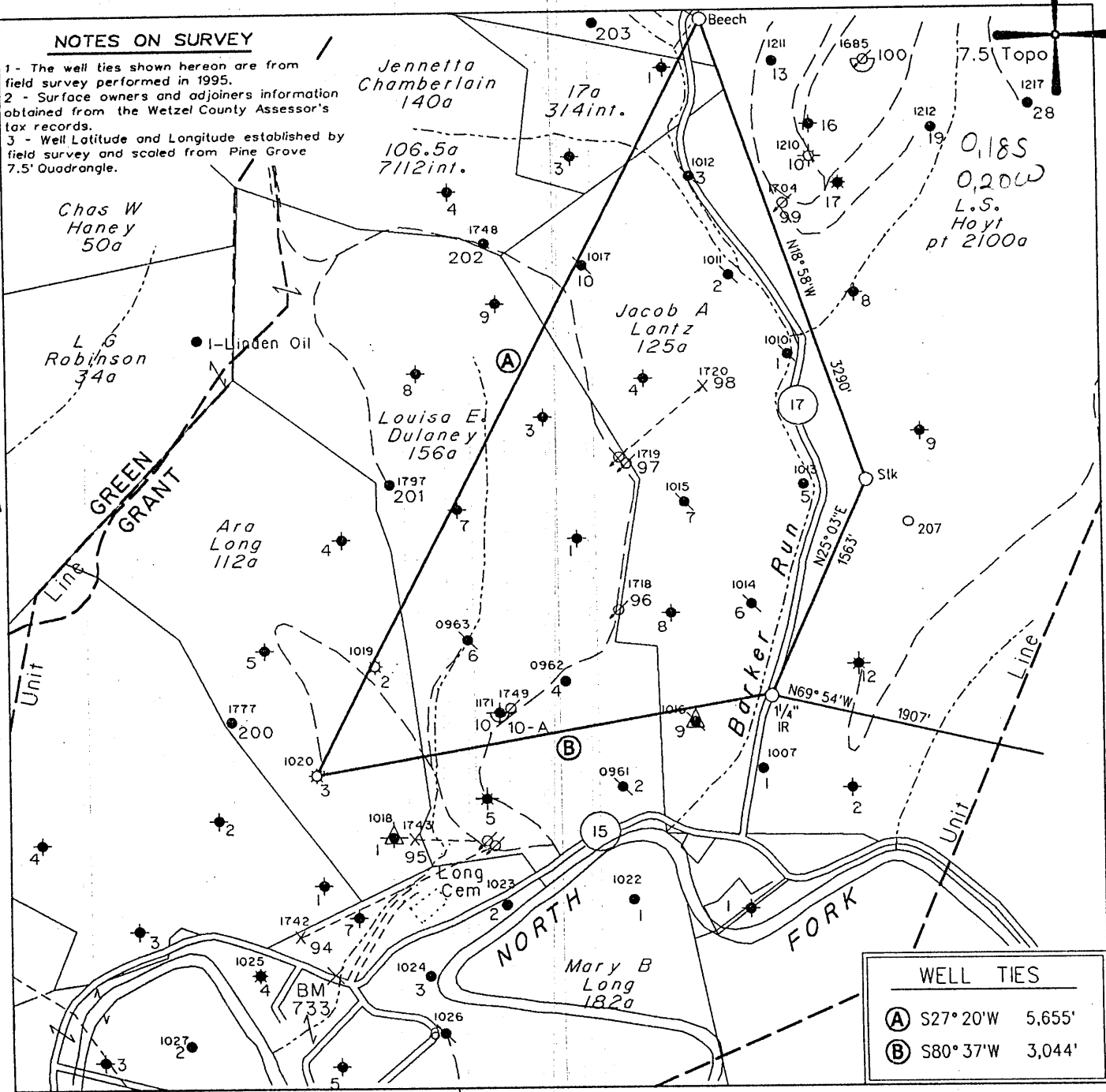


NOTES ON SURVEY

- 1 - The well ties shown hereon are from field survey performed in 1995.
- 2 - Surface owners and adjoiners information obtained from the Wetzel County Assessor's tax records.
- 3 - Well Latitude and Longitude established by field survey and scaled from Pine Grove 7.5' Quadrangle.

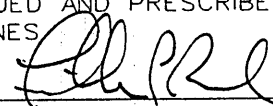


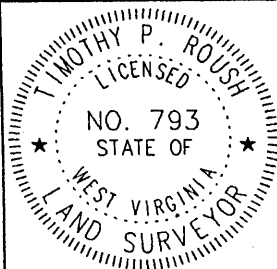
WELL TIES	
(A)	S27° 20' W 5,655'
(B)	S80° 37' W 3,044'

(H) DENOTES LOCATION OF WELL ON UNITED STATES TOPOGRAPHIC MAPS

FILE NO. 995
 MAP NO. N68 N 10 S E W 3
 SCALE 1" = 1000'
 MINIMUM DEGREE OF ACCURACY 1 in 200
 PROVEN SOURCE OF ELEVATION USGS BM - 838'

I THE UNDERSIGNED, HEREBY CERTIFY THAT THIS PLAT IS CORRECT TO THE BEST OF MY KNOWLEDGE AND BELIEF AND SHOWS ALL THE INFORMATION REQUIRED BY LAW AND THE REGULATIONS ISSUED AND PRESCRIBED BY THE DEPARTMENT OF MINES

(SIGNED) 
 TIMOTHY P. ROUSH PS 793



WEST VIRGINIA

Division of Environmental Protection
 Office of Oil and Gas
 1356 Hansford St.
 Charleston, West Virginia 25301



DATE September 5, 2002

FARM Ara Long

Ara Long #3

API WELL NO.

47-103-1019-P

1020

WELL TYPE: OIL GAS LIQUID INJECTION WASTE DISPOSAL
 (IF "GAS") PRODUCTION STORAGE DEEP SHALLOW
 LOCATION: ELEVATION 1,087' WATERSHED North Fork of Fishing Creek
 DISTRICT Grant COUNTY Wetzel
 QUADRANGLE Pine Grove

SURFACE OWNER Paul Able ACREAGE 100.3 Ac.

OIL & GAS ROYALTY OWNER Robert B. Myers et al. LEASE ACREAGE 112 Ac.

LEASE NO. 25941-50

PROPOSED WORK: DRILL CONVERT DRILL DEEPER REDRILL FRACTURE OR STIMULATE PLUG OFF OLD FORMATION PERFORATE NEW FORMATION OTHER PHYSICAL CHANGE IN WELL (SPECIFY) _____

PLUG AND ABANDON CLEAN OUT AND REPLUG

TARGET FORMATION Gordon ESTIMATED DEPTH 2,943'

WELL OPERATOR East Resources, Inc.
 ADDRESS P. O. Box 5519
Vienna, W.Va. 26105

DESIGNATED AGENT Michael McCown
 ADDRESS P. O. Box 5519
Vienna, W.Va. 26105

SEP 29 2002