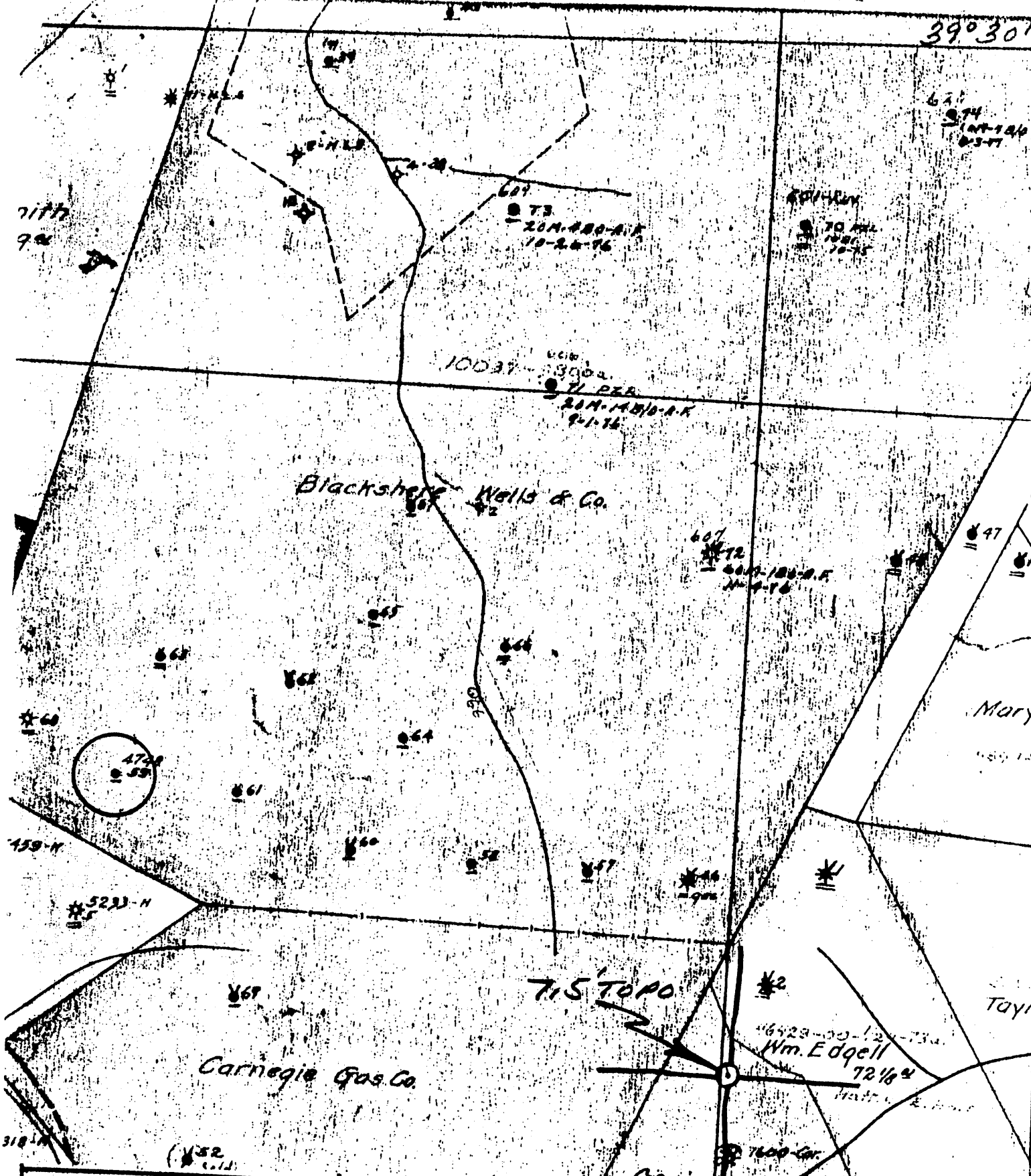


39° 30'



(+) DENOTES LOCATION OF WELL ON UNITED STATES TOPOGRAPHIC MAPS
 FORM IV-6
 (8-78)
 N 49 N1 E4



DATE 1-26-, 19 79
 OPERATOR'S WELL NO. 59
 API WELL NO. 47-103-0943
 STATE WV COUNTY WETZEL PERMIT

STATE OF WEST VIRGINIA
 DEPARTMENT OF MINES
 OIL AND GAS DIVISION

WELL TYPE: OIL GAS LIQUID INJECTION WASTE DISPOSAL
 ('IF GAS', PRODUCTION STORAGE DEEP SHALLOW
 LOCATION: ELEVATION _____ WATER SHED ARCHES FORK
 DISTRICT GRANT COUNTY WETZEL
 QUADRANGLE FOLSOM 7157
 SURFACE OWNER _____ ACREAGE _____
 OIL & GAS ROYALTY OWNER _____ LEASE NO. _____ LEASE ACREAGE _____
 PROPOSED WORK: DRILL CONVERT DRILL DEEPER REDRILL FRACTURE OR STIMULATE PLUS OFF OLD FORMATION PERFORATE NEW FORMATION OTHER PHYSICAL CHANGE IN WELL (SPECIFY) _____
 PLUG AND ABANDON CLEAN OUT AND REPLUG
 TARGET FORMATION _____ ESTIMATED DEPTH _____
 WELL OPERATOR Pennzoil Company DESIGNATED AGENT James A. Crews
 ADDRESS P. O. Box 1588 Parkersburg, WV 26101 ADDRESS P. O. Box 1588 Parkersburg, WV 26101

BLACKSHERE WELLS - 59

Well No. 4148 (79) Blackhawk Well Co Farm Acres
 Lease No. *Graver* District *Wetzel* County *WV* State
 Contractor *J. F. Mordall* P.A.L. G.A. *AMY* Contractor
 Drilling Commenced *Aug 30* 1917 Drilling Completed *Oct 6* 1917
 N. S. E. W.

ROCK FORMATION	TOP	BOTTOM	STEEL LINE MEASUREMENT	REMARKS
<i>Pittsburg Coal</i>	<i>1044</i>	<i>1104</i>		
<i>Little Mountain</i>	<i>1440</i>	<i>1505</i>		
<i>Big "</i>	<i>1687</i>	<i>1646</i>		
<i>1st Sand</i>	<i>1699</i>	<i>1724</i>		
<i>1st Salt "</i>	<i>1880</i>	<i>1900</i>		
<i>2" " "</i>	<i>1970</i>	<i>2030</i>		
<i>Maxon</i>	<i>shells</i>	<i>2130</i>		
<i>Little Linn</i>	<i>2240</i>	<i>2300</i>		
<i>Quincy Linn</i>	<i>2300</i>	<i>2310</i>		
<i>Big Linn</i>	<i>2310</i>	<i>2430</i>		
<i>Big Linn</i>	<i>2430</i>			
<i>Lead</i>	<i>2490</i>			
<i>Oil</i>	<i>2511</i>			
<i>Total depth</i>		<i>2513</i>	<i>2513</i>	<i>500 ft. in hole</i>

CASING RECORD AS TALLIED. NOT STEEL LINE MEASUREMENT

SIZE	PUT IN WELL		PULLED OUT		LEFT IN WELL		Shot Date	Amount	Sand	Result	Packer Size	Depth Set
	FEET	IN.	FEET	IN.	FEET	IN.						
<i>10</i>	<i>416</i>		<i>416</i>				<i>Nov. 28, 1915</i>	<i>20 yds</i>		<i>Well flowed after shot</i>		
<i>8 1/4</i>	<i>1655</i>	<i>10</i>								<i>Shot Nov. 27 - 30 yds.</i>		
<i>6 7/8</i>	<i>2456</i>											

Production First 24 Hours _____ Bbls. Gas Test _____
 Approved by *J. B. Mordall* Superintendent

103-943